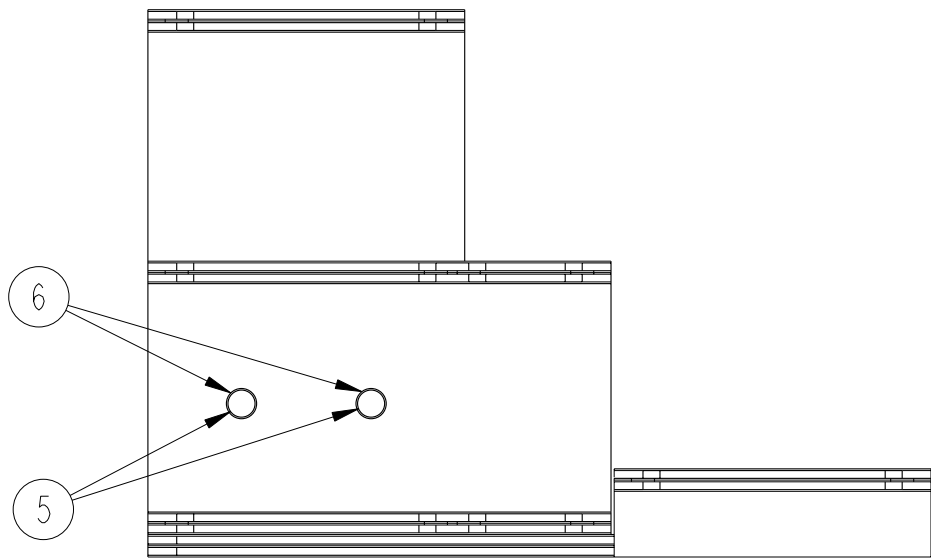
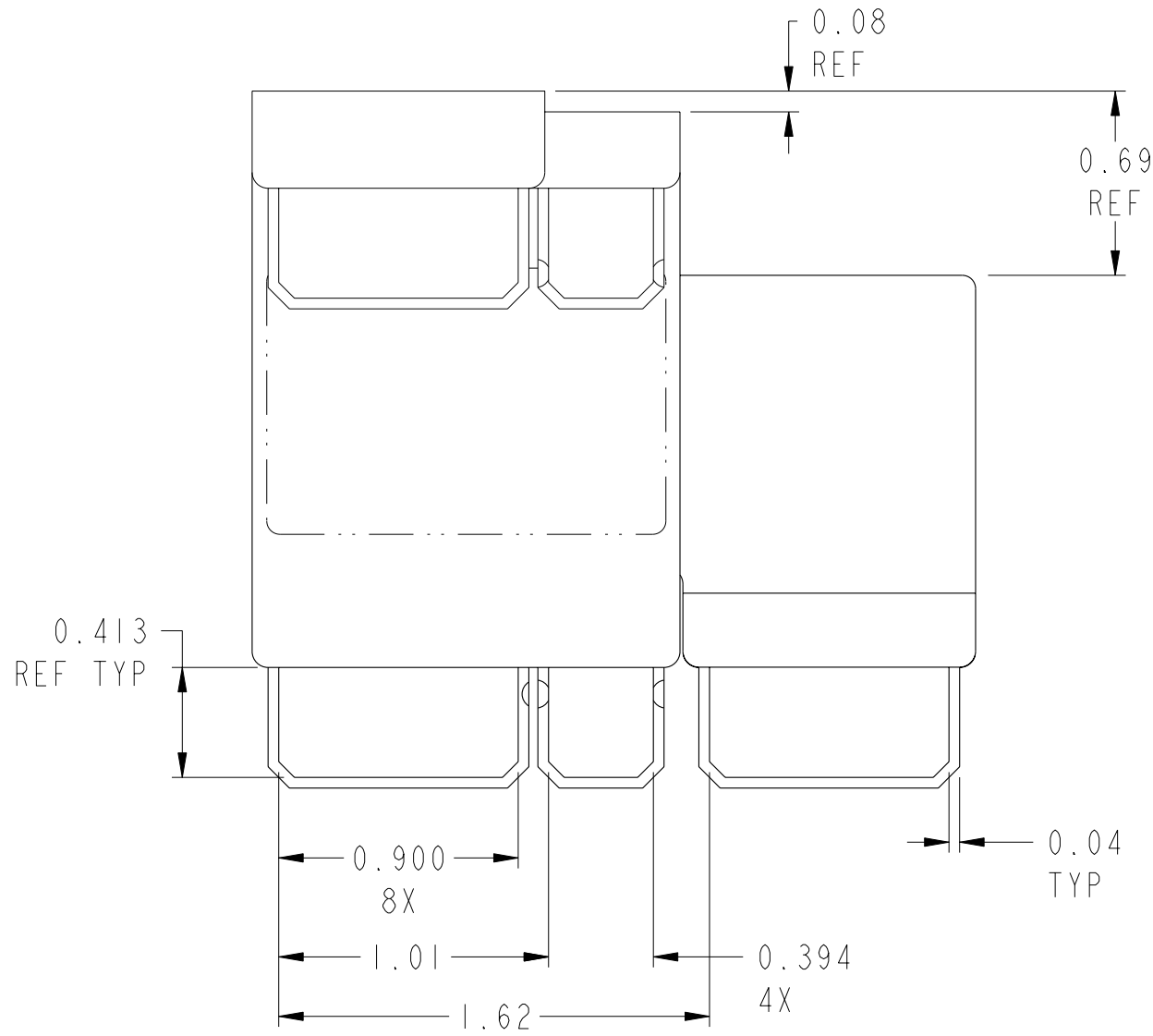


This document is the property of and embodies CONFIDENTIAL and PROPRIETARY information of FCI. No part of the information shown on this document may be used in any way or disclosed to others without the written consent of FCI. Copyright FCI.

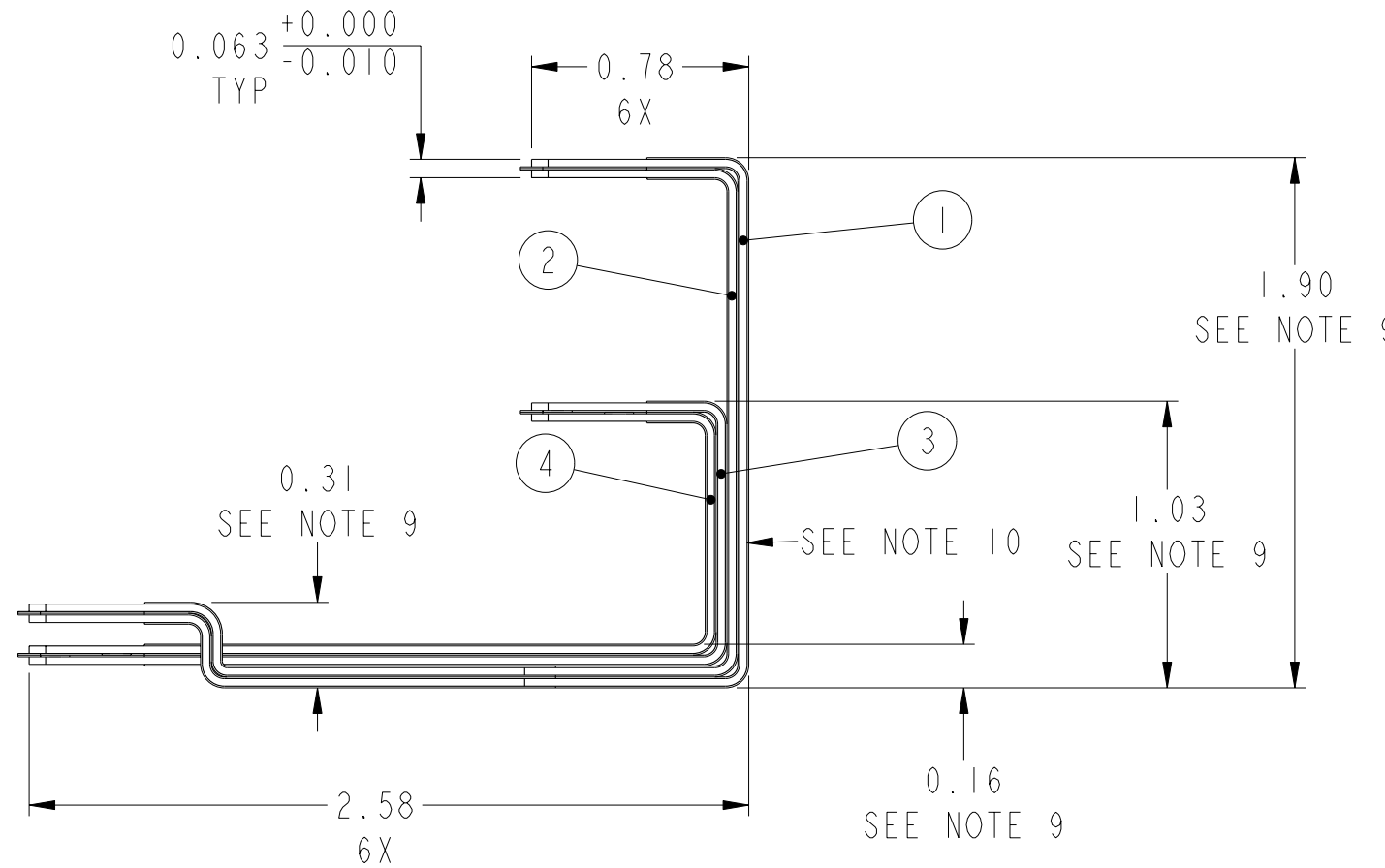
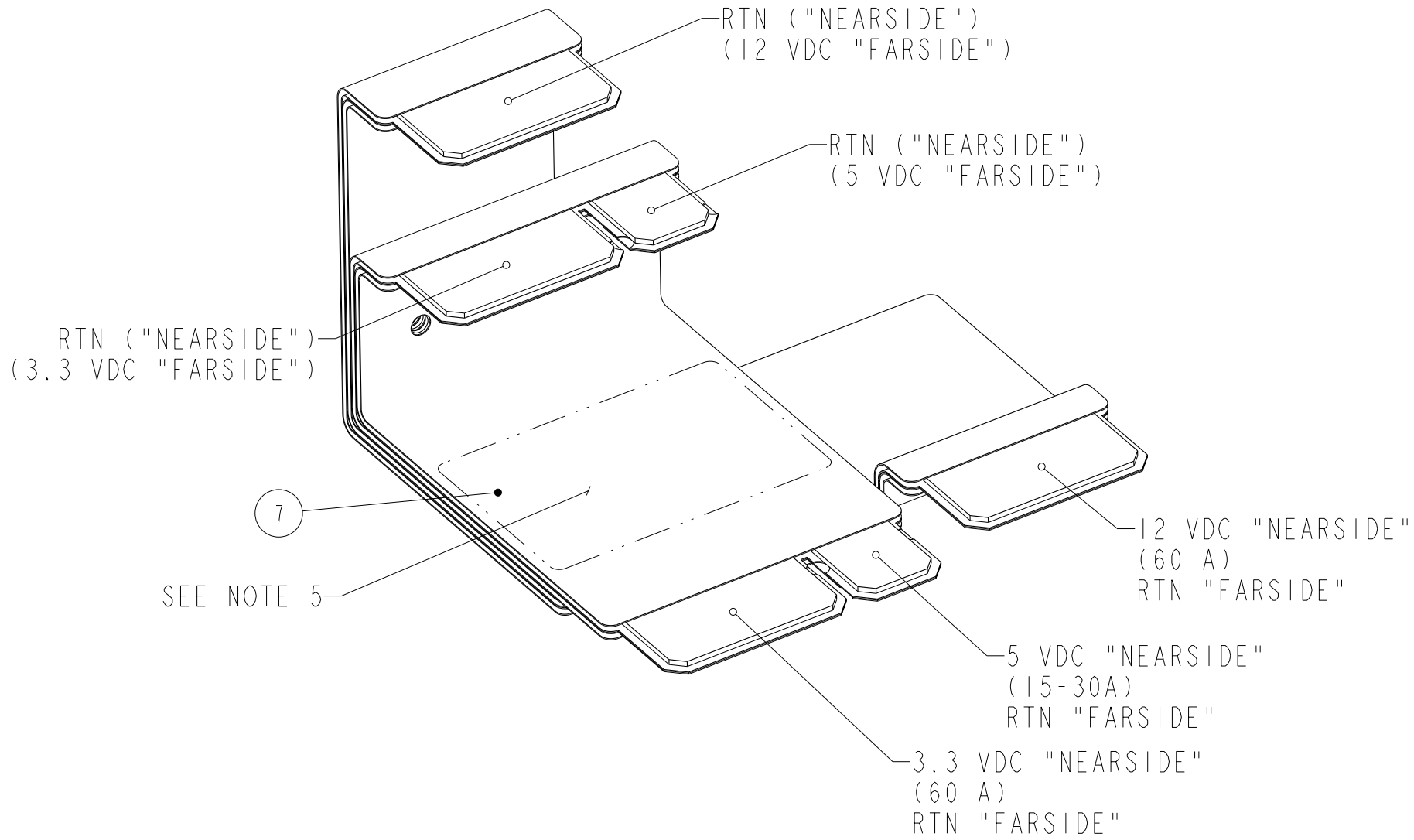
FCI CONFIDENTIAL

PRODUCT NUMBER

10044349-001LF



- NOTES: UNLESS OTHERWISE SPECIFIED
1. NO ADDITIONS, DELETIONS, MODIFICATIONS OR SUBSTITUTIONS WITHOUT PRIOR WRITTEN TEKELEC APPROVAL.
 2. MINIMUM RELIEF AND RADIUS.
 3. CONTACT AREA: 30u" (0.76uM) GOLD PLATING
 4. INSULATION TO BE UL 94V-0.
 5. PERMANENTLY MARK PART NUMBER, LATEST REV, VENDER NAME AND DATE OF MANUFACTURE WITH .09 TO .13 HIGH CHARACTERS PERMANENT INK OR ENGRAVING IS ACCEPTABLE. LOCATE APPROXIMATELY WHERE SHOWN.
 6. THIS IS A REFERENCE DRAWING OF A COMPUTER GENERATED 3D MODEL. ANY CHANGES MUST BE MADE WITHIN THE MODEL FILE. THE 3D MODEL FILE SHALL BE USED FOR MANUFACTURING PURPOSES.
 7. THIS PART HAS BEEN DESIGNED IN ACCORDANCE WITH TEKELEC SPECIFICATIONS 906-0011-01 "SPECIFICATIONS, DESIGN, ELECTROMECHANICAL ASSEMBLIES, NSD.
 8. THIS PART SHALL BE FABRICATED IN ACCORDANCE WITH TEKELEC SPECIFICATION 906-0012-01 "SPECIFICATION, FABRICATION, ELECTRO-MECHANICAL ASSEMBLIES, NSD.
 9. DIMENSIONS ARE TO FILMS AND SHOULD BE MEASURED AS NEAR AS POSSIBLE TO BEND RADIUS
 10. LOAD RIVETS FROM THIS SIDE INCLUDE A WASHER ON BOTH SIDES OF RIVET.
 11. THIS PRODUCT MEETS EUROPEAN UNION DIRECTIVES AND OTHER COUNTRY REGULATIONS AS DESCRIBED IN GS-22-008.



ITEM	QTY	PART NUMBER	DESCRIPTION
1	1	10045654-001	FORMED SUB-ASSY
2	1	10045654-002	FORMED SUB-ASSY
3	1	10045654-003	FORMED SUB-ASSY
4	1	10045654-004	FORMED SUB-ASSY
5	2	10050814-001	BLIND RIVET
6	4	10039424-003	WASHER
7	1	336129-014	LABEL

rev	ecn no	dr	date
A	V06-0642	TAB	2006-06-28
-	-	-	-
-	-	-	-

TOLERANCES UNLESS OTHERWISE SPECIFIED	0.XX	±0.02	0.XXX	±0.010	0.XXXX	±0.0050
LINEAR	-	-	-	-	-	-
ANGULAR	0°	±1°	-	-	-	-

Material	-	Spec ref	-
Mat code	-	surface	✓
Heat treat	-	tolerance	ASME Y14.5
Plating/Finish	SEE NOTE 3	ASME Y14.5	-
Dr	M.CONDE	9/10/04	Product family
Eng	M.CONDE	9/10/04	BUSBAR
Chr	M.CONDE	9/10/04	Model Name
Appr	M.CONDE	9/10/04	10044349
Model Revision	A	REL Level	ECN
FCI	TEKELEC	ASSEMBLY	10044349
Pro/E file	catalog no	-	CUSTOMER
sheet 1 of 1	-	-	-