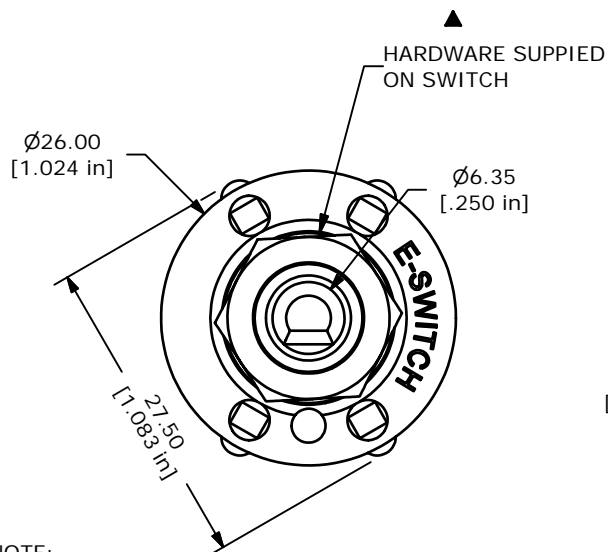
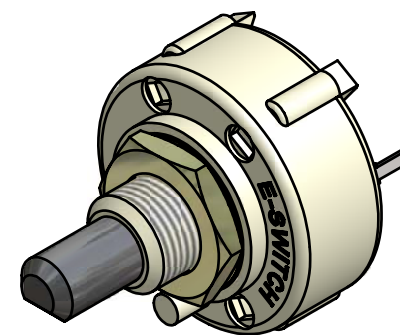
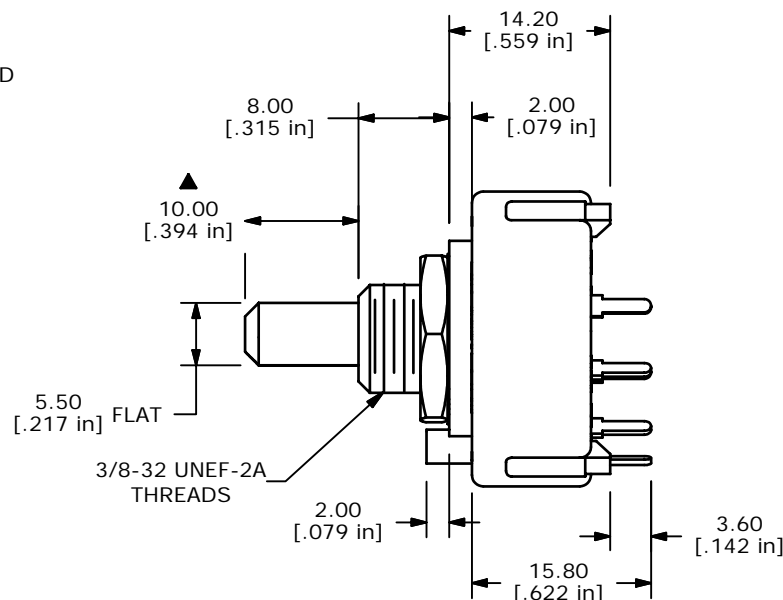


CONTACT CONFIGURATION
TIMING (BBM) NON-SHORTING

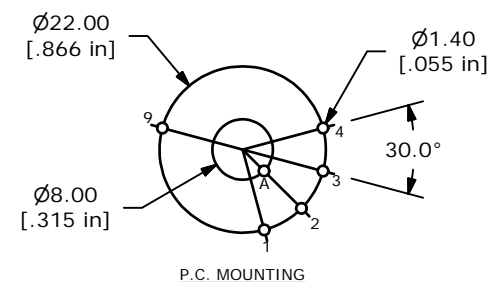
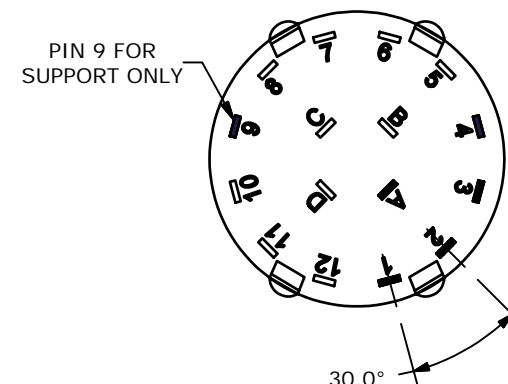


NOTE:

1. ALL DIMENSIONS IN MM[INCH].
2. GENERAL TOLERANCE: X.X=±0.4
X.XX=±0.25
3. TERM. NOS. FOR REFERENCE ONLY.
- ▲ 4. CONTACT MATERIAL: SILVER
5. CONTACT RATING: 150MILLIAMP, 250VAC/DC
350MILLIAMP, 110VAC/DC
6. CONTACT RATING (NON-SWITCHING) 5A
7. OPERATING FORCE 425±100CM/STANDARD
8. OPERATING TEMP: -30°C TO 85°C
- ▲ 9. CIRCUIT SP: 4 POSITION 30° INDEX.
10. DIELECTRIC STRENGTH: 1000V RMS MIN.@ SEA LEVEL.
- ▲ 11. HARDWARE SUPPLIED ON SWITCH:
LOCKWASHER, HEXNUT, STOP RING
12. ▲ DENOTES CRITICAL PARAMETER.
13. 2002/95/EC (ROHS) COMPLIANT



ISOMETERIC



E-SWITCH®

TITLE KC14A10.001NPS

| | | | | |
|-----|--------|-------------------------|---------|----|
| A | 15692 | RELEASED FOR PRODUCTION | 1/20/06 | PH |
| REV | PCR NO | DESCRIPTION | DATE | BY |

THE INFORMATION CONTAINED IN THIS DOCUMENT IS PROPRIETARY
TO E-SWITCH AND IS NOT TO BE COPIED OR TRANSFERRED

| | | | | | | | | | |
|-------|-------|------|-----------|----|----|-----|---------|-----|---|
| SCALE | 1.5:1 | DATE | 1/20/2006 | DR | PH | DWG | G530166 | REV | A |
|-------|-------|------|-----------|----|----|-----|---------|-----|---|