

Sockets, Socket sets, Accessories for manual drives



STAHLWILLE sets of socket spanners and inserts...

The professionals in industry and the trades are under pressure to work quickly, accurately and economically. Which is why they make heavy demands on their tools. Due to the numerous technical innovations incorporated in them, STAHLWILLE ratchets and sockets make a valuable contribution to the prevention of both mistakes and injuries.

By using ratchets, adaptors and inserts made by STAHLWILLE, professional tradesmen are quite simply "making sure". It does not matter whether it is a full set of tools or individual components – users can be sure they will get top-of-the-range quality every time. This is guaranteed by adherence to the closest tolerances during production and stringently applied quality assurance measures in accordance with DIN EN ISO 9001.

The legendary reliability and precision of these tools is enhanced by a large number of user-friendly features.

- Non-slip, ergonomically manufactured 2-component handles facilitate strain-free working.
- Slim-design sockets enable access to awkward places.
- The QuickRelease system ensures full control over the joint between the ratchet, the adaptors and the sockets.
- Sculpted chemical-resistant cut-outs in special PE foam inlays prevent tools rattling and sliding around.

Safety advantage 1

STAHLWILLE QuickRelease system

The problem:

imagine what happens if a tool falls into an inaccessible place during repair or overhaul work.

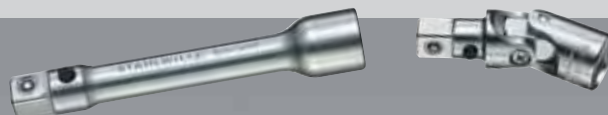
The consequences:

arduous, costly search and recovery, possibly involving disassembly of an aeroengine or machine.

The solution:

the safety lock built into the QuickRelease system prevents damage to workpieces and guarantees secure, rapid connection of all individual components to form a single combined unit. Nothing can get lost because it is not possible to inadvertently release a tool. To release a tool, it is first necessary to press the release button deliberately.

Even if you have oily or greasy hands, attaching and separating the individual components is so simple it noticeably smoothes your workflows.



Safety advantage 2

STAHLWILLE AS-Drive

The problem:

removing heavily corroded screws requires the application of considerable force. The socket slips off the head of the screw.

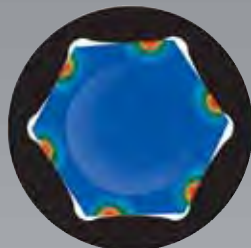
The consequences:

uncontrolled movements cause injuries and damage to both the workpiece and the tools.

The solution:

STAHLWILLE sockets are equipped with the AS-Drive* profile. This permits high transmission of forces to the lands of nuts and bolts without damaging them. The risk of injury is minimised and the corners of the screw heads and nuts are no longer damaged.

*AS-Drive = Anti-Slip-Drive



The tolerances on the jaw sizes and square drives of these cold-extruded sockets are as close as if they had been broached. This prevents them slipping off the heads. The consequences: minimum wear on both screws and tools.



provide guaranteed safety and efficiency.

Set No 45/14/5iQR
in sturdy plastic case



- ① Ergonomically designed 2-component handle made of impact-resistant, skydrol resistant plastic.
- ② All metal parts are made of high-grade steel (Chrome Alloy Steel, chrome plated).
- ③ Firm seating and yet easy release of sockets and adaptors.
- ④ Wear parts can be easily replaced using sets of spares for sockets.
- ⑤ Separate pawl to switch from clockwise to anti-clockwise.



Safety advantage 3 

STAHLWILLE HPQ® inserts

The problem:

although there is hardly enough room to move, you still have to apply considerable torque to loosen a stubborn screw.

The consequences:

many of the sockets available are useless simply because their wall thickness makes them impracticable in awkward places.

The solution:

STAHLWILLE HPQ®* sockets are manufactured from selected tough steel alloys. These sockets will not slip off the head of the screw, nor will they stretch when subjected to heavy loads. Their extremely thin walls and unbelievably high load capacity are simply exemplary. HPQ® sockets are free of cadmium and are therefore suitable for use on titanium alloy parts and titanium fasteners as used e.g. in the aerospace industry, where safety is a crucial factor. They meet these aerospace standards: E DIN EN 3709, E DIN EN 3710, SAE AS 954-E, S.B.A.C. AS 40605/40606, MS-33787, MIL-W-8982.

* = High Performance Quality

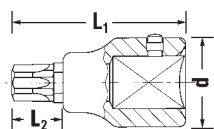


Some sets of STAHLWILLE socket spanners are supplied in sturdy plastic cases.

59TX

Screwdriver sockets

for inside TORX® screws, Chrome Alloy Steel, chrome plated.



Code	size	mm	L ₁ mm	L ₂ mm	d mm	ΔΔ g	
05 100060	T60	13.2	80	25	34.7	265	1
05 100070	T70	15.5	80	25	34.7	285	1
05 100080	T80	17.6	80	25	34.7	300	1
05 100090	T90	19.9	80	25	34.7	331	1
05 100100	T100	22.1	80	25	40	474	1

Application: size T80 for MAN series M,
size T100 for MAN series F

556

Sliding head

without Bar handle No 558.



Code	L mm	d mm	ΔΔ g	
15070000	61.5	40	318	5

558

Bar handle

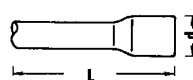


Code	L mm	d mm	ΔΔ g	
15 170000	510	20	1299	2

559

Extensions

DIN 3123/ISO 3316.



Code	size	L mm	d mm	ΔΔ g	
15010003	4	95	35	369	5
15010001	8	200	35	696	5
15010002	16	400	35	1389	5

561

Universal joint

DIN 3123/ISO 3316.



Code	L mm	d mm	ΔΔ g	
15020000	109	40	566	1

568

Adaptor



3/4" socket x 1/2" plug (20 x 12.5),
maximum torque 512 N m,
DIN 3123/ISO 3316,
HPQ® high performance steel.



Code	L mm	d mm	ΔΔ g	
15030003	55	34.7	203	5

569

Adaptor



3/4" inside x 1" plug (20 x 25),
DIN 3123/ISO 3316,
HPQ® high performance steel.

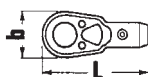


Code	L mm	d mm	ΔΔ g	
15030006	61	34.7	295	5

3

Drive tools and accessories

3/4" □, finish: Chrome Alloy Steel, chrome plated.



552

Ratchet



reversible, 36 teeth,
with QuickRelease safety lock,
without Bar handle No 558.



Code	L mm	b mm	a mm	ΔΔ g	
15110000	165	70	55	1684	1

5520

Spare parts set for ratchet No 552

Content:
1 pinion, 1 pawl, 1 lever, 1 ball, 1 compression spring, 2 screws

Code	ΔΔ g	
19050000	507	1

563

Ratchet adaptor

reversible, 44 teeth.



Code	L mm	∅ mm	ΔΔ g	
15 140000	105.5	63	1257	1

554

Flexible head



with QuickRelease safety lock,
without Bar handle No 558.



Code	L mm	d mm	ΔΔ g	
15060000	132	40	795	5