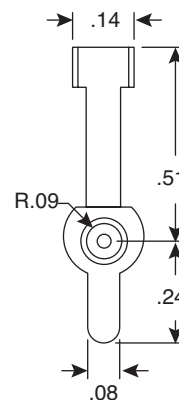
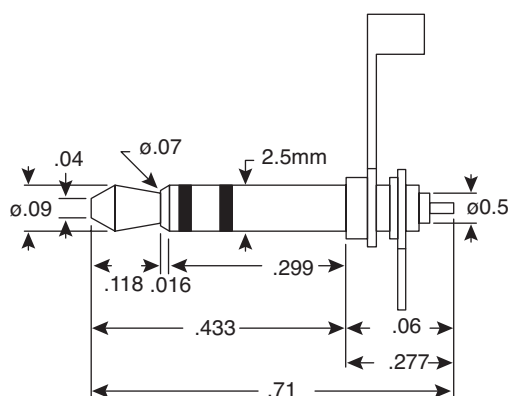
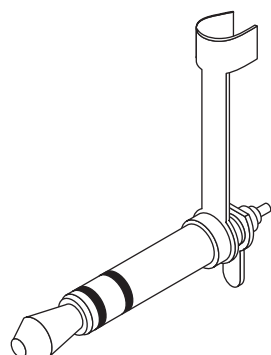


Plug

171-3205, 171-3206

KOBI CONN

Plug



Dimensions: In.
Except where noted.

SPECIFICATIONS	
Type:	Custom molding applications, straight or right angle, 171-3205 (stereo), 171-3206 (mono)
Insulator:	Duracon
Contacts:	Nickel plated brass
Dielectric Strength:	500VAC for 1 minute
Insulation Resistance:	≥100MΩ @ 500VDC
Contact Resistance:	50mΩ max.
Temperature Rating:	110°C
Size:	2.5mm

Application Note:

Electrical conductivity of this plug could be effected if the molding process is not precisely controlled and engineered correctly. Factors such as temperature, pressure, and material used in the molding process can have an effect on the item being molded. Mouser has no control over these factors or the molding process and does not know enough about the various molding processes to recommend one for use. The user must determine the suitability of this product for his/her molding process.

Date Last Revised: 6/21/12

Available from Mouser Electronics
1-800-346-6873
www.mouser.com

KC-300054

Specifications are subject to change without notice. No liability or warranty implied by this information. Environmental compliance based on producer documentation.

171-3205, 171-3206

Mouser Electronics

Authorized Distributor

Click to View Pricing, Inventory, Delivery & Lifecycle Information:

Kobiconn:

[171-3205](#) [171-3206](#)