

1

2

3

4

PRODUCT NUMBER

10072354-X01-XXXLF

PLATING
S = 0.38µm GOLD/GXT DN CONTACT AREA
2µm MIN MATTE TIN DN TAIL

ROHS COMPATIBLE
NOTE 6

G = 0.76µm GOLD/GXT DN CONTACT AREA
2µm MIN MATTE TIN DN TAIL

PACKAGING
NOTE 5

TOTAL NB OF POSITIONS
04 TO 50 PDS

F = GOLD FASH DN CONTACT AREA
2µm MIN MATTE TIN DN TAIL

COLOR OPTION NOTE 1

1.27µm MIN NICKEL UNDERPLATING

NOTES:

1. MATERIAL HOUSING: HIGH TEMP. THERMOPLASTIC UL-94V0
MEETS GWT 850°C 960°C

- = STANDARD COLOR CREAM
B = OPTIONAL COLOR BLACK

2. MATERIAL TERMINAL: COPPER ALLOY

3. TO DETERMINE DIMENSIONS:

N = NUMBER OF POSITIONS PER ROW.

4. 7N MIN PIN RETENTION IN EITHER DIRECTION.

5. PACKAGING :

= PLASTIC BOX

U = TUBE AVAILABLE FROM 06 TO 50 PDS

K = TAPE & REEL WITHOUT PICK UP CAP

6. ROHS COMPATIBLE PRODUCT SPECIFICATIONS

a - PLATING

= "LF" MEANS THE PRODUCT IS LEAD-FREE
2µm MINIMUM MATTE TIN OVER 1.27µm MINIMUM NICKEL UNDERPLATE.

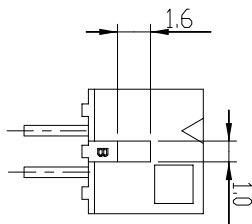
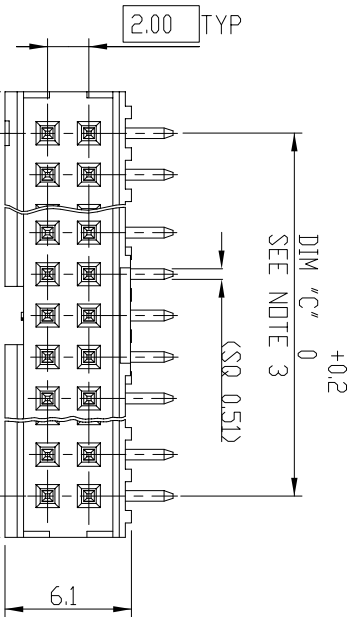
b - MANUFACTURING PROCESS COMPATIBILITY

- THE HOUSING WITHSTAND EXPOSURE TO
260°C PEAK TEMPERATURE FOR
30 SECONDS MAX IN A CONVECTION, INRA-RED
OR VAPOR PHASE OR REFLOW OVEN.

c - LABELLING:

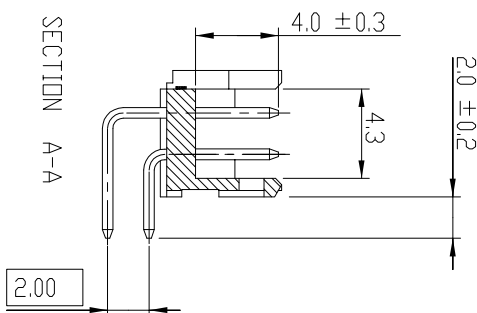
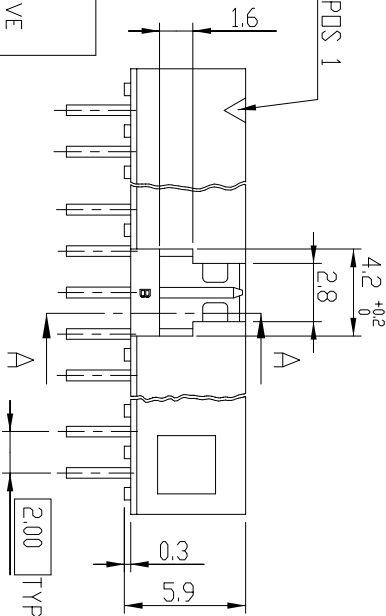
- MEETS PACKAGING SPECS AS PER GS-14-920.

d - THIS PRODUCT MEETS EUROPEAN DIRECTIVES
AND OTHER COUNTRY REGULATIONS AS DESCRIBED
IN GS-47-0004

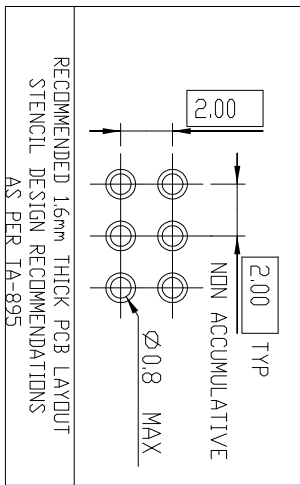


4 POSITIONS PRODUCT DESIGN

SEE NOTE 3
SEE NOTE 3
SEE NOTE 3



SECTION A-A



rev	ecn no	dr	date
H	B-19190	LMU	141024
C	F08-0145	EJA	150408
D	F10-0013	GPE	230210
E	F11-0303	LMU	120911
F	F11-0324	LMU	241011
G	B-17745	JCD	210514

www.fciconnect.com				surface - tolerance std		protection		mm	
Dr L MULIN				ISO 1302		ISO 406		ISO 1101	
Eng J COMAGNON				TOLERANCES UNLESS OTHERWISE SPECIFIED		ANGULAR		LINEAR	
Chr -				0° ±2°		0.0X		±0.05	
Appr JMC				060914		Product family		size	
SHR HEADER				060914		Minitek		A3	
200 RIGHT ANGLE PIP				Product family		Minitek		Spec ref	
catalog no				- CUSTOMER Drawing		10072354		Scale	
- CUSTOMER Drawing				sheet 1 of 1		Rev.		H	



Copyright FCI.