

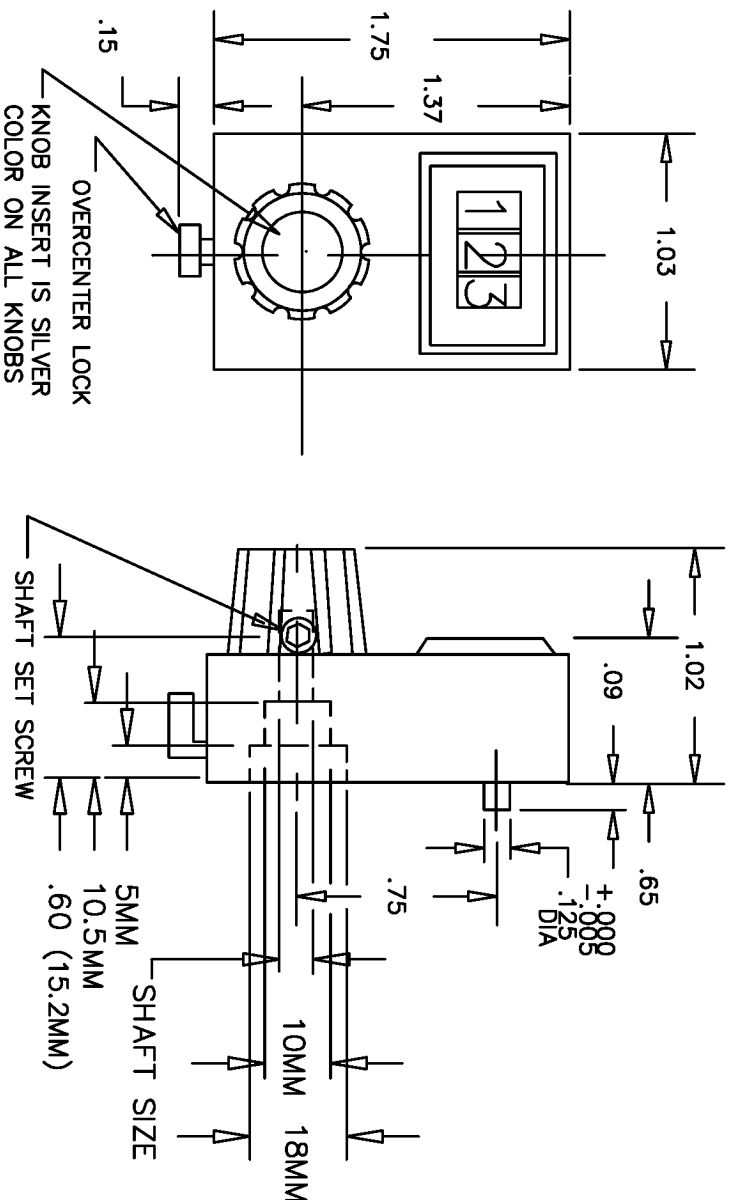
THIS DOCUMENT CONTAINS PROPRIETARY DATA OF POLARIS INDUSTRIAL ENTERPRISES, INC. NO DISCLOSURE, REPRODUCTION, OR USE OF ANY PART THERE OF MAY BE MADE EXCEPT BY WRITTEN PERMISSION.

REV.	BY	DATE	P/N	DB10-1
E	AT	8/13/04	ADDED IVORY AND 6 mm SHAFT SIZE	

000 TO 999, AS KNOB
IS ROTATED CLOCKWISE
WEIGHT.....1.5 APPROX.

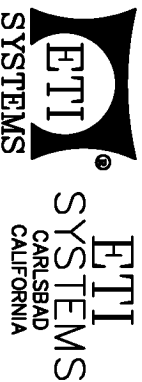
MOUNTING PROCEDURE

- # MTG. HOLE PATTERN



PAGE 1

SCALE NONE	DATE:	1-23-86
	BY	BT
	APPR'D	
CODE	IDENT:	19477



TITLE DIGITAL TURNS COUNTING DIAL

PART NO.
DB10-1

THIS DOCUMENT CONTAINS PROPRIETARY DATA
OF POLARIS INDUSTRIAL ENTERPRISES, INC. NO
DISCLOSURE, REPRODUCTION, OR USE OF ANY
PART THERE OF MAY BE MADE EXCEPT BY
WRITTEN PERMISSION.

REV.	BY	DATE	P/N
E	AT	8/13/04	DB10-2

ADDED IVORY AND 6 mm SHAFT SIZE

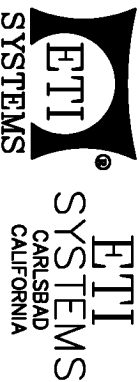
PART NO.	SHAFT SIZE	COLOR	LOCK	NUMBER COLOR	FLEXIBLE COUPLING
DB10SN-3/16	3/16	SILVER	NO		
DB10SL-3/16	3/16	SILVER	YES		
DB10SN-1/8	1/8	SILVER	NO		
DB10SL-1/8	1/8	SILVER	YES	BLACK WITH WHITE BACKGROUND	NO
DB10SN-1/4	1/4	SILVER	NO		
DB10SL-1/4	1/4	SILVER	YES		
DB10SN-6	6mm	SILVER	NO		
DB10SL-6	6mm	SILVER	YES		
DB10BN-3/16	3/16	BLACK	NO		
DB10BL-3/16	3/16	BLACK	YES		
DB10BN-1/8	1/8	BLACK	NO		
DB10BL-1/8	1/8	BLACK	YES		
DB10BN-1/4	1/4	BLACK	NO	WHITE WITH BLACK BACKGROUND	NO
DB10BL-1/4	1/4	BLACK	YES		
DB10BN-6	6mm	BLACK	NO		
DB10BL-6	6mm	BLACK	YES		
DB10GN-3/16	3/16	GRAY	NO		
DB10GL-3/16	3/16	GRAY	YES		
DB10GN-1/8	1/8	GRAY	NO		
DB10GL-1/8	1/8	GRAY	YES	BLACK WITH WHITE BACKGROUND	NO
DB10GN-1/4	1/4	GRAY	NO		
DB10GL-1/4	1/4	GRAY	YES		
DB10GN-6	6MM	GRAY	NO		
DB10GL-6	6MM	GRAY	YES		
DB10IN-3/16	3/16	IVORY	NO		
DB10IL-3/16	3/16	IVORY	YES		
DB10IN-1/8	1/8	IVORY	NO		
DB10IL-1/8	1/8	IVORY	YES	BLACK WITH WHITE BACKGROUND	NO
DB10IN-1/4	1/4	IVORY	NO		
DB10IL-1/4	1/4	IVORY	YES		
DB10IN-6	6MM	IVORY	NO		
DB10IL-6	6MM	IVORY	YES		

PAGE 2

TOLERANCES

XX = +/- .010" FRACT. = +/- 1/64"
XXX = +/- .005" ANGLES = +/- 1/2"
ALL SPECIFICATIONS SUBJECT TO CHANGE WITHOUT NOTICE.

SCALE	DATE: 1-23-86
NONE	BY BT
APPR'VD	
CODE IDENT: 19477	



TITLE
DIGITAL TURNS
COUNTING DIAL

PART NO.

DB10-2

Mouser Electronics

Authorized Distributor

Click to View Pricing, Inventory, Delivery & Lifecycle Information:

[ETI Systems:](#)

[DB10SL-1/4](#)