
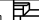
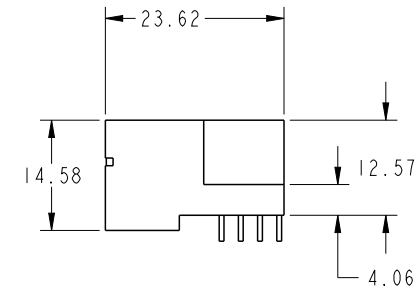
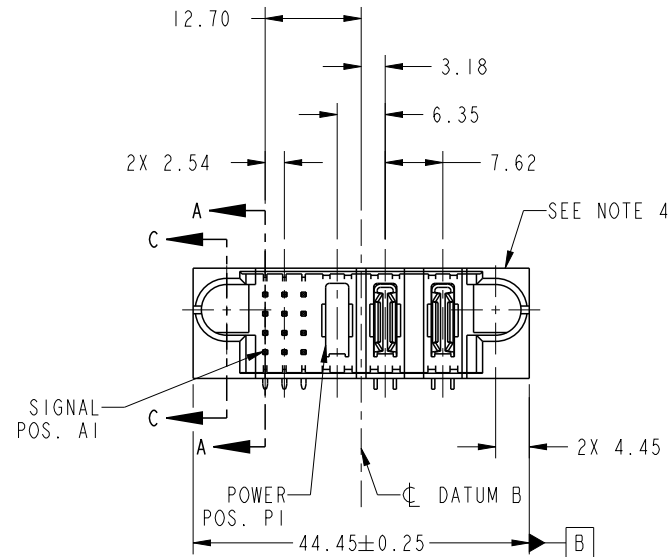




Copyright FCI.

PRODUCT NO.	ROWS	SIGNAL POWER							E2	
		E1	1	2	3	P1	P2	P3		
51939-655-- NOTE 3	D C B A		UUU	TTT	SSS	RRR	X	PA	PA	
			UUU	TTT	SSS	RRR		UU	UU	



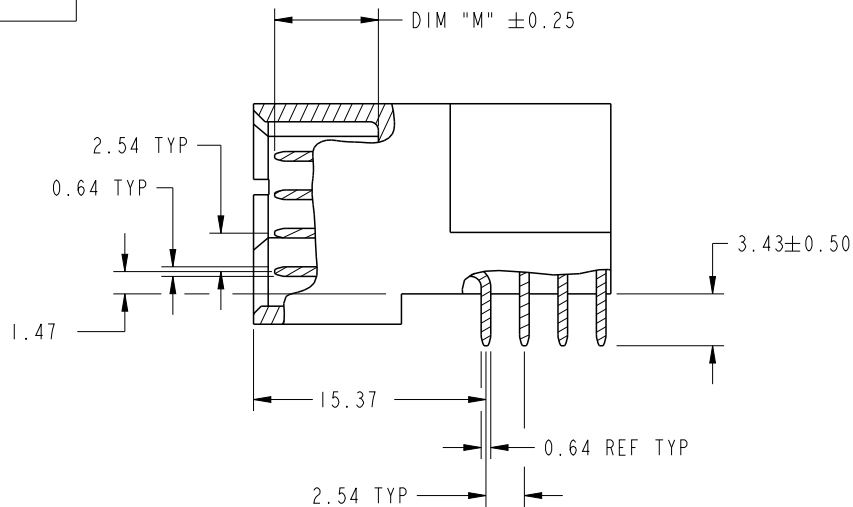
CODE	DIM "M" MATING LENGTH	CONTACT TYPE
U	[6.86]	SIGNAL
T	[6.86]	SIGNAL
S	[6.86]	SIGNAL
R	[6.86]	SIGNAL
PA	[N/A]	POWER
X	N/A	N/A

spec ref	*			dr	Shi Guang	2012/03/16	<div>projection</div> <div></div>	<div>MM</div> <div></div>	size	A4	scale	1:1
tolerance std SEE NOTE	TOLERANCES UNLESS OTHERWISE SPECIFIED			eng	Luo Weller	2013/03/04			ecn no	-		
				chr	-	-						
				appr	Pei-Ming Zheng	2013/03/04			product family		PwrBlade	rel level
surface <div>✓</div>	linear	0.X	±0.5		title 12S + 2P + 1ACP RIGHT ANGLE SOLDER HEADER			dwg no	51939-655		rev A	
		0.XX	±0.25									
		0.XXX	±0.1									
	angular	0°	±2°	www.fci.com	cat. no.		-	Product - Customer Drw		sheet 1 of 4		

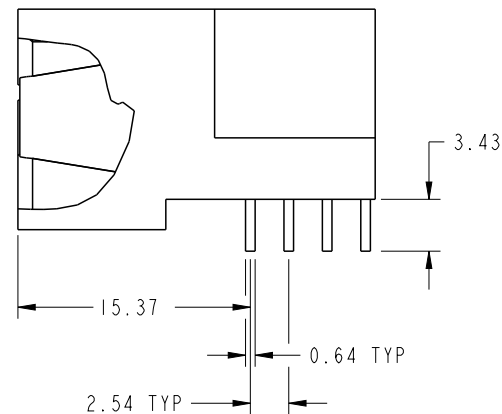
PrintE File - REV C - 2009-06-09

PRODUCT NUMBER

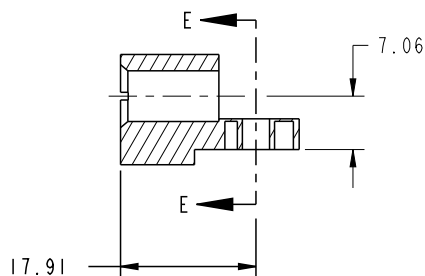
51939-655--
NOTE: 3



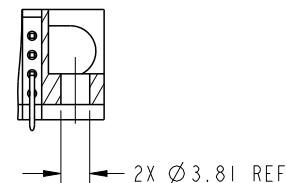
BROKEN-OUT SECTION A-A
SCALE 2:1



SECTION B-B
SCALE 2:1

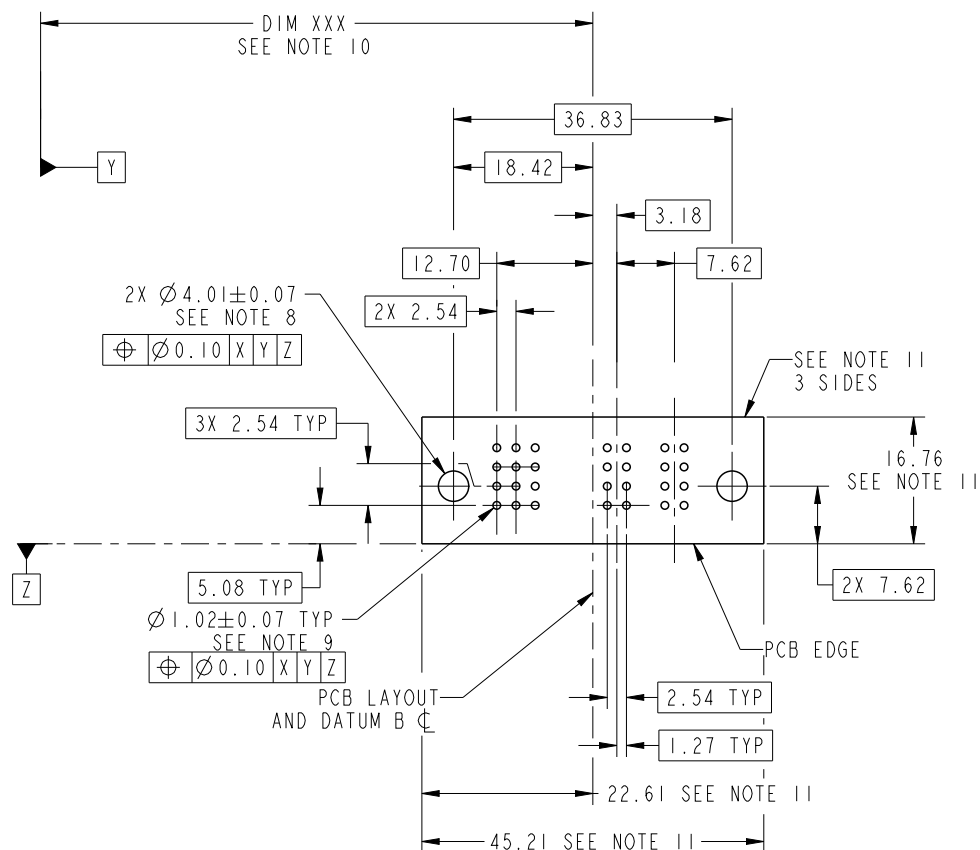


SECTION C-C

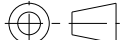
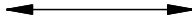



PARTIAL SECTION E-E

dr	Shi Guang	2012/03/16	projection	MM	size	A4	scale	1:1
eng	Luo Weller	2013/03/04			ecn no	-		
chr	-	-			rel level	Released		
appr	Pei-Ming Zheng	2013/03/04	product family	PwrBlade				
	title	12S + 2P + 1ACP RIGHT ANGLE SOLDER HEADER			dwg no	51939-655		rev
www.fci.com	cat. no.	-	Product - Customer Drw				sheet 2 of 4	



RECOMMENDED PCB LAYOUT

dr	Shi Guang	2012/03/16	<div>projection</div> <div></div>	<div>MM</div> <div></div>	size	A4	scale	1:1	
eng	Luo Weller	2013/03/04			ecn no				-
chr	-	-							
appr	Pei-Ming Zheng	2013/03/04	product family		PwrBlade		rel level		Released
	title I2S + 2P + IACP RIGHT ANGLE SOLDER HEADER				dwg no 51939-655			rev A	
www.fci.com	cat. no.		-		Product - Customer Drw			sheet 3 of 4	



Copyright FCI.

PRODUCT NUMBER
51939-655-- NOTE: 3

NOTES:

1. DIMENSIONS AND TOLERANCES ARE IN ACCORDANCE WITH
ASME Y14.5M, 1994 UNLESS OTHERWISE SPECIFIED.

CONNECTOR NOTES:

- 2. HOUSING MATERIAL: UL 94 V-0 GLASS FILLED HIGH-TEMP THERMOPLASTIC
POWER CONTACT MATERIAL: COPPER ALLOY
SIGNAL PIN MATERIAL: COPPER ALLOY
 - 3. SEE ITEM 1 & 2 IN PRINT 10064183 FOR PLATING SPEC OF 51939-655 AND 51939-655LF RESPECTIVELY.
 - 4. MANUFACTURER'S NAME, DATE CODE AND OPTIONAL P/N TO APPEAR ON
THIS SURFACE. THE P/N CAN BE OMITTED IF THERE IS NOT ENOUGH
SPACE ON THIS SURFACE.
 - 5. PRODUCT SPECIFICATION GS-12-149.
APPLICATION SPECIFICATION BUS-20-067.
 - 6. PACKAGED IN TRAYS.
- PCB NOTES:
- 7. ALL HOLE DIAMETERS ARE FINISHED HOLE SIZE.
 - 8. MOUNTING HOLES, WHERE APPLICABLE, ARE UNPLATED.
 - 9. $\varnothing 1.151 \pm 0.025$ DRILLED HOLES PLATED WITH
0.008 MIN SnPb OR Sn OVER 0.03
TO 0.08 Cu PLATING TO ACHIEVE
 $\varnothing 1.02 \pm 0.07$ HOLE.
 - 10. "DIM XXX" TO BE DETERMINED BY THE CUSTOMER.
 - 11. CONNECTOR KEEP-OUT ZONE.

dr	Shi Guang	2012/03/16	<div>projection</div> <div></div>	<div>MM</div> <div></div>	size	A4	scale	1:1				
eng	Luo Weller	2013/03/04			ecn no				-			
chr	-	-										
appr	Pei-Ming Zheng	2013/03/04	product family		PwrBlade		rel level		Released			
<div></div>			title			12S + 2P + 1ACP			dwg no	51939-655	rev	A
						RIGHT ANGLE SOLDER HEADER						
www.fci.com			cat. no.		-		Product - Customer Drw			sheet 4 of 4		

Mouser Electronics

Authorized Distributor

Click to View Pricing, Inventory, Delivery & Lifecycle Information:

[FCI / Amphenol:](#)

[51939-655LF](#)