

EXPRESS COUPLING

Brass

Ref. : DS 2280

Rev. :

Date : 08/05



Valves and fittings

90 Rue du ruisseau 38297 ST QUENTIN FALLAVIER

Tel : (33)04.74.94.15.90 Fax : (33)04.74.95.62.08

E mail : sferaco@sferaco.fr

SPECIFICATIONS :

- . Between claws 41mm
- . NFE 29573 standards

USE :

- . Water and compressed air
- . Max temperature Ts : 60°C
- . Max pressure Ps : 10 bars

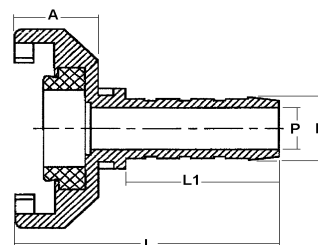
MATERIALS :

DESIGNATION	MATERIALS
Body	Brass
Gasket	NBR

SIZE :

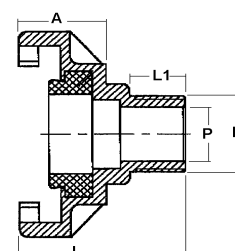
. Hose coupler Ref. 2280 (with mounted gasket) - Ref. 2285 (without gasket)

	D	7	9	11	13	16	19	22	25
Ref.	L	69	69,0	69	69	69	69	69	69
2280	L1	40	40	40	40	40	40	40	40
2285	A	22	22	22	22	22	22	22	22
	P	4	6	8	10	12	15	18	21



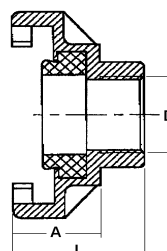
. Male coupler Ref. 2281 (with mounted gasket) - Ref. 2286 (without gasket)

	D	1/4"	3/8"	1/2"	3/4"	1"	1" 1/4
Ref.	L	38	39	42	42	42	47
2281	L1	10,5	11	14	14	14	17
2286	A	22	22	22	22	22	22
	P	8	10	15	20	25	32



. Female coupler Ref. 2282 (with mounted gasket) - Ref. 2287 (without gasket)

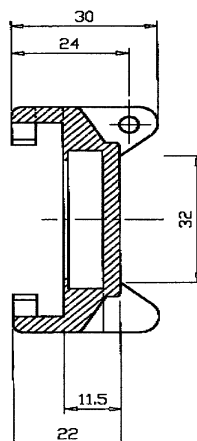
	D	1/4"	3/8"	1/2"	3/4"	1"	1" 1/4
Ref.	L	33	33	33	36	37	42
2282	A	22	22	22	22	22	22
2287							



. Cap coupler

Ref. 2283 (with mounted gasket)

Ref. 2288 (without gasket)



ADVICE : Our opinion and our advice are not guaranteed and SFERACO shall not be liable for the consequences of damages. The customer must check the right choice of the products with the real service conditions.