**Ordering number C12607_VIRPI-S**

Family	Virpi	FWHM	13 degrees
Type	Lens	Efficiency	(simulated) 0 %
LED	XB-D	cd/Im	9.230
Color	Clear	Gerber File	Available
Diameter	74.9 x 74.9 mm		
Height	9.4 mm		
Style	Square		
Optic Material	PMMA		
Holder Material	-		
Fastening	Pin, glue		
Status	Ready		

**Ordering number C12608_VIRPI-M**

Family	Virpi	FWHM	28 degrees
Type	Lens	Efficiency	(simulated) 0 %
LED	XB-D	cd/Im	2.830
Color	Clear	Gerber File	Available
Diameter	74.9 x 74.9 mm		
Height	9.4 mm		
Style	Square		
Optic Material	PMMA		
Holder Material	-		
Fastening	Pin, glue		
Status	Ready		

**Ordering number C12609_VIRPI-W**

Family	Virpi	FWHM	40 degrees
Type	Lens	Efficiency	(simulated) 0 %
LED	XB-D	cd/Im	1.740
Color	Clear	Gerber File	Available
Diameter	74.9 x 74.9 mm		
Height	9.4 mm		
Style	Square		
Optic Material	PMMA		
Holder Material	-		
Fastening	Pin, glue		
Status	Ready		

NOTE: The typical divergence will be changed by different color, chip size and chip position tolerance. The typical total divergence is the full angle measured where the luminous intensity is half of the peak value.



PRODUCT DATASHEET

Virpi series

last update 13/12/2012

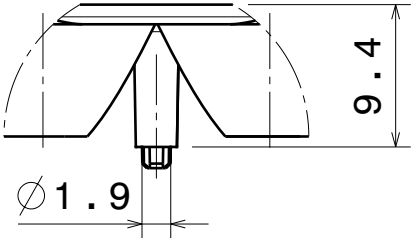
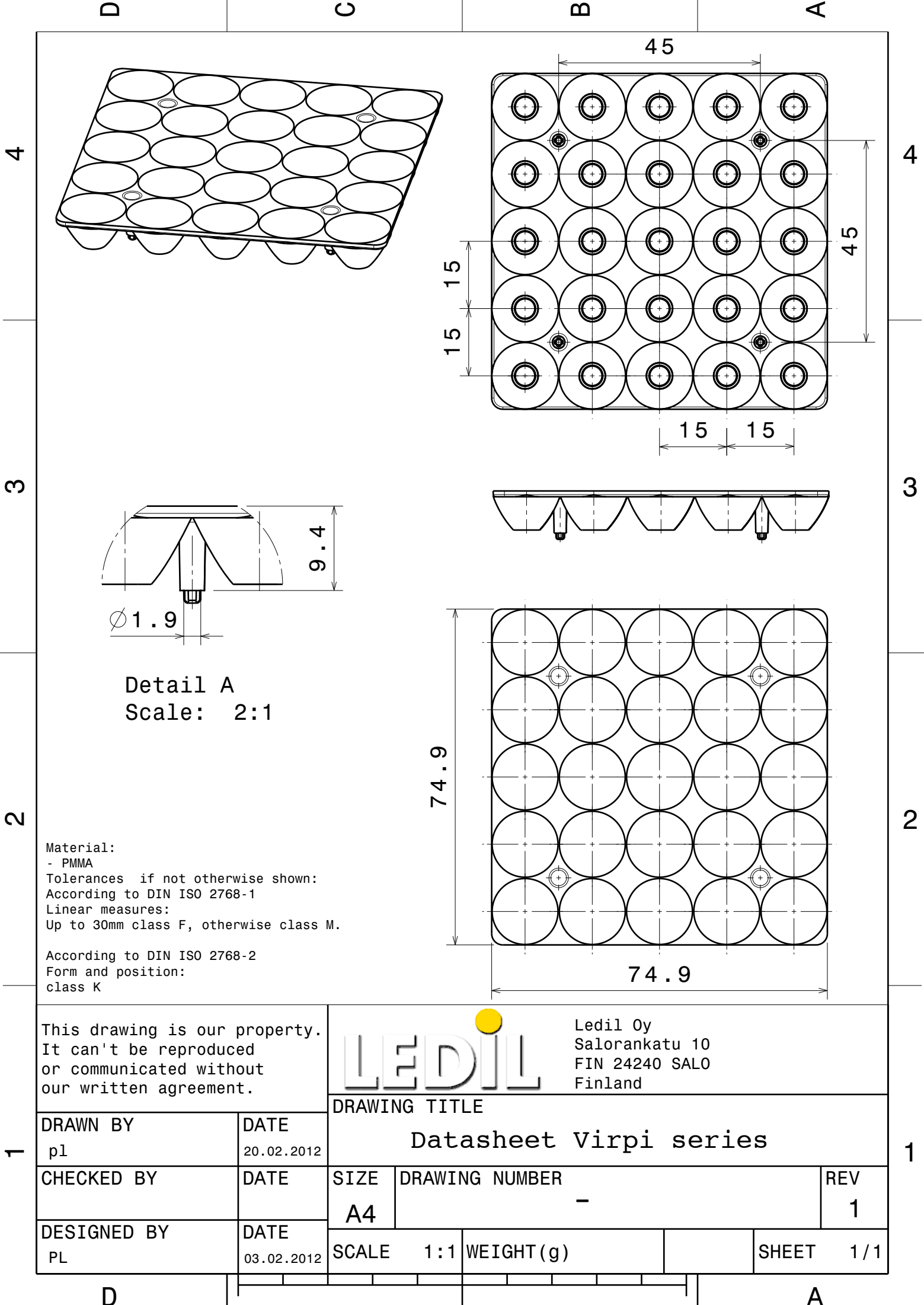
GENERAL INFORMATION

- Product series especially designed & optimized for XB-D series of LEDs.
- Special care taken to make light distribution as uniform as possible.
- Lens material optical grade PMMA with high UV and temperature resistance (105 degrees of Celcius / 220 degrees of Fahrenheit). Allows use of high current and temperature conditions.

Please find more information about used material from below:

http://ledil.fi/sites/default/files/Documents/Technical/Material/PMMA%20N%20UL94_Yellow%20Card.pdf

<http://ledil.fi/sites/default/files/Documents/Technical/Material/PMMA%20N%20PLEXIGLAS-Datasheet.pdf>



Detail A
Scale: 2:1

Material:
- PMMA
Tolerances if not otherwise shown:
According to DIN ISO 2768-1
Linear measures:
Up to 30mm class F, otherwise class M.

According to DIN ISO 2768-2
Form and position:
class K

This drawing is our property.
It can't be reproduced
or communicated without
our written agreement.



Ledil Oy
Salorankatu 10
FIN 24240 SALO
Finland

DRAWING TITLE

Datasheet Virpi series

DRAWN BY pl	DATE 20.02.2012	Datasheet Virpi series					
CHECKED BY	DATE	SIZE A4	DRAWING NUMBER -				REV 1
DESIGNED BY PL	DATE 03.02.2012	SCALE 1:1	WEIGHT (g)			SHEET 1/1	