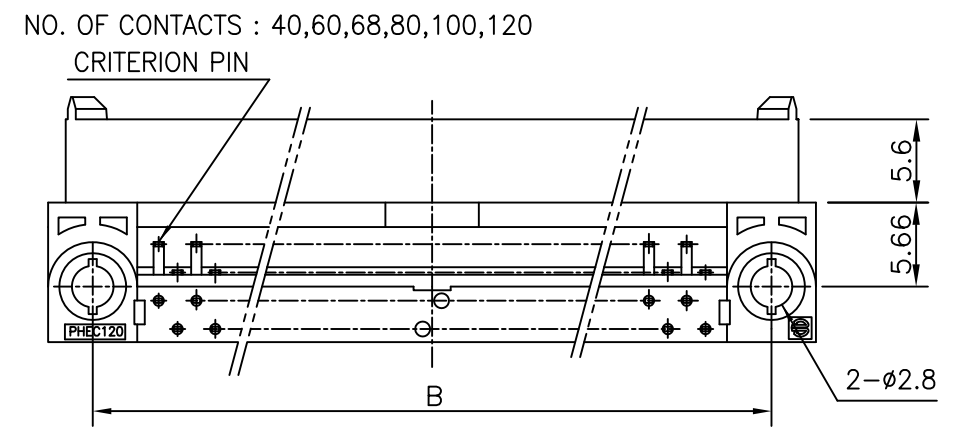
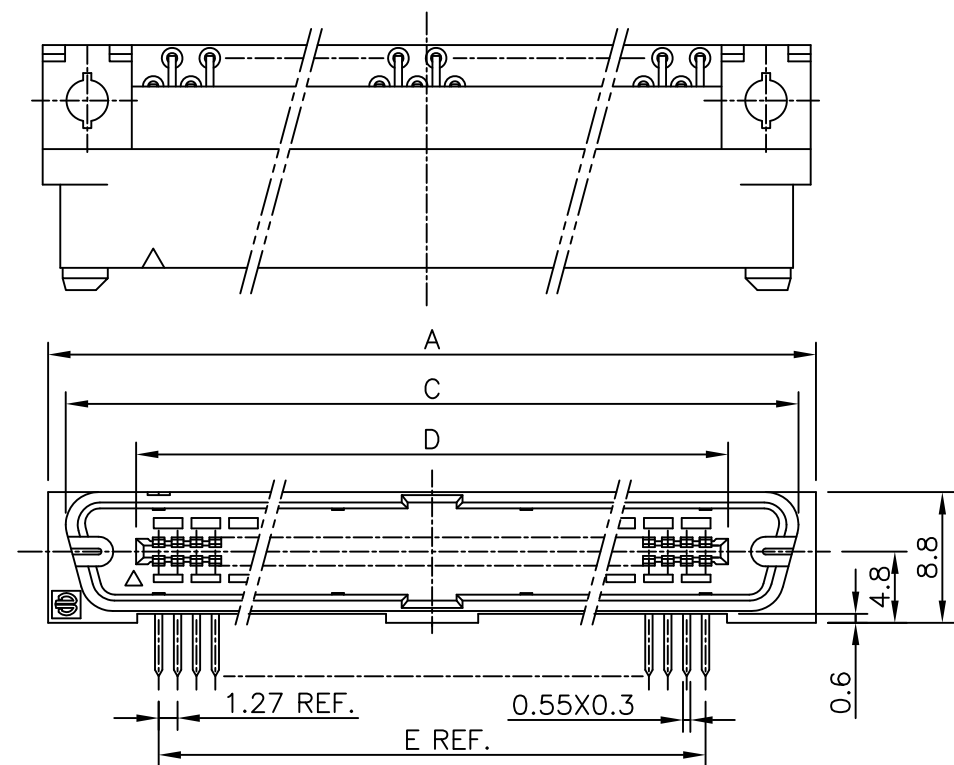


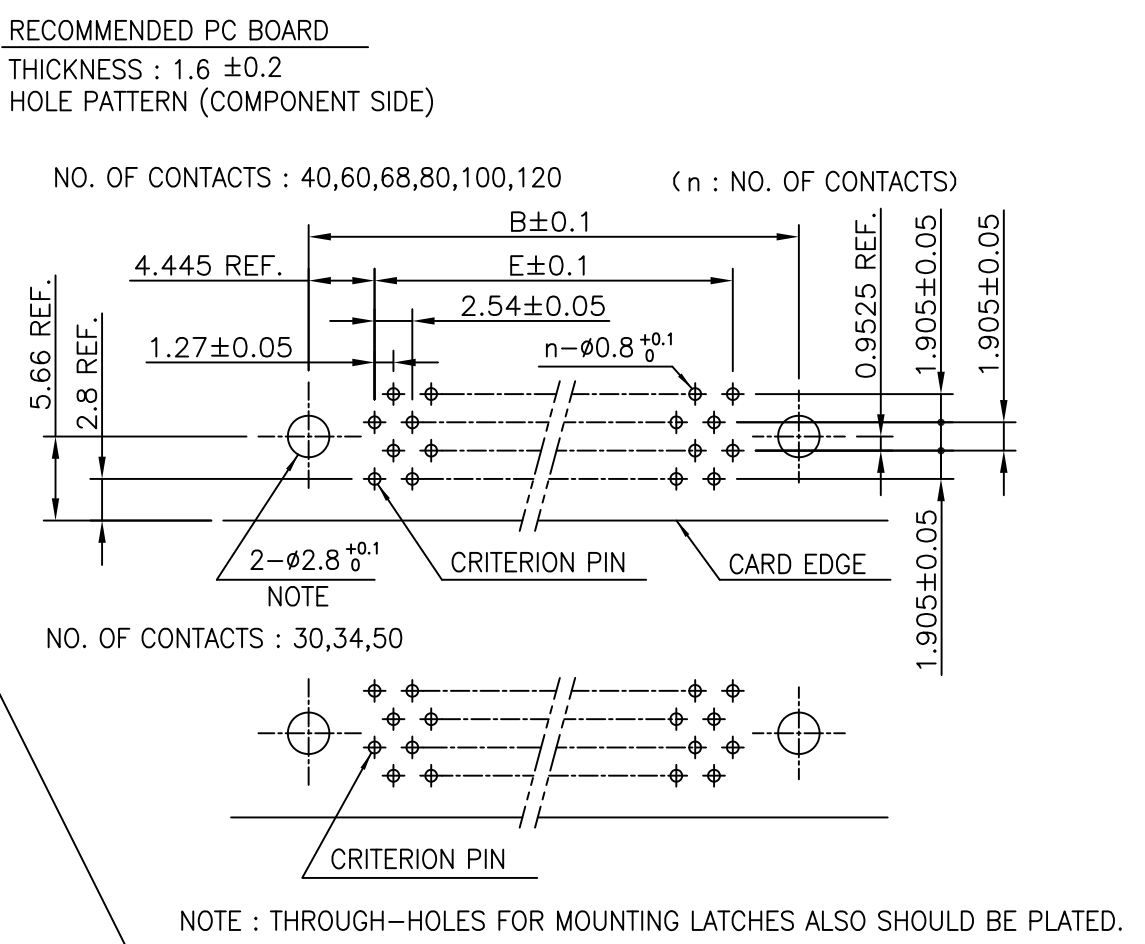
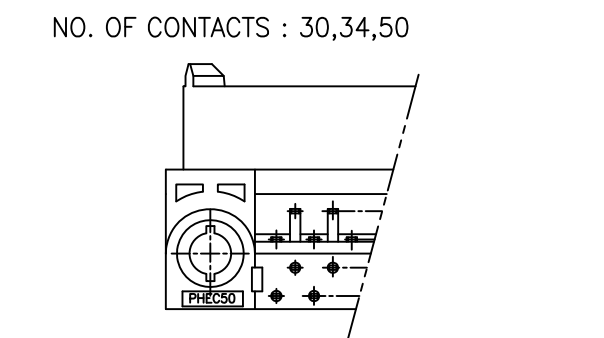
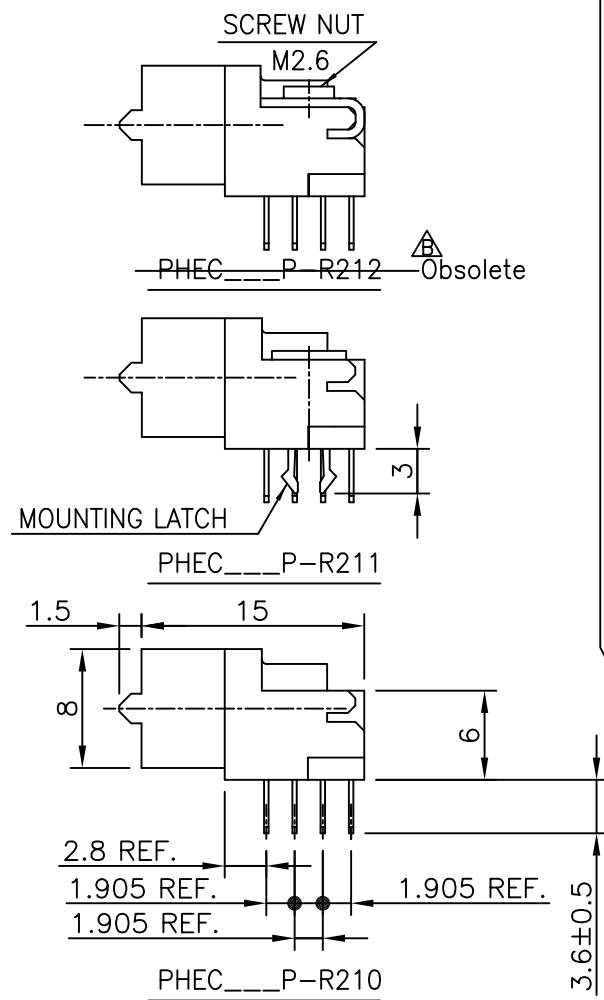


Copyright FCI.

PRODUCT NO.
JSC 97408



- NO. OF CONTACTS : 40,60,68,80,100,120
CRITERION PIN
- NOTES
- 1.BODY MATERIAL : NYLON GLASS FILLED (UL94V-0), COLOR BLACK
 - 2.TERMINAL MATERIAL : PHOSPHOR BRONZE
 - 3.MOUNTING LATCH MATERIAL : PHOSPHOR BRONZE
 - 4.LOCATOR MATERIAL : PBT GLASS FILLED
 - 5.SCREW NUT : STEEL
 - 6.TERMINAL FINISH
CONTACT AREA : GOLD 0.25μm min. OVER NICKEL UNDERLAYER
SOLDER TAILS : PURE Sn 2μm min. OVER NICKEL UNDERLAYER
 - 7.MOUNTING LATCH FINISH : PURE Sn 2μm min. OVER NICKEL UNDERLAYER
 - 8.SCREW FINISH : NICKEL
 - 9.THIS PRODUCT MEETS EUROPEAN UNION DIRECTIVES AND OTHER COUNTRY REGULATIONS AS DESCRIBED IN GS-22-008
 - 10.THE HOUSING WILL WITHSTAND EXPOSURE TO 260 DEGREE PEAK TEMPERATURE FOR 10 SECONDS IN A WAVE SOLDER APPLICATION WITH A 1.6mm MINIMUM THICK CIRCUIT BOARD.



CAT. NO.	NO. OF CONTACTS (MATING SIDE)	DIMENSIONS				
		A	B	C	D	E
PHEC30P-R21_LF	15/ROW X 2 ROWS	32.67	26.67	30.30	20.42	17.78
PHEC34P-R21_LF	17/ROW X 2 ROWS	35.21	29.21	32.84	22.96	20.32
PHEC40P-R21_LF	20/ROW X 2 ROWS	39.02	33.02	36.65	26.77	24.13
PHEC50P-R21_LF	25/ROW X 2 ROWS	45.37	39.37	43.00	33.12	30.48
PHEC60P-R21_LF	30/ROW X 2 ROWS	51.72	45.72	49.35	39.47	36.83
PHEC68P-R21_LF	34/ROW X 2 ROWS	56.80	50.80	54.43	44.55	41.91
PHEC80P-R21_LF	40/ROW X 2 ROWS	64.42	58.42	62.05	52.17	49.53
PHEC100P-R21_LF	50/ROW X 2 ROWS	77.12	71.12	74.75	64.87	62.23
PHEC120P-R21_LF	60/ROW X 2 ROWS	89.82	83.82	87.45	77.57	74.93

mat'l. code				surface	tolerance	projection	product family	CODE
---				ISO 1302	ISO 406 ISO 1101		PHEC	JP
ltr	description	ecn no	dr	date	tolerances unless otherwise specified		title	
A	RELEASED	J08-0178	S.W	2008-4-18	angles		PRINTED CIRCUIT CONNECTOR	
B	EOL of R212LF	ELX-J-17067	S.W	2014-2-27	linear		(CAT.NO.PHEC _ _ _ P-R21_LF)	
					0°±2°	scale N/A	dwg no	sheet 1 of 1 size
					dr	S.Watanabe	2014-2-27	
					enr	S.Watanabe	2014-2-27	
					chr	K.Ito	2014-2-27	
					appd	Y.Kameda	2014-2-27	
sheet index	revision	B					JSC 97408	A3
	sheet	1					Customer Drawing	Rev. B

Mouser Electronics

Authorized Distributor

Click to View Pricing, Inventory, Delivery & Lifecycle Information:

FCI:

[PHEC100P-R211LF](#) [PHEC40P-R211LF](#) [PHEC60P-R211LF](#) [PHEC80P-R211LF](#)