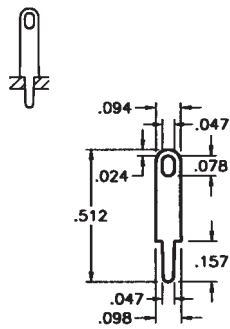


PC TEST POINT TERMINALS

Designers
Choice

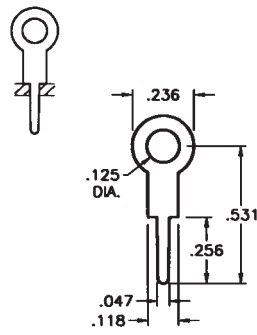


PC TEST PONTs – LOOP TYPES



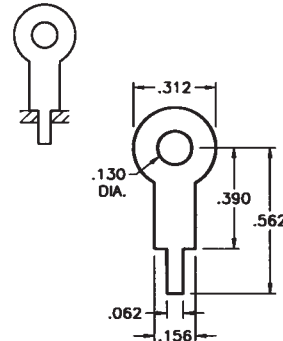
.020 Brass, Tin Plate

CAT. NO. 4953



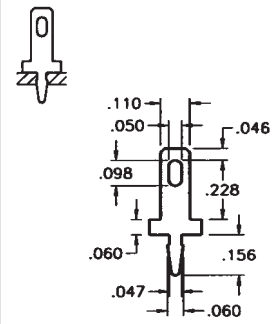
.020 Brass, Tin Plate

CAT. NO. 4954



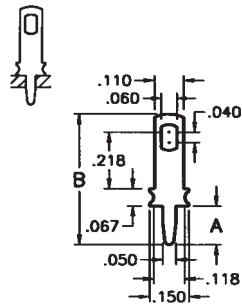
.015 Brass, Tin Plate

CAT. NO. 680



.020 Brass, Tin Plate

CAT. NO. 1250

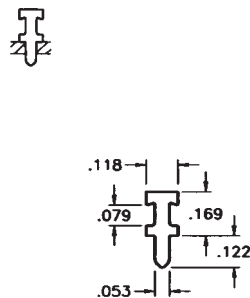


.032 Brass, Tin Plate

| CAT. NO. | A | B |
|----------|------|------|
| 1041 | .275 | .630 |
| 1046 | .150 | .503 |

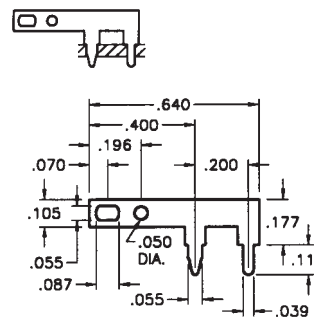
CAT. NO. 1041

CAT. NO. 1046



.025 Brass, Tin Plate

CAT. NO. 4955



.025 Brass, Tin Plate

CAT. NO. 1045

CUSTOM TEST POINT TERMINALS

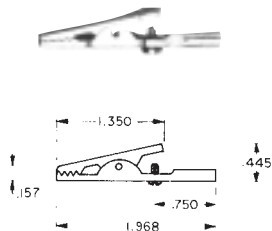
Keystone is fully integrated to meet your total design & production needs.

Manufacturing custom designs & modifications of standard items is our specialty.

Quotations on **special stampings** furnished promptly upon receipt of sample, sketch, print or CAD drawings.

ALLIGATOR CLIPS

LARGE CLIP • SCREW CONNECTION



JAW SPREAD
.315 max.

CAT. NO. 5048

MATERIAL: Clip: Steel, Nickel Plate

MEDIUM CLIP • SOLDER CONNECTION WITH STRAIN RELIEF



INSULATED

CAT. NO. 5038 - NON-INSULATED

| CAT. NO. | INSULATOR COLOR |
|----------|-----------------|
| 5039 | RED |
| 5040 | BLACK |

MATERIAL: Clip: Steel, Nickel Plate Insulator: Vinyl

SMALL CLIP • SOLDER CONNECTION WITH STRAIN RELIEF



INSULATED

CAT. NO. 5033 - NON-INSULATED

JAW SPREAD
.236 max.

| CAT. NO. | INSULATOR COLOR |
|----------|-----------------|
| 5034 | RED |
| 5035 | BLACK |
| 5036 | GREEN |
| 5037 | YELLOW |

MATERIAL: Clip: Steel, Nickel Plate Insulator: Vinyl

LARGE CLIP • SOLDER CONNECTION (BARREL ACCEPTS WIRE OR STANDARD BANANA PLUGS)



INSULATED

CAT. NO. 5044 - NON-INSULATED

JAW SPREAD
.315 max.

| CAT. NO. | INSULATOR COLOR |
|----------|-----------------|
| 5045 | RED |
| 5046 | BLACK |

MATERIAL: Clip: Steel, Nickel Plate Insulator: Vinyl