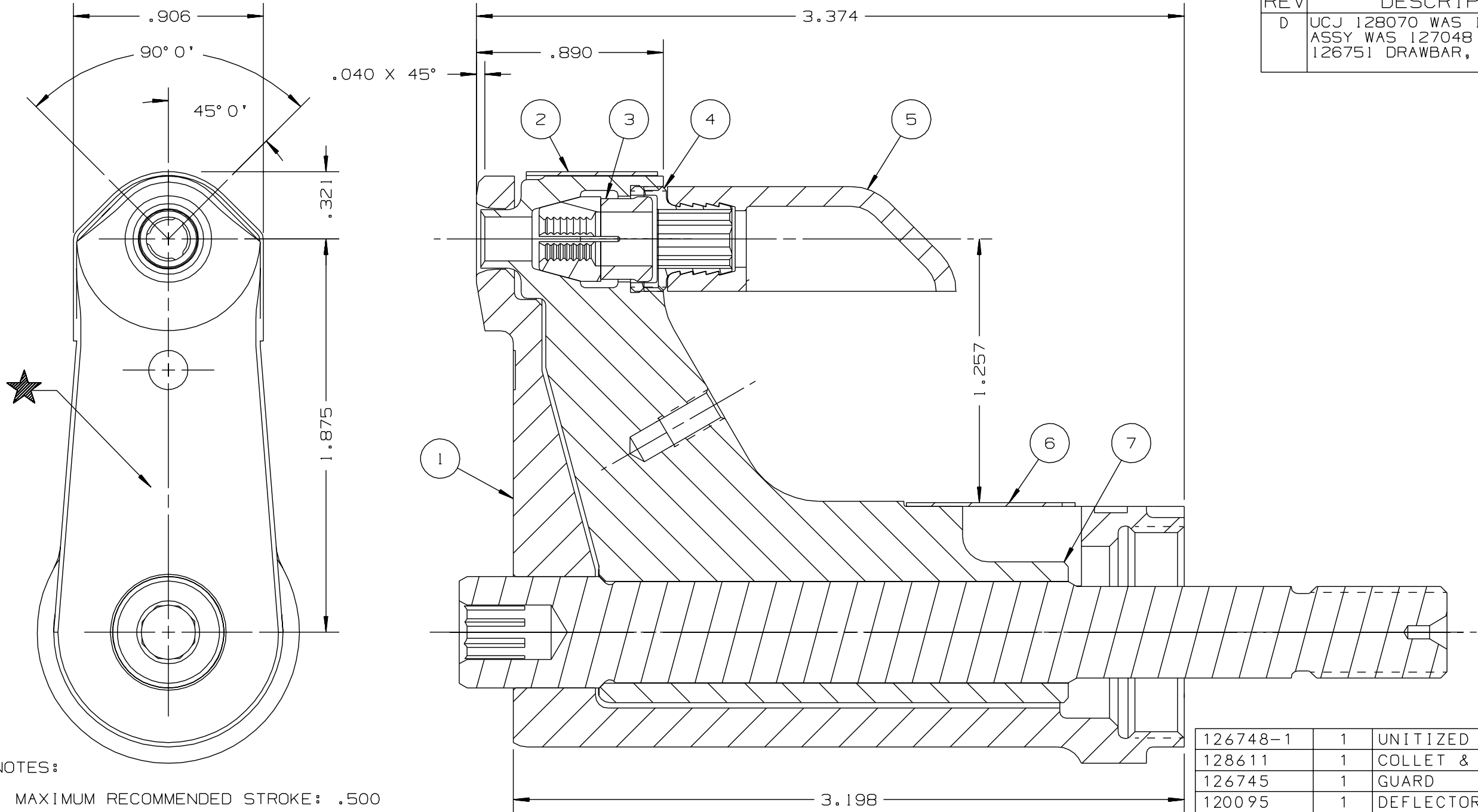


REV	DESCRIPTION	DATE
D	UCJ 128070 WAS 126873, 128611 ASSY WAS 127048 COLLET & 126751 DRAWBAR, ADDED NOTE 7	3/6/08



NOTES:

- 1 MAXIMUM RECOMMENDED STROKE: .500
- 2 FOR USE WITH THE 225/245 TOOL, USE ATTACHMENT P/N 119400-1 AND STROKE LIMITER 118362
- 3 FOR USE WITH 2500 TOOL, USE ATTACHMENT P/N 119400-1 AND STROKE LIMITER KIT 119888
- 4 FOR OTHER TOOLS AND/OR OTHER TOOL AND STROKE COMBINATIONS, CONSULT ENGINEERING DEPARTMENT
- 5 SHIP WITH STOP 126747
- 6 SHIP WITH DEFLECTOR 126748-1
- 7 SHIP WITH (2) .030 SHIMS 128290 REFERENCE PB563 FOR PROPER USE

126748-1	1	UNITIZED DEFLECTOR	8
128611	1	COLLET & DRAWBAR ASSY	7
126745	1	GUARD	6
120095	1	DEFLECTOR	5
122912	1	BARBED RETAINER	4
128070	1	UNITIZED CHUCK JAW	3
126746	1	TOP GUARD	2
127047	1	ANVIL	1
PART NO.	QTY	DESCRIPTION	ITEM

IDENTIFICATION PER SPEC 42-311: ★ ETCH			
ITAR:	HUCK INTERNATIONAL, INC., I.S.D. 1 CORPORATE DR, P.O. BOX 2270 KINGSTON, NEW YORK 12401		
ECCN: EAR99	NOSE ASSEMBLY -07 LGP LONG		
SCH B#: 8467.99.0190	DET: MVM	CK:	DATE: 02/19/02 SCALE: 2:1
HTS: 8467.99.0190	B	99-3762-1	