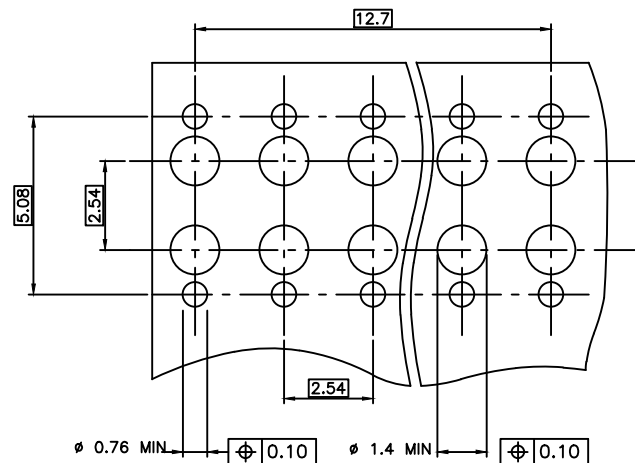
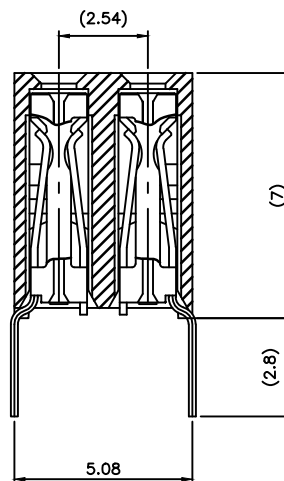
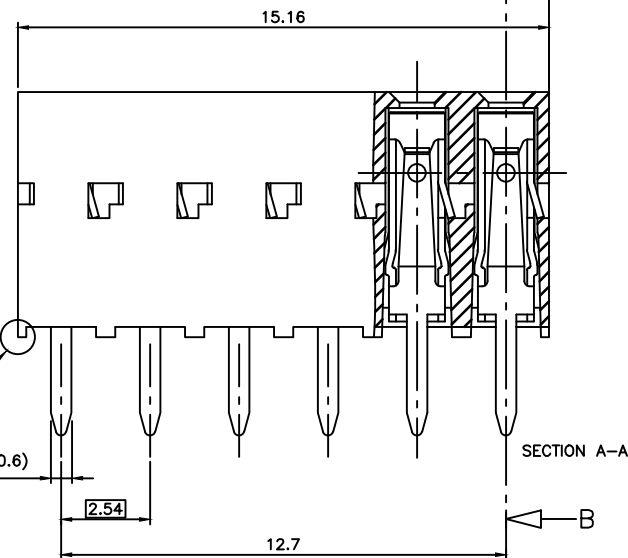
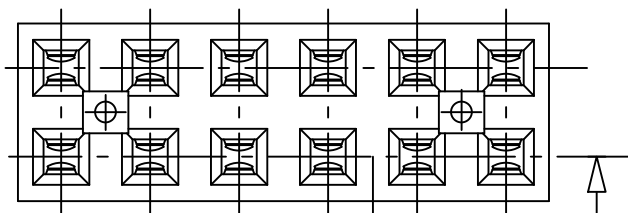


PRODUCT N°  
10079008-Y06(H)LF

NOTE 4 — RoHS COMPATIBLE, SEE NOTE 6



RECOMMENDED PC BOARD THICKNESS: 1.6 ±0.2

#### NOTES:

- 1 - MATERIAL HOUSING: THERMOPLASTIC POLYESTER 30% GLASS FILLED, COLOUR BLUE. FLAME RETARDANT PER UL-94 CATEGORY V0.
- 2 - MATERIAL TERMINAL: PHOSPHOR BRONZE EXTRA HARD.
- 3 - MATERIAL HOUSING HIGH TEMPERATURE: PCT 30% GLASS FILLED COLOUR GREY. FLAME RETARDANT PER UL-94V0.
- 4 - THE DASH "H" AT THE END OF THE P/N TO INDICATE A HIGH TEMPERATURE HOUSING.
- 5 - CONNECTOR MEANT TO BE USED FOR PC BOARD WITH NONE PLATED THROUGH HOLES.
- 6 - **RoHS COMPATIBLE PRODUCT SPECIFICATIONS**
  - a - **PLATING:**
    - "LF" MEANS THE PRODUCT IS LEAD-FREE, 2µm MINIMUM MATTE TIN OVER 1.27µm MINIMUM NICKEL UNDERPLATE.
  - b - **MANUFACTURING PROCESS COMPATIBILITY**
    - THE HOUSING WILL WITHSTAND EXPOSURE TO 260°C ±5°C SOLDER BATH TEMPERATURE FOR 5 SECONDS IN A WAVE SOLDER APPLICATION WITH A 1.6mm MIN THICK CIRCUIT BOARD.
  - c - **LABELING:**
    - MEETS PACKAGING SPECS AS PER GS-14-920
  - d - **LEGAL STATEMENT:** SEE GS-47-0004
- 7 - END STAND-OFFS FOR 2x2 UP TO 2X5 POS  
NO END STAND-OFFS FOR 2x6 UP TO 2x50 POS

10079008-406(H)LF	5µm Sn	Sn
10079008-306(H)LF	0.76µm GOLD	Sn
PLATING CODE	CONTACT AREA	SOLDER TAIL
	PLATING THICKNESS OVER 1.27µm Ni	

mat'l. code	surface	tolerance	projection	product family
SEE NOTES	ISO 1902	ISO 406	ISO 101	DX VCC DR
ltr	ecn	no	dr	date
A	F07-0247	PNZ	07.08.16	
B	F07-0271	LMU	07.12.06	
C	F11-0043	JCO	11.03.30	
D	B-19115	LMU	14.10.21	
engr	P. NIZZI	07.05.10		
chr	P. NIZZI	07.05.10		
app	P. NIZZI	07.05.10		
sheet	revision			
index	sheet			

title	DUAL ENTRY
dwg no	10079008
type	CUSTOMER Drawing
scale	10:1
sheet	1 of 1
size	A2