

DESIGNED & DIMENSIONED  
IN MILLIMETERS[INCHES]

DO NOT  
SCALE FROM  
THIS PRINT

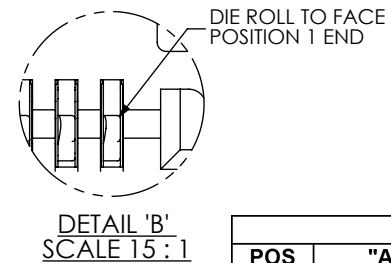
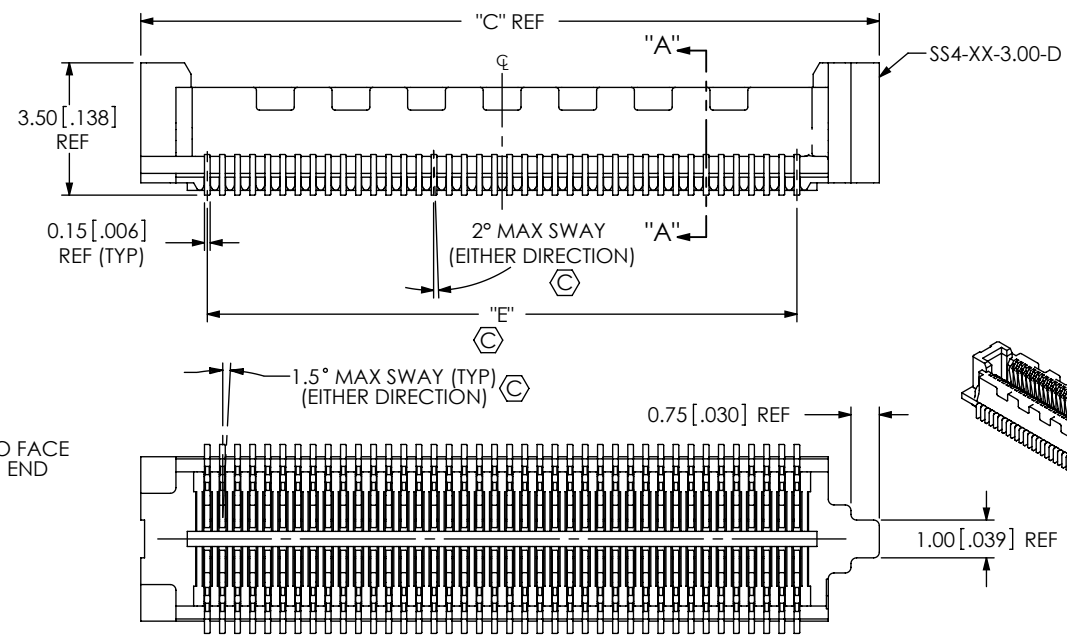
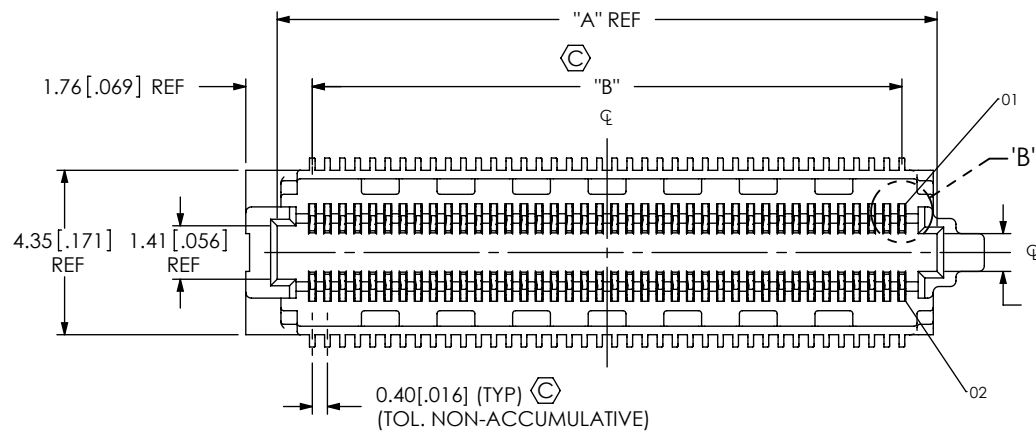


TABLE 1				
POS	"A"	"B"	"C"	"E"
-10	5.46 [0.215]	3.60 [0.142]	7.54 [0.297]	3.60 [0.142]
-15	7.46 [0.294]	5.60 [0.220]	9.54 [0.376]	5.60 [0.220]
-20	9.46 [0.372]	7.60 [0.299]	11.54 [0.454]	7.60 [0.299]
-30	13.46 [0.530]	11.60 [0.457]	15.54 [0.612]	11.60 [0.457]
-40	17.46 [0.687]	15.60 [0.614]	19.54 [0.769]	15.60 [0.614]
-50	21.46 [0.845]	19.60 [0.772]	23.54 [0.927]	19.60 [0.772]

- NOTES:
- ⊗ REPRESENTS A CRITICAL DIMENSION.
  - MINIMUM PUSHOUT FORCE: 1.11N[.25 LB].
  - L: LATCHING OPTION NOT INTENDED FOR ALIGNMENT TO PCB. AUTOMATED PLACEMENT IS RECOMMENDED.
  - FOR QUANTITIES UP TO 49 PIECES, NO LEADER, TRAILER, OR REEL WILL BE SUPPLIED. FOR QUANTITIES OF 50-124 PIECES, NO LEADER OR TRAILER WILL BE SUPPLIED.

SS4-XX-X.XX-X-D-X-XX-TR

**No OF POSITIONS**  
-10, -15, -20, -30, -40, -50  
(PER ROW)

**LEAD STYLE**  
-3.00: SEE FIG 1  
(USE C-229-3.00-X)  
-3.50: SEE FIG 2, SHT 2  
(USE C-229-3.50-X)

**PLATING**  
-L: 10μ" SELECTIVE GOLD IN CONTACT  
AREA, MATTE TIN ON TAIL  
(USE C-229-X.XX-X)

**ROW SPECIFICATION**  
-D: DOUBLE

**PACKAGING**  
-TR: TAPE AND REEL  
PACKAGING  
(SEE NOTE 4)

**PLACEMENT PAD**  
-K: KAPTON PAD  
(USE K-DOT-.138-.250-.005)  
(SEE FIG 4 & 5, SHT 3)  
\*\*PA: PICK & PLACE WITH  
ALIGNMENT PINS  
(SEE FIG 6, SHT 4)  
(NOT AVAILABLE IN -15 POS)

**OPTIONS**  
\*, \*\*L: LATCHING  
(USE WT-40-X.XX-T)  
(SEE FIG 3, SHT 2 AND NOTE 3)  
(LEAVE BLANK FOR NO OPTION)

\* = TOOLED ONLY FOR THE -3.00 LEAD STYLE  
\*\* = AVAILABLE FOR EXISTING CUSTOMERS ONLY

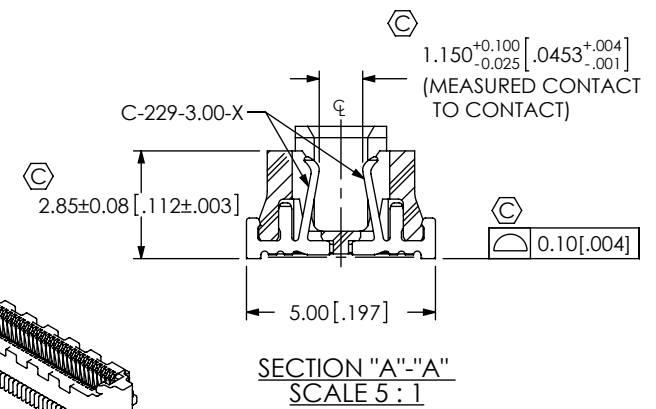


FIG 1  
SS4-40-3.00-L-D SHOWN

TABLE 2 REF			
STACK HEIGHT			
SS4 LEAD STYLE	ST4 LEAD STYLE		
	-1.00	-1.50	-2.50
	4.0[.16]	4.5[.18]	5.5[.22]
	4.5[.18]	5.0[.20]	6.0[.24]

UNLESS OTHERWISE SPECIFIED,  
DIMENSIONS ARE IN MILLIMETERS.  
TOLERANCES ARE:  
DECIMALS ANGLES  
.X: ±0.3 [.01] 2°  
.XX: ±0.13 [.005]  
.XXX: ±0.051 [.0020]

**PROPRIETARY NOTE**  
THIS DOCUMENT CONTAINS INFORMATION  
CONFIDENTIAL AND PROPRIETARY TO  
SAMTEC, INC. AND SHALL NOT BE REPRODUCED  
OR TRANSFERRED TO OTHER DOCUMENTS OR  
DISCLOSED TO OTHERS OR USED FOR ANY  
PURPOSE OTHER THAN THAT WHICH IT WAS  
OBTAINED WITHOUT THE EXPRESSED WRITTEN  
CONSENT OF SAMTEC, INC.

**MATERIAL:**  
INSULATOR: LCP, UL 94 V0, COLOR: BLACK  
CONTACT: PHOS BRONZE  
LATCH: PHOS BRONZE

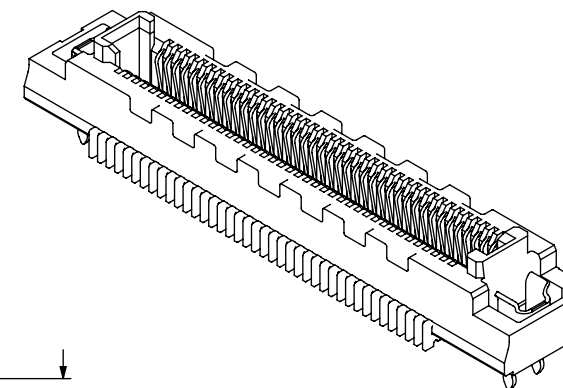
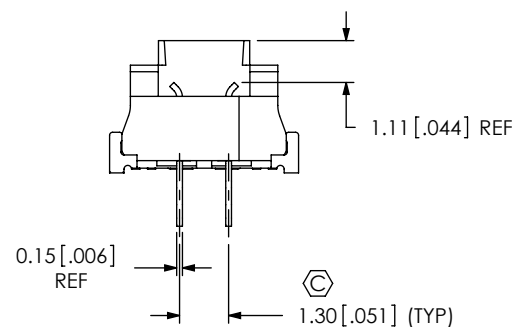
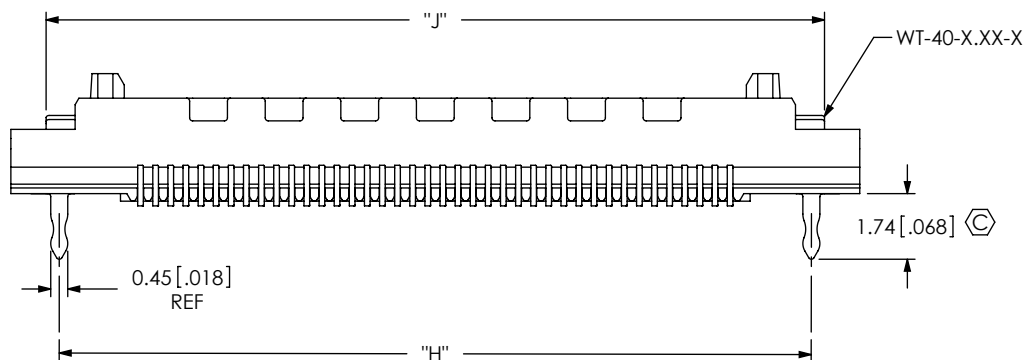
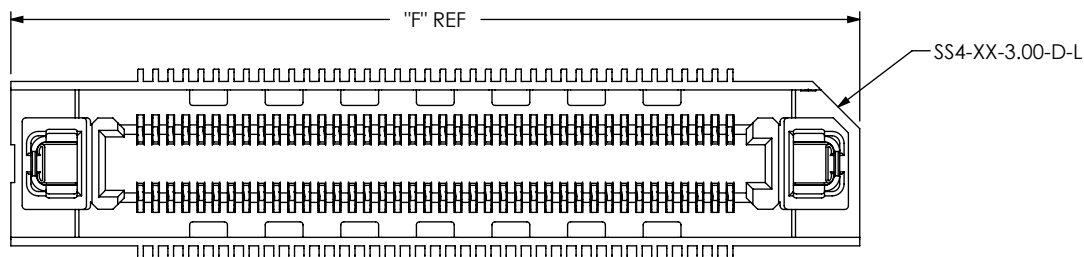
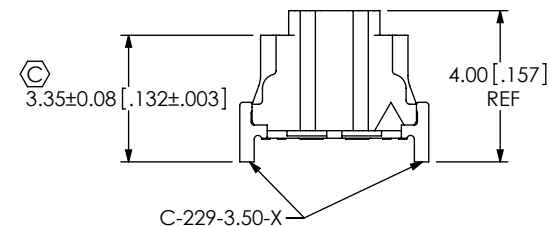
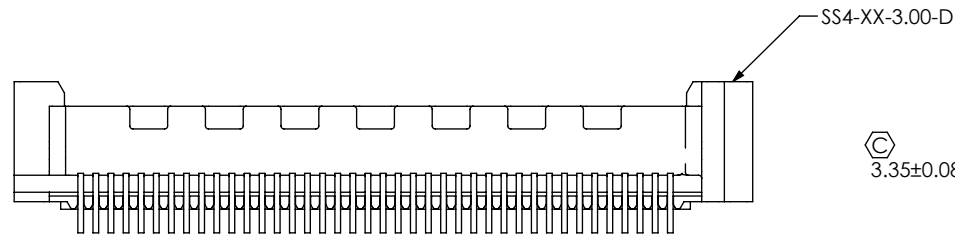
DO NOT SCALE DRAWING SHEET SCALE: 2:1

520 PARK EAST BLVD, NEW ALBANY, IN 47150  
PHONE: 812-944-6733 FAX: 812-948-5047  
e-Mail: info@SAMTEC.com code: 55322

DESCRIPTION:  
0.4mm[.016] SOCKET STRIP ASSEMBLY

DWG. NO.  
SS4-XX-X.XX-X-D-X-XX-TR

BY: CLAY W 4/19/2007 SHEET 1 OF 4



**FIG 3**  
\* \*\*-L: LATCHING OPTION  
SS4-40-3.00-X-D-L SHOWN  
(DIFFERENT AS SHOWN, OTHERWISE SAME AS FIG 1)  
\* = TOOLED ONLY FOR THE -3.00 LEAD STYLE  
\*\* = AVAILABLE FOR EXISTING CUSTOMERS ONLY

TABLE 5			
POS	"F"	"H"	"J"
-10	10.46 [0.412]	7.90 [0.311]	8.60 [0.339]
-15	12.46 [0.491]	9.90 [0.390]	10.60 [0.417]
-20	14.46 [0.569]	11.90 [0.469]	12.60 [0.496]
-30	18.46 [0.727]	15.90 [0.626]	16.60 [0.654]
-40	22.46 [0.884]	19.90 [0.783]	20.60 [0.811]
-50	26.46 [1.042]	23.90 [0.941]	24.60 [0.969]

TABLE 6	
LEAD STYLE	LATCH
-3.00	W-40-3.00-T
-3.50	*WT-40-3.50-T

(\* = NOT TOOLED)

**PROPRIETARY NOTE**

THIS DOCUMENT CONTAINS INFORMATION CONFIDENTIAL AND PROPRIETARY TO SAMTEC, INC. AND SHALL NOT BE REPRODUCED OR TRANSFERRED TO OTHER DOCUMENTS OR DISCLOSED TO OTHERS OR USED FOR ANY PURPOSE OTHER THAN THAT WHICH IT WAS OBTAINED WITHOUT THE EXPRESSED WRITTEN CONSENT OF SAMTEC, INC.

DO NOT SCALE DRAWING

SHEET SCALE: 5:1

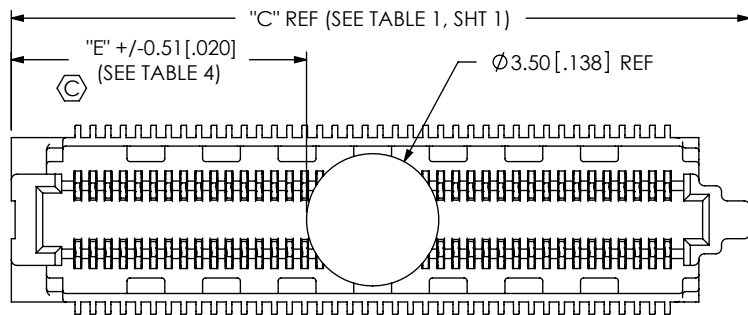
**samtec**

520 PARK EAST BLVD, NEW ALBANY, IN 47150  
PHONE: 812-944-6733 FAX: 812-948-5047  
e-Mail: info@SAMTEC.com code: 55322

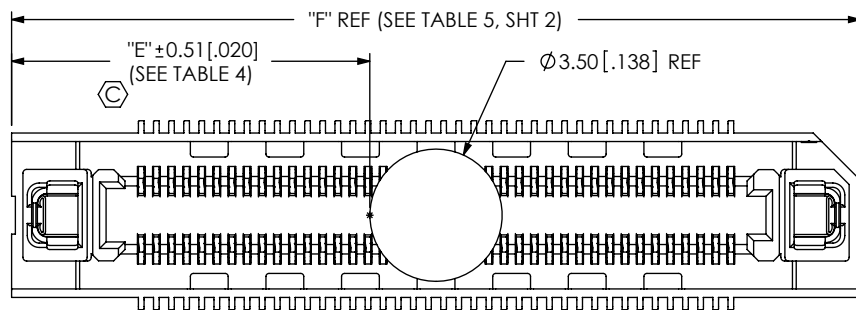
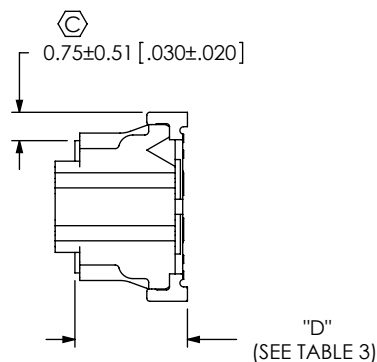
DESCRIPTION:  
0.4mm [.016] SOCKET STRIP ASSEMBLY

DWG. NO.  
**SS4-XX-X.XX-X-D-X-XX-TR**

BY: CLAY W 4/19/2007 SHEET 2 OF 4



**FIG 4**  
-K: KAPTON OPTION  
SS4-40-3.00-X-D-K SHOWN  
(DIFFERENT AS SHOWN, OTHERWISE SAME AS FIG 1)



**FIG 5**  
-K: KAPTON OPTION(W/ -L OPTION)  
SS4-40-3.00-X-D-L-K SHOWN  
(DIFFERENT AS SHOWN, OTHERWISE SAME AS FIG 1)

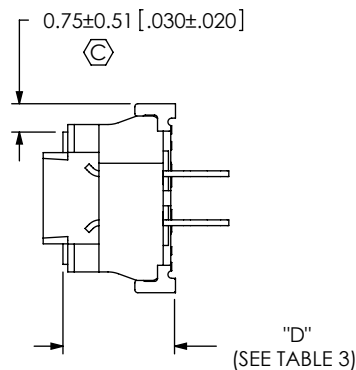


TABLE 3	
LEAD STYLE	"D"
-3.00	2.98 [.117]
-3.50	3.48 [.137]

TABLE 4		
POS	"E"	"E"
	W/O -L OPTION	W/ -L OPTION
-10	1.81 [0.071]	3.48 [0.137]
-15	2.81 [0.111]	4.48 [0.176]
-20	3.81 [0.150]	5.48 [0.216]
-30	5.81 [0.229]	7.48 [0.294]
-40	7.81 [0.307]	9.48 [0.373]
-50	9.81 [0.386]	11.48 [0.452]

**PROPRIETARY NOTE**

THIS DOCUMENT CONTAINS INFORMATION  
CONFIDENTIAL AND PROPRIETARY TO  
SAMTEC, INC. AND SHALL NOT BE REPRODUCED  
OR TRANSFERRED TO OTHER DOCUMENTS OR  
DISCLOSED TO OTHERS OR USED FOR ANY  
PURPOSE OTHER THAN THAT WHICH IT WAS  
OBTAINED WITHOUT THE EXPRESSED WRITTEN  
CONSENT OF SAMTEC, INC.

DO NOT SCALE DRAWING

SHEET SCALE: 5:1

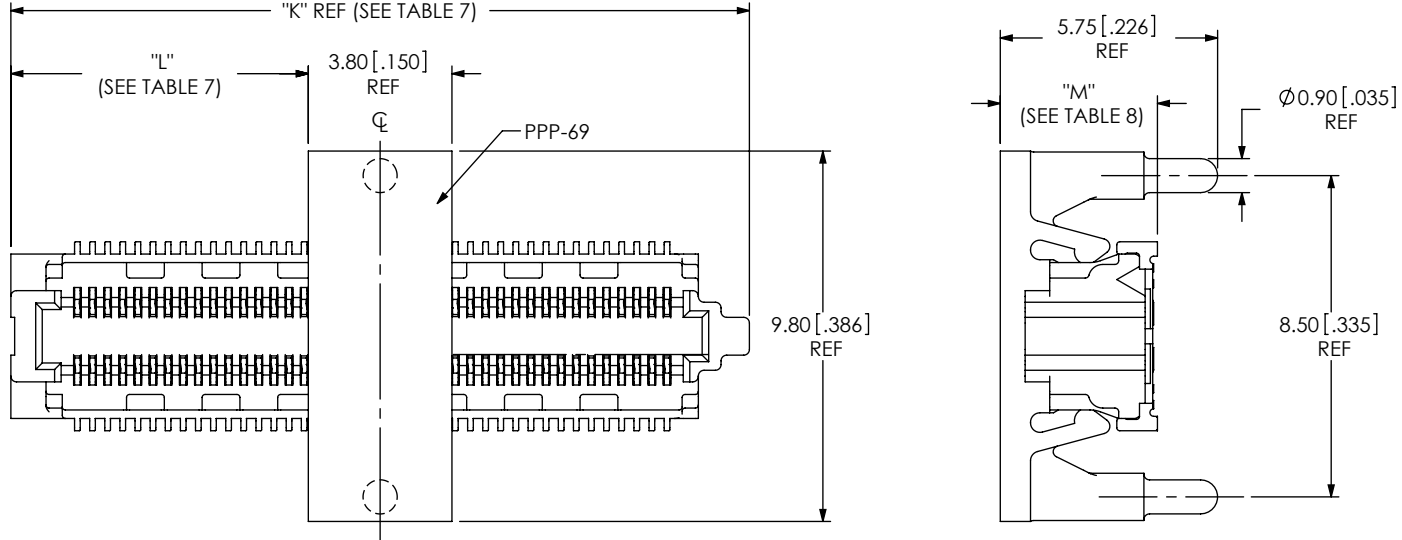
**samtec**

520 PARK EAST BLVD, NEW ALBANY, IN 47150  
PHONE: 812-944-6733 FAX: 812-948-5047  
e-Mail: info@SAMTEC.com code: 55322

DESCRIPTION:  
0.4mm [.016] SOCKET STRIP ASSEMBLY

DWG. NO.  
**SS4-XX-X.XX-X-D-X-XX-TR**

BY: CLAY W 4/19/2007 SHEET 3 OF 4



**FIG 6**  
\*\*-PA: PICK & PLACE PAD WITH  
ALIGNMENT PINS  
SS4-40-3.00-X-D-PA SHOWN  
(DIFFERENT AS SHOWN, OTHERWISE SAME AS FIG 1)  
(NOT AVAILABLE IN -15 POS)  
\*\* = AVAILABLE FOR EXISTING CUSTOMERS ONLY


TABLE 8	
LEAD STYLE	"M"
-3.00	4.16 [.164]
-3.50	4.66 [.183]

TABLE 7				
POS	"K" W/O -L OPTION	"K" W/ -L OPTION	"L" W/O -L OPTION	"L" W/ -L OPTION
-10	7.54 [0.297]	10.46 [0.412]	1.87 [0.074]	3.33 [0.131]
-20	11.54 [0.454]	14.46 [0.569]	3.87 [0.152]	5.33 [0.210]
-30	15.54 [0.612]	18.46 [0.727]	5.87 [0.231]	7.33 [0.289]
-40	19.54 [0.769]	22.46 [0.884]	7.87 [0.310]	9.33 [0.367]
-50	23.54 [0.927]	26.46 [1.042]	9.87 [0.389]	11.33 [0.446]

**PROPRIETARY NOTE**  
THIS DOCUMENT CONTAINS INFORMATION  
CONFIDENTIAL AND PROPRIETARY TO  
SAMTEC, INC. AND SHALL NOT BE REPRODUCED  
OR TRANSFERRED TO OTHER DOCUMENTS OR  
DISCLOSED TO OTHERS OR USED FOR ANY  
PURPOSE OTHER THAN THAT WHICH IT WAS  
OBTAINED WITHOUT THE EXPRESSED WRITTEN  
CONSENT OF SAMTEC, INC.

DO NOT SCALE DRAWING

SHEET SCALE: 5:1



520 PARK EAST BLVD, NEW ALBANY, IN 47150  
PHONE: 812-944-6733 FAX: 812-948-5047  
e-Mail: info@SAMTEC.com code: 55322

DESCRIPTION:  
0.4mm[.016] SOCKET STRIP ASSEMBLY

DWG. NO.  
SS4-XX-X.XX-X-D-X-XX-TR

BY: CLAY W 4/19/2007 SHEET 4 OF 4