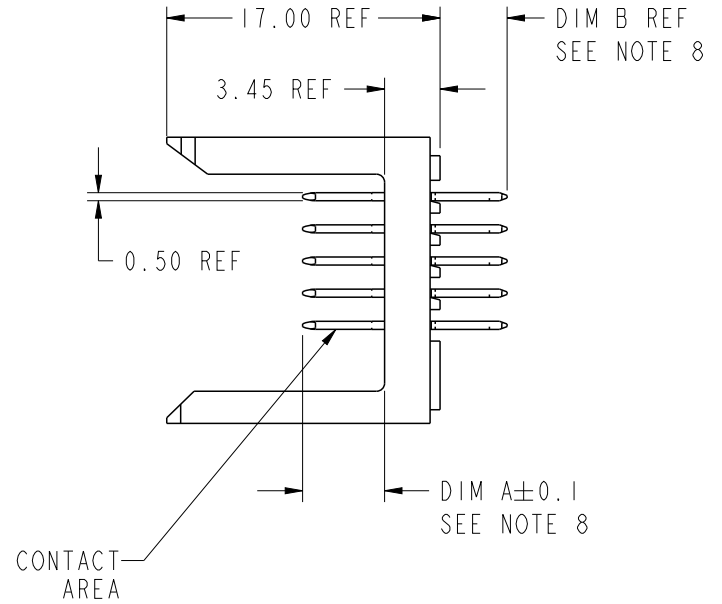
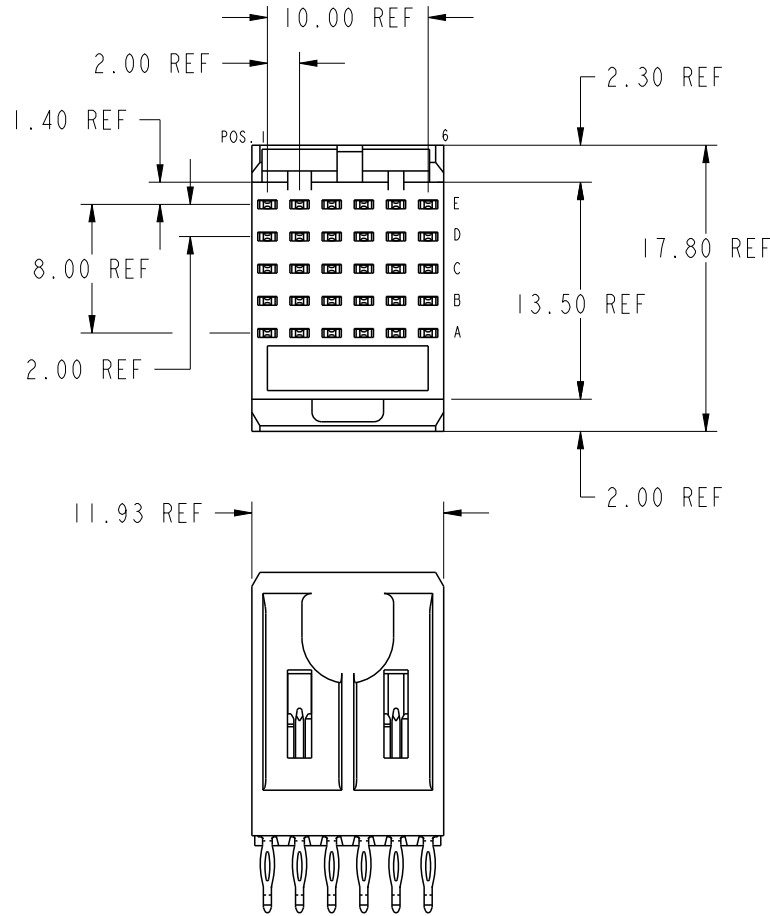


PRODUCT NUMBER
85674-XYX OR 85674-XXXX
85674-XYXLF OR 85674-XXXXLF



spec ref -		dr Terran Huang 2010/07/09		projection 	MM 	size A4	scale 21:10
tolerance std ISO 406 ISO 1102		eng Narayanan, Aru 2018/10/03				ecn no ELX-I-31392-1	
TOLERANCES UNLESS OTHERWISE SPECIFIED		chr -				rel level Released	
surface		appr K-Paul Biju 2018/10/04		product family METRAL		rev	
ISO 1302	linear	0.X	±0.3	Amphenol FCi	title METRAL SIGNAL HEADER 1 MOD, 5 ROW PRESS-FIT	dwg no 85674	
		0.XX	±0.13			rev CK	
		0.XXX	±0.051				
	angular	0°	±2°	cat. no. *	Product - Customer Drw		sheet 1 of 10

A

B

C

D

METRAL P/N	ROW	CONTACT CODE MOD. I						METRAL P/N	ROW	CONTACT CODE MOD. I						METRAL P/N	ROW	CONTACT CODE MOD. I						METRAL P/N	ROW	CONTACT CODE MOD. I						METRAL P/N	ROW	CONTACT CODE MOD. I									
		1	2	3	4	5	6			1	2	3	4	5	6			1	2	3	4	5	6			1	2	3	4	5	6			1	2	3	4	5	6	1	2	3	4
85674-X01	E	1	1	1	1	1	85674-X05	E	8	8	8	8	8	85674-X09	E	5	5	5	5	5	85674-X13	E	1	1	-	1	1	85674-X17	E	22	22	22	22	22	85674-X21	E	19	2	4	4	2	4	
	D	1	1	1	1	1		D	8	8	8	8	8		D	5	5	5	5	5		D	1	1	-	1	1		D	22	22	22	31	22		22	D	19	2	4	4	2	4
	C	1	1	2	2	2		C	8	8	8	8	8		C	5	5	5	5	5		C	1	1	-	-	-		C	22	22	22	22	22		22	C	19	2	4	4	2	4
	B	1	1	1	1	1		B	5	5	5	5	5		B	5	5	5	5	5		B	1	1	-	1	1		B	22	22	22	22	22		22	B	19	2	4	4	2	4
85674-X01LF	A	1	1	1	1	1	85674-X05LF	A	5	5	5	5	5	85674-X09LF	A	5	5	5	5	5	85674-X13LF	A	1	1	-	1	1	85674-X17LF	A	22	22	22	22	7	22	85674-X21LF	A	19	2	4	4	2	4

spec ref	*	dr	Terran Huang	2010/07/09	projection	MM	size	A4	scale	1:10
tolerance std	ISO 406 ISO 1102	eng	Narayanan, Aru	2018/10/03			ecn no	ELX-I-31392-1		
surface	3.200	chr	-	-				rel level	Released	
ISO 1302	linear	appr	K-Paul Biju	2018/10/04	product family	METRAL			rev	CK
	angular	Amphenol FCI			METRAL SIGNAL HEADER			85674		
		TOLERANCES UNLESS OTHERWISE SPECIFIED			1 MOD, 5 ROW PRESS-FIT			Product - Customer Drw		sheet 3 of 10
		0.X	±0.3		cat. no.			-		
		0.XX	±0.13		PDS: Rev :CK			STATUS:Released		
		0.XXX	±0.051		Printed: Oct 04, 2018					

A

B

C

D

METRAL P/N	ROW	CONTACT CODE MOD. I					METRAL P/N	ROW	CONTACT CODE MOD. I					METRAL P/N	ROW	CONTACT CODE MOD. I					METRAL P/N	ROW	CONTACT CODE MOD. I					METRAL P/N	ROW	CONTACT CODE MOD. I																
		1	2	3	4	5			6	1	2	3	4			5	6	1	2	3			4	5	6	1	2			3	4	5	6	1	2	3	4	5	6	1	2	3	4	5	6	
85674-X25	E	2	2	2	2	2	85674-X29	E	3	3	3	3	1	3	85674-X33	E	2	2	2	2	2	85674-X37	E	2	2	2	2	2	4	85674-X41	E	1	1	1	1	2	3	85674-X45	E	3	3	3	3	2	3	
	D	2	2	2	2	2		D	3	3	3	3	3	3		D	2	2	2	2	2		D	2	2	2	2	2	4		D	2	2	2	1	1	3		D	3	3	3	3	3	3	
	C	2	2	2	2	2		C	3	3	3	3	3	3		C	2	2	4	4	2	2		C	2	2	2	2	2	4		C	2	2	2	2	2	3		C	3	3	3	3	3	3
85674-X25LF	B	2	-	-	-	2	85674-X29LF	B	3	3	3	3	3	3	85674-X33LF	B	2	2	2	2	2	2		B	2	2	2	2	2	4		B	2	2	2	2	2	3		B	3	3	3	3	3	3
	A	2	-	2	2	-		A	3	3	3	3	3	3		A	2	2	4	4	2	2		A	2	2	2	2	2	4		A	2	2	1	1	1	3		A	3	3	3	3	3	3

spec ref	*	dr	Terran Huang	2010/07/09	projection		size	A4	scale	1:10			
tolerance std	ISO 406 ISO 1102	eng	Narayanan, Aru	2018/10/03	chr	-	ecn no	ELX-I-31392-1	rel level	Released			
surface	3.200	appr	K-Paul Biju	2018/10/04	product family	METRAL	rel level	Released					
ISO 1302	linear	0.X	±0.3	Amphenol FCI	METRAL SIGNAL HEADER					dwg no	85674	rev	CK
		0.XX	±0.13		1 MOD, 5 ROW PRESS-FIT								
	angular	0°	±2°		cat. no.	-	Product - Customer Drw	sheet 4 of 10					

A

B

C

D

METRAL P/N	ROW	CONTACT CODE MOD. I					
		1	2	3	4	5	6
85674-X49	E	3	3	3	3	3	3
	D	3	3	3	3	3	3
	C	-	-	3	3	3	3
	B	-	-	-	-	3	3
	A	3	3	-	-	3	3
85674-X49LF	E	3	3	3	3	3	3
	D	3	3	3	3	3	3
	C	-	-	3	3	3	3
	B	-	-	-	-	3	3
	A	3	3	-	-	3	3

spec ref	*	dr	Terran Huang	2010/07/09	projection	MM	size	A4	scale	1:10
tolerance std	ISO 406 ISO 1102	eng	Narayanan, Aru	2018/10/03			ecn no	ELX-I-31392-1		
surface	3.200	chr	-	-			rel level	Released		
ISO 1302	linear	appr	K-Paul Biju	2018/10/04	product family	METRAL			rev	CK
	0.X ±0.3	Amphenol FCI METRAL SIGNAL HEADER				dwg no	85674			
	0.XX ±0.13									
	0.XXX ±0.051									
	angular	0° ±2°	cat. no.	-	Product - Customer Drw	sheet	5 of 10			

A

B

C

D

METRAL P/N	ROW	CONTACT CODE MOD. I					
		1	2	3	4	5	6
85674-X73	E	20	6	8	8	6	20
	D	20	6	8	8	6	20
	C	20	6	8	8	6	20
	B	20	6	8	8	6	20
85674-X73LF	A	20	6	8	8	6	20

spec ref	*	dr	Terran Huang	2010/07/09	projection	MM	size	A4	scale	1:10
tolerance std	ISO 406 ISO 1102	eng	Narayanan, Aru	2018/10/03			ecn no	ELX-I-31392-1		
TOLERANCES UNLESS OTHERWISE SPECIFIED		chr	-	-				rel level	Released	
surface	3.200	appr	K-Paul Biju	2018/10/04	product family	METRAL			rev	CK
linear	0.X ±0.3 0.XX ±0.13 0.XXX ±0.051	Amphenol FCI				METRAL SIGNAL HEADER			dwg no	85674
angular	0° ±2°	cat. no.				-			Product - Customer Drw	sheet 6 of 10

METRAL P/N	ROW	CONTACT CODE MOD. I					METRAL P/N	ROW	CONTACT CODE MOD. I					METRAL P/N	ROW	CONTACT CODE MOD. I					METRAL P/N	ROW	CONTACT CODE MOD. I					METRAL P/N	ROW	CONTACT CODE MOD. I																					
		1	2	3	4	5			6	1	2	3	4			5	6	1	2	3			4	5	6	1	2			3	4	5	6	1	2	3	4	5	6												
85674-X97	E	4	-	4	4	4	3	85674-X101	E	2	2	2	2	2	1	85674-X105	E	7	8	7	8	7	8	85674-X109	E	2	2	2	2	2	2	85674-X113	E	6	7	6	4	6	4	6	4	6	4	85674-X117	E	-	4	2	4	2	4
-----	D	4	-	4	4	4	3	-----	D	2	2	2	2	2	2	-----	D	7	8	7	8	7	8	-----	D	3	2	2	2	2	2	-----	D	6	7	6	4	6	4	6	4	6	4	-----	D	-	4	2	4	2	4
85674-X97LF	C	4	-	4	4	4	3	85674-X101LF	C	2	1	2	2	2	2	85674-X105LF	C	8	8	8	8	8	8	85674-X109LF	C	4	2	2	2	2	4	85674-X113LF	C	6	7	6	4	6	4	6	4	6	4	85674-X117LF	C	-	4	4	4	4	4
-----	B	4	-	4	4	4	3	-----	B	2	1	2	2	1	2	-----	B	6	8	6	8	6	8	-----	B	2	2	2	2	2	2	-----	B	6	7	6	4	6	4	6	4	6	4	-----	B	-	4	2	4	2	4
-----	A	4	-	4	4	4	3	-----	A	2	2	2	2	1	2	-----	A	6	8	6	8	6	8	-----	A	2	2	2	2	2	2	-----	A	6	7	6	4	6	4	6	4	6	4	-----	A	-	4	2	4	2	4

spec ref	*	dr	Terran Huang	2010/07/09	projection	MM	size	A4	scale	1:10		
tolerance std	TOLERANCES UNLESS OTHERWISE SPECIFIED	eng	Narayanan, Aru	2018/10/03			ecn no	ELX-I-31392-1				
ISO 406		chr	-	-				rel level	Released			
ISO 1102		appr	K-Paul Biju	2018/10/04	product family	METRAL			rev			
surface 3.200	linear	0.X	±0.3	Amphenol FCI	METRAL SIGNAL HEADER			dwg no	85674		rev	CK
		0.XX	±0.13		1 MOD, 5 ROW PRESS-FIT							
		0.XXX	±0.051		cat. no.	-	Product - Customer Drw		sheet 7 of 10			
ISO 1302	angular	0°	±2°									

A

B

C

D

METRAL P/N	ROW	CONTACT CODE MOD. I						METRAL P/N	ROW	CONTACT CODE MOD. I						METRAL P/N	ROW	CONTACT CODE MOD. I						METRAL P/N	ROW	CONTACT CODE MOD. I						METRAL P/N	ROW	CONTACT CODE MOD. I													
		1	2	3	4	5	6			1	2	3	4	5	6			1	2	3	4	5	6			1	2	3	4	5	6			1	2	3	4	5	6	1	2	3	4	5	6		
85674-X121	E	6	6	6	5	6	6	85674-X125	E	1	2	2	2	2	2	85674-X129	E	19	2	2	2	2	2	85674-X133	E	59	7	31	7	59	7	85674-X137	E	2	2	2	2	2	2	85674-X141	E	1	1	1	1	1	1
-----	D	6	6	6	6	6	6	-----	D	1	2	2	2	2	2	-----	D	2	2	2	2	2	2	-----	D	59	7	31	7	59	7	-----	D	2	2	2	2	2	1	-----	D	1	1	3	3	1	1
85674-X121LF	C	6	6	6	6	6	6	85674-X125LF	C	1	2	2	2	2	2	85674-X129LF	C	2	2	2	2	2	2	85674-X133LF	C	59	7	31	7	59	7	85674-X137LF	C	-	-	-	-	-	-	85674-X141LF	C	1	1	3	3	1	1
-----	B	6	6	6	6	6	6	-----	B	1	2	2	2	2	2	-----	B	1	2	2	2	2	2	-----	B	59	7	31	7	59	7	-----	B	2	2	2	2	2	2	-----	B	1	1	1	1	1	1
-----	A	6	6	6	6	6	6	-----	A	1	2	2	2	2	2	-----	A	2	1	2	2	2	2	-----	A	59	7	31	7	59	7	-----	A	2	2	2	2	2	1	-----	A	1	1	1	1	1	1

A

B

C

D

spec ref	*	dr	Terran Huang	2010/07/09	projection		size	A4	scale	1:10	
tolerance std	ISO 406 ISO 1102	eng	Narayanan, Aru	2018/10/03	chr	-	ecn no	ELX-I-31392-1	rel level	Released	
surface	3.200	appr	K-Paul Biju	2018/10/04	product family	METRAL	rel level	Released	dwg no	85674	
ISO 1302	linear	0.X	±0.3	Amphenol FCI	METRAL SIGNAL HEADER					rev	CK
	0.XX	±0.13	1 MOD, 5 ROW PRESS-FIT								
	0.XXX	±0.051	cat. no.		-	Product - Customer Drw	sheet 8 of 10				
	angular	0°	±2°								

A

B

C

D

A

B

C

D

1							2							3							4																					
METRAL P/N	ROW	CONTACT CODE MOD. I						METRAL P/N	ROW	CONTACT CODE MOD. I						METRAL P/N	ROW	CONTACT CODE MOD. I						METRAL P/N	ROW	CONTACT CODE MOD. I																
		1	2	3	4	5	6			1	2	3	4	5	6			1	2	3	4	5	6			1	2	3	4	5	6											
85674-X145	E	3	3	3	3	2	1	85674-X149	E	2	2	2	2	2	2	85674-X153	E	2	2	2	2	2	2	85674-X157	E	3	3	3	3	1	9	3	85674-X161	E	3	3	3	3	3	3		
-----	D	3	3	3	3	2	1	-----	D	2	2	2	2	1	2	-----	D	2	2	2	2	2	2	-----	D	3	3	3	3	1	9	3	-----	D	3	3	3	3	3	3		
-----	C	3	3	3	3	2	1	-----	C	2	2	2	2	1	2	-----	C	2	2	2	2	2	2	-----	C	3	3	3	3	1	9	3	-----	C	1	9	1	9	1	9	3	3
85674-X145LF	B	3	3	3	3	2	1	85674-X149LF	B	2	2	2	2	2	2	85674-X153LF	B	2	2	2	2	2	2	85674-X157LF	B	3	3	3	3	1	9	3	85674-X161LF	B	3	3	3	3	3	3		
-----	A	3	3	3	3	2	1	-----	A	2	2	2	2	2	2	-----	A	2	2	1	2	2	2	-----	A	3	3	3	3	1	9	3	-----	A	3	3	3	3	3	3		

spec ref	*	dr	Terran Huang	2010/07/09	projection	MM	size	A4	scale	1:10						
tolerance std	TOLERANCES UNLESS OTHERWISE SPECIFIED	eng	Narayanan, Aru	2018/10/03			ecn no	ELX-I-31392-1								
ISO 406		chr	-	-				rel level	Released							
ISO 1102		appr	K-Paul Biju	2018/10/04	product family	METRAL			rev							
surface 3.200	linear	Amphenol FCI			METRAL SIGNAL HEADER			85674								
											1 MOD, 5 ROW PRESS-FIT			CK		
ISO 1302	angular										cat. no.					
					sheet 9 of 10											

PRODUCT NUMBER
85674-XYX OR 85674-YYYY
85674-XYLFX OR 85674-YYYYLFX

NOTES:

- FOR DIM A AND B SEE SHEET 2 AND UP.
- BODY MATERIAL: LIQUID CRYSTAL
POLYMER 30 % GLASS.
FLAME RETARDANT ACC. UL 94-V0.
- PIN MATERIAL:
PHOSPHOR BRONZE.
- PLATING ON PRESS-FIT TAIL:
85674-XYX IS SnPb
85674-XYLFX IS SN (LEAD FREE)
PLATING ON CONTACT AREA CONFORMS TO PERFORMANCE LEVEL SHOWN IN TABLE BELOW.
- PRODUCT MARKING:
PART NUMBER DESIGNATION & BATCH I.D.
- ALL PRODUCTS WITH PART NUMBERS SHOWN IN SUBSEQUENT TABLES WILL BE PACKAGED IN TUBES. IF TRAY PACKAGING IS REQUIRED, A SUFFIX "P" WILL BE ADDED TO THE END OF THE PART NUMBER. EXAMPLE: XXXXX-XXXP
- PRODUCT SPECIFICATION GS-12-180
APPLICATION SPECIFICATION BUS-20-073
- AFTER INSERTION INTO CIRCUIT BOARD WITH QUALIFIED TOOL.
- THE PRODUCTS WHERE THE PART NUMBER ENDS IN LF MEET THE EUROPEAN UNION DIRECTIVES AND OTHER COUNTRY REGULATIONS AS DESCRIBED IN GS-22-008.

ALL PRODUCTS EXCEPT THOSE WITH PART NUMBERS CONTAINING (DRAWING NO.)-N1--- OR (DRAWING NO.)-N5--- WILL WITHSTAND EXPOSURE TO 260°C FOR 60 SECONDS IN A CONVECTION, INFAR-RED OR VAPOR PHASE REFLOW OVEN. PART NUMBERS (DRAWING NO.)-N1--- AND (DRAWINGS NO.)-N5--- WILL NOT WITHSTAND REFLOW AND Au CONTACT SURFACE OF THE CONTACTS SHALL BE EXPOSED TO A MAXIMUM 140°C FOR NO LONGER THAN 15 SECONDS IN A WAVE SOLDER APPLICATION.

PLATING IN CONTACT AREA		
DASH NUMBER	PERFORMANCE LEVEL	NOTES
-PYY OR -PYXX	0.25 um GOLD MIN.	-
-N1YY OR -N1YYY	TELCORDIA CO (NXT)	-
-N5YY OR -N5YYY	TELCORDIA UE (NXT)	-
-1YY OR -1YYY	TELCORDIA CO	-
-2YY OR -2YYY	TELECOM CLASS	-
-3YY OR -3YYY	IEC CLASS I	-
-5YY OR -5YYY	TELCORDIA UE	-
-9YY OR -9YYY	TELCORDIA CO	-
-N1YYLF OR -N1YYYLF	TELCORDIA CO (NXT) IEC CLASS I	SEE NOTE 9
-N5YYLF OR -N5YYYLF	TELCORDIA UE (NXT)	SEE NOTE 9
-1YYLF OR -1YYYLF	TELCORDIA CO IEC CLASS I	SEE NOTE 9
-2YYLF OR -2YYYLF	TELECOM CLASS	SEE NOTE 9
-5YYLF OR -5YYYLF	TELCORDIA UE	SEE NOTE 9

spec ref	*	dr	Terran Huang	2010/07/09	projection	MM	size	A4	scale	1:10	
tolerance std	TOLERANCES UNLESS OTHERWISE SPECIFIED	eng	Narayanan, Anu	2018/10/03			ecn no	ELX-I-31392-1			
ISO 406 ISO 1102		chr	-	-			rel level	Released			
surface 3.200		linear	appr	K-Paul Biju	2018/10/04	product family	METRAL				
ISO 1302	angular	Amphenol FCI		METRAL SIGNAL HEADER			dwg no	85674		rev	CK
					1 MOD, 5 ROW PRESS-FIT						
		cat. no.			Product - Customer Drw			sheet 10 of 10			