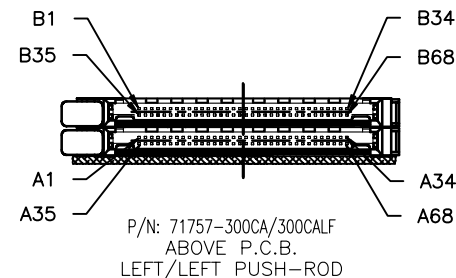
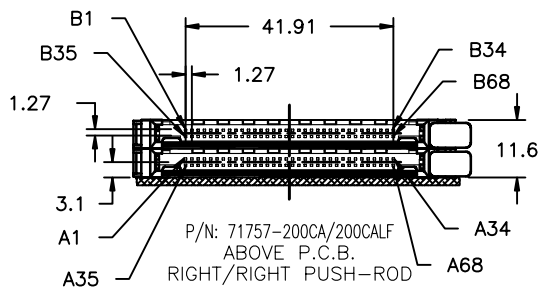
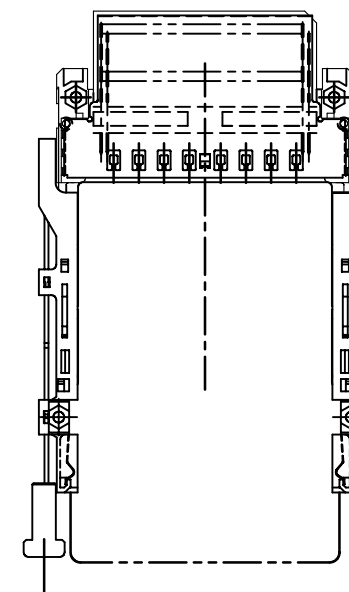
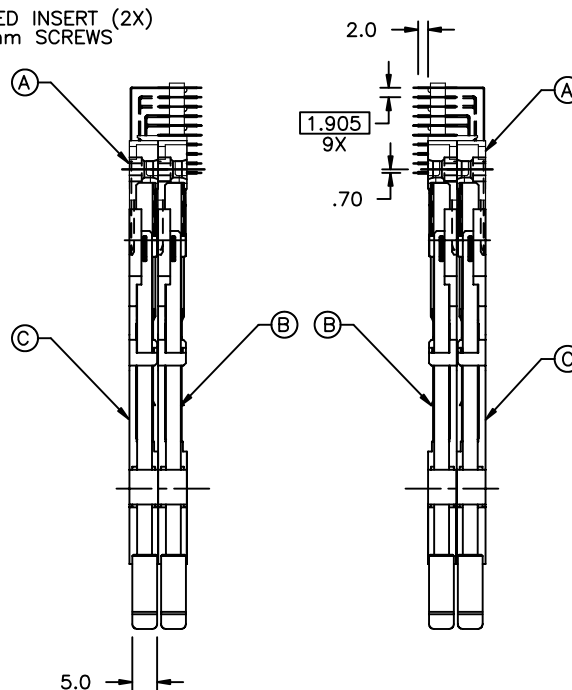
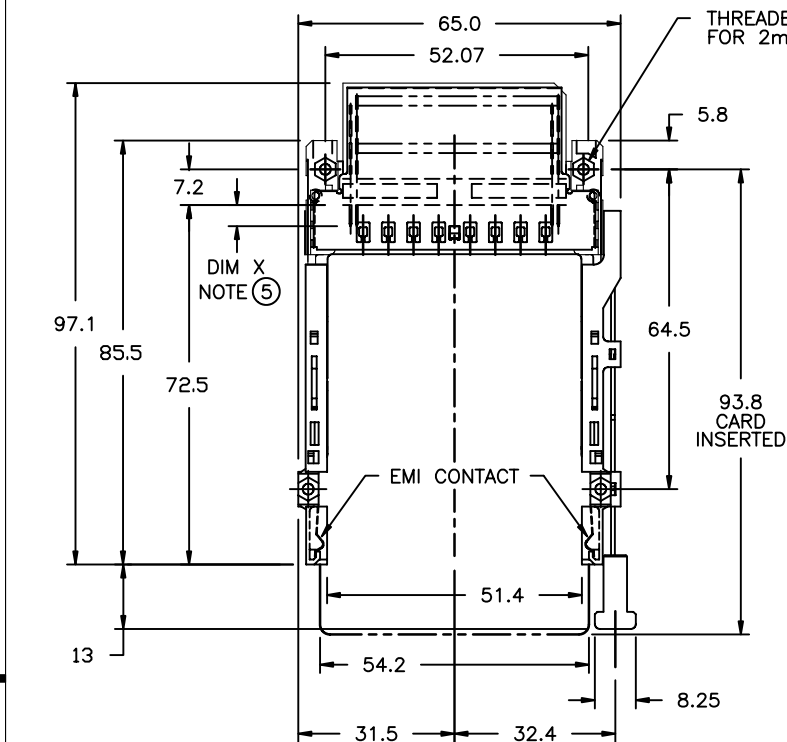




A

FCI

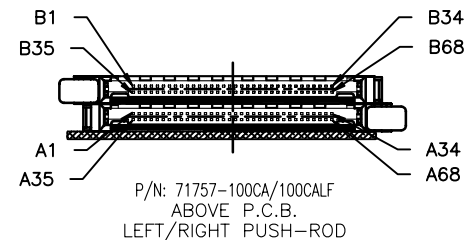
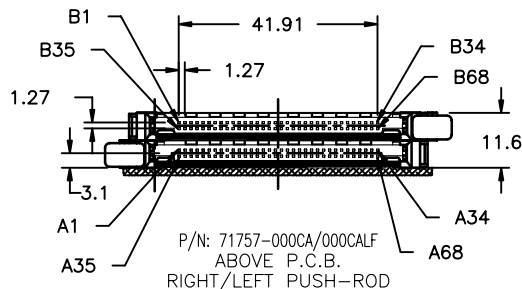
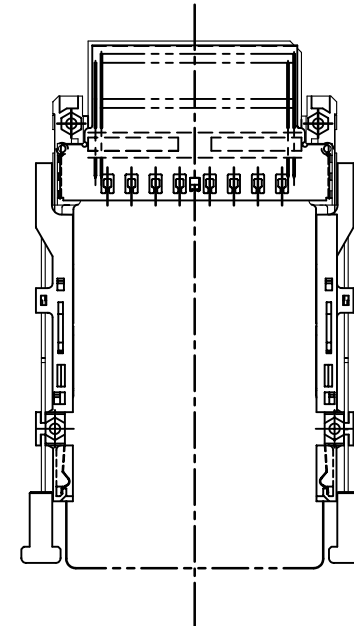
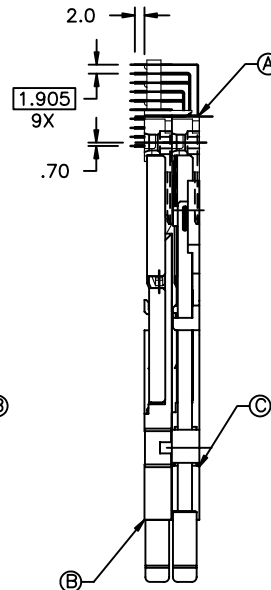
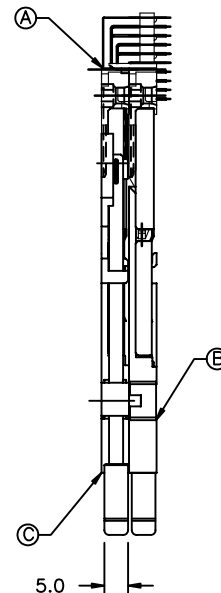
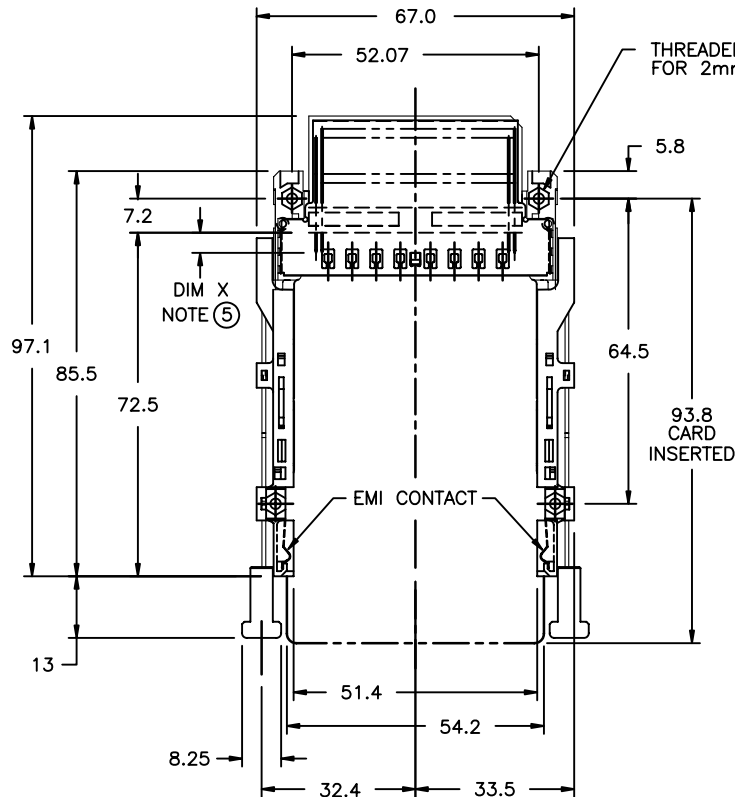
B



PRODUCT NUMBER	DOUBLE - DECK HEADER ①	LOWER EJECT MECHANISM ②	UPPER EJECT MECHANISM ③
71757-200CALF	71257-0000LF	72336-000CA	72336-000CA
71757-300CALF	71257-0000LF	72336-100CA	72336-100CA
71757-200CA	71257-0000	72336-000CA	72336-000CA
71757-300CA	71257-0000	72336-100CA	72336-100CA

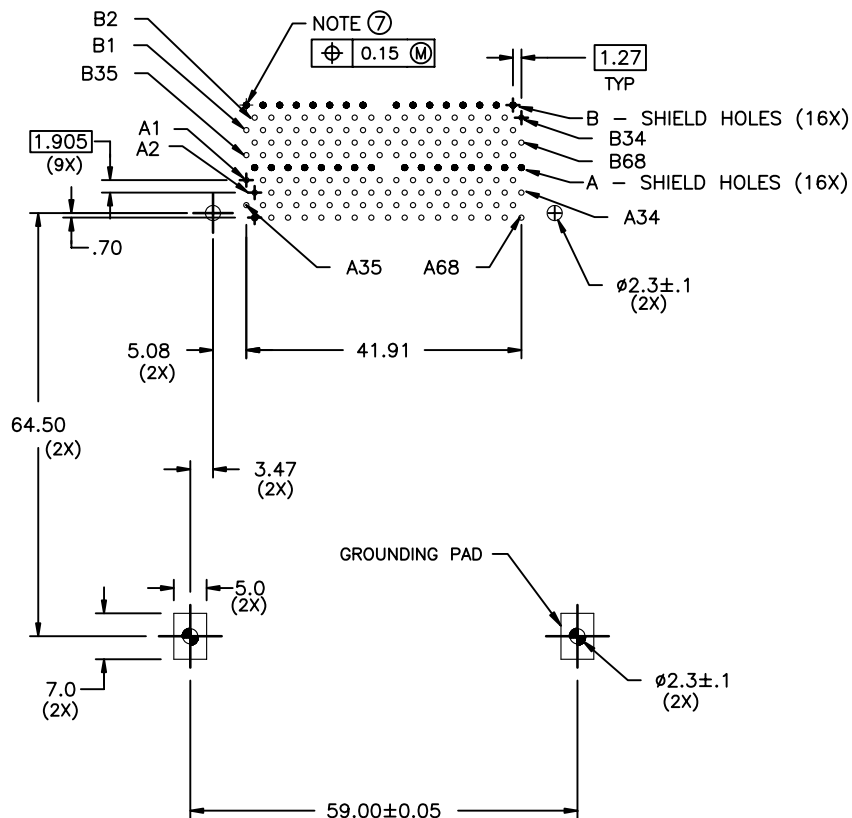
mat'l. code				tolerances unless otherwise specified		CUSTOMER COPY		Electronics FCI	
ltr	ecn no	dr	date		.X±.3	projection		title	www.fciconnect.com
B	V60587	RHG	3/26/96	linear	.XX±.13	MM		R/A CARDBUS DOUBLE DECK ASSEMBLY	
C	V61005	RHG	7/8/96		.XXX±.051	scale		product family	MCS
D	V70389	RHG	3/25/97	angles	0° ±2'	3/4		size	dwg no
E	V71446	RHG	10/7/97	dr	D.SHEAFFER	8/31/95		A4	71757
F	V81800	CGC	10/20/98	enr	D.BRANN	8/31/95			
G	V12164	TFG	8/16/01	chr	D.BRANN	8/31/95			
H	N05-0054	WB	03/01/05	appd	D.BRANN	8/31/95			
sheet	revision	H	H	H					
index	sheet	1	2	3					

B



PRODUCT NUMBER	DOUBLE - DECK HEADER ①	LOWER EJECT MECHANISM ②	UPPER EJECT MECHANISM ③
71757-000CALF	71257-0000LF	72336-100CA	72336-000CA
71757-100CALF	71257-0000LF	72336-000CA	72336-100CA
71757-000CA	71257-0000	72336-100CA	72336-000CA
71757-100CA	71257-0000	72336-000CA	72336-100CA

mat'l. code				tolerances unless otherwise specified		CUSTOMER COPY	7- Electronics FCI www.fciconnect.com		
ltr	ecn no	dr	date	linear	.X±.3		title R/A CARDBUS DOUBLE DECK ASSEMBLY	product family MCS	code -
H					.XX±.13				
					.XXX±.051				
				angles	0° ±2'	projection MM			
				dr	D.SHEAFFER 8/31/98	scale 3/4	A4	size 71757	sheet 2 of
				enr	D.BRANN 8/31/95				
				chr	D.BRANN 8/31/95				
				appd	D.BRANN 8/31/95				
sheet index	revision sheet							cage code	



# NOTES:

- 8mm MIN CARD EJECT.
- EJECT TRAVEL: 9.5mm
- MATERIAL:
  - HEADER ASSY:
    - PLASTIC HOUSING: LCP UL94V-0 BLACK - ABOVE PCB
    - PIN: PHOSPHOR BRONZE
  - EJECT MECHANISM ASSY:
    - PLASTIC GUIDE: POLYPHTHARAMID UL94V-0 BLACK
    - PLASTIC PUSH-ROD BUTTON: POLYPHTHARAMID UL94V-0 BLACK
    - COVER PLATE, EJECT PLATE, LINK ARM, PUSH ROD: STAINLESS STEEL
    - EMI CONTACT: PHOSPHOR BRONZE
- FINISH (PIN)
  - UNDER PLATING: 0.5um Ni
  - CONTACT AREA: 0.1um GOLD OVER
  - 0.5um Pd-Ni
  - SOLDER TAIL(TIN LEAD OPTION): 2.5um Sn-Pb
  - SOLDER TAIL(LEAD FREE OPTION): 2.5um PURE TIN
- DIM "X"
 

4.25±0.1	3.5±0.1	5.0±0.1
OTHERS	36,67	1,17,34,35,51,68
- RECOMMENDED SCREW TORQUE: 1.0 TO 1.5 MAX in-lbs. (1.2-1.7 cm-kgs).  
RECOMMENDED HOLD DOWN: 2mm SCREWS AND NUTS  
SEE 95121 AND 92869 FOR INFORMATION.
- RECOMMENDED DIAMETER IS Ø1.0. FOR PROCESSES USING PASTE REFLOW, HOLE MAY BE AS SMALL AS Ø0.79.
- IF LEAD FREE P.N.THE HOUSING WILL WITHSTAND EXPOSURE TO 260°C PEAK TEMPERATURE FOR 10 SECONDS IN A WAVE SOLDER APPLICATION WITH A 1.00MM MINIMUM THICK CIRCUIT BOARD.
- IF LEAD FREE P/N.THE PRODUCT MEETS EUROPEAN UNION DIRECTIVES AND OTHER COUNTRY REGULATIONS AS DISCRIBLED IN GS-22-008
- LEAD FREE P/N PACKAGING MEETS GS-14-920 SPECIFICATION

mat'l. code				tolerances unless otherwise specified		CUSTOMER COPY	Electronics	
ltr	ecn no	dr	date	linear	.X±.3		FCI	www.fciconnect.com
H				linear	.XX±.13	projection	title	R/A CARDBUS DOUBLE DECK ASSEMBLY
				angles	.XXX±.051	MM	product family	MCS
				dr	D.SHEAFFER 8/31/95	scale	size	dwg no
				enr	D.BRANN 8/31/95	3/4	A4	71757
				chr	D.BRANN 8/31/95			
				appd	D.BRANN 8/31/95			
sheet index	revision sheet							