

# SMT1

## Surface Mount Tactile Switches

Washable



RoHS Compliant

### ■ Features

#### 1. Compatible With Lead-Free, Reflow Soldering

Heat-resistance resin for lead-free soldering.

#### 2. Washable

#### 3. 180° Symmetric Terminal Pin Layout.

#### 4. Anti-Static Electricity

Ground terminal is provided to prevent damage to element caused by static electricity.

#### 5. Metal contact for sharp tactile feel.

### ■ Specifications

Contact plating		Silver plated	Gold plated
Rating	Max.	1VA Max. (50mA max.48VDC max.)	
	Min.	0.5mA 20mVDC	10μA 20mVDC
Initial contact resistance		100mΩ Max. {1.5mA 200μVAC at 1.96N {200gf} force}	
Dielectric strength		250VAC 1 minute	
Insulation resistance		100MΩ min.	(100VDC)
Electrical life		1000,000 operations	
Stroke		0.5±0.3 mm	
Operating force		1.96±0.98N	
Operating temperature range		-25~+70°C	
Storage temperature range		-40~+70°C	

### ■ Part Numbering

SMT

G

1

—

01

E

—

Z

Series code

Contact plating

Structure

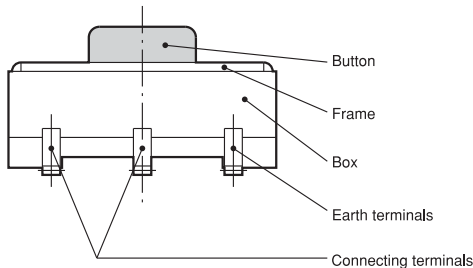
Registration No.

None	Silver plated
G	Gold plated

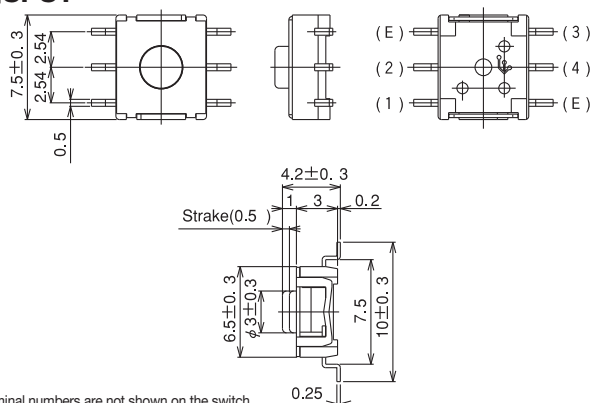
Packaging specifications

None	Stick
E	Emboss taping

### ■ Structure



## ■SPST



Part No.	Switching function		Circuit diagrams
		Push 	
SMT1-01-Z SMTG1-01-Z	OFF	(ON)	
Connecting terminals	—	(2) — (1) (3) — (4)	

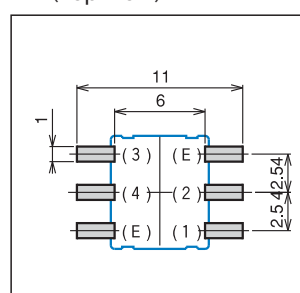
(ON) : Momentary

## ■Table of Part Numbers

Contact plating	Part No.
Silver plated	<b>SMT1-01-Z</b> <b>SMT1-01E-Z</b>
Gold plated	<b>SMTG1-01-Z</b> <b>SMTG1-01E-Z</b>

## ■Pad Layouts

(Top view)



Terminal (E) to be connected to Ground. Terminal (E) is connected to the metal frame.

## ■Soldering Specifications

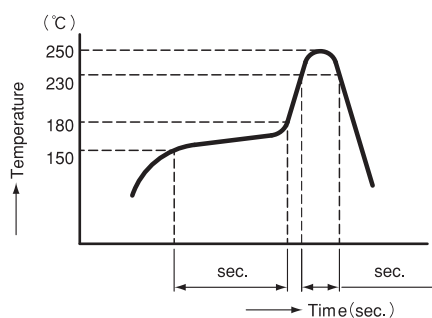
## (1) Manual Soldering

Device : Soldering iron

① 380°C ±10°C; 3±0.5 seconds

## (2) Reflow Soldering

Device : Inline or batch system



Apply reflow soldering only once

## ■Flux Cleaning ..... Refer to P. 229.

## ■Packaging Specifications

Stick specification	Emboss taping specification

Minimum packaging quantity for reel packaging is 1,000pcs per reel.