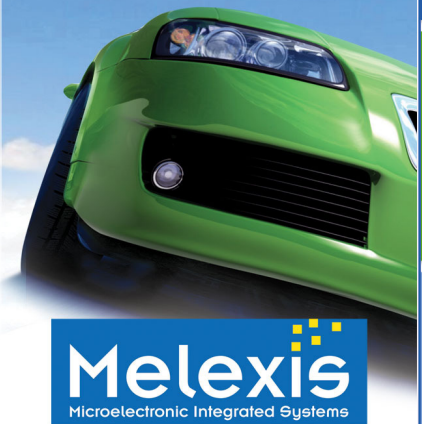


Product Information

Automotive Sensor Interface

MLX90320

MLX90320 interface IC amplifies and temperature compensates resistive Wheatstone bridge type sensing elements. The signal conditioning circuitry includes gain adjustment, offset control and second order temperature compensation of the resistive sensing element. Compensation values are stored in EEPROM. MLX90320 is programmed through a single serial wire (output pin). The user can specify on-chip clamping levels (fault detection bands).

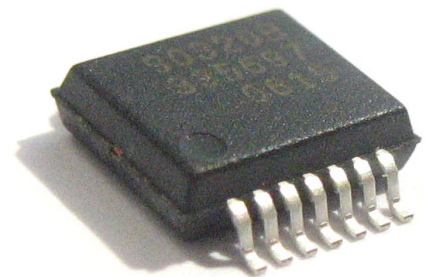


Features

- Cost optimized sensors: single chip automotive sensor conditioning solution
- Dedicated for automotive applications with wide temperature range
- Second order gain and offset correction by programmable coefficient
- External or internal temperature sensor
- Over-voltage protection (no additional protection IC needed)
- Fault detection and programmable clamping levels
- Ratiometric output: 0 to 5V
- Single pin programming (through output pin)
- Fast response time (fully analog signal path)
- SSOP14 package or die form

Applications

- Pressure transducers, strain gauges
- Accelerometers, position sensors, magnetic sensors
- Steering systems (e.g. torque sensors)
- Safety restraints systems (e.g. seat occupant detection)
- Braking systems (e.g. ABS, force)
- Comfort systems (e.g. air conditioning)
- Engine management (e.g. injection)
- Any resistive bridge type sensor



Bus ICs

BLDC Motor
Control ICs

Pressure Sensors

Wireless ICs

Hall Effect ICs
And Sensors

Optoelectronic
Sensors

Sensor Interface ICs

Infrared Sensors

Application Schematics

Very few off-chip components needed.

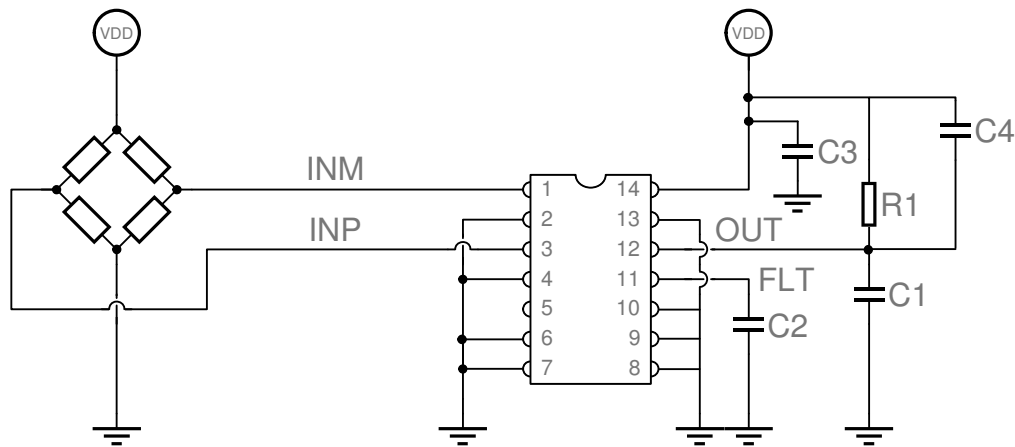


Illustration of a pressure module using Melexis' Sensor Interface IC

For additional information email info@melexis.com or go to our website at: www.melexis.com

Disclaimer:

Devices sold by Melexis are covered by the warranty and patent indemnification provisions appearing in its Term of Sale. Melexis makes no warranty, express, statutory, implied, or by description regarding the information set forth herein or regarding the freedom of the described devices from patent infringement. Melexis reserves the right to change specifications and prices at any time and without notice. Therefore, prior to designing this product into a system, it is necessary to check with Melexis for current information. This product is intended for use in normal commercial applications. Applications requiring extended temperature range, unusual environmental requirements, or high reliability applications, such as military, medical life-support or life-sustaining equipment are specifically not recommended without additional processing by Melexis for each application. The information furnished by Melexis is believed to be correct and accurate. However, Melexis shall not be liable to recipient or any third party for any damages, including but not limited to personal injury, property damage, loss of profits, loss of use, interrupt of business or indirect, special incidental or consequential damages, of any kind, in connection with or arising out of the furnishing, performance or use of the technical data herein. No obligation or liability to recipient or any third party shall arise or flow out of Melexis' rendering of technical or other services. © 2010 Melexis NV. All rights reserved.



We Engineer The Sustainable Future

Melexis
Microelectronic Integrated Systems

Bus ICs

BLDC Motor
Control ICs

Pressure Sensors

Wireless ICs

Hall Effect ICs
And Sensors

Optoelectronic
Sensors

Sensor Interface ICs

Infrared Sensors