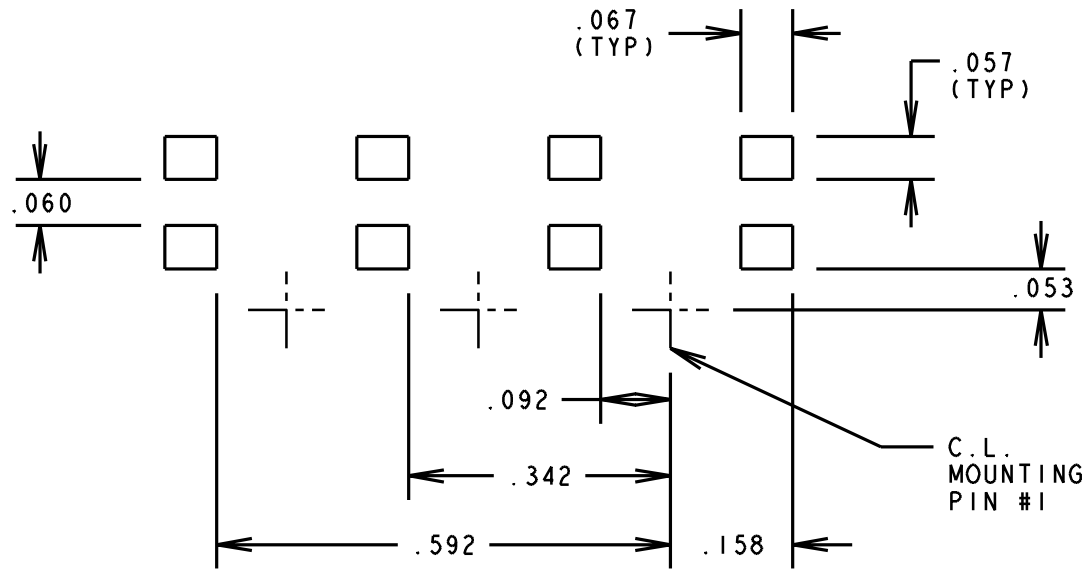
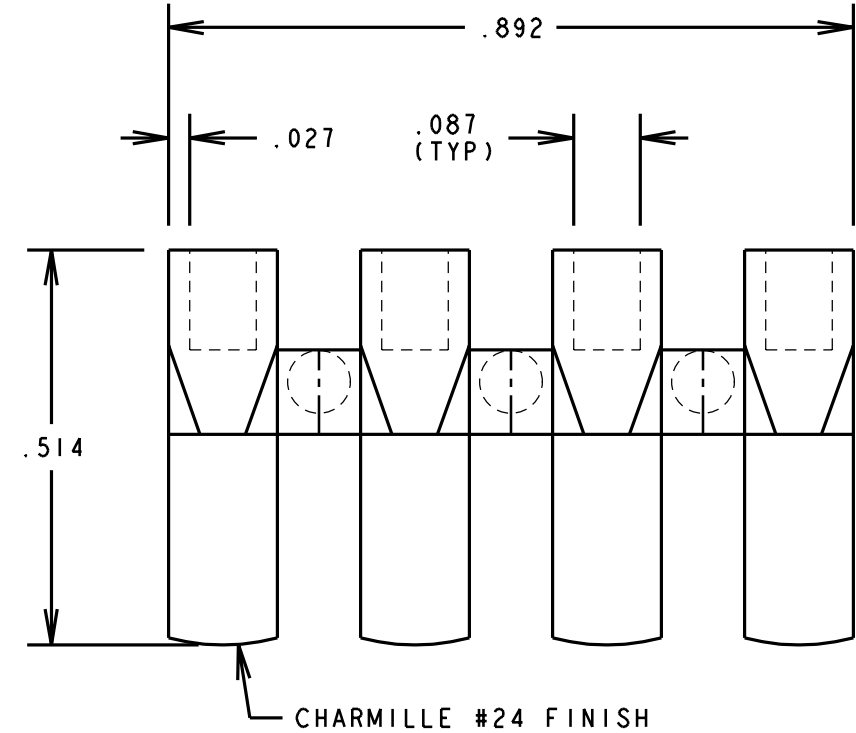
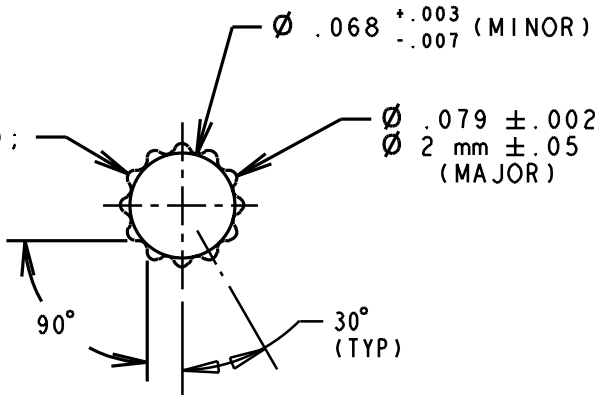


REV.	ECN NO.	REVISIONS	DRN.	CKD.	APP.	DATE
A	—	NEW RELEASE	MC		MC	12-8-93
B	—	DELETED RIBS ON CENTER PEG & DECREASED DIA. TO Ø .068, AND Ø .140 WAS Ø .142.	MC		MC	1-6-94
C	—	PUT RIB DETAIL BACK ON CTR PEG.	MC		MC	1-13-94
D	—	ADDED +.005 -.007 TO DIM .125.	MC		MC	4-26-94
E	—	Ø .079 ±.002 WAS Ø .079 ±.001	MC		MC	5-6-94

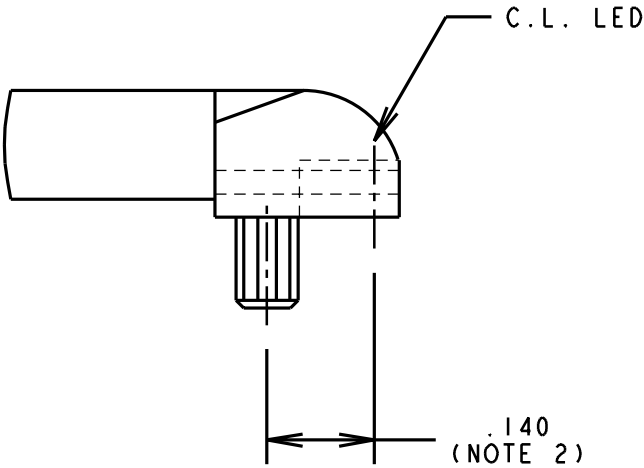
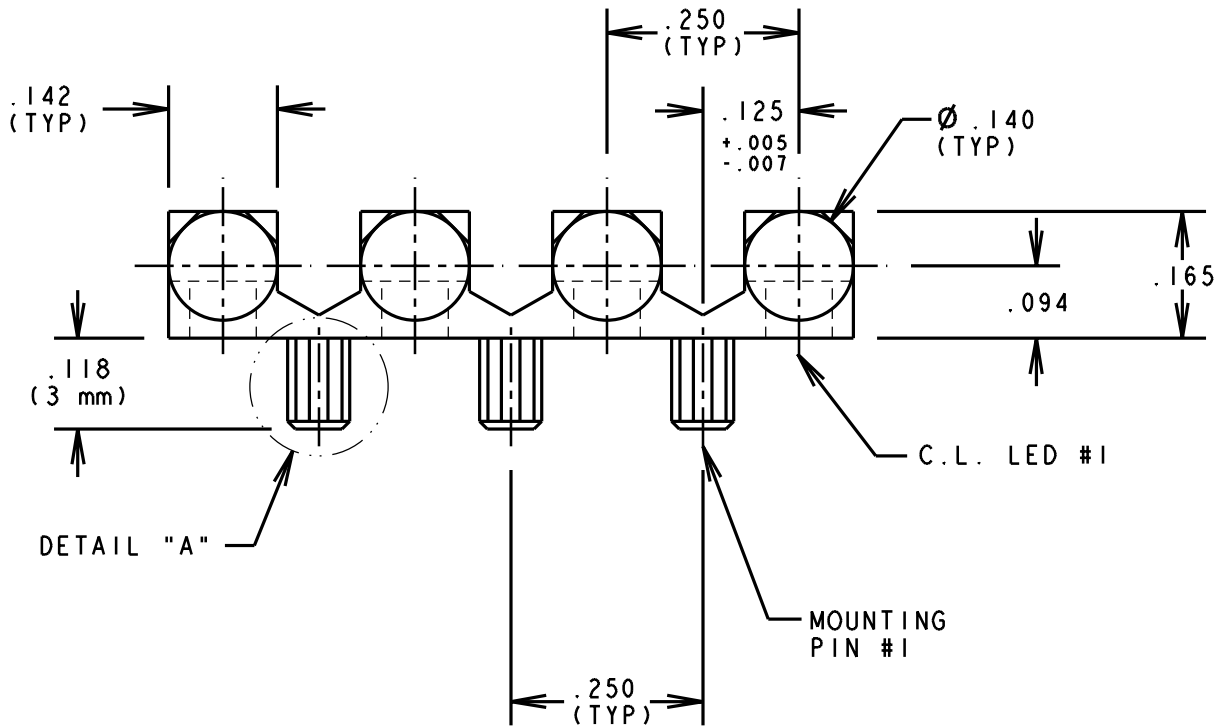


RECOMMENDED SOLDER PAD LAYOUT

R .005 (REF);
(12) PLACES



DETAIL "A"



- NOTES:
1. COMPONENT TO BE MOLDED IN A CLEAR TRANSMISSIVE POLYCARBONATE.
 2. RECOMMENDED POSITION OF LED.
 3. DIALIGHT PART NUMBER: 515-1020

THIS DRAWING AND THE CONTENTS HEREIN ARE CONFIDENTIAL AND THE SOLE PROPERTY OF DIALIGHT. REPRODUCTION OF THIS DRAWING OR CONSTRUCTION OF ANY PARTS WITHIN THIS DRAWING ARE FORBIDDEN WITHOUT THE WRITTEN CONSENT OF DIALIGHT.		
SCALE 4:1	DRAWING NUMBER	REV
ALL DIM'S IN: INCHES	C-15829	E
TOLERANCES: UNLESS OTHERWISE SPECIFIED	TITLE	
FRACTIONS: $\pm 1/64$	LIGHTPIPE ARRAY	
DECIMALS (.XX): $\pm .01$	MATERIAL	
DECIMALS (.XXX): $\pm .005$		
ANGLES: $\pm 1^\circ$		
FINISH:		
FSCM 83330	Dialight	1913 ATLANTIC AVE. MANASQUAN, N.J. 08736
	SHEET OF	FAMILY TABLE: