

TYCO ELECTRONICS PART NUMBER	PREVIOUS PART NUMBER	CABLE TYPE
1050717-1	2001-7141-00	Flexible Cable
1050718-1	2001-7141-02	
1050720-1	2001-7188-00	
1050721-1	2001-7188-02	
1050724-1	2001-7195-00	
1050900-1	2002-7141-00	
1050901-1	2002-7141-02	
1050903-1	2002-7188-02	
1049067-1	SDC, 2001-7195-00, SMA	

Figure 1

1. INTRODUCTION

This instruction sheet contains the assembly procedures for the SMA Straight Cable Connectors shown in Figure 1. These connectors are clamp attachment type connectors that attach to the cable type listed in Figure 1. Figure 1 also contains the previous SMA Straight Cable Connector part numbers.

NOTE

Dimensions on this sheet are in millimeters [with inches in brackets], unless otherwise specified. Figures are not drawn to scale.

The table in Figure 2 references the tool required to apply this connector. The table includes tool description, Tyco Electronics part number, and the corresponding previous part number.

APPLICATION TOOLING		
Tool Description	Tyco Electronics Part Number	Previous Part Number
Center Contact Holder Assembly	1055454-1	2098-5221-10 (T-4578)

Figure 2

Reasons for re-issue can be found in Section 4, REVISION SUMMARY.

2. ASSEMBLY PROCEDURES

2.1. Preparing the Cable (Figure 3)

1. Place the clamp nut onto the cable.
2. Trim the cable jacket, cable braid, and inner conductor to the length shown in Figure 3.
3. Flare the cable braid.

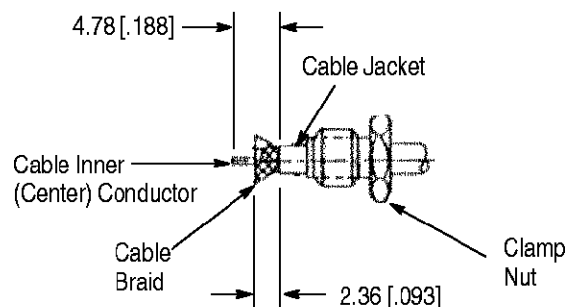
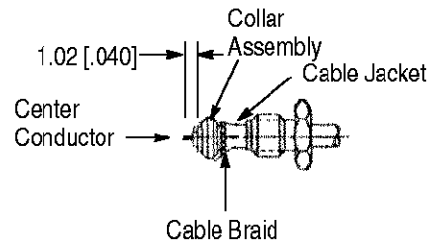


Figure 3

2.2. Assembling the Collar Assembly (Figure 4)

1. Slide the collar assembly over the cable dielectric and under the cable braid and jacket (the center conductor should protrude through the collar assembly approximately 1.02 [.040]).

2. Trim and remove the excess cable braid strands.



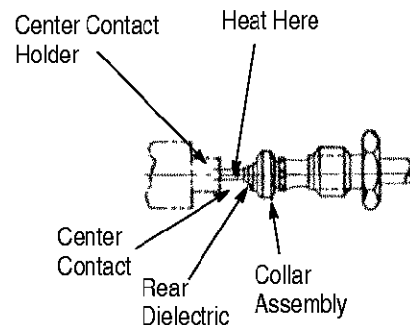
Note: Two Optional Slits (3.05 [0.12] Long) May be Cut in the Cable Jacket (180° Apart) to Ease Assembly.

2.3. Soldering the Center Contact to the Center Conductor (Figure 5)

DANGER

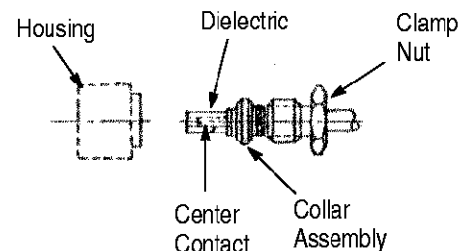
To avoid personnel injury, be sure to follow all local and safety practices when using soldering equipment.

1. Tin the center conductor of the cable.
2. Place the center contact in the center contact holder (see Figure 2). Heat the center contact and push it over the center conductor of the cable so that it butts against the cable dielectric.



2.4. Securing Housing to the Clamp Nut (Figure 6)

1. Assemble the dielectric over the center contact.
2. Slide the clamp nut over the collar assembly and screw into the housing.
3. Torque to 25 inch-pounds.



3. INSPECTION

Adherence to the above steps should yield the tolerances shown in Figure 7.

4. REVISION SUMMARY

Per EC 0990–0281–02:

- Deleted the following obsolete part numbers: 1311539–1, 1051074–1, 1045335–1, and 1051075–1
- Deleted the following superseded part numbers: 1311060–1 and 1050902–1
- Added product and tooling part number cross-references
- Changed title
- Updated format to current corporate requirements

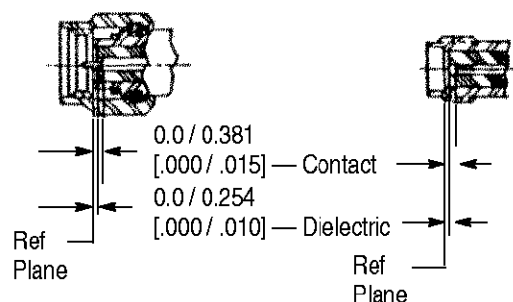


Figure 7