
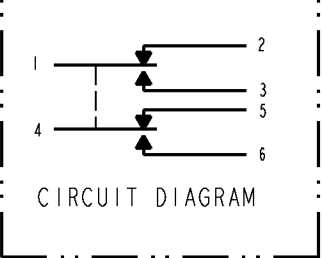
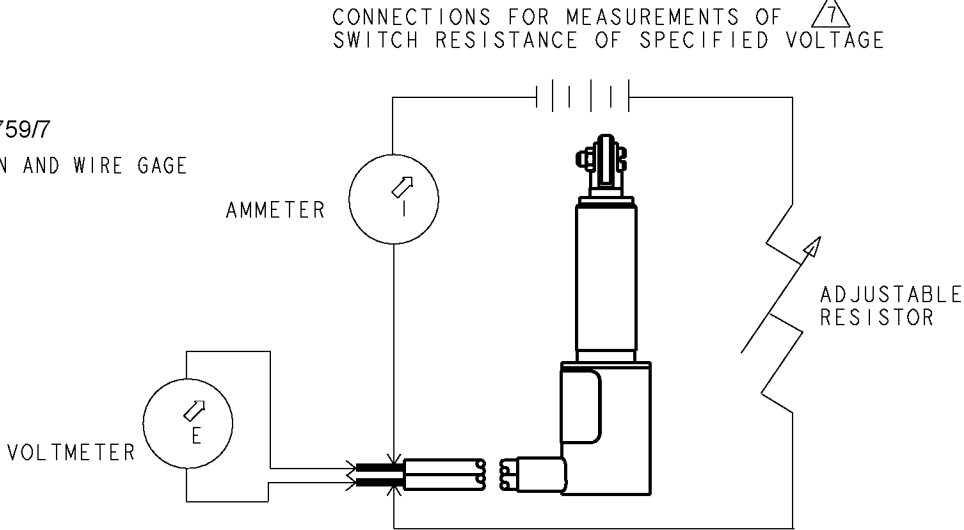
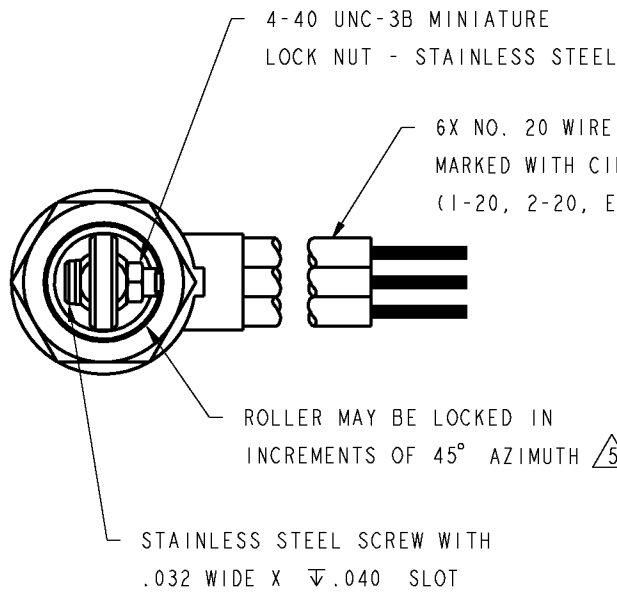


HONEYWELL
PART NUMBER


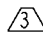
622EN28-6

FAA-PMA 

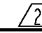
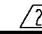
REV	DOCUMENT	CHANGED BY	CHECK
17	0006861	AS 02AUG04	AK

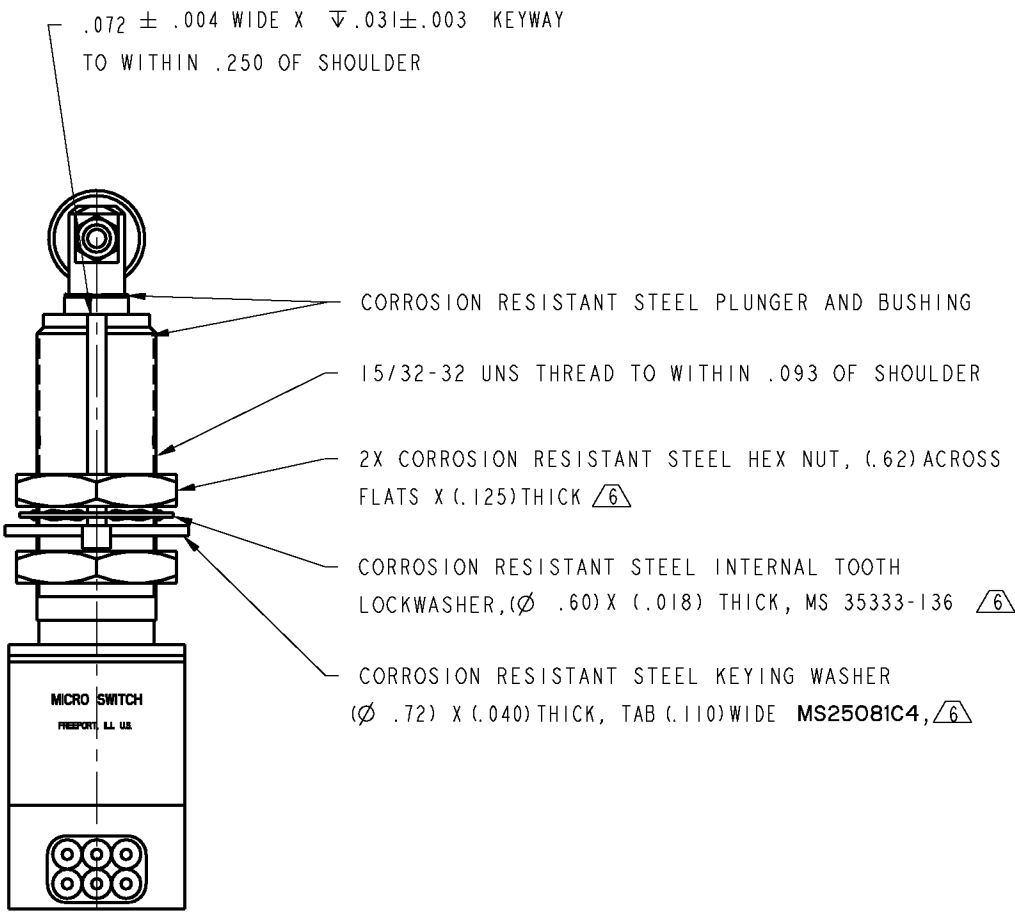
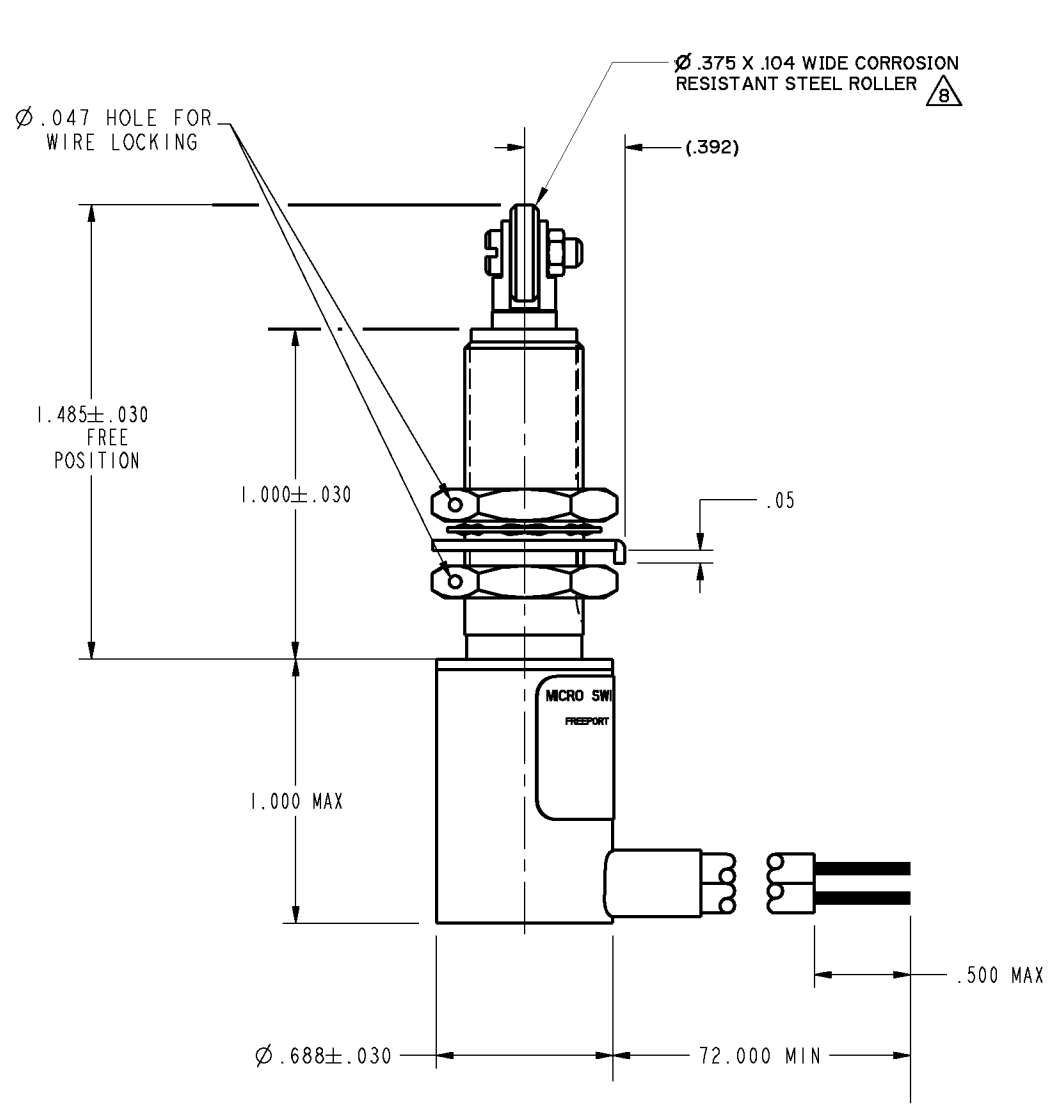



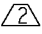
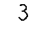
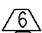
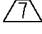

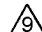
SPECIFICATION DETAILS:	
STANDARD:	CONFORMS TO MS27240-3 (MIL-PRF-8805/43) EXCEPT AS NOTED
CONSTRUCTION:	
ENCLOSURE DESIGN	RESILIENT SEAL PER MIL-PRF-8805, SYMBOL 4
CONTACT MATERIAL & CONFIGURATION	SMOOTH SILVER
CIRCUIT CONFIGURATION	S P D T (2)
TERMINATION	LEADWIRES MIL-W-22759/7
WEIGHT	10.1 OZ MAX
EXTERNAL METALS	300 SERIES STAINLESS STEEL
O-RING MATERIAL	SILICONE ELASTOMER


ELECTRICAL CHARACTERISTICS:		
DIELECTRIC STRENGTH & INSULATION RESISTANCE	DIELECTRIC STRENGTH	INSULATION RESISTANCE
	60 Hz FOR 5 SECONDS	(500 VDC \pm 10%)
	1000 V Rms, 500 μ A (MAX LKG)	1000 megohms MIN
	1000 V Rms, 500 μ A (MAX LKG)	1000 megohms MIN
-BETWEEN TERMINALS AND EXPOSED NON-CURRENT CARRYING METAL -BETWEEN TERMINALS OF MUTUALLY INSULATED CIRCUITS -BETWEEN ALL UNCONNECTED TERMINALS OF THE SAME POLE	1000 V Rms, 500 μ A (MAX LKG)	1000 megohms MIN
	1000 V Rms, 500 μ A (MAX LKG)	1000 megohms MIN
	1000 V Rms, 500 μ A (MAX LKG)	1000 megohms MIN
SWITCH RESISTANCE		
RECOMMENDATION FOR USE IN APPLICATIONS LESS THAN .5 amps AND/OR 12 volts	NOT RECOMMENDED 	

ELECTRICAL RATINGS:		
28 VDC		
LOAD	SEA LEVEL	50,000 FT
RFS	7	7
IND	4	2.5
MOTOR	4	N/A

MECHANICAL CHARACTERISTICS:	
CHARACTERISTICS	
COINCIDENCE OF OPERATING AND RELEASING POINTS	.010 OF PLUNGER TRAVEL
OPERATING FORCE	6-12 LBS
FULL OVERTRAVEL FORCE	30 LBS MAX
RELEASE FORCE	4 LBS MIN
PRETRAVEL	.025 \pm .015
DIFFERENTIAL TRAVEL	.020 MAX
OVERTRAVEL	.125 MIN
MOUNTING TORQUE	15 IN-LBS RECOMMENDED PER MIL-PRF-8805
MOUNTING STRENGTH	30-IN LBS MAX WILL NOT CAUSE SWITCH DAMAGE
ACTUATOR STRENGTH	30 LBS APPLIES IN A DIRECTION TO CAUSE SWITCH ACTUATION
LIFE:	
MECHANICAL LIFE	25,000 MIN PER MIL-PRF-8805/43 
ELECTRICAL LIFE AT FULL RATED LOAD	25,000 MIN PER MIL-PRF-8805/43 
ENVIRONMENTAL:	
TEMPERATURE RANGE	-55° C +85° C
ALTITUDE RANGE	SEA LEVEL TO 50,000 FEET
SHOCK	PER MIL-PRF-8805 SYMBOL M - 100g
VIBRATION	PER MIL-PRF-8805 SYMBOL 2 10-2000 Hz & 15 g peak
MOISTURE RESISTANCE	PER MIL-PRF-8805 (10 DAY TEST)
THERMAL SHOCK	PER MIL-PRF-8805 (5 CYCLE TEST)
SALT SPRAY	PER MIL-PRF-8805 (96 HOUR TEST)



- NOTES
-  CONTACT HONEYWELL - MICRO SWITCH IF ADDITIONAL INFORMATION ON LOW ENERGY
LOADS IS REQUIRED OR FOR HELP WITH SPECIFIC APPLICATIONS
-  LIFE RATINGS ARE PER MIL-PRF-8805 REQUIREMENTS. ACTUAL LIFE EXCEEDS RATED LIFE.
-  CONTACT HONEYWELL - MICRO SWITCH FOR ADDITIONAL DATA
- 3 - CIRCUIT DIAGRAM, CATALOG LISTING, DATE CODE, FED MFG CODE
AND FAA-PMA ARE SHOWN ON NAMEPLATE
- 4 - COINCIDENCE OF OPERATING AND RELEASING POINTS: .010 OF PLUNGER TRAVEL
- 5 - TO ADJUST ROLLER DIRECTION REMOVE LOCK NUT, SCREW AND ROLLER. DEPRESS
PLUNGER UNTIL IT CAN BE ROTATED TO DESIRED POSITION. RETURN PLUNGER
TO FREE POSITION AND REASSEMBLE ROLLER
-  HARDWARE MAY BE PACKAGED UNASSEMBLED PER MIL-PRF-8805
-  MICRO SWITCH RECOMMENDS MEASURING SWITCH RESISTANCE WITH THE 4 - WIRE
(VOLTAGE DROP) METHOD AT FREE POSITION AND FULL OVERTRAVEL. SWITCH RESISTANCE
NOT TO EXCEED 1% OF LOAD IMPEDANCE (1% OF 4 OHMS FOR 28 VDC, 7A \pm .04 OHMS MAX)
-  ROLLER PLUNGER ACTUATOR FOR USE WITH 30° MAX RISE ON CAM OR SLIDE ACTION
-  FOR MANUFACTURING DETAIL SEE ASSEMBLY DRAWING 622EN28-6
FOR FAA-PMA

DESIGN UNITS: INCH		DRAWN	LJK	18MAY99	Honeywell				
TOLERANCES UNLESS NOTED:		CHECK	JAF	18MAY99					
NO PLACE	X	±	0.040	THIS DRAWING COVERS A PROPRIETARY ITEM AND IS THE PROPERTY OF HONEYWELL. THIS DRAWING IS NOT TO BE COPIED OR USED WITHOUT THE PERMISSION OF HONEYWELL.		TITLE			
ONE PLACE	.X	±	0.030						
TWO PLACE	.XX	±	0.015						
THREE PLACE	.XXX	±	0.005						
FOUR PLACE	.XXXX	±	0.0005	INTERPRET PER ASME Y14.5M-1994 OTHER HONEYWELL ENGINEERING STANDARDS MAY APPLY		SIZE	TYPE	DRAWING NAME	REV
ANGLES		±	2			C	I	622EN28-6	17
THIRD ANGLE PROJECTION				RASTER		SCALE	FULL	SHEET 1 OF 1	
									

Mouser Electronics

Authorized Distributor

Click to View Pricing, Inventory, Delivery & Lifecycle Information:

[Honeywell:](#)

[622EN28-6](#)