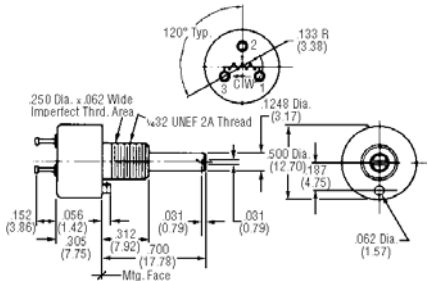


Visit Spectrol's Website at www.spectrol.com

Model 140 Wirewound Single Turn Potentiometer

Anodized aluminum housing with stainless steel 1/8" dia. shaft and gold plated brass terminals. Moisture resistant. **Power Rating at 40°C:** 2-watt. **Resistance Tolerance:** 5%. **Linearity Tolerance:** 1%. **Operating Temperature:** -55°C to +125°C. 0.500"D x 0.305"L. **Rotational Life:** 500,000 turns. **Weight:** 0.1 oz.

Stock No.	Mfr.'s Type	Ohm Value	EACH				
			1-9	10-24	25-49	50-99	100-249
970-1700	140-0-0-102	1000	37.81	35.45	34.37	32.88	32.41
970-1705	140-0-0-502	5000	37.81	35.45	34.37	32.88	32.41
970-1710	140-0-0-103	10 K	37.31	34.98	33.92	32.44	31.99



Model 148 Conductive Plastic Single Turn Panel Control Potentiometer

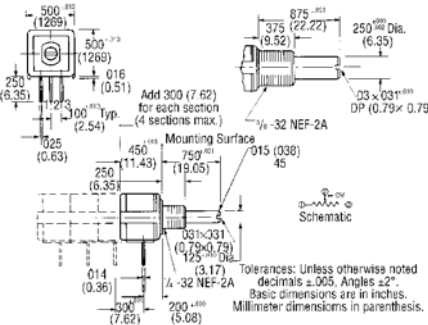
Plastic housing with zinc plated Zemack bushing and nickel plated brass shaft. Conductive plastic element. Plated PC pin terminals for solderability. Moisture resistant. **Power Rating at 70°C:** 0.7-watt. **Resistance Tolerance:** 20%. **Linearity Tolerance:** 5%. **Operating Temperature:** -20°C to +125°C. 1/2" sq. body. **Rotational Life:** 100,000 turns. **Weight:** 0.2 oz.

Stock No.	Mfr.'s Type	Ohm Value	Shaft Dia. (In.)	EACH				
				1-9	10-24	25-49	50-99	100-249
970-1021	148-11-102	1000	1/8	8.90	8.27	7.94	7.59	7.49
970-1026	148-11-502	5000	1/8	8.90	8.27	7.94	7.59	7.49
970-1031	148-11-103	10 K	1/8	8.90	8.27	7.94	7.59	7.49
970-1036	148-11-104	100 K	1/8	8.82	8.27	7.94	7.59	7.49
970-1041	148-11-502	5000	1/4	8.82	8.27	7.94	7.59	7.49
970-1047	148-71103	10 K	1/4	10.70	9.58	8.79	8.33	7.89
970-1052	148-71104	100 K	1/4	10.70	9.58	8.79	8.33	7.89

Model 149 Cermet Single Turn Panel Control Potentiometer

Plastic housing with zinc plated Zemack bushing and nickel plated brass shaft. Cermet element. Plated PC pin terminals for solderability. Moisture resistant. **Power Rating at 85°C:** 1-watt. **Resistance Tolerance:** 10%. **Linearity Tolerance:** 5%. **Operating Temperature:** -20°C to +150°C. 1/2" sq. body. **Rotational Life:** 50,000 turns. **Weight:** 0.2 oz.

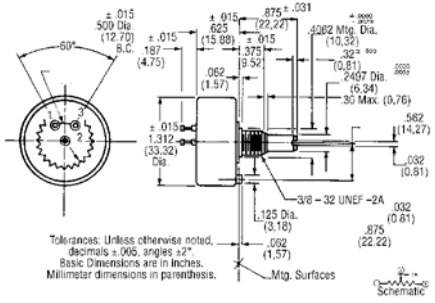
Stock No.	Mfr.'s Type	Ohm Value	Shaft Dia. (In.)	EACH				
				1-9	10-24	25-49	50-99	100-249
970-1756	149-11102	1000	1/8	5.36	4.97	4.77	4.57	4.50
970-1761	149-11502	5000	1/8	5.36	4.97	4.77	4.57	4.50
970-1766	149-11103	10 K	1/8	5.36	4.97	4.77	4.57	4.50
970-1771	149-11503	50 K	1/8	5.36	4.97	4.77	4.57	4.50
970-1775	149-11102	1000	1/4	7.63	6.72	5.83	4.92	4.59
970-1781	149-11502	5000	1/4	5.36	4.97	4.77	4.57	4.50
970-1786	149-11103	10 K	1/4	5.36	4.97	4.77	4.57	4.50
970-1791	149-11104	100 K	1/4	5.36	4.97	4.77	4.57	4.50



Model 132 Wirewound Single Turn Potentiometer

Thermo plastic housing with nickel plated brass bushing and 1/4" dia. stainless steel shaft. Solderable brass terminals. Wirewound element. Moisture resistant. **Power Rating at 40°C:** 2.75-watt. **Resistance Tolerance:** 3%. **Linearity Tolerance:** 0.5%. **Operating Temperature:** -55°C to +125°C. 1.312"D x 0.625"L. **Rotational Life:** 2,000,000 turns. **Weight:** 1.0 oz.

Stock No.	Mfr.'s Type	Ohm Value	Rotation	EACH				
				1-9	10-24	25-49	50-99	100-249
970-1665	132-0-0-102	1000	Continuous	21.28	19.95	19.34	18.50	18.24
970-1670	132-0-0-202	2000	Continuous	21.28	19.95	19.34	18.50	18.24
970-1675	132-0-0-502	5000	Continuous	21.63	20.28	19.66	18.81	18.54
970-1680	132-0-0-103	10 K	Continuous	21.28	19.95	19.34	18.50	18.24
970-1685	132-2-0-102	1000	2 stops	21.63	20.28	19.66	18.81	18.54
970-1690	132-2-0-502	5000	2 stops	31.35	29.39	28.49	27.26	26.87
970-1693	132-2-0-103	10 K	2 stops	27.58	25.07	22.99	21.21	20.28



Model 138 Conductive Plastic Single Turn Potentiometer

Thermo plastic housing with nickel plated brass bushing and 1/4" dia. stainless steel shaft. Solderable brass terminals. Conductive plastic element. Moisture resistant. **Power Rating at 40°C:** 2-watt. **Resistance Tolerance:** 10%. **Linearity Tolerance:** 0.5%. **Operating Temperature:** -55°C to +125°C. 1.312"D x 0.625"L. **Rotational Life:** 2,000,000 turns. **Weight:** 1.0 oz.

Stock No.	Mfr.'s Type	Ohm Value	Rotation	EACH				
				1-9	10-24	25-49	50-99	100-249
970-1695	138-0-0-102	1000	Continuous	22.34	20.95	20.32	19.43	19.16
970-1694	138-0-0-502	5000	Continuous	22.34	20.95	20.32	19.43	19.16
970-1696	138-0-0-103	10 K	Continuous	22.34	20.95	20.32	19.43	19.16
970-1697	138-2-0-102	1000	2 stops	17.69	16.59	16.09	15.39	15.17
970-1698	138-2-0-502	5000	2 stops	22.34	20.95	20.32	19.43	19.16
970-1699	138-2-0-103	10 K	2 stops	22.35	20.95	20.32	19.43	19.16

