



SAW Components

Data Sheet B3772

Data Sheet

An abstract, high-tech graphic. The word "EPCOS" is rendered in large, three-dimensional, glowing white letters that appear to be floating or emerging from a dark, textured background. Behind the letters, a faint, stylized globe is visible, along with abstract patterns that suggest circuitry or data flow. The overall aesthetic is modern and technological.



SAW Components

B3772

Low-loss Filter

902,875 MHz

Data Sheet

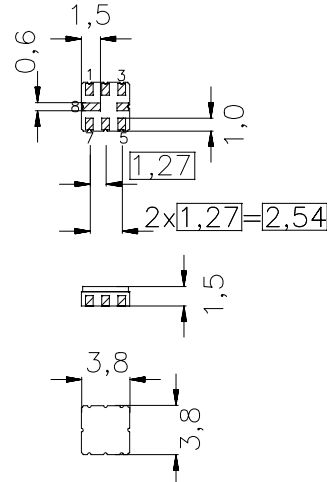
Features

- RF low-loss filter for remote control receivers
- Package for **Surface Mounted Technology (SMT)**
- Balanced and unbalanced operation possible
- Passivation layer: Protec
- AEC-Q200 qualified component family

Terminals

- Ni, gold plated

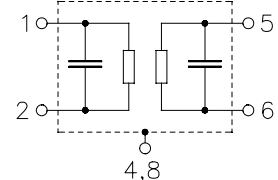
Ceramic package **QCC8B**



typ. dimensions in mm, approx. weight 0,07 g

Pin configuration¹⁾

- 1 Input (recommended) or Input Ground
- 2 Input Ground (recommended) or Input
- 5 Output (recommended) or Output Ground
- 6 Output Ground (recommended) or Output
- 4,8 Case - Ground
- 3,7 to be grounded



Type	Ordering code	Marking and package according to	Packing according to
B3772	B39901-B3772-Z810	C61157-A7-A46	F61074-V8167-Z000

Electrostatic Sensitive Device (ESD)

Maximum ratings

Operable temperature range	T_A	-45/+120	°C	
Storage temperature range	T_{stg}	-45/+120	°C	
DC voltage	V_{DC}	6	V	
Source power	P_S	0	dBm	source impedance 50 Ω

¹⁾ The recommended pin configuration usually offers best suppression of electrical crosstalk. The filter characteristics refer to this configuration.



SAW Components

B3772

Low-loss Filter

902,875 MHz

Data Sheet

Characteristics

Reference temperature:

$$T_A = -40 \dots +95^\circ \text{C}$$

Terminating source impedance:

$$Z_S = 50 \, \Omega \text{ and matching network}$$

Terminating load impedance:

$$Z_L = 50 \, \Omega \text{ and matching network}$$

		min.	typ.	max.	
Center frequency	f_C	—	902,875	—	MHz
(center frequency between 3 dB points)					
Minimum insertion attenuation	α_{\min}				
including loss in matching elements		—	3,0	3,7	dB
excluding loss in matching elements		—	2,5	3,2	dB
Pass band (relative to α_{\min})					
902,25 ... 903,50 MHz		—	1,3	2,0	dB
902,10 ... 903,65 MHz		—	1,3	3,0	dB
Filter bandwidth	$\alpha_{\text{rel}} \leq 3 \text{ dB}$	2,06	2,18	2,30	MHz
Relative attenuation (relative to α_{\min})	α_{rel}				
10,00 ... 884,00 MHz		55	59	—	dB
884,00 ... 892,00 MHz		50	54	—	dB
892,00 ... 900,00 MHz		25	28	—	dB
905,30 ... 915,00 MHz		20	23	—	dB
915,00 ... 924,00 MHz		40	44	—	dB
924,00 ... 1000,00 MHz		55	59	—	dB
1000,00 ... 2500,00 MHz		52	56	—	dB
Impedance for pass band matching ²⁾					
Input: $Z_{\text{IN}} = R_{\text{IN}} \parallel C_{\text{IN}}$		—	410 \parallel 1,1	—	$\Omega \parallel \text{pF}$
Output: $Z_{\text{OUT}} = R_{\text{OUT}} \parallel C_{\text{OUT}}$		—	410 \parallel 1,1	—	$\Omega \parallel \text{pF}$

²⁾ Impedance for passband matching bases on an ideal, perfect matching of the SAW filter to source- and to load impedance (here 50 Ohm). After the SAW filter is removed and input impedance into the input matching / output matching network is calculated.

The conjugate complex value of these characteristic impedances are the input and output impedances for flat passband. For more details, we refer to EPCOS application note #4.



SAW Components

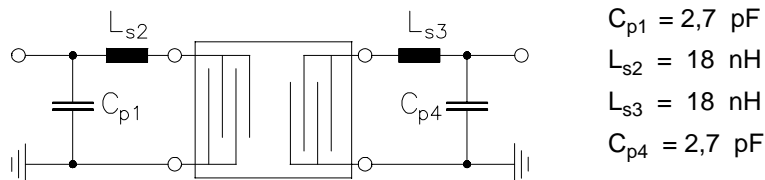
B3772

Low-loss Filter

902,875 MHz

Data Sheet

Matching network to 50 Ω (element values depend on pcb layout and equivalent circuit)



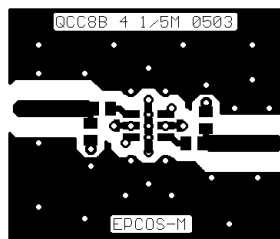
Minimising the crosstalk

For a good ultimate rejection a low crosstalk is necessary. Low crosstalk can be realised with a good RF layout. The major crosstalk mechanism is caused by the "ground-loop" problem.

Grounding loops are created if input-and output transducer GND are connected on the top-side of the PCB and fed to the system grounding plane by a common via hole. To avoid the common ground path, the ground pin of the input- and output transducer are fed to the system ground plane (bottom PCB plane) by their own via hole. The transducers' grounding pins should be isolated from the upper grounding plane.

A common GND inductivity of 0.5nH degrades the ultimate rejection (crosstalk) by 20dB.

The optimised PCB layout, including matching network for transformation to 50 Ohm, is shown here. In this PCB layout the grounding loops are minimised to realise good ultimate rejection.



Optimised PCB layout for SAW filters in QCC8B package, pinning 1,5 (top side, scale 1:1)

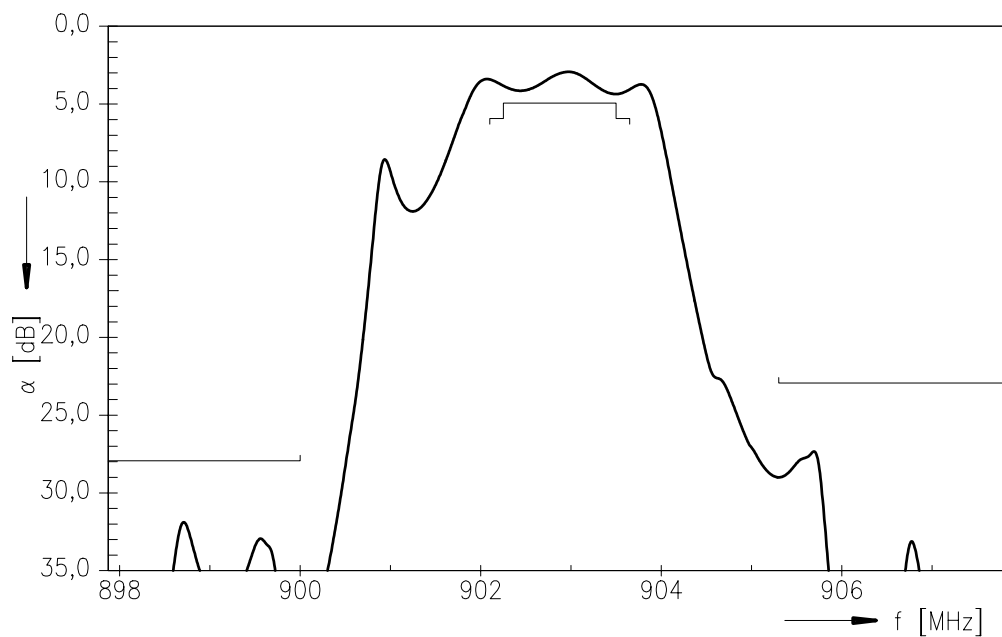
The bottom side is a copper plane (system ground area). The input and output grounding pins are isolated and connected to the common ground by separated via holes.

For good contact of the upper grounding area with the lower side it is necessary to place enough via holes.

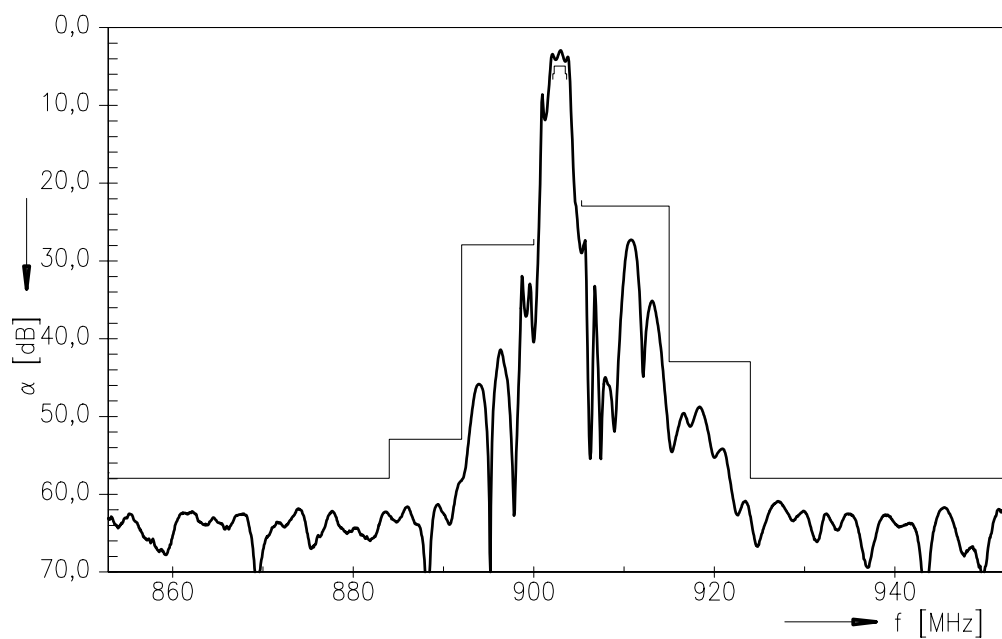


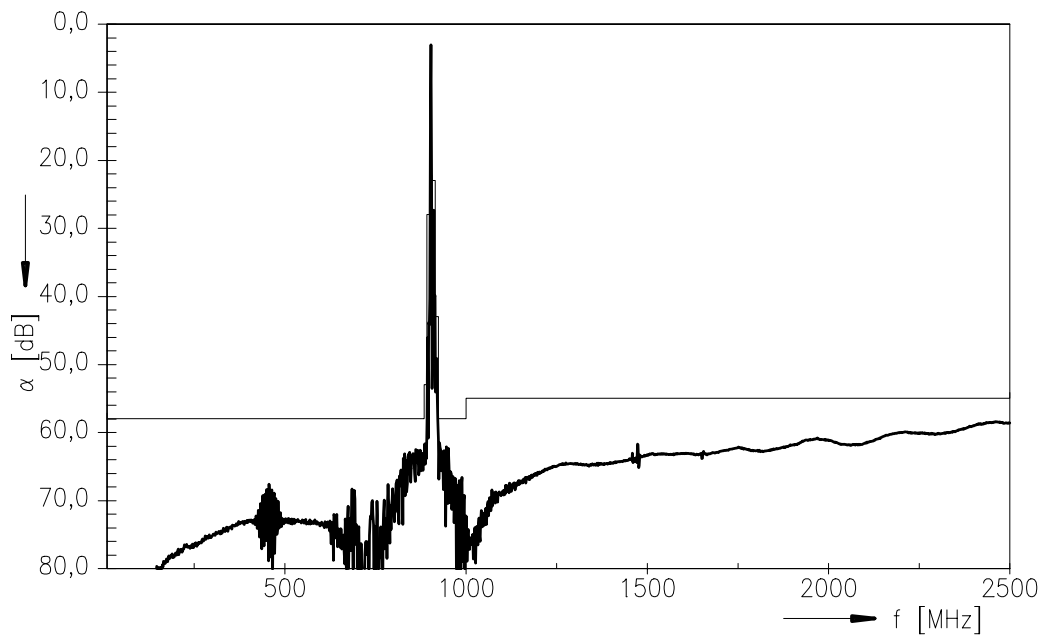
Data Sheet

Frequency response



Frequency response (wideband)



**SAW Components****B3772****Low-loss Filter****902,875 MHz****Data Sheet****Frequency response (ultimate rejection)****Published by EPCOS AG****Surface Acoustic Wave Components Division, SAW CE AE PD****P.O. Box 80 17 09, D-81617 München**

© EPCOS AG 2005. All Rights Reserved. Reproduction, publication and dissemination of this brochure and the information contained therein without EPCOS' prior express consent is prohibited.

The information contained in this brochure describes the type of component and shall not be considered as guaranteed characteristics. Purchase orders are subject to the General Conditions for the Supply of Products and Services of the Electrical and Electronics Industry recommended by the ZVEI (German Electrical and Electronic Manufacturers' Association), unless otherwise agreed.

This brochure replaces the previous edition.

For questions on technology, prices and delivery please contact the Sales Offices of EPCOS AG or the international Representatives.

Due to technical requirements components may contain dangerous substances. For information on the type in question please also contact one of our Sales Offices.

Mouser Electronics

Authorized Distributor

Click to View Pricing, Inventory, Delivery & Lifecycle Information:

[EPCOS:](#)

[B39901B3772Z810](#)