

4

3

2

1

THIS DRAWING IS UNPUBLISHED.

RELEASED FOR PUBLICATION

© COPYRIGHT

ALL RIGHTS RESERVED.

LOC

DIST


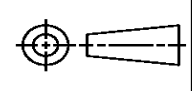
REVISIONS

P	LTR	DESCRIPTION	DATE	DWN	APVD
	A1	ECR-14-002794	01APR2014	GK	HMR



REPLACED BY OCEAN STYLE APPLICATOR PART
NUMBER 2150203-6

FOR REPLACEMENT PARTS FOR APPLICATOR 1911247
REFER TO ADDITIONAL PAGE(S). SPARE PARTS KIT (IF LISTED)
WILL REMAIN AVAILABLE.

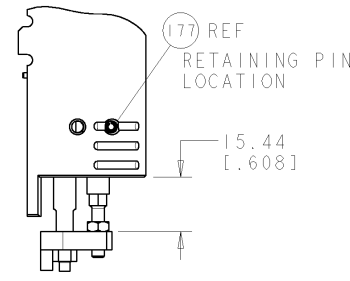
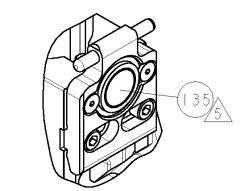
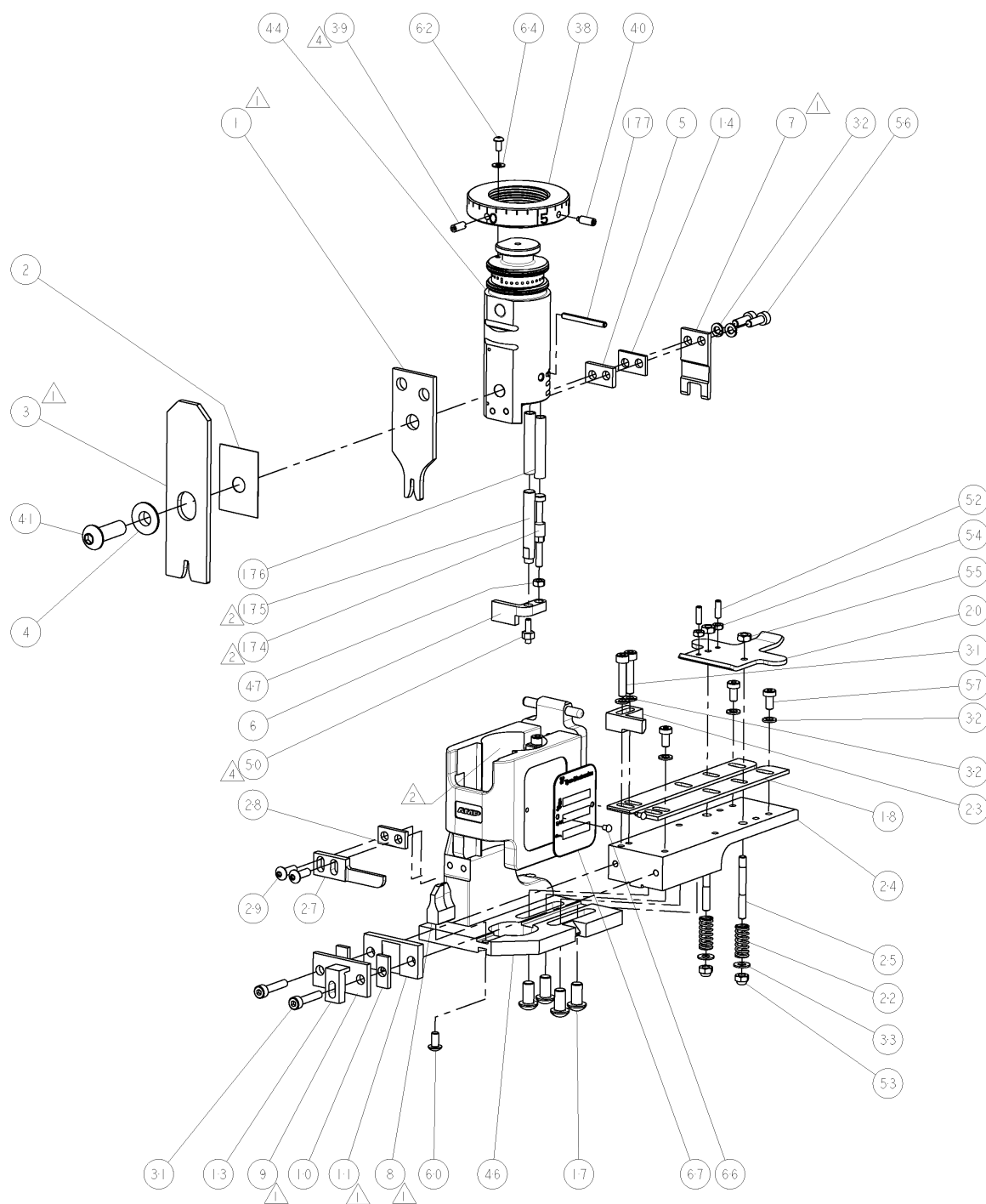
THE REPLACEMENT OCEAN STYLE APPLICATOR HAS THE
SAME TERMINATOR/PRESS INTERFACE AS APPLICATOR
1911247

THIS DRAWING IS A CONTROLLED DOCUMENT.		DWN GOPALAKRISHNA HV		 TE Connectivity			
DIMENSIONS:		CHK RAGHAVENDRA					
		APVD RAGHAVENDRA		NAME END FEED SYSTEM III APPLICATOR			
		PRODUCT SPEC					
		APPLICATION SPEC					
MATERIAL		WEIGHT		SIZE A3	CAGE CODE	DRAWING NO C- 1911247	RESTRICTED TO
FINISH		CUSTOMER DRAWING		SCALE		SHEET 1 OF 2	REV A1

FEED FINGER 1901697-1	SET UP GAGE 1901068-1	LOC A	DIST 66	REVISIONS					
		P	LTR	DESCRIPTION		DATE	OWN	APVD	
			A	RELEASED		21AUG2008	MEH	TE	

TERMINAL DATA: TE TERMINAL		TYCO ELECTRONICS CRIMP SPEC	
TERMINAL NAME: FASTON CONNECTOR .110 SR. REC. CONTACT			
WIRE STRIP LENGTH .122-.154 IN [3.10-3.90mm]		INSULATION DIAMETER RANGE .078-.118 IN [2.00-3.00mm]	
TERMINAL APPL SPEC	 114-20109	-	-
TERMINALS APPLIED			
160484	160415	160424	160528
160533	160534	160555	-

- ① RECOMMENDED SPARE PARTS.
- ② GREASE BEARING SURFACES LIGHTLY.
3. LUBRICATE DAILY PER THE APPLICATOR INSTRUCTION SHEET SUPPLIED WITH THE APPLICATOR.
- ④ APPLY P/N 1-23419-5 LOCTITE® TO THREADS.
- ⑤ APPLICATOR SPECIFIC DATA TO BE ENTERED INTO BLANK MEMORY CHIP AT ASSEMBLY.



-	1	1	1-993111-6	PIN, SLOTTED SPRING 3.0 X 30.0	177
-	2	2	3-22280-7	SPRING, COMPRESSION	176
-	1	1	1752353-1	GUIDE PIN,HOLDDOWN	175
-	1	1	1901680-1	GUIDE PIN,HOLDDOWN	174
REF	REF	REF	SEE TABLE	MEMORY CHIP, PROGRAMMED	135
-	1	1	1633565-2	DOCUMENTATION PACKAGE SIII	71
-	1	1	1901048-1	TAG,IDENTIFICATION	67
-	2	2	21017-1	SCREW, DRIVE	66
-	1	1	18028-1	WASHER, FLAT, REG M3	64
-	1	1	1655785-9	SCR, BTN SKT HD CAP (M3 X 6)	62
-	1	1	1655785-1	SCR, BTN SKT HD CAP (M4 X 8)	60
-	3	3	1655783-2	SCR, CAP, SOC HD, LOW HEAD, M4 X 8	57
-	2	2	2-1655316-0	SCR, SKT HD CAP, M4 X 12.0	56
-	2	2	18030-2	NUT, HEX, REG M4	55
-	2	2	18030-1	NUT, HEX, REG M3	54
-	2	2	986965-1	NUT, LOCK, HEX, TORQUE (M4)	53
-	2	2	2-18032-2	SCR, SET, FLT POINT M3 X 10.0	52
-	1	1	1976055-9	STANDOFF, HOLD-DOWN	50
-	1	1	1-18030-0	NUT, HEX, REG M3.5	47
-	1	1	1752320-1	EF SYSTEM III APPLICATOR	46
-	1	1	1752308-1	RAM	44
-	1	1	2-1655785-3	SCR, BTN SKT HD CAP (M8 X 25)	41
-	1	1	993002-4	SCREW,SET,SFT TIP	40
-	1	1	1962043-1	PLUNGER,BALL,METRIC	39
-	1	1	1752309-1	RING,INSULATION CRIMP	38
-	2	2	18028-2	WASHER, FLAT, REG M4	33
-	7	7	18026-2	WASHER, SPRG LOCK, REG M4	32
-	4	4	2-1655316-6	SCR, SKT HD CAP, M4 X 20.0	31
-	2	2	1655785-2	SCR, BTN SKT HD CAP (M4 X 12)	29
-	1	1	1-690451-8	SPACER, STRIPPER	28
-	1	1	240639-1	STRIPPER (MACHINING)	27
-	2	2	1320906-1	STUD, THREADED	25
-	1	1	1752371-1	PLATE, STRIP GUIDE	24
-	1	1	240825-7	PLATE, STRIP HOLD DOWN	23
-	2	2	4-22281-1	SPRING, DRAG	22
-	1	1	1752373-1	DRAG	20
-	2	2	1901259-4	GUIDE, LOWER STRIP	18
-	4	4	1655785-5	SCR, BTN SKT HD CAP (M6 X 12)	17
-	1	1	3-240641-6	SPACER	14
-	1	1	1752360-1	SPACER,HOLD-DOWN	13
-	1	1	240644-1	PLATE, REAR SHEAR	11
-	2	2	1-240645-1	SPACER, SHEAR PLATE	10
-	1	1	240642-2	PLATE, FRONT SHEAR	9
1	2	1	1333215-6	ANVIL, COMBINATION	8
-	1	1	240651-9	BLADE, SLUG	7
-	1	1	1901681-5	HOLDDOWN, TERMINAL	6
-	1	1	240641-7	SPACER	5
-	1	1	238009-1	BLOCK, FL CRIMPER SPACER	4
1	2	1	1-456134-8	CRIMPER, INSULATION F PREMIUM	3
-	1	1	455888-3	SPACER, CRIMPER	2
1	2	1	1-456404-8	CRIMPER, WIRE PREMIUM	1

THIS DRAWING IS A CONTROLLED DOCUMENT OF THE ORGANIZATION IT IS SUBJECT TO THE PROTECTIVE POLICY OF THE ORGANIZATION IT WILL BE CONTROLLED FOR THE ENTIRE LIFETIME.		DATE: 06JUL2006 CHK: LOFTHOUSE		Tycos Electronics Harrisburg, PA 17105-3608		REV: A	
DIMENSIONS: mm(INCHES)		TOLERANCES (UNLESS OTHERWISE SPECIFIED):		NAME: END FEED SYSTEM III APPLICATOR		RESTRICTED TO:	
		0 PLC ±.0 1 PLC ±0.1 2 PLC ±0.02 3 PLC ±0.005 4 PLC ±0.0005 ANGLES ±.1		PRODUCT SPEC		SIZE CASE CODE DRAWING NO.	
		APPLICATION SPEC		A1 00779 C-1911247		SCALE 3:5 SHEET 1 OF 1 REV A	
MATERIAL: F153H		WEIGHT: CUSTOMER DRAWING					

Mouser Electronics

Authorized Distributor

Click to View Pricing, Inventory, Delivery & Lifecycle Information:

[TE Connectivity:](#)

[1911247-1](#)