

**Ordering number** CN12107\_LENA-S-DL

Family	Lena	FWHM	11 degrees
Type	-	Efficiency	80 %
LED	CXA2011	cd/Im	-
Color	Metal	Gerber File	Available
Diameter	111 mm		
Height	88.6 mm		
Style	Round		
Optic Material	PC		
Holder Material	PC		
Fastening	Screw		
Status	Ready		

**Ordering number** CN12167\_LENA-M-DL

Family	Lena	FWHM	19 degrees
Type	-	Efficiency	78 %
LED	CXA2011	cd/Im	4.100
Color	Metal	Gerber File	Available
Diameter	111 mm		
Height	88.6 mm		
Style	Round		
Optic Material	PC		
Holder Material	PC		
Fastening	Screw		
Status	Ready		

**Ordering number** CN12109\_LENA-W-DL

Family	Lena	FWHM	42 degrees
Type	-	Efficiency	75 %
LED	CXA2011	cd/Im	-
Color	Metal	Gerber File	Available
Diameter	111 mm		
Height	88.6 mm		
Style	Round		
Optic Material	PC		
Holder Material	PC		
Fastening	Screw		
Status	Ready		

**NOTE:** The typical divergence will be changed by different color, chip size and chip position tolerance. The typical total divergence is the full angle measured where the luminous intensity is half of the peak value.



## PRODUCT DATASHEET

### Lena series

last update 23/2/2014

#### GENERAL INFORMATION

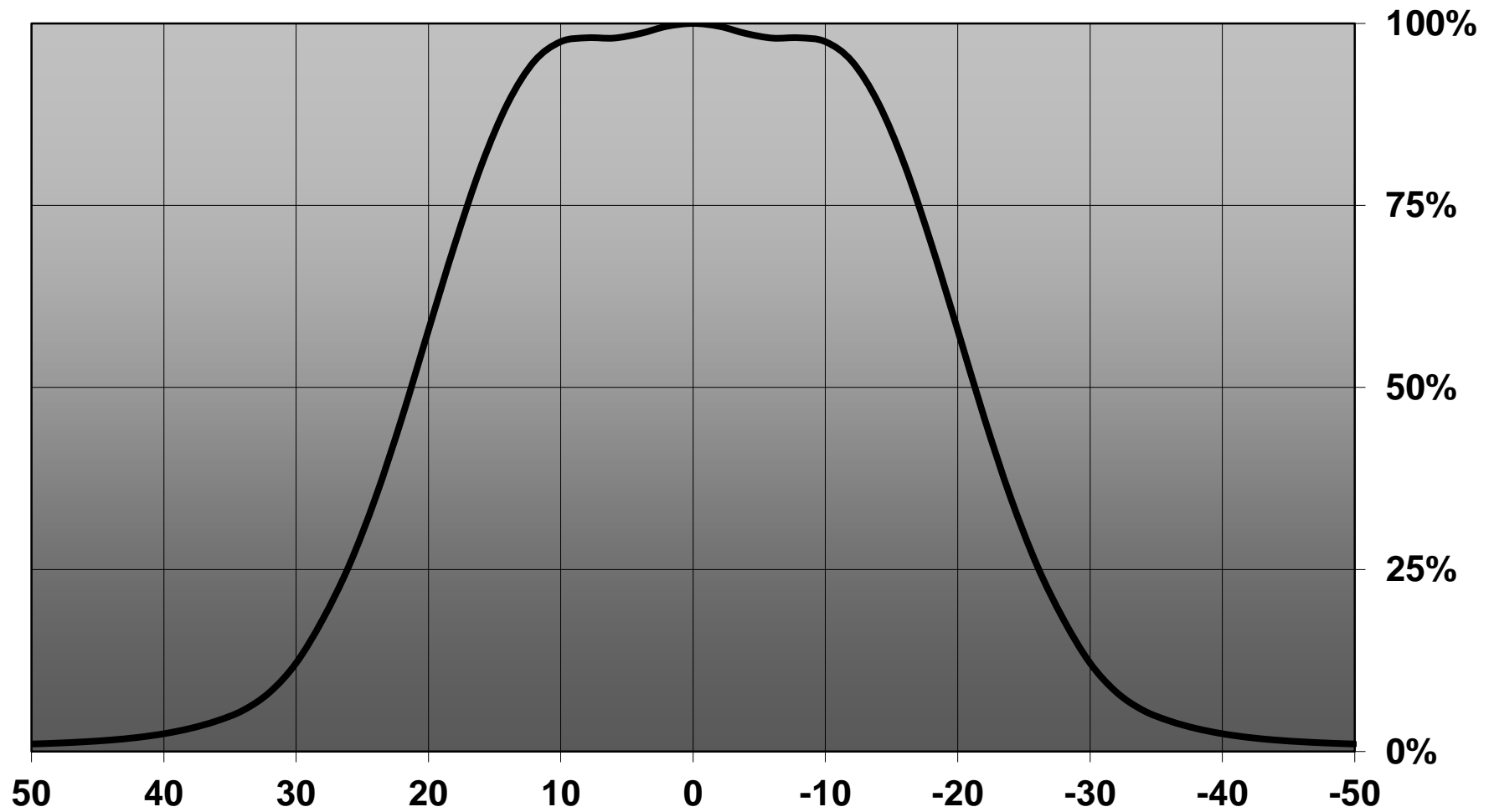
- Product series especially designed & optimized for CXA2011 series of LEDs.
- Special care taken to make light distribution as uniform as possible.
- Lens material optical grade PC with high UV and temperature resistance (120 degrees of Celcius / 248 degrees of Fahrenheit). Allows use of high current and temperature conditions.

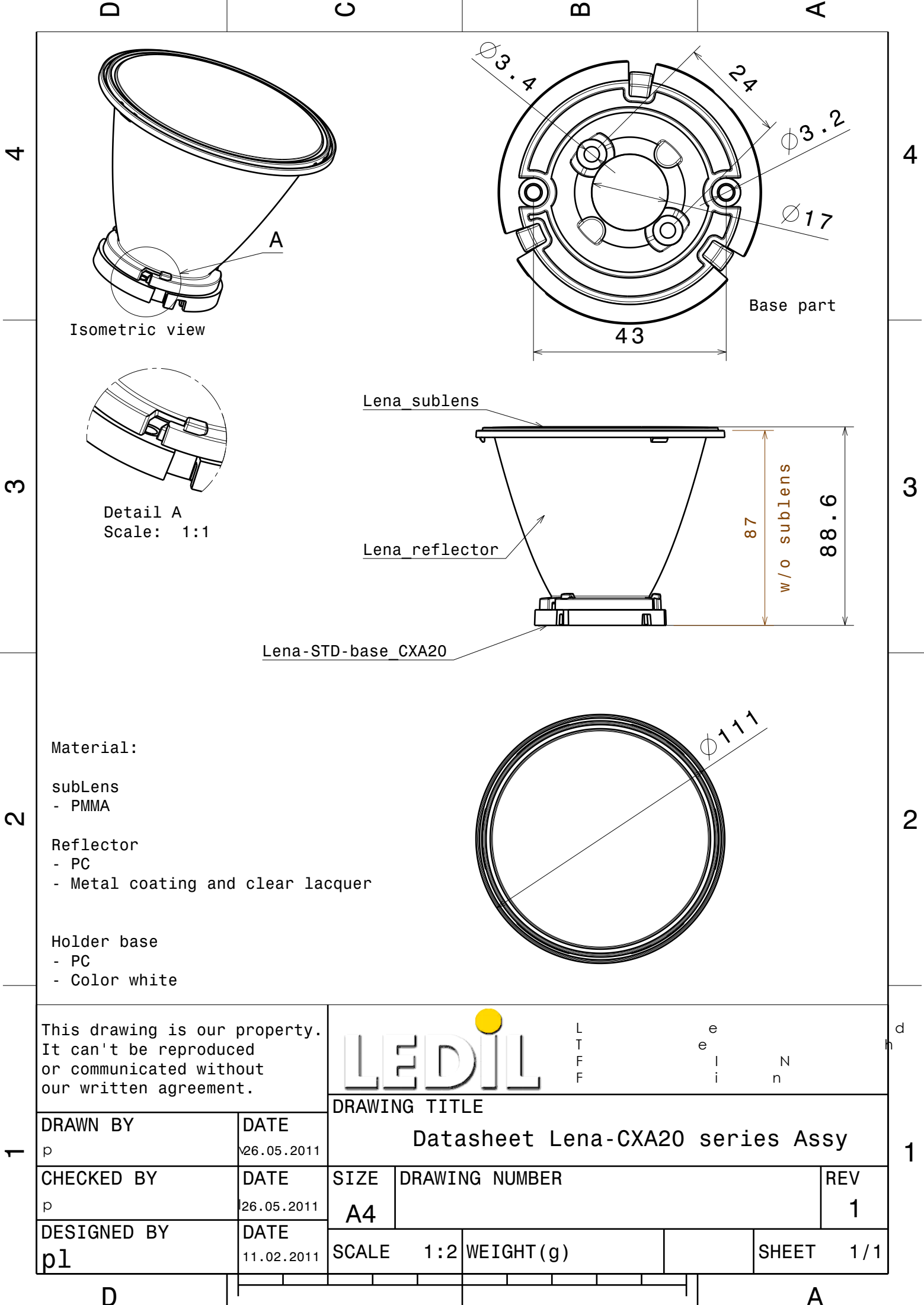
Please find more information about used materials from below:

[http://ledil.fi/sites/default/files/Documents/Technical/Material/PC%20Makrolon%202400\\_2407\\_2456\\_2458-UL.pdf](http://ledil.fi/sites/default/files/Documents/Technical/Material/PC%20Makrolon%202400_2407_2456_2458-UL.pdf)

- Reflector is made of aluminium coated PC (120 degrees of Celcius / 248 degrees of Fahrenheit) with protective lacquer (110 degrees of Celcius / 230 degrees of Fahrenheit).
- Optic holder molded by high quality PC material (120 dergees of Celcius / 248 degrees of Fahrenheit).

**Relative intensity of CA12109\_Lena-W-Diffuser-Lens\_CXA20**





This drawing is our property.  
It can't be reproduced  
or communicated without  
our written agreement.



DRAWING TITLE

Datasheet Lena-CXA20 series Assy

DRAWN BY  
p

DATE  
26.05.2011

CHECKED BY  
p

DATE  
26.05.2011

SIZE  
A4

DRAWING NUMBER

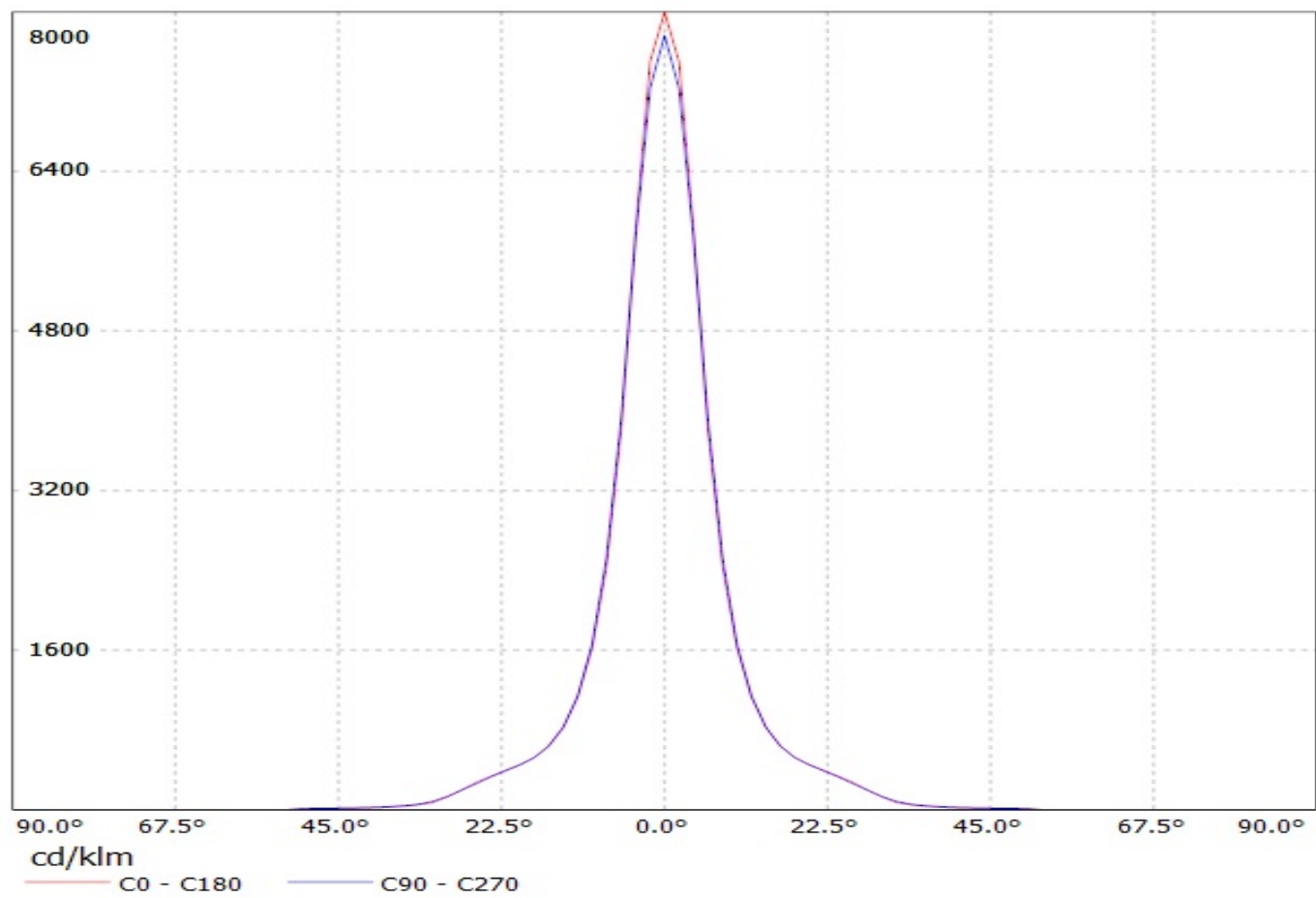
REV  
1

DESIGNED BY  
pl

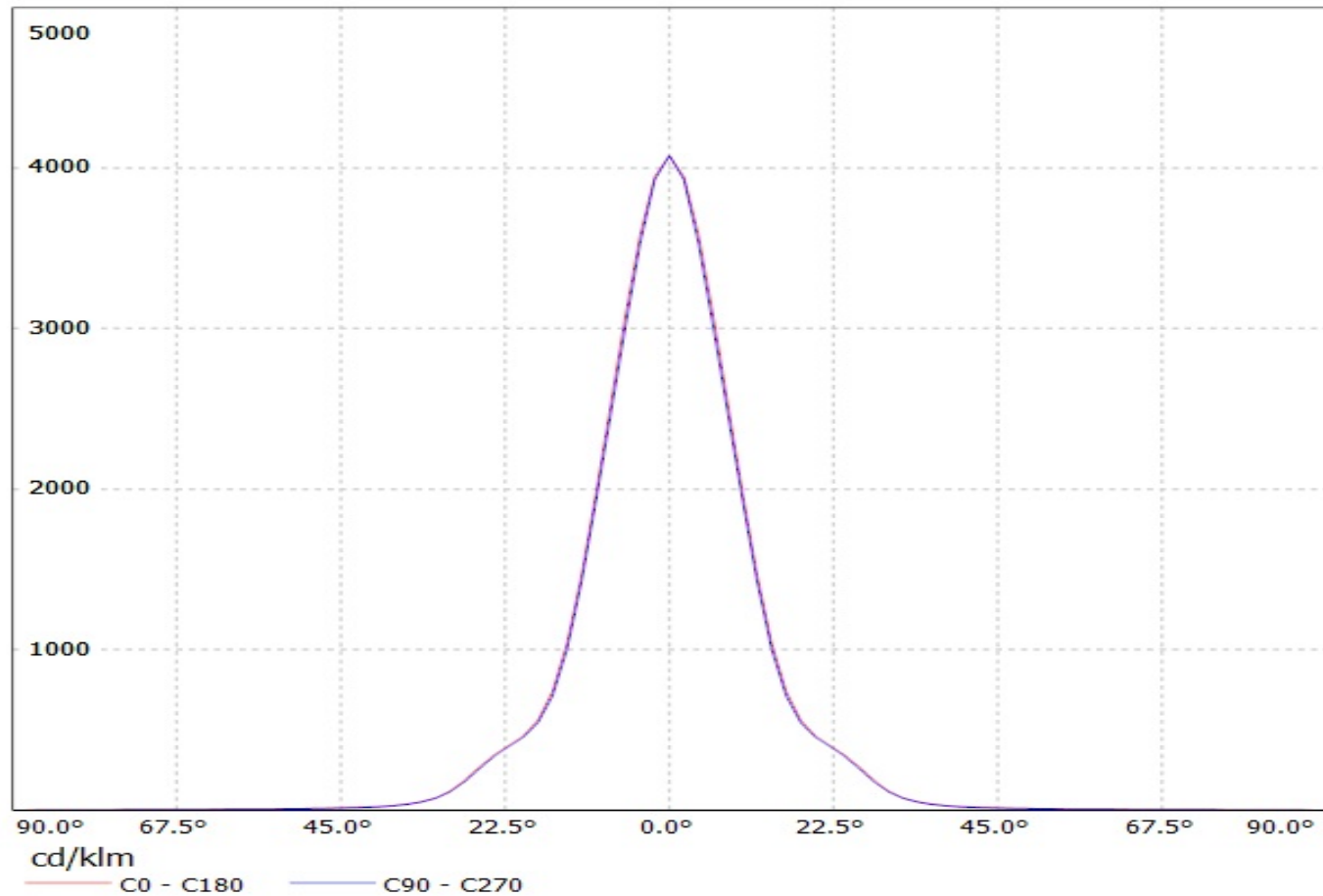
DATE  
11.02.2011

SCALE 1:2 WEIGHT (g) SHEET 1/1

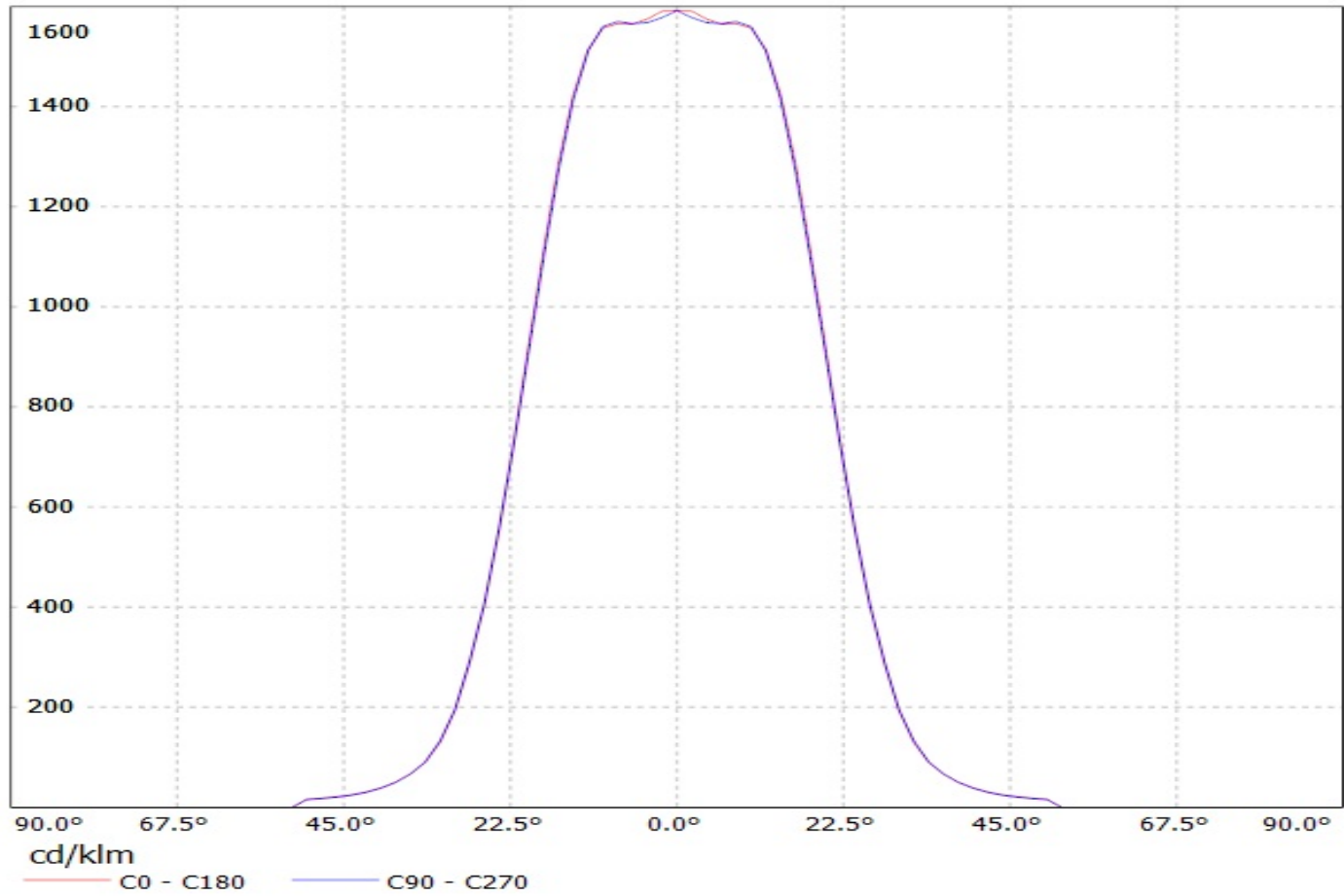
Luminaire: Ledil Oy CA12107\_Lena-S-Diffuser-Lens\_CXA20 CA12107\_Lena-S-Diffuser-Lens\_CXA20  
Lamps: 1 x Cree-CXA20



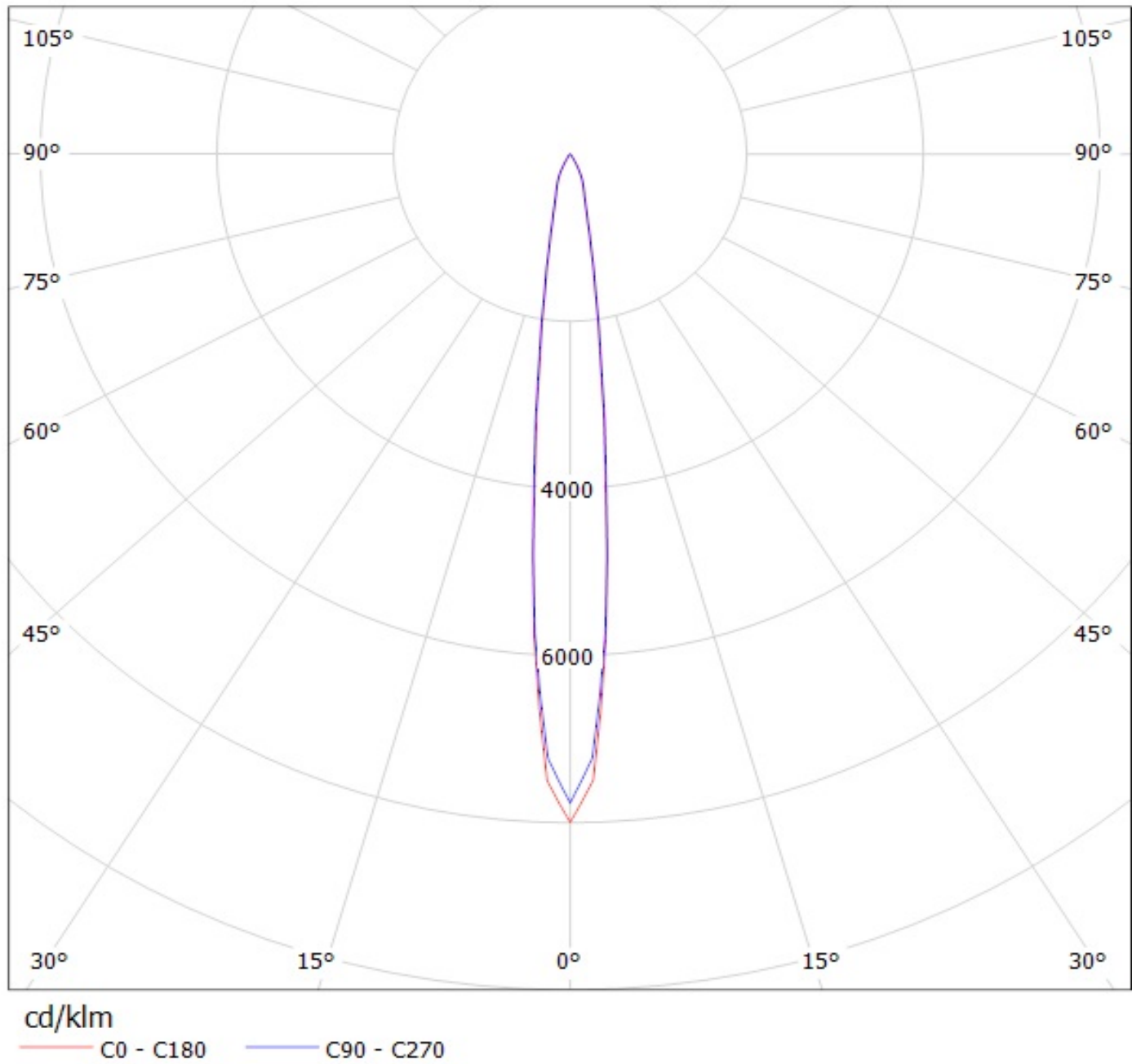
Luminaire: Ledil Oy CA12167\_Lena-M-Diffuser-Lens\_CXA20 CA12167\_Lena-M-Diffuser-Lens\_CXA20  
Lamps: 1 x Cree CXA20 250mA 819lm



Luminaire: Ledil Oy CA12109\_Lena-W-Diffuser-Lens\_CXA20 CA12109\_Lena-W-Diffuser-Lens\_CXA20  
Lamps: 1 x Cree CXA20

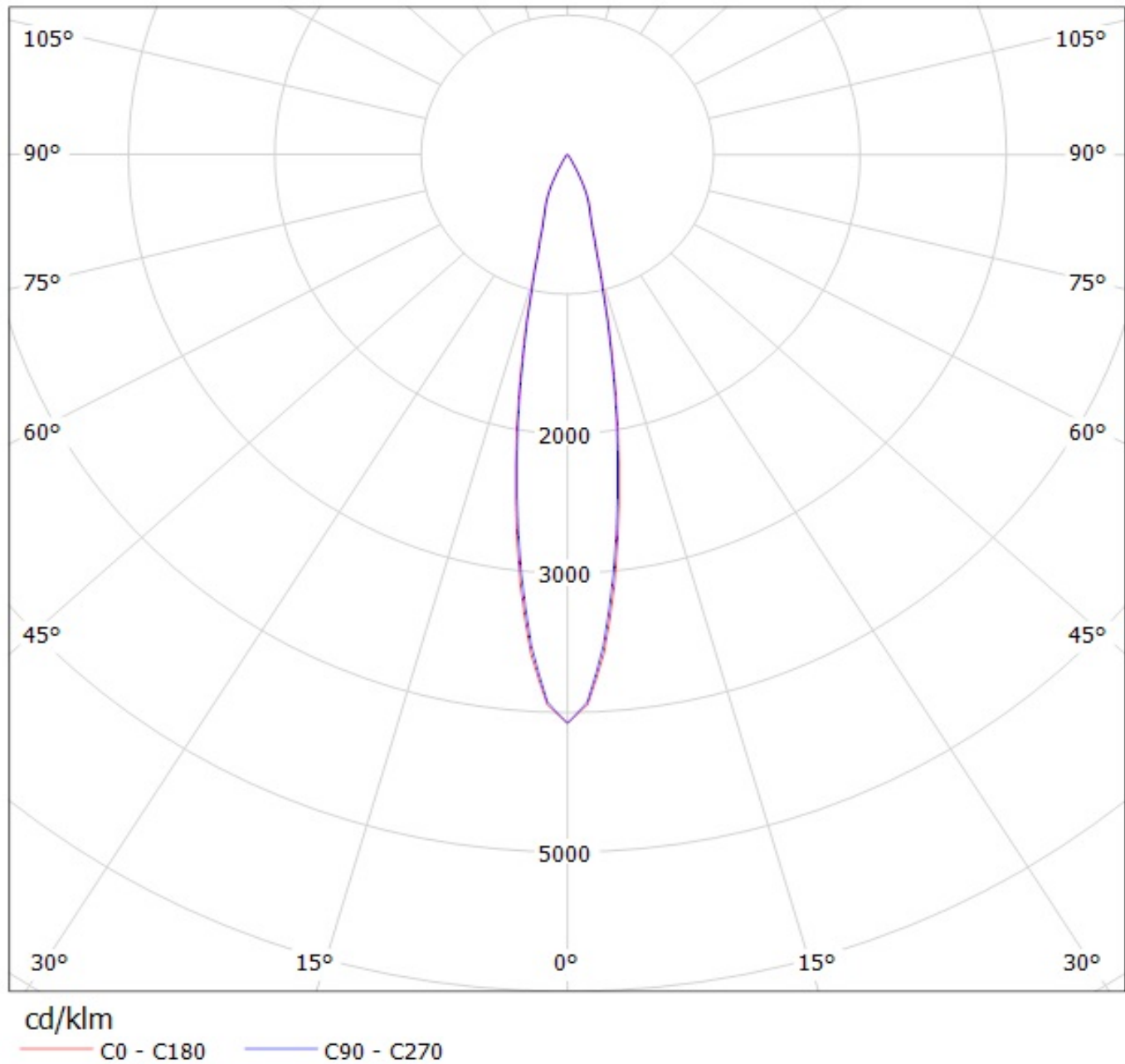


Luminaire: Ledil Oy CA12107\_Lena-S-Diffuser-Lens\_CXA20 CA12107\_Lena-S-Diffuser-Lens\_CXA20  
Lamps: 1 x Cree-CXA20





Luminaire: Ledil Oy CA12167\_Lena-M-Diffuser-Lens\_CXA20 CA12167\_Lena-M-Diffuser-Lens\_CXA20  
Lamps: 1 x Cree CXA20 250mA 819lm



Luminaire: Ledil Oy CA12109\_Lena-W-Diffuser-Lens\_CXA20 CA12109\_Lena-W-Diffuser-Lens\_CXA20  
Lamps: 1 x Cree CXA20

