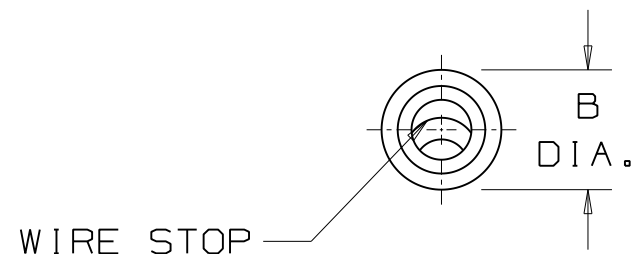
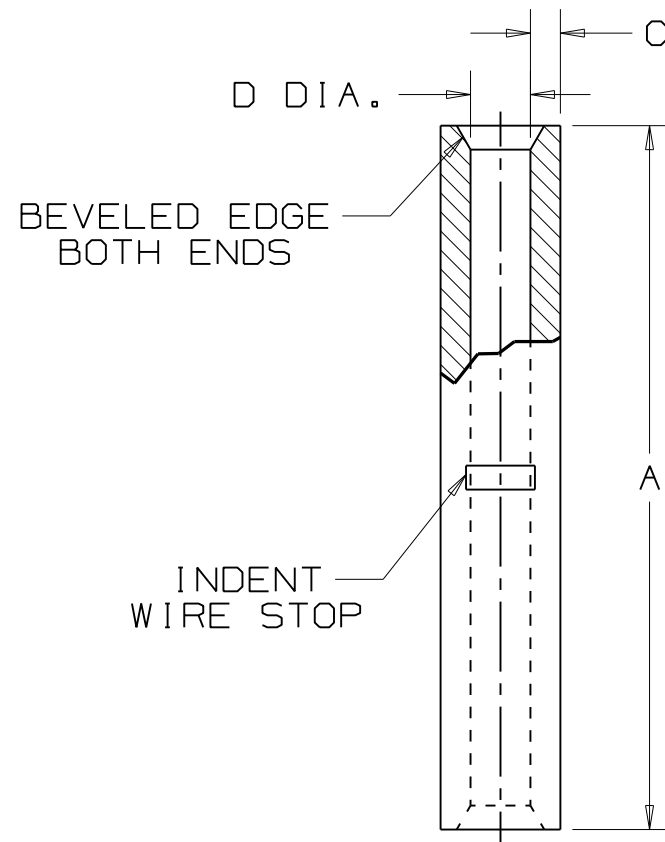



PANDUIT PART NUMBER	WIRE SIZE	DIMENSIONS in.			
		$\pm .03$ A	$\pm .01$ B DIA.	$\pm .003$ C	$\pm .01$ D DIA.
BS22	26-22	.47 (11.9)	.08 (2.0)	.02 (0.5)	.04 (1.0)



NOTES:

1. UL LISTED AND CSA CERTIFIED FOR:
 - A. #26-22 AWG SOLID OR STRANDED COPPER WIRE
 - B. 302° F (150° C) MAX. TEMP. RATING
2. MATERIAL:
 - A. .02 (0.5) THK COPPER, TIN PLATED
3. See www.panduit.com FOR PART NUMBER SUFFIX DESIGNATION FOR PACKAGE SIZE
4. DIMENSIONS IN BRACKETS ARE IN MILLIMETERS
5. INSTALLATION TOOLS:
CT-100 POCKET B
6. WIRE STRIP LENGTH: $9/32^{+1/32}_{-0}$ (7.1 $^{+.8}_{-.0}$)



04	4/11	SB		ADDED PACKAGING NOTE #3				 PANDUIT CORP. TINLEY PARK, ILLINOIS			
03	1/01	RM		FILESPEC WAS N41336_PCD_02							
02	12/94	TH		UPDATED NOTES AND DIMENSIONS	02709						
1	9-88	DW		REDRAWN WITH REVISIONS							
								#26-22 BARREL NON-INSULATED BUTT SPLICE			
REV	DATE	BY	CHK	DESCRIPTION	ECN #	CUST	PM	DRAWN BY DAW	CHK'D	SCALE NONE	DRAWING NO. A41336

Mouser Electronics

Authorized Distributor

Click to View Pricing, Inventory, Delivery & Lifecycle Information:

Panduit:

BS22-M