



MMC-1170C/1190C

Cost-Effective Reviewing Color Display

The Best Reviewing Station for Endoscope, Ultrasound, MRI and CT Devices

Taipei, Taiwan, January 6, 2009- The IEI MMC-1170C/1190C are 17"/19" cost-effective medical displays, easily integrated into CT, MRI and endoscope applications. The adjustable Gamma 2.2, color temperature and DICOM (under 6500K color temperature) make the monitors perfect to view both color and grayscale images, achieving the optimal display quality for images from different modalities. Multiple video interfaces on the versatile MMC-1170C and MMC-1190C enable these systems to be interfaced with VGA, DVI, S-Video, Component and BNC devices.

For customer assurance, the MMC-1170C/1190C comply with stringent safety and EMC emission standards, including UL 60601-1, CE (EN 60601-1-2), CCC and FCC Parts 18. In addition, to ensure the best reliability, the quality management system for IEI's medical products is ISO-13485 certified. For more product information, please contact with IEI sales or visit our website at <http://www.pacsmate.com>.

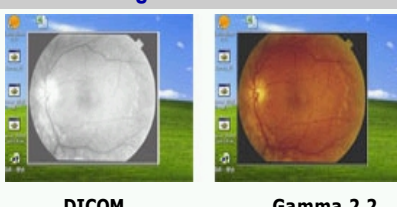
Multiple Video Inputs

The DVI, VGA, S-video, Component and BNC video inputs make the MMC-1170C/1190C the best image reviewing terminal when connected with different medical devices, such as CT, CR and MRI. The 1000:1 high-contrast ratio of MMC-1190C provides more accurate images for reviewing applications.



Gamma 2.2, DICOM and Multiple Color Temperature Settings

The MMC-1170C/1190C can be adjusted with Gamma 2.2 and DICOM preset (under 6500K color temperature) for different brightness conditions. The easy color temperature adjustment, including 3600K/ 4600K/ 5600K/ 6500K/7500K ensures the optimal display quality when viewing images from different modalities.



Smart Software OSD Utility

The smartOSD is an intelligent On-Screen Display control. The user-friendly OSD interface under Windows environment enables users to adjust the monitor easily from a remote system.

The smartOSD allows some functions as below:

- Power on/off
- Luminance selection
- Gamma selection
- Color temperature selection
- Monitor information

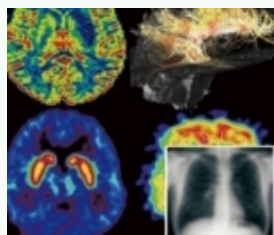


Picture-in-Picture Function

PIP function enables a second images viewed in a small on-screen window. The picture-outside-picture can be set for image comparison purpose.

Flexible PIP settings:

- Upper/lower, left/right of window's position
- Small, medium and large on-screen windows
- Independent brightness and contrast control for PIP windows



Specifications

	MMC-1170C	MMC-1190C
LCD size (inch)	17"	19"
Resolution	1280 x 1024	
Brightness (cd/m²)	300	
Contrast Ratio	800:1 (typical)	1000:1 (typical)
Pixel Pitch (mm)	16.7M colors	
Viewing Angle	160°(H)/160°(V)	178°(H)/178°(V)
Touch Screen	Optional resistive 5-wire (RS-232 interface)	
Input Video Signal Connector	1 x Composite (NTSC/PAL) 1 x Component (YPbPr) 1 x S-Video 1 x VGA 1 x DVI-D	
Remote Control	Auto-dimming & IR remote control function	
Speakers	2 x 1~3W AMP	
OSD Function	7 x buttons (On/off, Auto, Left, Up, Down, Right, Menu)	
LED Function	1 x LED on Front Panel for Power on/off	
Power in	DC 12V in	
Power adapter	Medical Grade, AC 110V~240V to DC 12V	
IP level	IP 64	
Physical Dimensions (W x H x D)	Without stand: 428mm x 350mm x 65mm	Without stand: 469.94mm x 382.46mm x 67mm
Operation Temperature	0°C~40°C	
Storage Temperature	-20°C~60°C	
Safety & EMI	UL60601-1, EN60601-1, CCC, CE(EN60601-1-2), FCC Part 18	
Preset Gamma	Gamma 2.2	
DICOM	DICOM preset under 6500K color temperature	
Packing List	Power cord (1 x EU, 1 x US) 1 x Power adapter 1 x User manual & Diver CD 1 x Remote control 1 x Screw set 1 x Touch pan RS-232 cable /Touch pen Driver CD (WT-R model only)	1 x DVI cable 1 x VGA cable (DB-15 to DB-15) 1 x VGA cable (DB-15 to BNC) 1 x Component cable (Mini Dim to BNC) 1 x Component cable (Mini Dim to RCA)
Optional Mounting Kit	Wall mount kit: AFLWK-19 ARM: ARM-11 -RS, ARM-31-RS STAND: STAND-A19, STAND-B19	

Ordering Information

Part No.	Description
MMC-1190C	1.3 mega pixel, 19" color medical monitor
MMC-1190C/WT-R	1.3 mega pixel, 19" color medical monitor with touch screen RS-232 interface
MMC-1170C	1.3 mega pixel, 17" color medical monitor
MMC-1170C/WT-R	1.3 mega pixel, 17" color medical monitor with touch screen RS-232 interface



IEI Medical, the medical division of [IEI Technology Corp.](http://www.pacsmate.com), is a global manufacturer of high-resolution monochrome/ color diagnostic monitors and all-in-one medical panel PC. IEI Medical is committed to providing the health care community with reliable, high-performance and cost-effective products. All IEI medical products are ISO-9001, ISO-14000 and ISO-13485 compliant and are easily applied to a wide range of medical applications. IEI Medical is located in Taiwan and has very experienced R&D, Manufacturing, sales & marketing and customer service teams. Please visit our website for more information: www.pacsmate.com

Headquarters
IEI Technology Corp.
 TEL : +886-2-86916798
 FAX : +886-2-66160028
 Email : sales@pacsmate.com
<http://www.pacsmate.com>
 No. 29, Jhongsing Rd.,Sijhih
 City,Taipei County, 221, Taiwan

America-United States
IEI Technology USA Corp.
 TEL : +1-909-595-2819
 FAX : +1-909-595-2816
 Email : sales@pacsmate.com
<http://www.pacsmate.com>
 168 University Parkway, Pomona,
 CA 91768

China
IEI Technology SH Corp.
 TEL : +86-21-3462-7799
 FAX : +86-21-3462-7798
 Email : sales@pacsmate.com
<http://www.pacsmate.com>
 3F No. 1728 Yi-Shan Road, Min-Hang,
 ShangHai, China