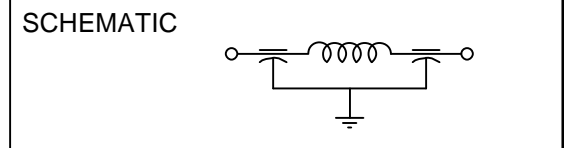


- NOTES:
- 1) HARDWARE IS INCLUDED.
 - 2) SUGGESTED MOUNTING HOLE: Ø.228 [Ø5.79]
 - 3) THIS IS A LEAD FREE PRODUCT.
 - 4) MAX. REFLOW IS 245°C FOR 5 SECONDS.

LEAD FINISH	SILVER
BUSHING FINISH	SILVER
CAPACITANCE	5500 pF GMV
TEMP. RANGE	-55°C to +125°C
CURRENT	10 AMPS MAX.
WORKING VOLTAGE	85°C 200 VDC MAX. 125°C 100 VDC MAX.
DC RESISTANCE	.01 Ohms MAX.


I.L. PER MIL-STD-220 @ 25°C (NO LOAD)	
FREQ. MHz	I.L. (dB)
1	----
10	20
100	68
1 GHz	70
10 GHz	70



MARKING:

PART: SCI 1201F-066

BAG: 1201F-066
DATE CODE
QTY. / BAG
(100 PER BAG MAX.)

CN 58784-ENG	01	00	REV. NO.	UNLESS OTHERWISE SPECIFIED DIMENSIONS ARE IN INCHES [MILLIMETERS] DO NOT SCALE	TOLERANCES UNLESS OTHERWISE SPECIFIED	 Description FAIRVIEW PENNSYLVANIA FILTER, SING, Pi, BSHG 1201F-066
CN 18622-CPD	00	CHANGE NOTICE	Dec. .x ±		Dwn. Hassett	
			Dec. .xx ±		Date 5-4-11	
			Dec. .xxx ± .010 [.25]		Engr. McAlevy	
			Angles ± 0° 30"	THIRD ANGLE PROJECTION	CODE IDENT. NO. 0LSP2	Sheet 1 of 1