



# Adapter for Aromat HB2E Relay w/SM Type TX2SA

## FEATURES

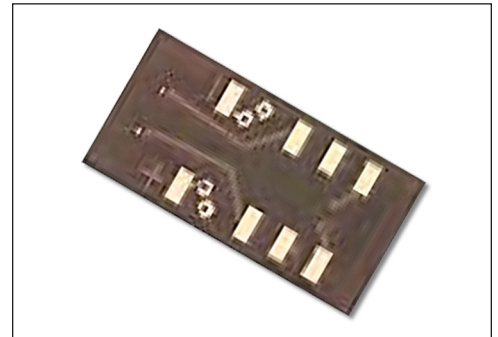
- A cost-effective means of upgrading to SOIC without changing your PCB layout.
- Available on 0.300 [7.62] centers.

## GENERAL SPECIFICATIONS

- BOARD MATERIAL: 0.062 thick FR-4 with 1-oz. Cu traces, both sides
- PINS: Brass 360 1/2-hard per UNS C36000, ASTM B16/B16M
- PIN PLATING: 200 $\mu$  [5.08 $\mu$ ] 93/7 Sn/Pb per ASTM B579-73 over 100 $\mu$  [2.54 $\mu$ ] Ni per SAE AMS-QQ-N-290
- OPERATING TEMPERATURE: 221°F [105°C]

## MOUNTING CONSIDERATIONS

- SUGGESTED PCB HOLE SIZE: 0.028  $\pm$  0.003 [0.71  $\pm$  0.08] dia.



**CUSTOMIZATION:** In addition to the standard products shown on this page, Aries specializes in custom design and production. Special materials, platings, sizes, and configurations can be furnished, depending on the quantity. **NOTE:** Aries reserves the right to change product general specifications without notice.

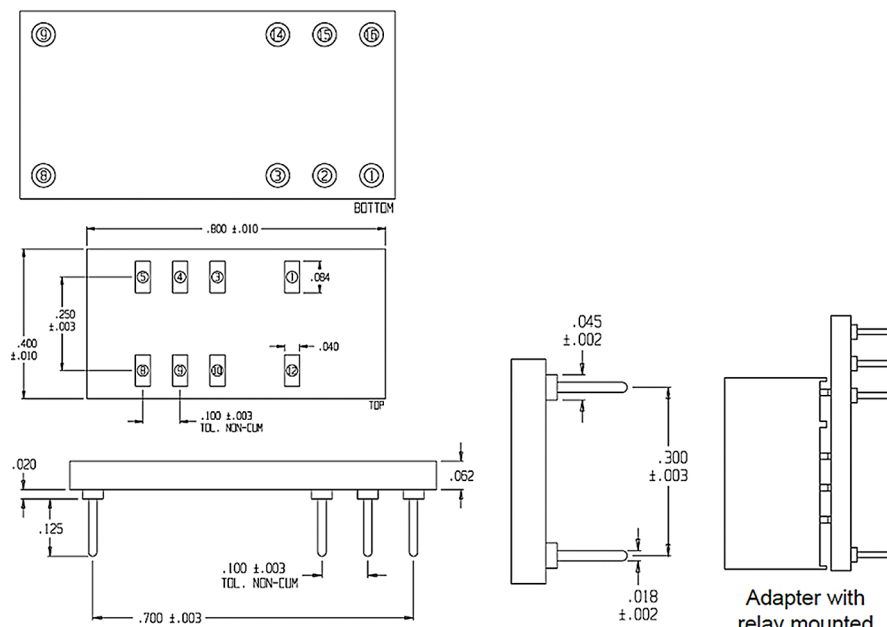
## ORDERING INFORMATION

P/N 08-305984-10 Standard Polarity Adapter  
P/N 08-305984-11 Standard Polarity Adapter with  
Aries-supplied TX2SA-12V Relay mounted  
P/N 08-307472-10 Reverse Polarity Adapter  
P/N 08-307472-11 Reverse Polarity Adapter with  
Aries-supplied TX2SA-12V Relay mounted

ALL DIMENSIONS: INCHES [MILLIMETERS]

ALL TOLERANCES:  $\pm$ 0.005 [0.13] UNLESS OTHERWISE SPECIFIED

CONSULT FACTORY FOR OTHER SIZES AND CONFIGURATIONS



Standard Polarity Connection List 08-305084-10	
Top TX Pad	Bottom HB Pin
1	3
3	1
4	8
5	2
8	15
9	9
10	16
12	14

Reverse Polarity Connection List 08-307472-10	
Top TX Pad	Bottom HB Pin
1	14
3	1
4	8
5	2
8	15
9	9
10	16
12	3



**ARIES**  
ELECTRONICS, INC.

Bristol, PA 19007-6810 USA  
TEL (215) 781-9956 • FAX (215) 781-9845  
WWW.ARIESELEC.COM • INFO@ARIESELEC.COM