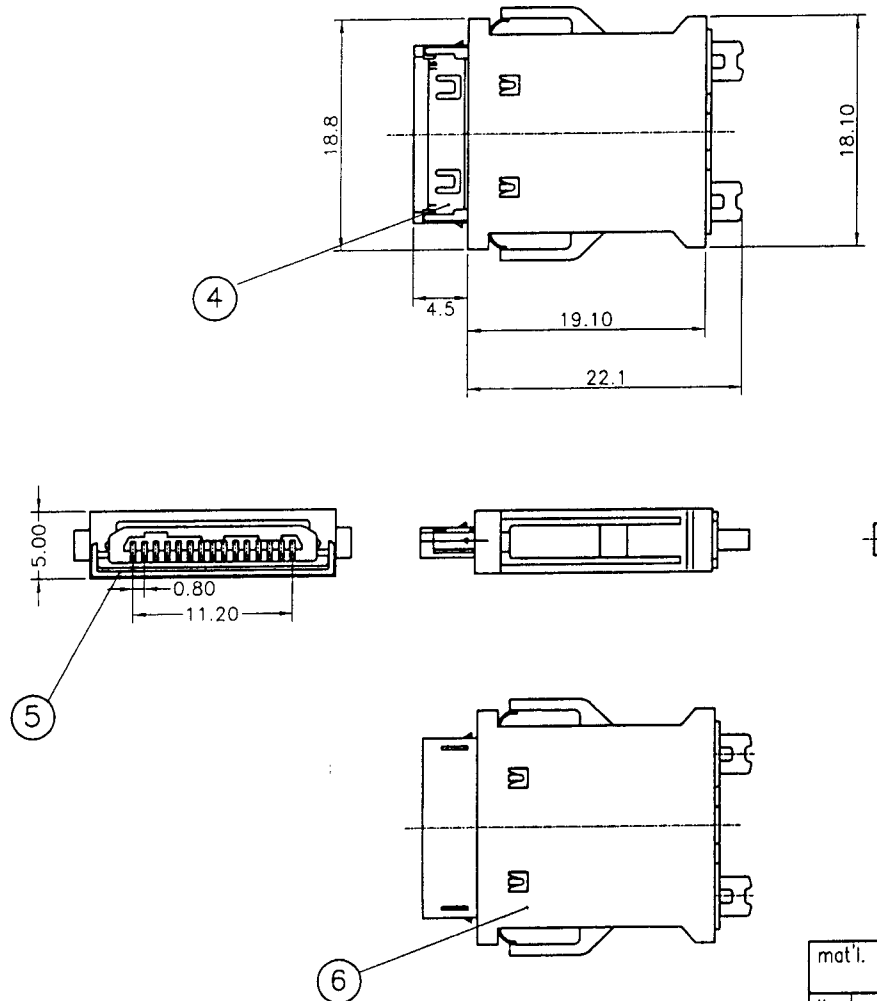


Tous droits strictement reserves. Reproduction ou communication a des tiers interdite sous quelque forme que ce soit sans autorisation écrite du propriétaire.
 Property of FCI Electronics
 Copyright FCI Electronics Inc.

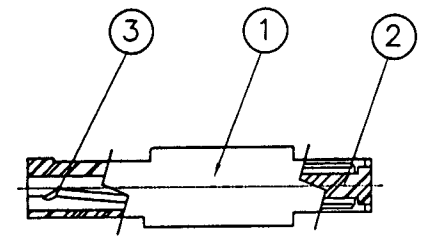
PART NUMBER
 XXXXX-XXXXX



NOTES:

1. MATERIAL:
 - ① HOUSING: THERMOPLASTIC POLYESTER, GLASS-FILLED, UL94V-0, BLACK.
 - ② INSERT: THERMOPLASTIC POLYESTER, GLASS-FILLED, UL94V-0, BLACK.
 - ③ CONTACT: PHOSPHOR BRONZE.
 - ④ METAL TOP SHELL : STAINLESS STEEL.
 - ⑤ METAL BOTT SHELL : STAINLESS STEEL.
 - ⑥ PLASTIC COVER: THERMOPLASTIC POLYESTER, GLASS-FILLED, UL94V-0, BLACK.
2. PLATING:
 - CONTACT: UNDERPLATED 50u" NICKEL OVERALL,
 - PLATED 150u" TIN/LEAD IN SOLDER TAIL.
 - SELECT PLATED 30u" Au MIN. ON CONTACT AREA.

3. P/N: 55605- X X X X
 CONTACT NUMBER : 15 : FULL POS.
 KEY TYPE :
 0 : A12 TYPE
 1 : A13 TYPE
 2 : A23 TYPE
 3 : B12 TYPE
 4 : B13 TYPE
 5 : B23 TYPE
 6 : A00 TYPE
 7 : B00 TYPE
 BOTT SHELL CRIMP SIZE :
 1 : W/RIVET #4.9
 2 : W/RIVET #6.0
 3 : W/O RIVET



| | | | | | | | | | |
|-------------|----------------|------|---------|---------------------------------------|-------------------|---------------|--|---|--|
| mat'l. code | | | | tolerances unless otherwise specified | | CUSTOMER COPY | | Electronics FCI www.fciconnect.com | |
| ltr | ecn no | dr | date | | .X ±0.38 | projection | | title PCMCIA 1/O 15P CABLE CONNECTOR | |
| A | T10069 | J.H | 3/16/00 | linear | .XX ±0.25 | | | | |
| B | T10097 | J. H | 3/22/01 | | .XXX ±0.20 | | | product family PCMCIA | |
| | | | | angles | 0° ±2° | | | code TWN | |
| | | | | dr | JASON HSU 3/16/00 | mm | | size dwg no | |
| | | | | enrg | JASON HSU 3/16/00 | | | A4 55605 | |
| | | | | chr | J. TSAO 3/16/00 | scale | | sheet 1 of 1 | |
| | | | | appd | L. WANG 3/16/00 | N/A | | | |
| sheet index | revision sheet | B | 1 | | | | | cage code 22526 | |