



SAW Components

Data Sheet B7732, Pb-free

Data Sheet

A large, stylized graphic of a globe is shown, with the word "EPCOS" overlaid in large, glowing, white letters. The globe is rendered with a grid of latitude and longitude lines, and the letters are positioned diagonally across the globe, creating a sense of global reach and connectivity.



SAW Components

B7732

Low-Loss Filter

1575,42 MHz

Data Sheet

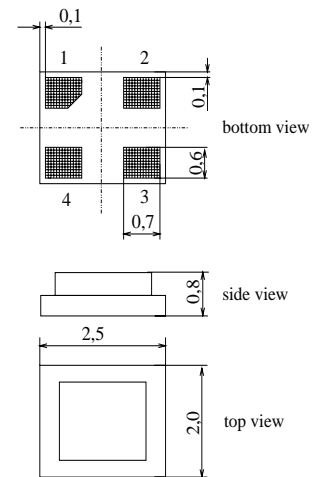
Chip sized SAW package DCS4H

Features

- Low-loss RF filter for iDEN GPS receivers
- Low amplitude ripple
- Low insertion attenuation
- Usable passband 2MHz
- No matching network required for operation at 50 Ω
- Package for **Surface Mounted Technology (SMT)**
- Pb-free

Terminals

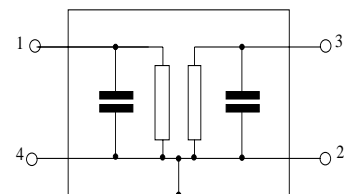
- Ni, gold-plated



Dimensions in mm, approx. weight 0,015g

Pin configuration

- | | |
|-----|--------|
| 1 | Input |
| 3 | Output |
| 2,4 | Ground |



Type	Ordering code	Marking and Package according to	Packing according to
B7732	B39162-B7732-K710	C61157-A7-A136	F61074-V8189-Z000

Electrostatic Sensitive Device (ESD)

Maximum ratings

Operable temperature range	T	- 40 / + 85	$^{\circ}\text{C}$	Machine Model, 10 pulses
Storage temperature range	T_{stg}	- 40 / + 85	$^{\circ}\text{C}$	
DC voltage	V_{DC}	5	V	
ESD voltage	V_{ESD}^{*}	50*	V	
Input power max.				source and load impedance 50 Ω continuous wave signal
1574,3 ... 1576,7 MHz	P_{IN}	3	dBm	
50,0...1535,5 and 1625,5 ... 6000 MHz	P_{IN}	15	dBm	

* - acc. to JESD22-A115A (Machine Model), 10 negative & 10 positive pulses



SAW Components

B7732

Low-Loss Filter

1575,42 MHz

Data Sheet

Characteristics

Operating temperature range: $T = -40 \dots +85 \text{ }^{\circ}\text{C}$
Terminating source impedance: $Z_S = 50 \text{ }\Omega$
Terminating load impedance: $Z_L = 50 \text{ }\Omega$

		min.	typ.	max.	
Nominal frequency	f_N	—	1575,42	—	MHz
Maximum insertion attenuation	α_{\max}				
1574,42 ... 1576,42 MHz		—	2,5	3,5	dB
Amplitude ripple (p-p)	$\Delta\alpha$				
1574,42 ... 1576,42 MHz		—	0,1	1,5	dB
Return loss (Input and Output)					
1575,42 ... 1576,42 MHz		12,0	18,0	—	dB
Absolute attenuation	α_{abs}				
806,00 ... 902,00 MHz		40	49	—	dB
902,00 ... 1475,42 MHz		35	47	—	dB
1475,42 ... 1535,42 MHz		30	44	—	dB
1612,00 ... 1675,42 MHz		32	41	—	dB
1675,42 ... 1792,00 MHz		35	45	—	dB
1792,00 ... 1804,00 MHz		42	45	—	dB
1804,00 ... 3500,00 MHz		35	40	—	dB
3500,00 ... 4000,00 MHz		20	32	—	dB
Temperature coefficient of frequency	TC_f	—	– 36	—	ppm/K



SAW Components

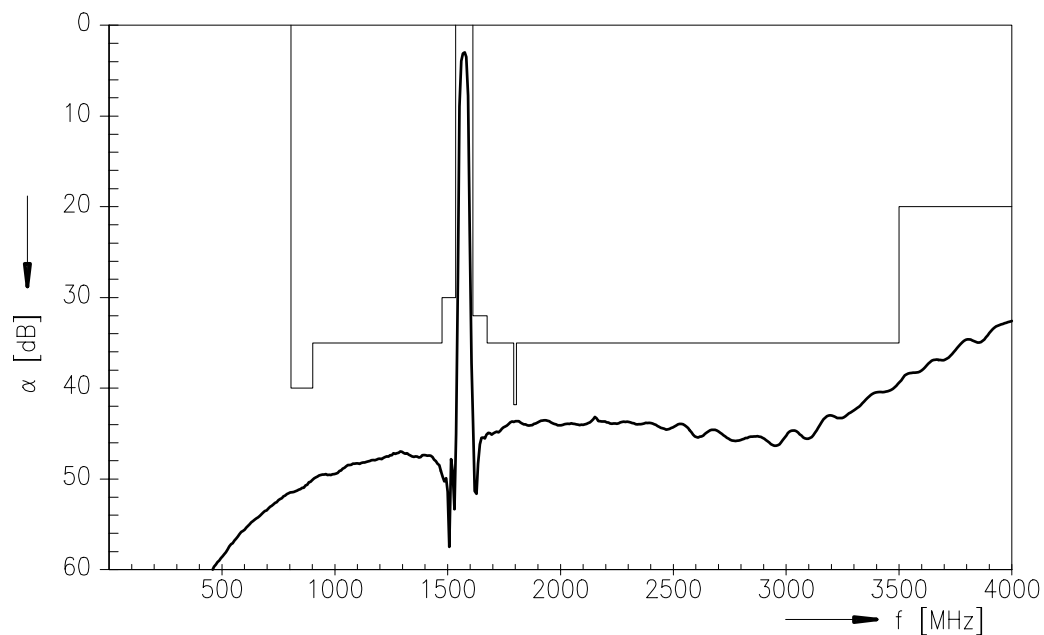
B7732

Low-Loss Filter

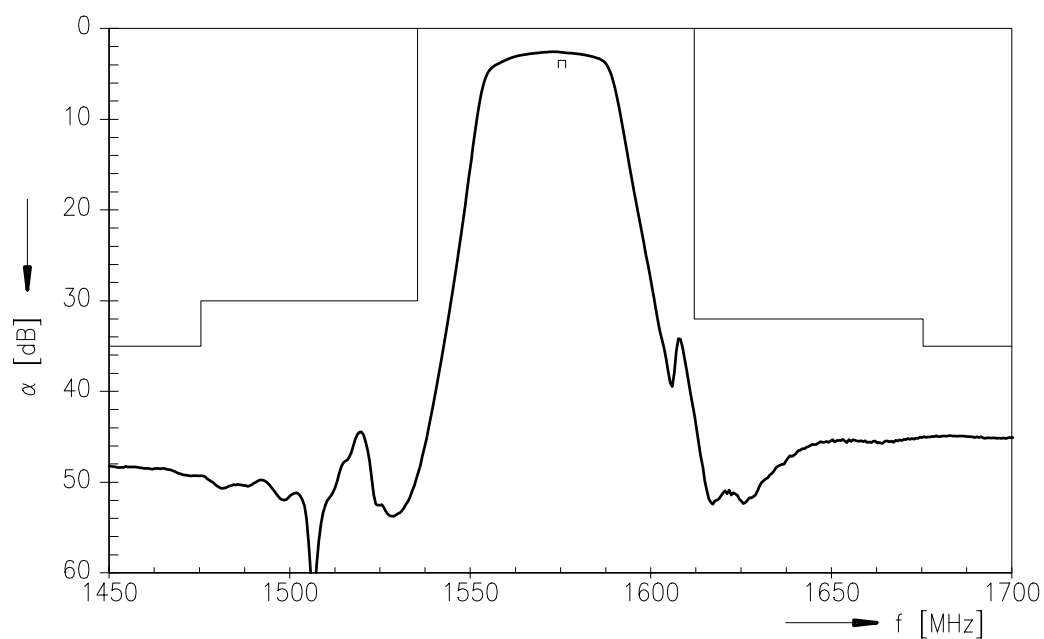
1575,42 MHz

Data Sheet

Transfer function



Transfer function (pass band)





SAW Components

B7732

Low-Loss Filter

1575,42 MHz

Data Sheet

Published by EPCOS AG

Surface Acoustic Wave Components Division, SAW MC PD

P.O. Box 80 17 09, 81617 Munich, GERMANY

© EPCOS AG 2005. Reproduction, publication and dissemination of this brochure and the information contained therein without EPCOS' prior express consent is prohibited.

Purchase orders are subject to the General Conditions for the Supply of Products and Services of the Electrical and Electronics Industry recommended by the ZVEI (German Electrical and Electronic Manufacturers' Association), unless otherwise agreed.

This brochure replaces the previous edition.

For questions on technology, prices and delivery please contact the Sales Offices of EPCOS AG or the international Representatives.

Due to technical requirements components may contain dangerous substances. For information on the type in question please also contact one of our Sales Offices.