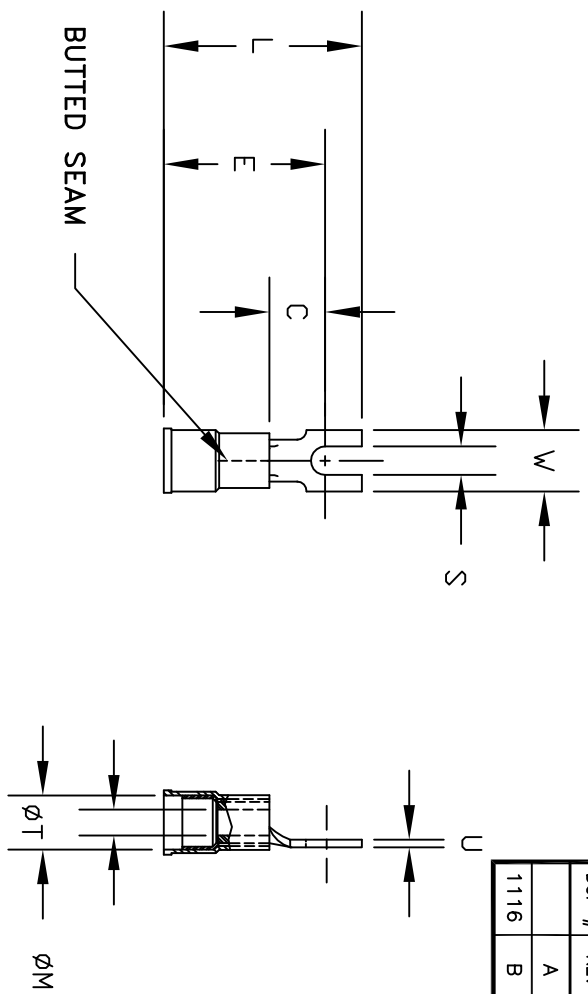


ALL RIGHTS RESERVED. NO PORTION OF THIS PUBLICATION, WHETHER IN WHOLE OR IN PART CAN BE REPRODUCED WITHOUT THE EXPRESS WRITTEN CONSENT OF SPC TECHNOLOGY.

| REVISIONS | | DOC. NO. SPC-F005 | * Effective: 12/21/98 | * DCP No: 880 | | | | |
|-----------|-----|-------------------------|-----------------------|---------------|--------|---------|--------|---------|
| DCP # | REV | DESCRIPTION | DRAWN | DATE | CHECKD | DATE | APPRVD | DATE |
| | A | Redrawn in Autocad | JAP | 11/27/91 | | | | |
| 1116 | B | Drawing was CBS-DY-**** | JWM | 6/11/01 | JC | 6/20/01 | JC | 6/20/01 |



NOTES:

1. MATERIAL: ELECTRO-TIN PLATED COPPER WITH NYLON 6/6 SLEEVE
FLAMMABILITY: UL94V-2
2. CONTINUOUS OPERATING TEMPERATURE: -40°F (-40°C) TO 167°F (75°C)
3. VOLTAGE RATING: 600 V
4. TO BE FREE OF BURRS.

| PART NUMBER | WIRE RANGE (AWG) | STUD SIZE | L | W | E | C | S | T | M | U | COLOR |
|-------------|------------------|-----------|------|-----|-----|-----|------|------|------|------|--------|
| CBS-DY-1006 | 12 - 10 | #6 .138 | 1.03 | .32 | .84 | .29 | .148 | .135 | .250 | .040 | YELLOW |
| CBS-DY-1010 | 12 - 10 | #10 .190 | 1.03 | .32 | .84 | .29 | .200 | .135 | .250 | .040 | YELLOW |
| CBS-DY-1406 | 16 - 14 | #6 .138 | .86 | .30 | .71 | .25 | .148 | .090 | .170 | .030 | BLUE |
| CBS-DY-1408 | 16 - 14 | #8 .164 | .86 | .30 | .71 | .25 | .174 | .090 | .170 | .030 | BLUE |
| CBS-DY-1410 | 16 - 14 | #10 .190 | .86 | .30 | .71 | .25 | .200 | .090 | .170 | .030 | BLUE |
| CBS-DY-1804 | 22 - 18 | #4 .112 | .84 | .25 | .69 | .25 | .120 | .070 | .145 | .030 | RED |
| CBS-DY-1806 | 22 - 18 | #6 .138 | .84 | .25 | .69 | .25 | .148 | .070 | .145 | .030 | RED |
| CBS-DY-1808 | 22 - 18 | #8 .164 | .84 | .30 | .69 | .25 | .174 | .070 | .145 | .030 | RED |
| CBS-DY-1810 | 22 - 18 | #10 .190 | .84 | .30 | .69 | .25 | .200 | .070 | .145 | .030 | RED |



DISCLAIMER: ALL STATEMENTS AND TECHNICAL INFORMATION CONTAINED HEREIN ARE BASED UPON INFORMATION AND/OR TESTS WE BELIEVE TO BE ACCURATE AND RELIABLE SINCE CONDITIONS OF USE ARE BEYOND OUR CONTROL. THE USER SHALL DETERMINE THE SUITABILITY OF THE PRODUCT FOR THE INTENDED USE AND ASSUME ALL RISK AND LIABILITY WHATSOEVER IN CONNECTION THEREWITH.



SPC TECHNOLOGY



OSHA Acceptable

| | | | | | |
|-----------------------|--|---------------|--|---|--|
| DRAWN BY: JC | | DATE: 3/7/91 | | DRAWING TITLE: Nylon Insulated Block Fork Terminals | |
| CHECKED BY: JOHN COLE | | DATE: 12/2/91 | | SIZE: A | |
| APPROVED BY: J Liska | | DATE: 12/2/91 | | DWG. NO. TA-351 | |
| | | | | ELECTRONIC FILE TA-351.dwg | |
| | | | | SCALE: NTS | |
| | | | | U.O.M.: INCHES [mm] | |
| | | | | SHEET: 1 OF 1 | |