

4

3

2

1

THIS DRAWING IS UNPUBLISHED.

RELEASED FOR PUBLICATION

© COPYRIGHT

ALL RIGHTS RESERVED.

LOC

DIST

REVISIONS

P	LTR	DESCRIPTION	DATE	DWN	APVD
	D1	ECR-14-010821	18JUL2014	GK	HMR

REPLACED BY OCEAN STYLE APPLICATOR PART  
NUMBER 2150443-1

FOR REPLACEMENT PARTS FOR APPLICATOR 1339527  
REFER TO ADDITIONAL PAGE(S). SPARE PARTS KIT (IF LISTED)  
WILL REMAIN AVAILABLE.

THE REPLACEMENT OCEAN STYLE APPLICATOR HAS THE  
SAME TERMINATOR/PRESS INTERFACE AS APPLICATOR  
1339527

THIS DRAWING IS A CONTROLLED DOCUMENT.		DWN	GOPALAKRISHNA HV			
		CHK	RAGHAVENDRA			
		APVD	RAGHAVENDRA			
		PRODUCT SPEC				
		APPLICATION SPEC				
		WEIGHT				
		CUSTOMER DRAWING		SCALE	SHEET 1 OF 2	
				REV	D1	

TE Connectivity			
END FEED HD-I APPLICATOR			
SIZE	CAGE CODE	DRAWING NO	RESTRICTED TO
A3		©- 1339527	

DIMENSIONS:	TOLERANCES UNLESS OTHERWISE SPECIFIED:
	0 PLC ± 1 PLC ± 2 PLC ± 3 PLC ± 4 PLC ± ANGLES ± FINISH
MATERIAL	

THIS DRAWING IS UNPUBLISHED.

DRAWING MADE IN THIRD ANGLE PROJECTION

PART NUMBER	REV	FIRST USED	TERMINATOR	FEED TYPE	DESCRIPTION
1339527-1	D	-	BENCH & LEADMAKER	MECH POST FEED	HD-1 APPLICATOR
7-1339527-1	D	-	BENCH & LEADMAKER	MECH POST FEED	-1 AND SPARE PARTS
7-1339527-7	A	-	-	-	SPARE PARTS KIT



CRIMP DATA AMP TERMINAL AMP CRIMP SPECS

TERMINAL NAME: .250 SRS FASTIN-FASTON REC.

CRIMP	SIZE	TYPE	RANGE	
WIRE	3.30 [130 IN]	F	> 2.50mm <sup>2</sup> - 4.00mm <sup>2</sup>	
INSUL	4.57 [180 IN]	0V	3.30-4.50 [130-177 IN]	
WIRE STRIP LENGTH			APPL INSTRUCTION	
5.80-6.60 [228-.260 IN]			408-8323	
TERMINAL	-	-		FEED
APPL SPEC	114-3118	-		

TERMINALS APPLIED

[illegible]

WIRE SIZE mm <sup>2</sup> AWG		CRIMP HEIGHT		PIN PN & LENGTH [IN]
4.00mm <sup>2</sup>		2.38 ±0.05 [.094 ±.002 IN]		5-354778-7 [.2780:]
3.50mm <sup>2</sup>		2.27 ±0.05 [.089 ±.002 IN]		6-354778-7 [.2830:]
3mm <sup>2</sup> OR 2X 1.5mm <sup>2</sup>		2.16 ±0.05 [.085 ±.002 IN]		7-354778-5 [.2870:]
2.50mm <sup>2</sup>		2.06 ±0.05 [.081 ±.002 IN]		8-354778-3 [.2910:]

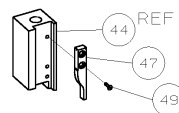
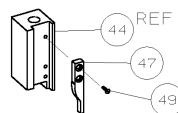


1. RECOMMENDED SPARE PARTS.
2. GREASE RAM, CAM, CAM FOLLOWER AND FEED ROD LIGHTLY.
3. LUBRICATE DAILY PER THE APPLICATOR INSTRUCTION SHEET SUPPLIED WITH THE APPLICATOR.
4. CUT TO LENGTH AT ASSEMBLY.

## VIEW B ROTATED 180°

POST-FEED 40 mm STROKE

POST-FEED 30 mm STROKE



LOC

DIST

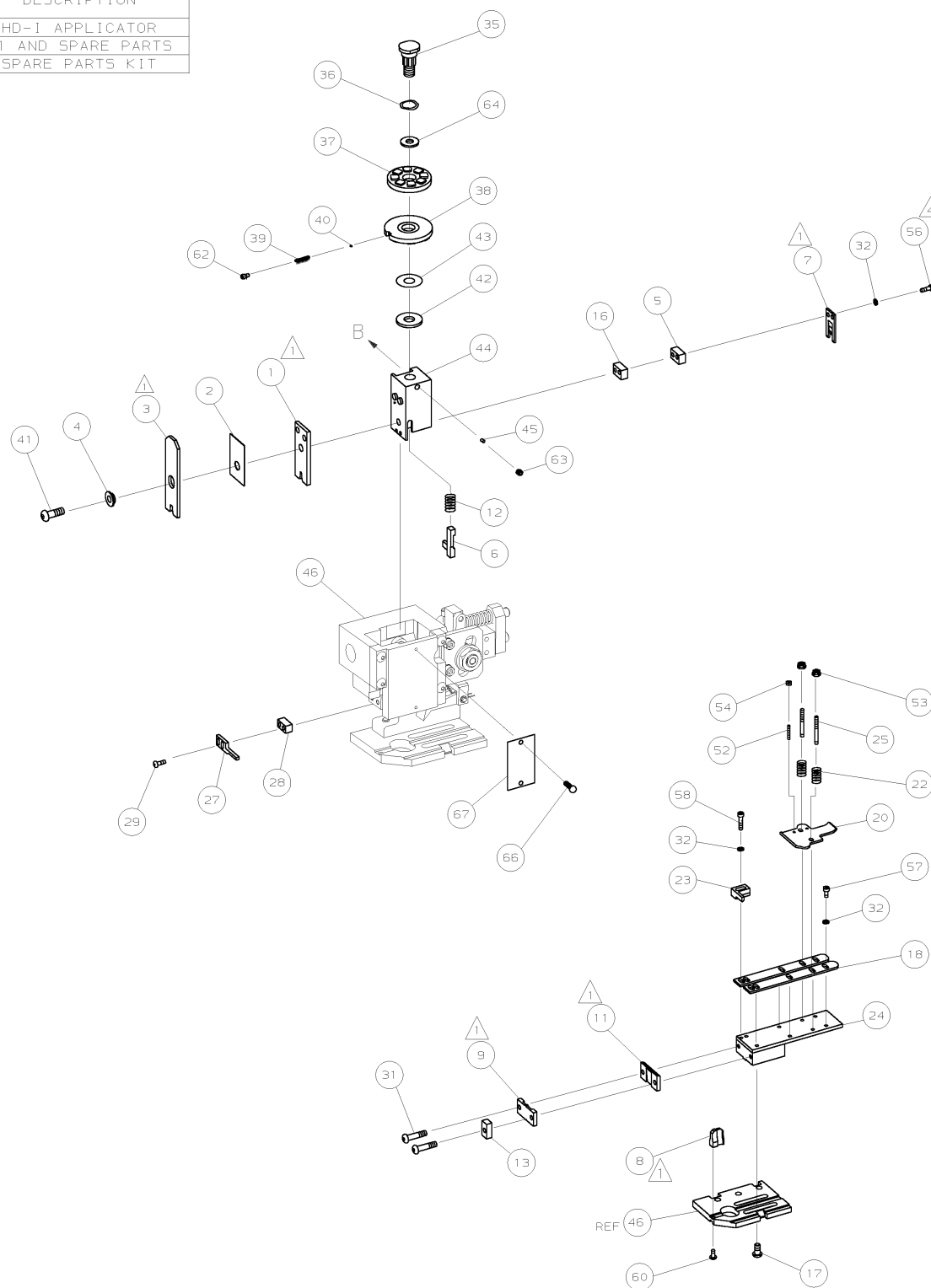
66

LEADMAKER OR BENCH G

K TERMINATOR BENCH MACHINE

AMP 1756 REV 3-92 30-JUN-05 13:46:40 us024474

---



		D	ECR-05-005992	RK	JUN06
		C	SEE ECN 015A-0784-01	MC	SEP06
		B	0150-0595-01	CE	JUN06
		A	SEE ECN 015A-0127-01	LJL	FEB06
P E I T R			REVISION RECORD	APP	DATE

[illegible]