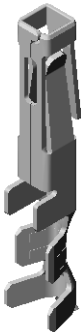


ALL DIMENSIONS ARE REFERENCE
(SEE XC-169-XX-XX-X-XX FOR CONTROLLING PRINT)



CC69X-XXXX-01-X-XX

SUPPLIED
-L: LOOSE
-R: REEL

LEAD STYLE
-2024 (20-24 AWG)
-1620 (16-20 AWG)
**-2426 (24-26 AWG)(PTFE)

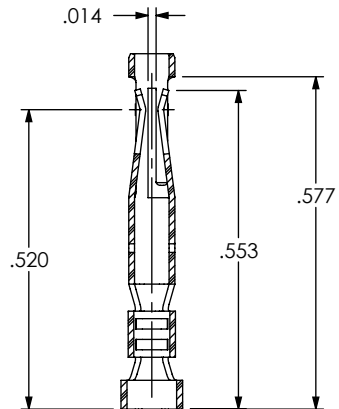
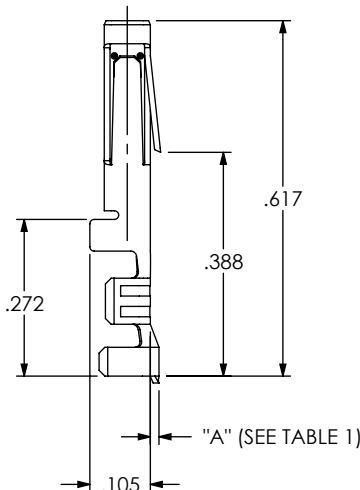
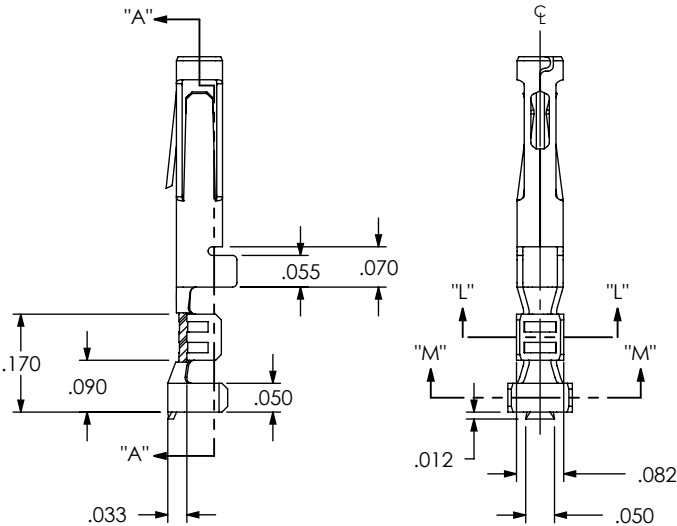
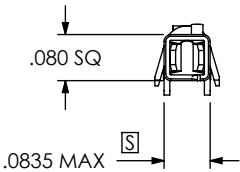
OPTION
(INSULATION THICKNESS)
-01

MATERIAL SPECIFICATION
-SP: STANDARD POWER (PHOS
BRONZE, 510 SPRING TEMPER
-HP: HIGH POWER (HIGH COPPER
ALLOY 197, EXTRA SPRING TEMPER)
(SEE NOTE 1)

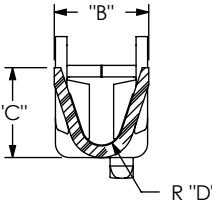
PLATING
-T: TIN

(SEE PP-C-169-XX-XX-X FOR PLATING INSTRUCTIONS)

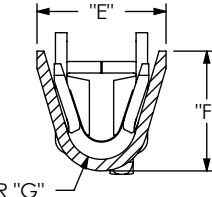
**= NOT RELEASED FOR PRODUCTION



SECTION "A"- "A"



SECTION "L"- "L"
SCALE 10 : 1



SECTION "M"- "M"
SCALE 10 : 1

NOTE:
1. AVAILABLE FOR EXISTING CUSTOMERS ONLY.
DO NOT DESIGN IN AS OF REVISION P.

UNLESS OTHERWISE SPECIFIED,
DIMENSIONS ARE IN INCHES.
TOLERANCES ARE:
DECIMALS ANGLES
.XX: ±
.XXX: ±
.XXXX: ±

PROPRIETARY NOTE
THIS DOCUMENT CONTAINS INFORMATION
CONFIDENTIAL AND PROPRIETARY TO
SAMTEC, INC. AND SHALL NOT BE REPRODUCED
OR TRANSFERRED TO OTHER DOCUMENTS OR
DISCLOSED TO OTHERS OR USED FOR ANY
PURPOSE OTHER THAN THAT WHICH IT WAS
OBTAINED WITHOUT THE EXPRESSED WRITTEN
CONSENT OF SAMTEC, INC.



520 PARK EAST BLVD, NEW ALBANY, IN 47150
PHONE: 812-944-6733 FAX: 812-948-5047
e-Mail: info@SAMTEC.com code: 55322

MATERIAL: DO NOT SCALE DRAWING SHEET SCALE: 3:1
PHOS BRONZE, 510 SPRING TEMPER, TENSILE 95-110 KSI (-SP) or
HIGH COPPER ALLOY C197-2, EXTRA SPRING TEMPER

THICKNESS: .0100

DESCRIPTION:
.165 IPBD CONTACT

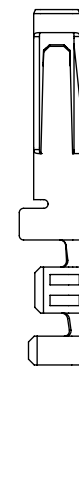
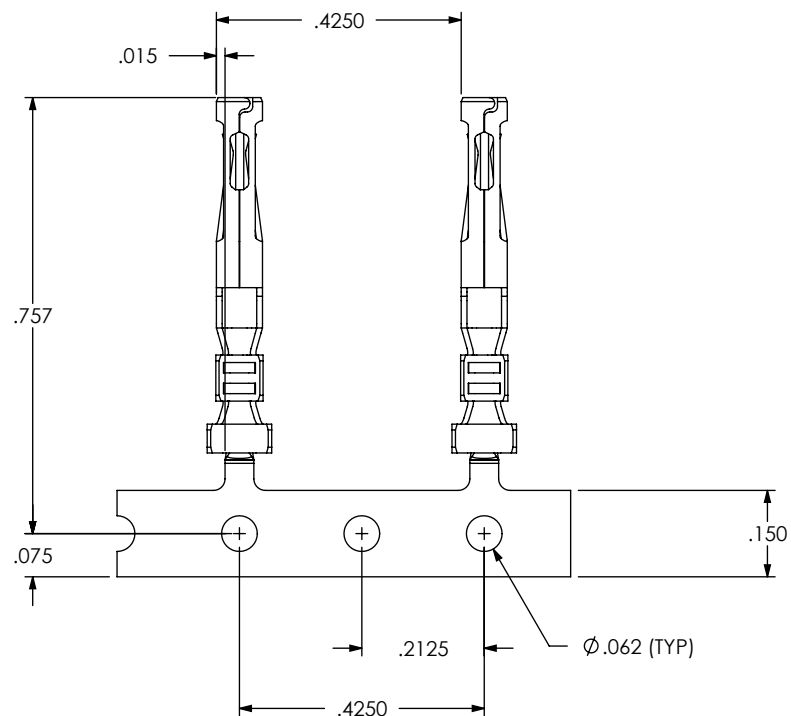
DWG. NO.
CC69X-XXXX-01-X-XX

BY: BRATCHER 10/7/04 SHEET 1 OF 2

TABLE 1									
STYLE	"A"	"B"	"C"	"D"	"E"	"F"	"G"	"H"	"J"
-2024	.015	.082	.078	.018	.112	.104	.030	.005	30
-1620	.025	.110	.115	.025	.184	.168	.055	.005	30
** -2426	.015	.082	.078	.018	.080	.067	.020	.005	30

(**= NOT RELEASED FOR PRODUCTION)

CARRIER SPECIFICATIONS

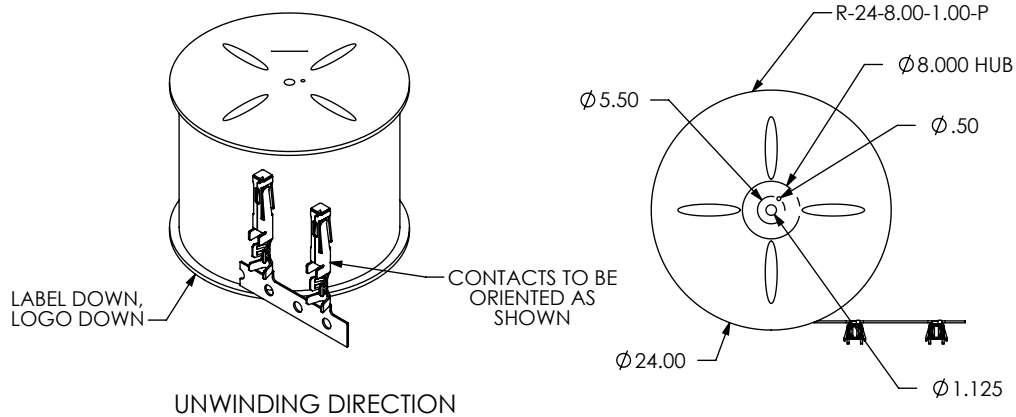


REEL SPECIFICATIONS

PLATED C-169 PARTS ARE TO BE UNWOUND,
THEN REWOUND AND COUNTED, 4,000 +100/-0 PCS POSITIONED
AS SHOWN ON SAMTEC REEL WITH VIEWPORTS,
LABELED CC69 WITH APPROPRIATE PLATE
CALL OUT AND LABEL PLACED AS SHOWN

*MAXIMUM No. OF SPLICES PER REEL: 2. SPLICES ARE NOT TO BE CONNECTED.
NUMBER OF SPLICES TO BE MARKED ON EACH REEL.

*REELED PARTS TO BE INTERLEAVED WITH PAPER BETWEEN EACH LAYER OF PARTS.
ONE SPLICE IN INTERLEAF ALLOWED PER REEL. SECURELY CONNECT INTERLEAF SPLICE.
OUTER WRAP SHALL RECEIVE RB-24-1.00-P PROTECTIVE REEL BAND.



UNWINDING DIRECTION

PROPRIETARY NOTE

THIS DOCUMENT CONTAINS INFORMATION
CONFIDENTIAL AND PROPRIETARY TO
SAMTEC, INC. AND SHALL NOT BE REPRODUCED
OR TRANSFERRED TO OTHER DOCUMENTS OR
DISCLOSED TO OTHERS OR USED FOR ANY
PURPOSE OTHER THAN THAT WHICH IT WAS
OBTAINED WITHOUT THE EXPRESSED WRITTEN
CONSENT OF SAMTEC, INC.

DO NOT SCALE DRAWING

SHEET SCALE: 3:1

samtec

520 PARK EAST BLVD, NEW ALBANY, IN 47150
PHONE: 812-944-6733 FAX: 812-948-5047
e-Mail: info@SAMTEC.com code: 55322

DESCRIPTION:

.165 IPBD CONTACT

DWG. NO.

CC69X-XXXX-01-X-XX

BY: BRATCHER 10/7/04

SHEET 2 OF 2