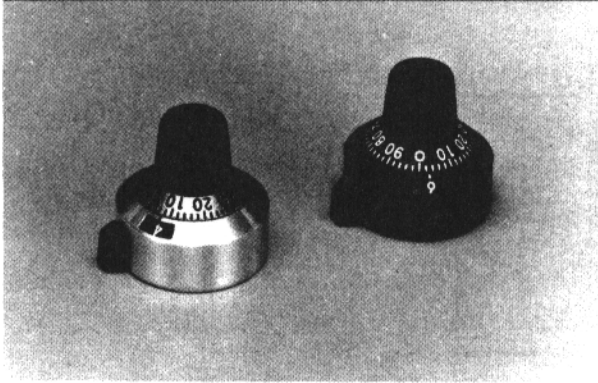


Series 316

7/8 in. Diameter, 15 Turn Concentric Scale Digital Readout Dial



Description

The 316 Dial is a high quality, lower cost version of our 400 series. Possessing many of the same features, with the addition of a convenient digital window. The 316 series is an excellent complement to our 73JA, 73JB, and 62JA potentiometers.

Features

- Low cost
- Large, easy to read numerals
- Brake lever for higher torque
- Precision mechanism with quality feel

Series 316 Specifications

Readout and Operation

Unit shall register a total count of 15 turns. The number in the window (0 thru 14) indicates completed number of turns of the drive sleeve. Graduated circular dial indicates the percent of a partial turn of the drive sleeve.

Transfer Point

The number in center of window shall change as graduated dial rotates between 94 and 0.

Rotation

Readout shall increase with clockwise and decrease with counterclockwise rotation.

Specifications continued, next column

Specifications continued

Brake Lever Degrees

1st Position (15° movement of brake lever) operates a high torque system for fine adjustment;
2nd Position (15° additional movement of brake lever) actuates brake.

Accuracy

Backlash shall be zero between graduated drive and drive sleeve.

Mounting

Install mounting bracket between panel and panel nut. Clarodial shall mount directly to shaft with No. 2-56 spline socket set screw, located adjacent to No. 50 on graduated dial.

Numeral Size

0.075 in. (1.905 mm) high

Graduation Size

Numeral graduations .045 in. long (1.14 mm)
Intermediate graduations .030 in. long (0.76 mm)

Finish

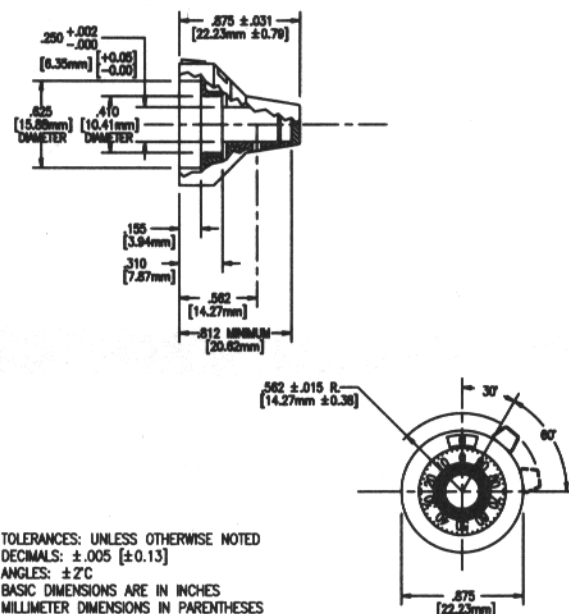
Exposed metal parts: brushed metal finish.
Turning knob and brake lever knob: black plastic.
Numerals: graduated dial - black; turns counter - white on black background.

Weight

0.7 oz. max. (19.84 gm)

Figure 1

Series 316 Dimensions



Series 316 How to Order

Catalog Number	Description
316-11	Clear anodized with brake lever.
316-12	Black anodized with brake lever.