

Type 470 Series



For applications that demand a durable, miniature trimming potentiometer, this military style offers quality at the right price. Cermet element technology ensures stability and performance in these 6mm diameter components. All units are fully sealed to withstand immersion in normal board washing solvents.

Key Features

- Stable High Resolution Cermet Element
- 0.5 Watt Rating at 85°C
- Space-Saving Device
- Proven Reliability
- -55°C to +125°C Temperature Range
- Sealed to Withstand Wave Soldering
- Sealed to Withstand Immersion Cleaning

Characteristics - Electrical

Resistance Range:	100R to 1M
Resistance Values:	1, 2 and 5 in each decade
Resistance Tolerance:	± 10%
End Resistance:	2 Ohms or 1%, whichever is greater
Slider Current:	50 mA or within power rating, Max.
Power Rating:	0.5W at 85°C derating to zero at 125°C
Isolation Voltage:	300 V dc or ac peak
Limiting Element Voltage:	200 V dc or ac RMS, Max.
Breakdown Voltage:	600 V ac for one minute
Insulation Resistance:	1000 M Ohms at 500 V dc, Min.
Resolution:	Essentially Infinite
Rotational Noise (CRV):	3 Ohms or 3 %, whichever is greater
Temperature Coefficient:	± 250 ppm/°C
Electrical Adjustment:	240° Nominal

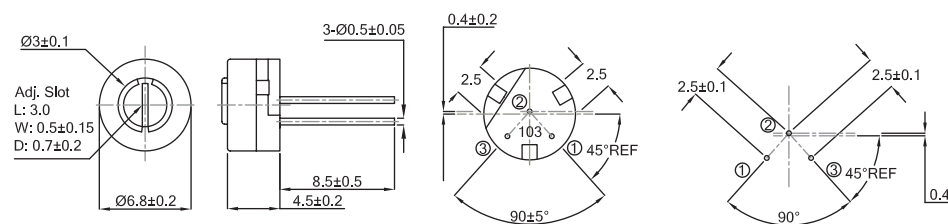
Characteristics - Mechanical

End Stop:	40 mNm Min.
Starting Torque:	30 mNm Max.
Mechanical Adjustment:	260° Nominal
Weight:	0.57 gm Max.

Characteristics - Environmental

Temperature Range:	-55°C to +125°C
Thermal Shock:	5 Cycles -55°C to +150°C
Bump Severity:	4000 Bumps; 40G
Vibration Severity:	10 - 500Hz; 30 G $\Delta R < 1\%$
Rotational Life:	200 Cycles
Load Life at 70°C:	1000 Hours at 0.5 W
Sealing:	Sealed for immersion & board washing processes
Climatic Category:	55/125/21

Dimensions



How to Order

470	104	K
Common Part	Resistance Value	Tolerance
470	The first two digits are significant figures of resistance value and the third denotes the number of zeros following. e.g. 100R: 101 1K: 102 10K: 103 100K: 104	K - 10 %

Mouser Electronics

Authorized Distributor

Click to View Pricing, Inventory, Delivery & Lifecycle Information:

[TE Connectivity:](#)

[404806347007](#)