

# PM Series

## 5 Tumbler Miniature Snap-in Switchlocks

### Features/Benefits

- International agency listings
- Snap-in mounting
- Wire lead terminations available
- 5 Tumbler lock with positive detent

### Typical Applications

- Computers
- Point-of-sale terminals
- Marine equipment



Models Available

### Specifications

CONTACT RATING: Q contact material: 4 AMPS @ 125 V AC or 28 V DC; 2 AMPS @ 250 V AC (UL/CSA); 4 AMPS @ 125 V AC, 2 AMPS @ 250 V AC, T65 (VDE). See page L-24 for additional ratings.

ELECTRICAL LIFE: 10,000 make-and-break cycles at full load.

CONTACT RESISTANCE: Below 10 m  $\Omega$  typ. initial @ 2-4 V DC, 100 mA, for both silver and gold plated contacts.

INSULATION RESISTANCE: 10<sup>9</sup>  $\Omega$  min.

DIELECTRIC STRENGTH: 1,000 Vrms min. @ sea level.

INDEXING: 90°:2 positions.

### Materials

LOCK: 6/6 nylon with matte finish (UL 94V-2), color black, 5 tumbler, single bitted lock with integral detent mechanism.

KEYS: Two nickel plated brass keys with black plastic head, other colors available.

SWITCH HOUSING: 6/6 nylon (UL 94V-2).

CONTACTS & TERMINALS: Q contact material: Copper, silver plated. See page L-24 for additional contact materials.

**NOTE:** Any models supplied with Q or B contact material are RoHS compliant.

**NOTE:** Specifications and materials listed above are for switchlocks with standard options. For information on specific and custom switchlocks, consult Customer Service Center.

### Build-A-Switch

To order, simply select desired option from each category and place in the appropriate box. Available options are shown and described on pages L-32 and L-33. For additional options not shown in catalog, consult Customer Service Center.

Switch and lock Function

PM0613 SP, 90°, Index, keypull pos. 1

PM061U SP, 90° Index, keypull pos. 1 & 3

Keying

E Two nickel plated brass keys with insert molded plastic head

Lock Type

B 5 Tumbler lock with detent

Lock Finish

M Plastic lock with matte finish

Terminations

05 Quick connect

WC Wire lead

Lock Style

K Cone shaped facing

Contact Material

Q Silver

B Gold

Lock Color

2 Black

Key Color

2 Black

Switch and lock Function

Keying

Lock Type

Lock Finish

Terminations

Lock Style

Contact Material

Lock Color

Key Color

Switchlock

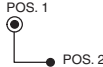
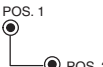


Dimensions are shown: Inch (mm)  
Specifications and dimensions subject to change

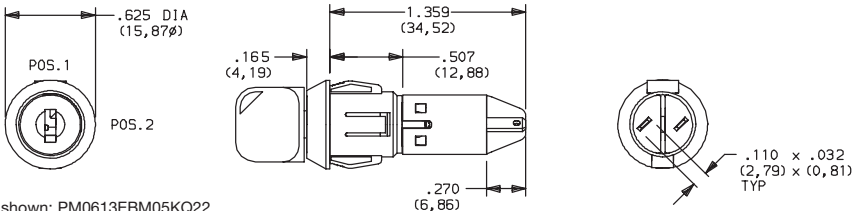
PM Series  
5 Tumbler Miniature Snap-in Switchlocks

SWITCH AND LOCK FUNCTION



NO. POLES	MODEL NO.	SWITCH FUNCTION		KEY PULL POSITIONS	LOCK CONFIGURATION	INDEXING
		POS. 1	POS. 2			
SP	PM0613	OFF	ON	Position 1		90°
	PM061U			Positions 1 & 2		

SP



Part number shown: PM0613EBM05KQ22

All models with all options when ordered with 'Q' contact material.

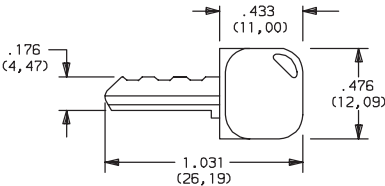
LEGEND

- = Detent Position (90°)
- ⊙ = Key pull possible in these positions.
- ⊙ = Stop Positions

KEYING



**E** TWO NICKEL PLATED BRASS KEYS WITH INSERT MOLDED PLASTIC HEAD

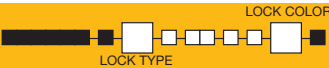


Key part number: 334C1004102

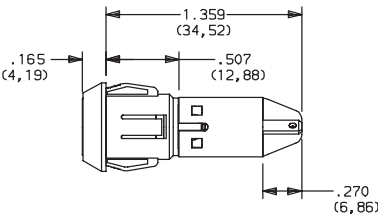
OPTION CODE	KEY COLOR
2	BLACK

**NOTE:** Molded plastic head color is black, standard. For more than one key code, replacement keys, or other special features, consult Customer Service Center.

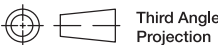
LOCK TYPE



**B** 5 TUMBLER LOCK WITH DETENT



OPTION CODE	LOCK COLOR
2	BLACK



Third Angle Projection

Dimensions are shown: Inch (mm)  
Specifications and dimensions subject to change

www.ck-components.com



Switchlock

# PM Series

## 5 Tumbler Miniature Snap-in Switchlocks

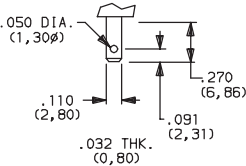
### LOCK FINISH

**M** PLASTIC LOCK WITH MATTE FINISH

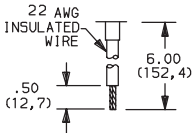


### TERMINATIONS

**05** QUICK CONNECT



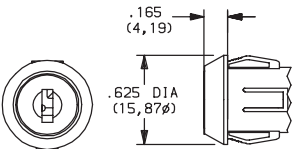
**WC** WIRE LEAD



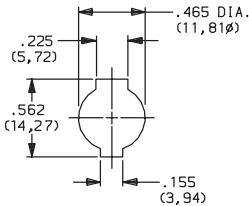
UL style 1015.  
Black wire standard, other colors and lengths available,  
consult Customer Service Center.

### LOCK STYLE

**K** CONE SHAPED FACING



**PANEL MOUNTING**



Panel thickness:  
.050-.080 (1,27-2,03)

### CONTACT MATERIAL

OPTION CODE	RoHS COMPLIANT*	RoHS COMPATIBLE*	CONTACT AND TERMINAL MATERIAL	RATING	
<b>Q</b>	YES	YES	SILVER <sup>2</sup>	POWER	4 AMPS @ 125 V AC or 28 V DC; 2 AMPS @ 250 V AC (UL/CSA). 4 AMPS @ 125 V AC; or 2 AMPS @ 250 V AC; T65 (VDE).
<b>B</b>	YES	YES	GOLD <sup>1</sup>	LOW LEVEL/DRY CIRCUIT	0.4 VA MAX. @ 20 V AC or DC MAX.

\* Note: See Technical Data section of this catalog for RoHS compliant and compatible definitions and specifications.

<sup>1</sup> CONTACTS & TERMINALS: Copper, with gold plate over nickel plate.

All models



with all options when ordered with 'Q' contact material.

<sup>2</sup> CONTACTS & TERMINALS: Copper, silver plated (standard with all termination options).

### AVAILABLE HARDWARE



Key Code: 041

**PART NO.** (ONE KEY)

**617D1004102** BLACK

**Material:** Brass  
**Finish:** Nickel plate  
6/6 Nylon insert molded head



Third Angle  
Projection

Dimensions are shown: Inch (mm)  
Specifications and dimensions subject to change

