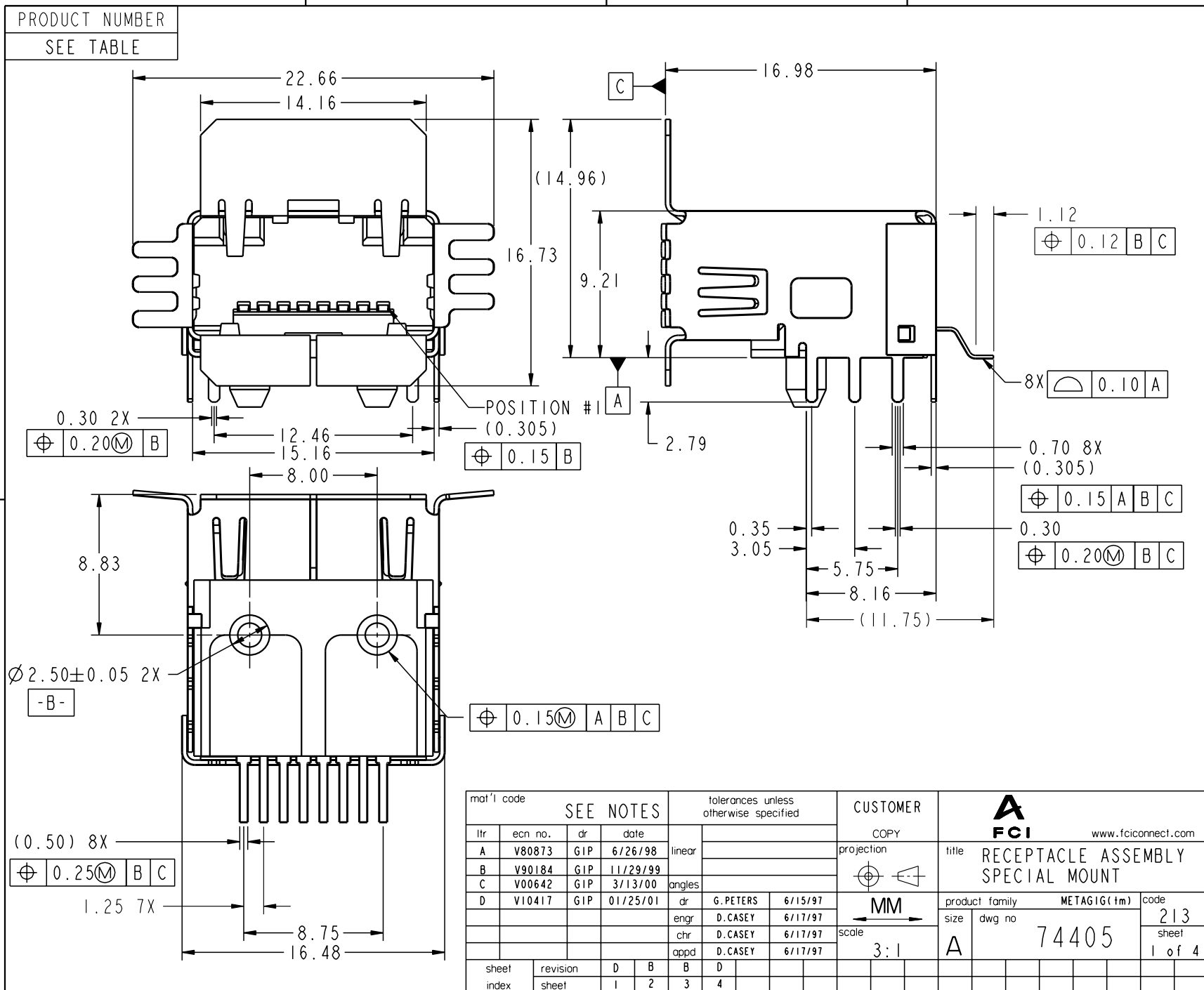


All rights strictly reserved. Reproduction or issue to third parties in any form whatever is not permitted without written authority from the proprietor. Property of FCI. Copyright FCI.

AD



Pro/E

cage code	22526
-----------	-------

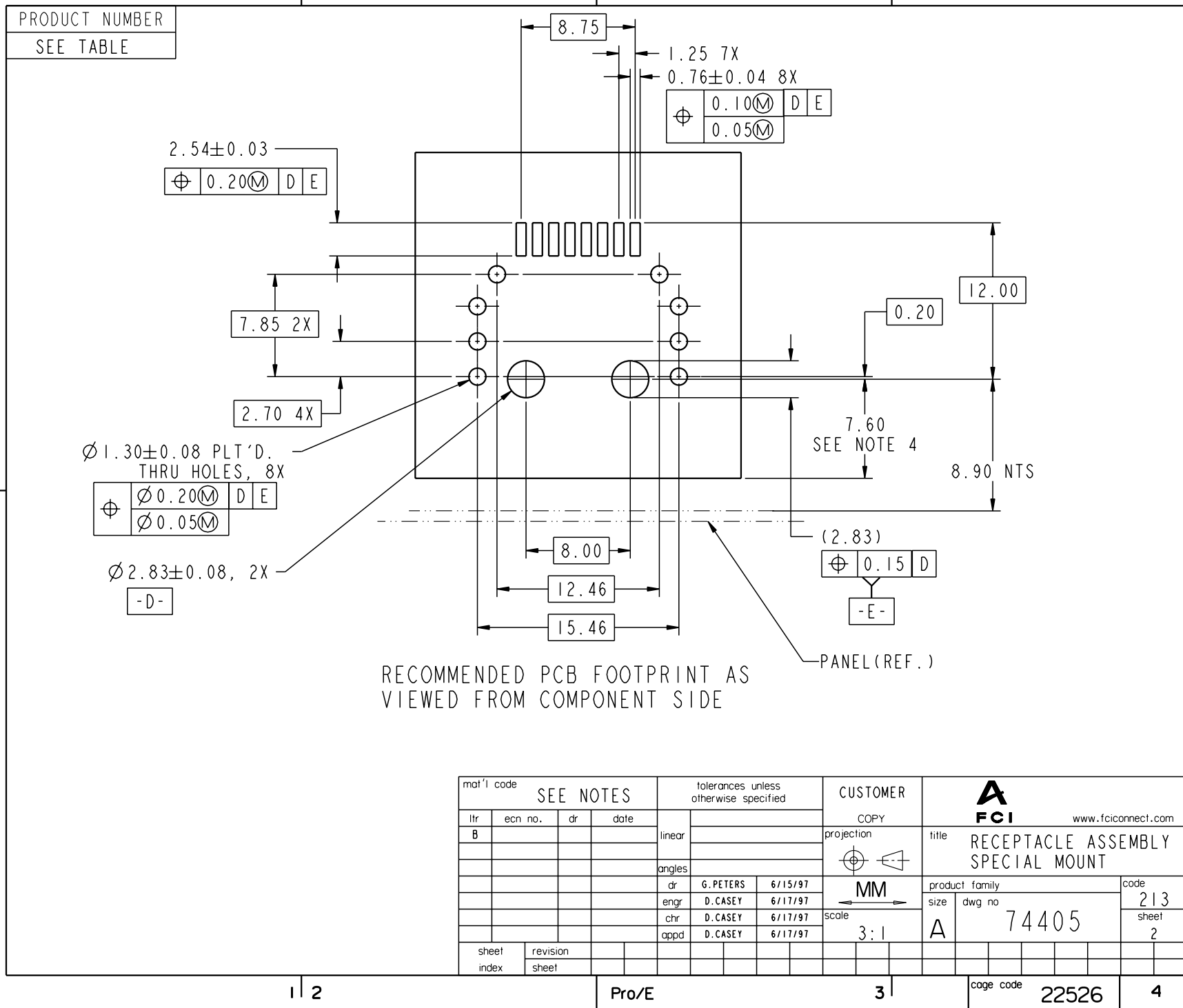
PDM: Rev:D

STATUS: **Released**

Printed: Dec 09, 2007

All rights strictly reserved. Reproduction or issue to third parties in any form whatever is not permitted without written authority from the proprietor. Property of FCI. Copyright FCI.

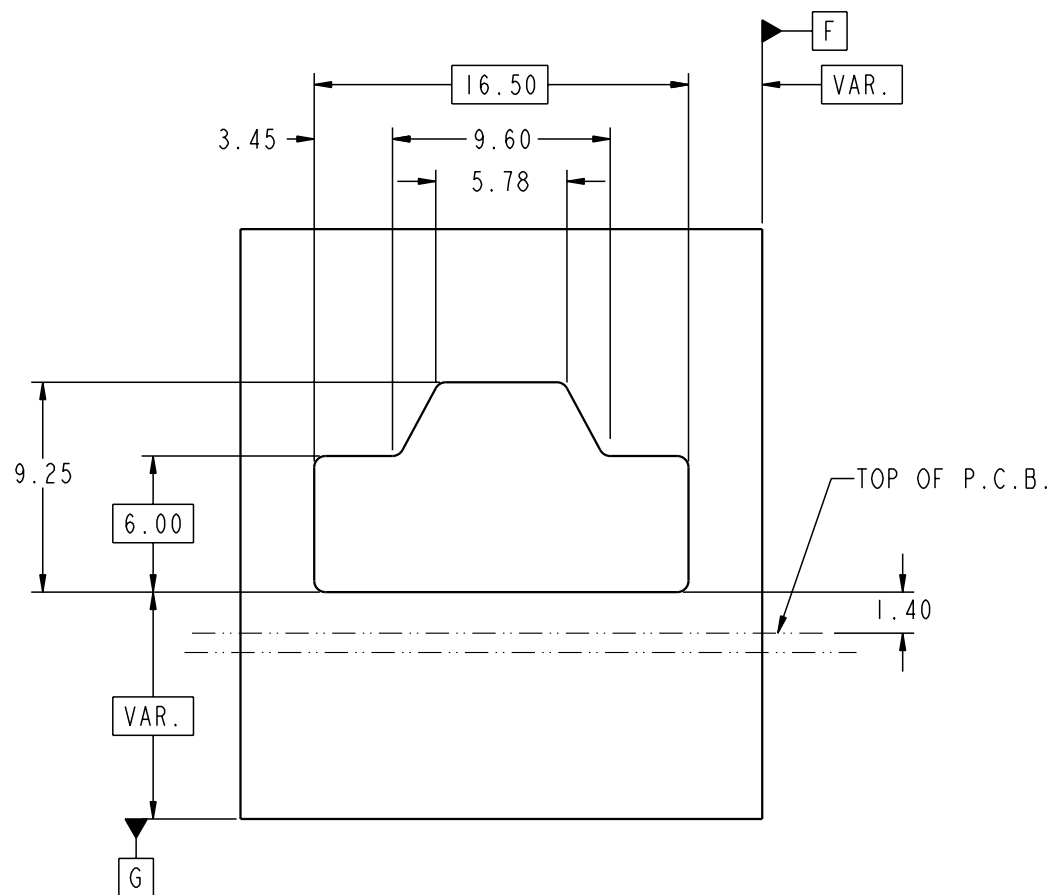
Tous droits strictement reserves. Reproduction ou communication a des tiers interdite sous quelque forme que ce soit sans autorisation ecrite du proprietaire. Propriete de c FCI. Droits de reproduction FCI.




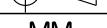
All rights strictly reserved. Reproduction or issue to third parties in any form whatever is not permitted without written authority from the proprietor. Property of FCI. Copyright FCI.

All rights strictly reserved. Reproduction or issue to third parties in any form whatever is not permitted without written authority from the proprietor.
Property of FCI. Copyright FCI.

PRODUCT NUMBER
SEE TABLE



RECOMMENDED BULKHEAD OPENING

mot'l code				SEE NOTES				tolerances unless otherwise specified				CUSTOMER				<div><div>A</div><div>FCI</div><div>www.fciconnect.com</div></div>				
ltr	ecr no.	dr	date	linear					COPY				<div><div>projection</div><div></div><div>title RECEPTACLE ASSEMBLY SPECIAL MOUNT</div></div>							
B																				
				angles					<div><div></div><div>MM</div><div>scale 3:1</div></div>				product family Metagig				code 213			
													size A				dwg no 74405			
				dr	G. PETERS	6/15/97														
				enrg	D. CASEY	6/17/97														
				chr	D. CASEY	6/17/97														
				appd	D. CASEY	6/17/97														
sheet index		revision sheet																		
Pro/E				3								cage code 22526				4				


PDM: Rev:D


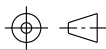
STATUS: **Released** Printed: Dec 09, 2007

Printed: Dec 09, 2007

PRODUCT NUMBER	DESCRIPTION	PACKAGING
74405-001	RECPT. ASSY w/15 GXT PLT'D CONTACTS, HSG. COLOR BLACK	IN TRAYS
74405-002	RECPT ASSY w/30 Au PLT'D CONTACTS, HSG. COLOR NATURAL	IN TRAYS
74405-003	RECPT. ASSY w/15GXT PLT'D CONTACTS, HSG. COLOR BLACK	TAPE & REEL
74405-004	RECPT. ASSY w/30Au PLT'D CONTACTS, HSG. COLOR NATURAL	TAPE & REEL

NOTES:

- MATERIAL: CONTACTS - BeCu
SHIELD - Phos Bronze
HOUSING - UL 94 V-0 RATED HIGH TEMP THERMOPLASTIC
- PLATING: CONTACTS - NOBLE METAL PLATING IN CONTACT AREA
SHIELD - TIN LEAD
- UNLESS OTHERWISE SPECIFIED:
ALL DIMENSIONS AND TOLERANCES ARE IN ACCORDANCE WITH ASME Y14.5M, 1994.
 0.25
- DISTANCE MAY VARY DUE TO VARIOUS CUSTOMER APPLICATIONS.
- DIMENSIONS SHOWN IN PARANTHESE ARE "REFERENCE DIMENSIONS" PER ASME Y14.5M, 1994 SPECIFICATION.
- CONNECTOR WILL ACCOMMODATE P.C.B.'s TO 3.00 MAX. THICKNESS.
- CONNECTOR COMPLIES WITH IEC 61076-3-103(DRAFT).
- MOUNTING OF THIS CONNECTOR TO A PANEL OR BULKHEAD WILL REQUIRE MOUNTING BRACKET 73593-001.

mat'l code				SEE NOTES				tolerances unless otherwise specified				CUSTOMER				 www.fciconnect.com			
lfr		ecr no.		dr		date		linear		projection		COPY		title		RECEPTACLE ASSEMBLY SPECIAL MOUNT			
D																			
								angles											
								dr		G.PETERS		6/15/97		product family		code			
								enrg		D.CASEY		6/17/97		size		213			
								chr		D.CASEY		6/17/97		dwg no		sheet			
								appd		D.CASEY		6/17/97		A		4			
sheet index		revision sheet																	