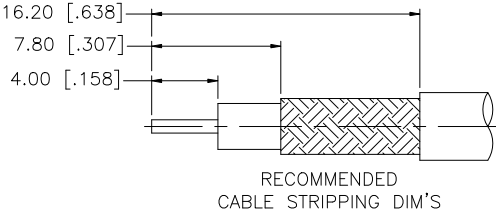
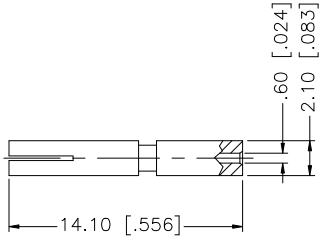
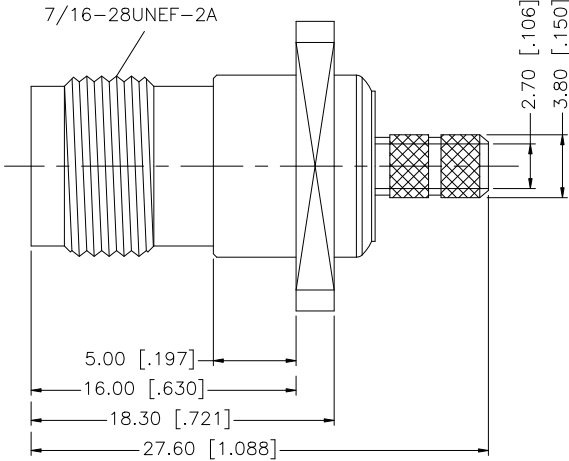
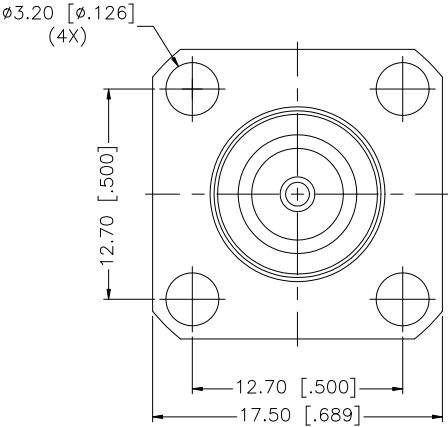


REV.	DATE	ECR NO.	DESCRIPTION
NC	09/29/04	—	INITIAL RELEASE
A	12/28/08	—	DESIGN CHANGE — ADD INSULATOR

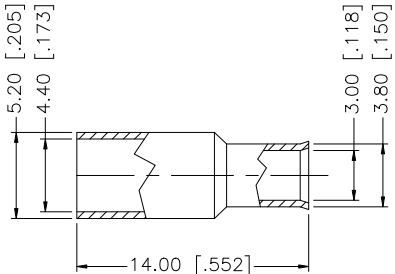
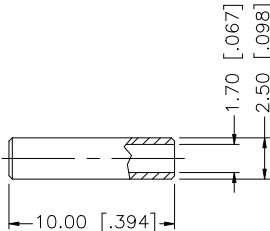
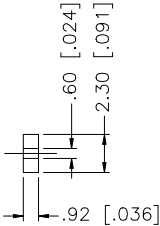


RECOMMENDED
CABLE STRIPPING DIM'S



NOTE:

1. CRIMPED FERRULE HEX CRIMP SIZE .178" [4.52]
2. CRIMPED CONTACT PIN HEX CRIMP SIZE .068" [1.73]



8					<p>UNLESS OTHERWISE SPECIFIED DIMENSIONS ARE IN MILLIMETERS. DIMENSIONS IN [] ARE IN INCHES AND FOR CUSTOMER REFERENCE ONLY.</p> <p>UNLESS OTHERWISE SPECIFIED TOLERANCES FOR MILLIMETERS ARE: 0.5 - 8mm ± 0.20mm 8 - 30mm ± 0.40mm 30 - 120mm ± 0.50mm</p> <p>UNLESS OTHERWISE SPECIFIED TOLERANCES FOR INCHES ARE: .020 - .315 = ± 0.007" .315 - 1.180 = ± 0.015" 1.180 - 4.724 = ± 0.020"</p>	APPROVALS	DATE	<h1>Amphenol Connex</h1>						
7						DRAWN	GRS							12/28/08
6	FERRULE	COPPER	NICKEL	1		CHECKED								
5	SLEEVE	BRASS	NICKEL	1		ISSUED								
4	INSULATOR	PTFE	NATURAL	1		SHEET	1 OF 1		PART NO. 122246					
3	CONTACT PIN	BER. COPPER	GOLD	1										
2	INSULATOR	DELTRIN	NATURAL	1	CAD FILE C:/122/122246.DWG			DWG. NO. 122246.DWG						
1	BODY	BRASS	NICKEL	1										
DESCRIPTION		MATERIAL	FINISH	QTY	DO NOT SCALE DRAWING	REV. A SIZE A SCALE NA								

Mouser Electronics

Authorized Distributor

Click to View Pricing, Inventory, Delivery & Lifecycle Information:

[Amphenol:](#)

[122246](#)