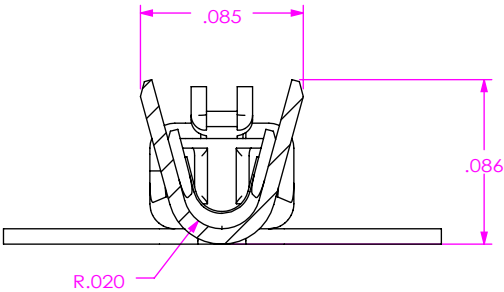


DO NOT
SCALE FROM
THIS PRINT

ALL DIMENSIONS ARE REFERENCE
(SEE C-383-XXXX-X FOR CONTROLLING PRINT)



SECTION 'C'-'C'
SCALE 10 : 1

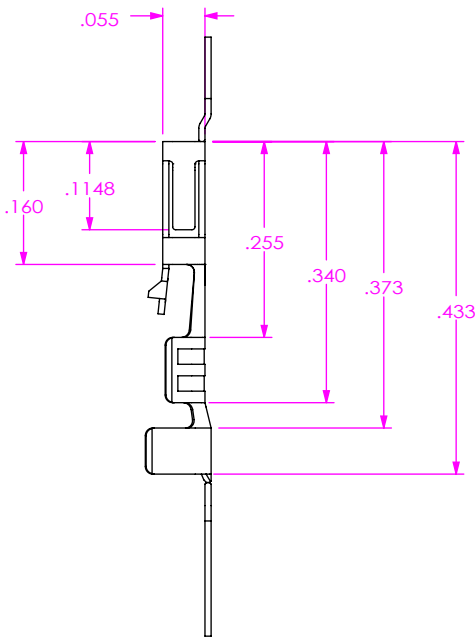
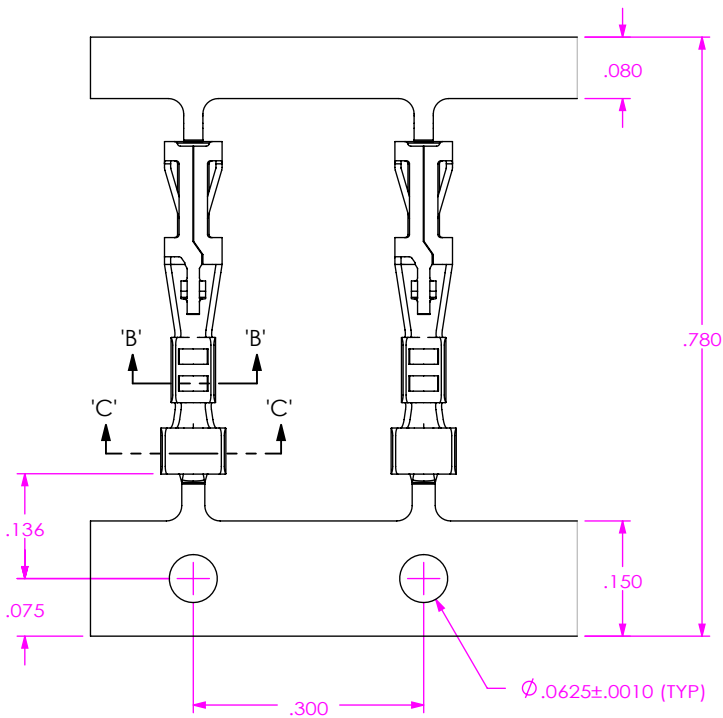
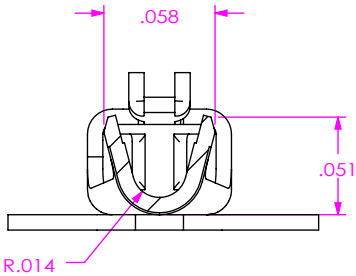
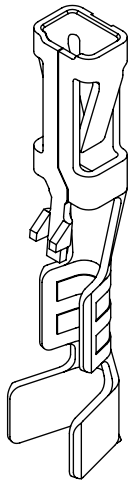


FIG 1
(CC83X-2426-X SHOWN)



SECTION 'B'-'B'
SCALE 10 : 1

CC83X-XXXX-X

OPTION
L: LOOSE
R: FULL REELS

LEAD STYLE
-2426: FOR 24, 26 AWG

PLATING
-F: 3µ" GOLD IN THE CONTACT AREA,
MATTE TIN TAIL
-L: 10µ" GOLD IN THE CONTACT AREA,
MATTE TIN TAIL

- NOTES:
1. REPRESENTS A CRITICAL DIMENSION.
 2. PLATED C-383 PARTS TO BE PULLED, PLATING OPTION CONFIRMED, POSITIONED AS SHOWN ON SAMTEC REEL WITH VIEWPORTS, LABELED CC83R WITH APPROPRIATE PLATING CALLOUT AND LABEL PLACED AS SHOWN.
 3. MAXIMUM NO OF SPLICES PER REEL: 2
 3. SPLICES ARE NOT TO BE CONNECTED.
 4. NUMBER OF SPLICES TO BE MARKED ON EACH REEL.
 5. REELED PARTS TO BE INTERLEAVED WITH PAPER BETWEEN EACH LAYER OF PARTS.
 6. ALLOWABLE INTERLEAF SPLICES PER REEL: 3
 7. SECURELY CONNECT INTERLEAF SPLICE.
 8. OUTER WRAP SHALL RECEIVE HMS1015C-16MM PROTECTIVE REEL BAND.
 9. DUE TO PLATING REQUIREMENTS CONTACT SAMPLES MAY BE REMOVED INTERMITTINGLY FROM THE CARRIER RESULTING IN SMALL GAPS BUT DOES NOT AFFECT FINAL COUNT.
 10. QTY PER REEL: 35,000 +700/-0 PCS

UNLESS OTHERWISE SPECIFIED,
DIMENSIONS ARE IN INCHES.
TOLERANCES ARE:

PROPRIETARY NOTE
THIS DOCUMENT CONTAINS CONFIDENTIAL AND
PROPRIETARY INFORMATION AND ALL DESIGN,
MANUFACTURING, REPRODUCTION, USE, PATENT RIGHTS
AND SALES RIGHTS ARE EXPRESSLY RESERVED BY SAMTEC,
INC. THIS DOCUMENT SHALL NOT BE DISCLOSED, IN WHOLE
OR PART, TO ANY UNAUTHORIZED PERSON OR ENTITY NOR
REPRODUCED, TRANSFERRED OR INCORPORATED IN ANY
OTHER PROJECT IN ANY MANNER WITHOUT THE EXPRESS
WRITTEN CONSENT OF SAMTEC, INC.

MATERIAL: DO NOT SCALE DRAWING
PHOSPHOR BRONZE

THICKNESS: .0080

F:\DWG\MISC\MKTG\CC83X-XXXX-X-MKT.SLDRW

SHEET SCALE: 6:1

DESCRIPTION:
.100 SMSX CONTACT

DWG. NO.
CC83X-XXXX-X

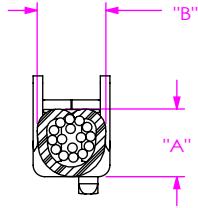
BY: VICKY Z 09/15/2011 SHEET 1 OF 2

samtec

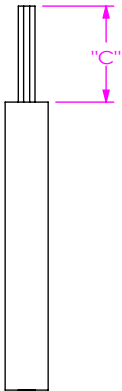
520 PARK EAST BLVD, NEW ALBANY, IN 47150
PHONE: 812-944-6733 FAX: 812-948-5047
e-Mail: info@SAMTEC.com code 55322

REVISION F

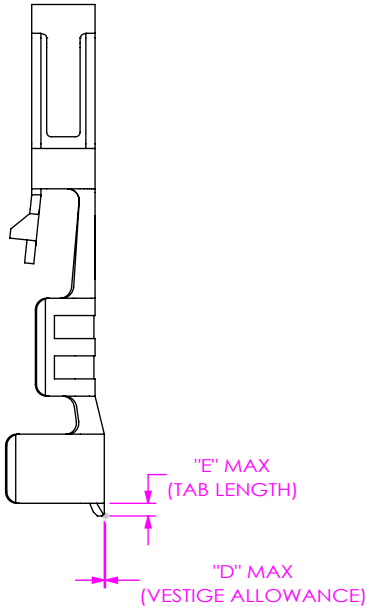
TABLE 1									
P/N	AWG	STRANDS/AWG	INSULATION OD	"A"	"B"	"C"	"D" MAX (VESTIGE LENGTH)	"E" MAX (TAB LENGTH)	PULL FORCE (LBS)
CC83X-2426-X	24	7/32	.0410-.0590	.0280	.0450	0.115	.0020	.0120	5
	26	7/34		.0270	.0450		.0020	.0120	3



WIRE CRIMP



INSULATION STRIP LENGTH



CARRIER TAB SPECIFICATION

REEL SPECIFICATIONS
(PLATED PARTS TO BE POSITIONED ON HARD BOARD REELS AS SHOWN)
(REELS TO HAVE VIEWPORTS)
(7,000 PARTS PER REEL)

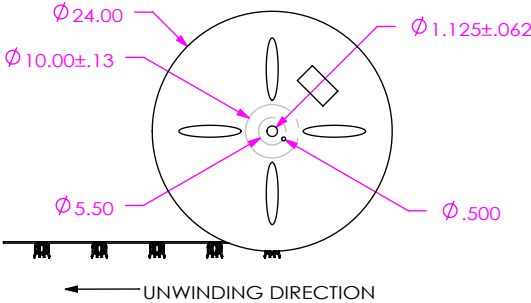
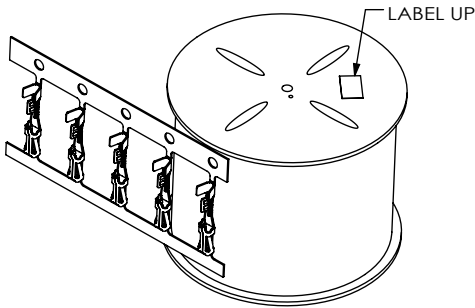


TABLE 2	
SUPPLIED	REEL PART NUMBER
-R	R-24-05.00-0.75-P

PROPRIETARY NOTE
THIS DOCUMENT CONTAINS CONFIDENTIAL AND PROPRIETARY INFORMATION AND ALL DESIGN, MANUFACTURING, REPRODUCTION, USE, PATENT RIGHTS AND SALES RIGHTS ARE EXPRESSLY RESERVED BY SAMTEC, INC. THIS DOCUMENT SHALL NOT BE DISCLOSED, IN WHOLE OR PART, TO ANY UNAUTHORIZED PERSON OR ENTITY NOR REPRODUCED, TRANSFERRED OR INCORPORATED IN ANY OTHER PROJECT IN ANY MANNER WITHOUT THE EXPRESS WRITTEN CONSENT OF SAMTEC, INC.

DO NOT SCALE DRAWING

SHEET SCALE: 3:1

samtec

520 PARK EAST BLVD, NEW ALBANY, IN 47150
PHONE: 812-944-6733 FAX: 812-948-5047
e-Mail: info@SAMTEC.com code 55322

DESCRIPTION:
.100 SMSX CONTACT

DWG. NO.
CC83X-XXXX-X

BY: VICKY Z 09/15/2011 SHEET 2 OF 2