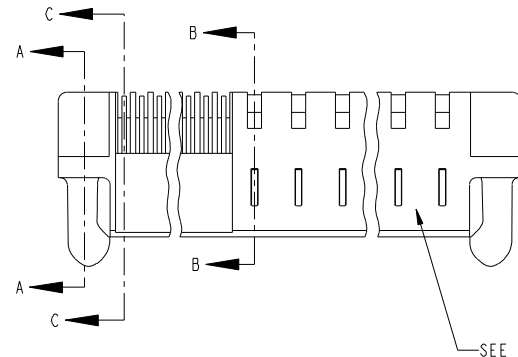


Tous droits strictement réservés. Reproduction ou communication à des tiers interdite sous quelque forme que ce soit sans autorisation écrite du propriétaire. Propriété de c FCI. Droits de reproduction FCI.

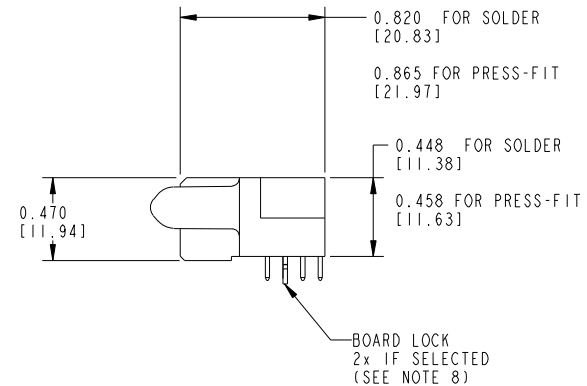
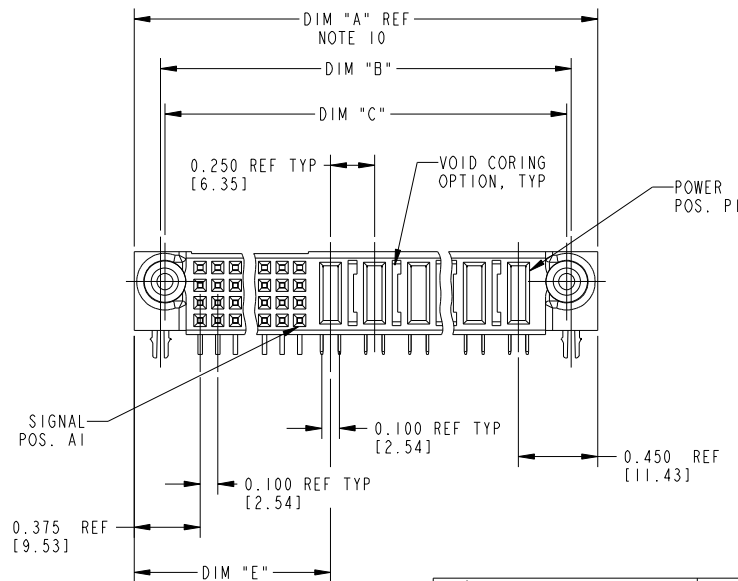


All rights strictly reserved. Reproduction or issue to third parties in any form whatever is not permitted without written authority from the proprietor. Property of FCI. Copyright FCI.

PRODUCT NUMBER
51762- ABBCCC00EF-- Note: ③
SEE NOTE 1



SEE NOTE 9



THIS FILE WAS ORIGINALLY CREATED IN THE PRO ENGINEER ENVIRONMENT AND ANY FUTURE REVISIONS TO THIS FILE MUST BE MADE IN THE PRO ENGINEER ENVIRONMENT

mat'l code				tolerances unless otherwise specified		CUSTOMER COPY		FCI	
ltr	ecn no.	dr	date	linear	.XX±.01/.X±.3	projection		www.fciconnect.com	
J	D605-0124	SJ	06/03/05		.XXX±.005/.XX±.13			title	
K	D608-0239	JC	09/11/08		.XXX±.0020/.XX±.051			RIGHT ANGLE RECEPTACLE w/GUIDE PIN	
				angles	0°±2°			POWER / SIGNAL	
				dr	D.BOGLE 05-18-99	INCH / MM		product family	
				enr	J. BROWN 05-18-99	scale		PWRBLADE	
				chr	J. BROWN 05-18-99	1:1		size	
				appd	J. BROWN 05-18-99			dwg no	
sheet index				revision sheet	K K K			51762	
					1 2 3			code	
								213	
								SHEET 1 OF 3	
								cage code	
								22526	

form no. 7530-001-103

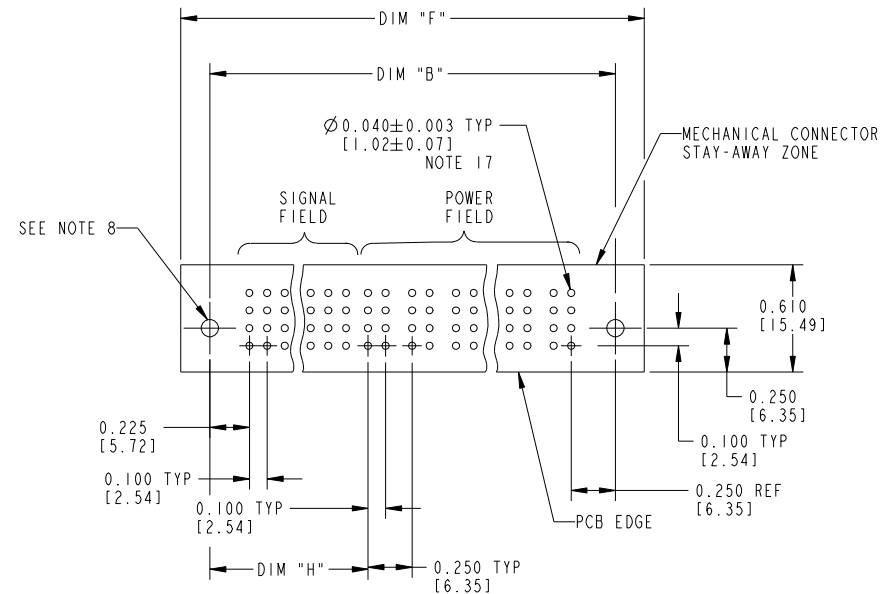
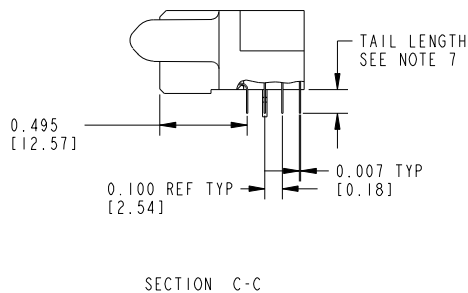
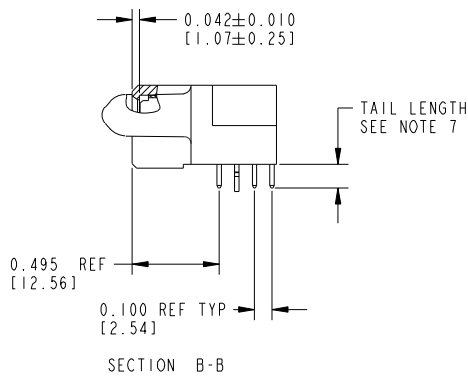
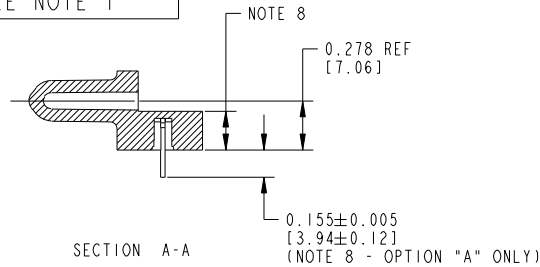
cage code 22526


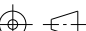
Tous droits strictement réservés. Reproduction ou communication à des tiers interdite sous quelque forme que ce soit sans autorisation écrite du propriétaire. Propriété de c FCI. Droits de reproduction FCI.



All rights strictly reserved. Reproduction or issue to third parties in any form whatever is not permitted without written authority from the proprietor. Property of FCI. Copyright FCI.

PRODUCT NUMBER
51762-ABBCCC00EF--
Note: ③
SEE NOTE 1



mat'l code				tolerances unless otherwise specified		CUSTOMER COPY		 www.fciconnect.com	
litr	ecn no.	dr	date	linear	.XX±.01/.X±.3	projection 	product family size dwg no A	RIGHT ANGLE RECEPTACLE w/GUIDE PIN POWER / SIGNAL	code 213 SHEET 3 OF 3
K					.XXX±.005/.XX±.13 .XXX±.0020/.XX±.051				
				angles 0°±2°	INCH / MM scale 1:1				
				dr D.BOGLE 05-18-99					
				engr J. BROWN 05-18-99					
				chr J. BROWN 05-18-99					
				appd J. BROWN 05-18-99					
sheet index	revision sheet								

form no. 7530-001-103

cage code 22526