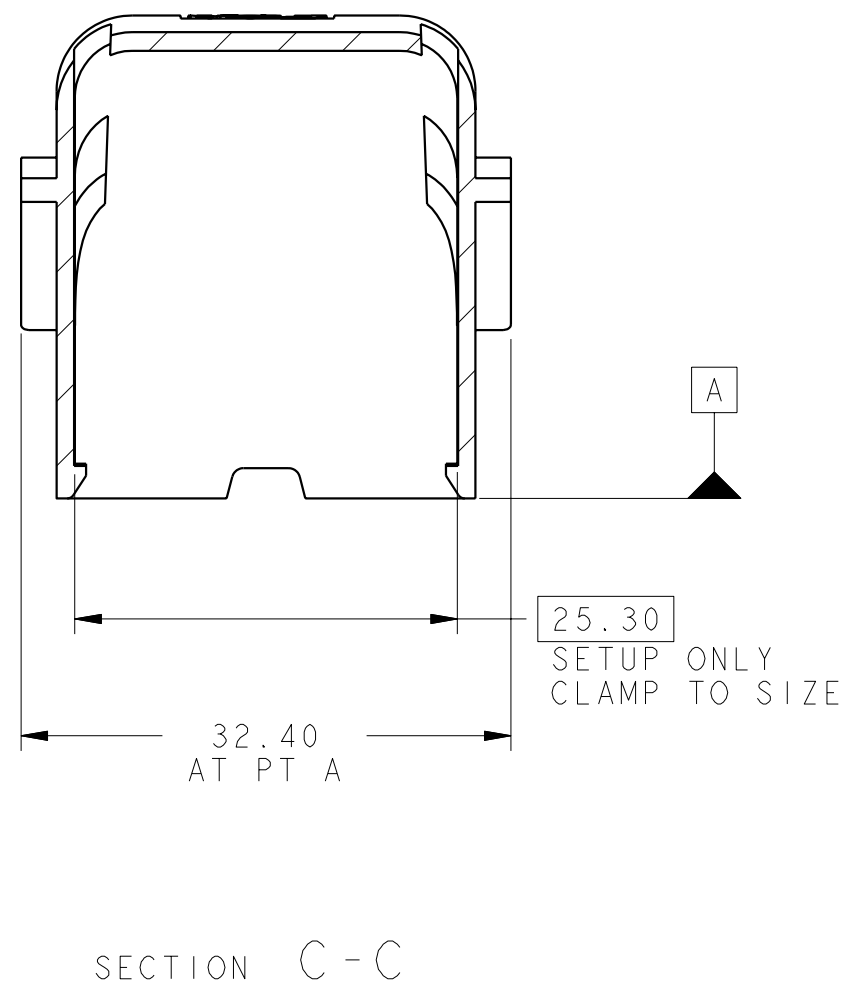
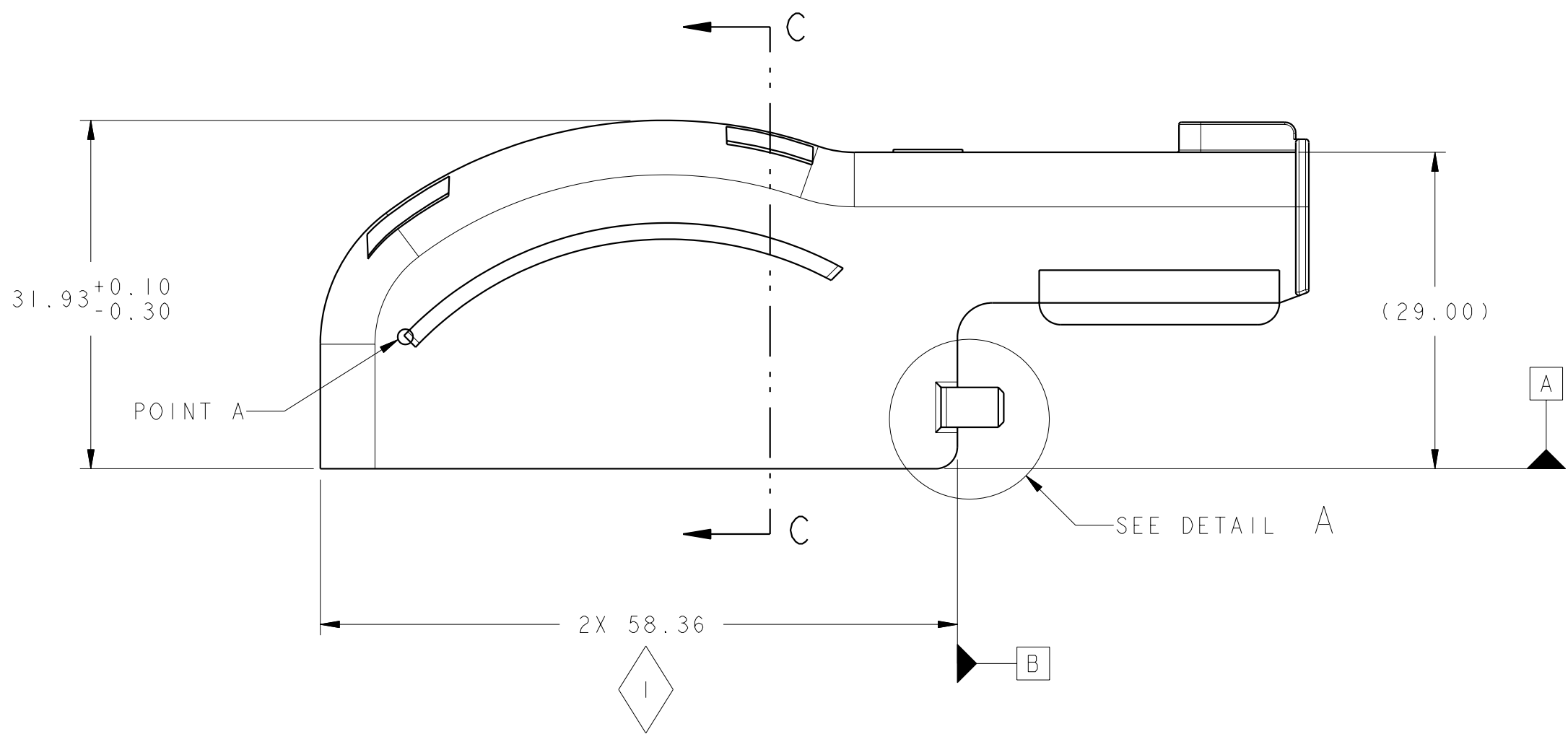
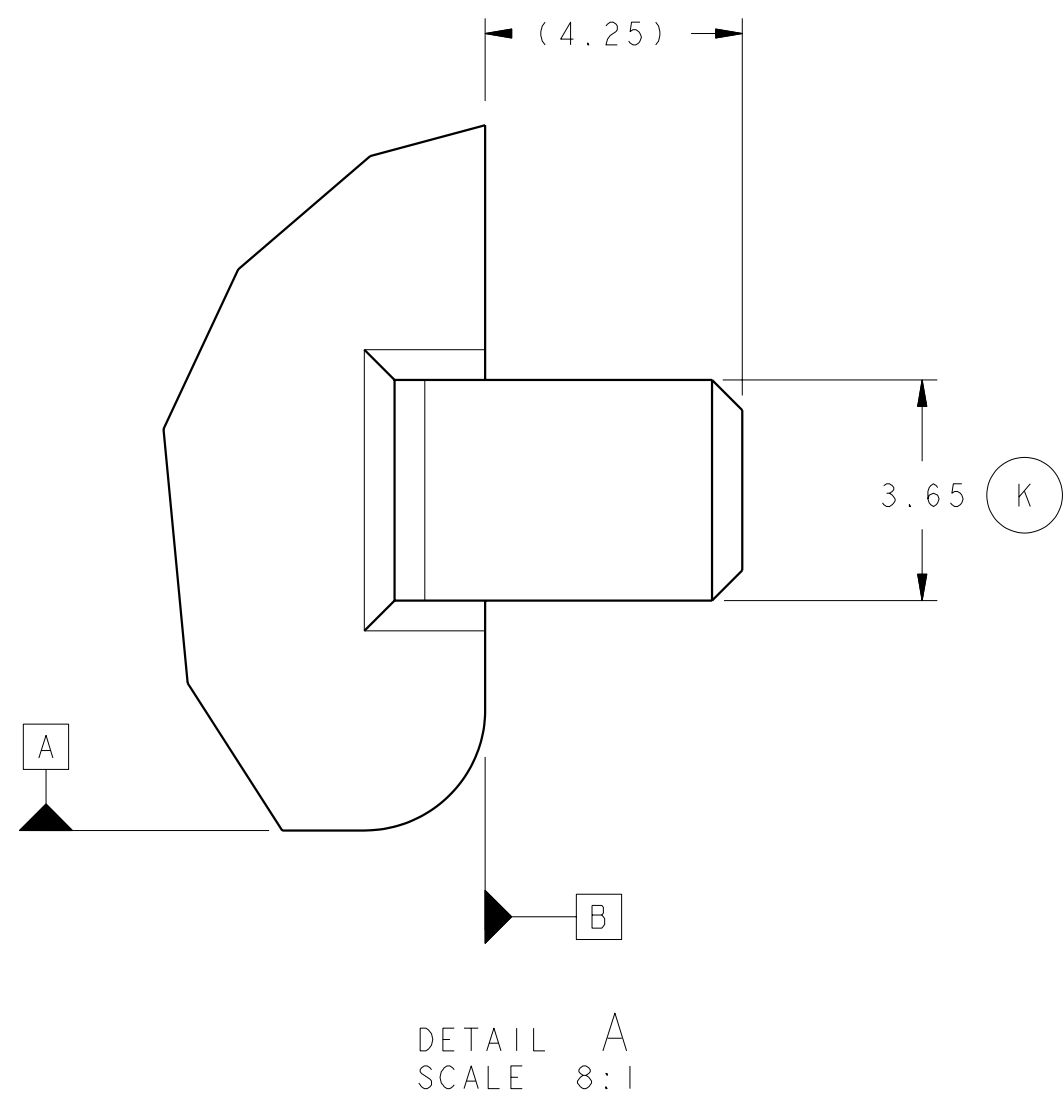
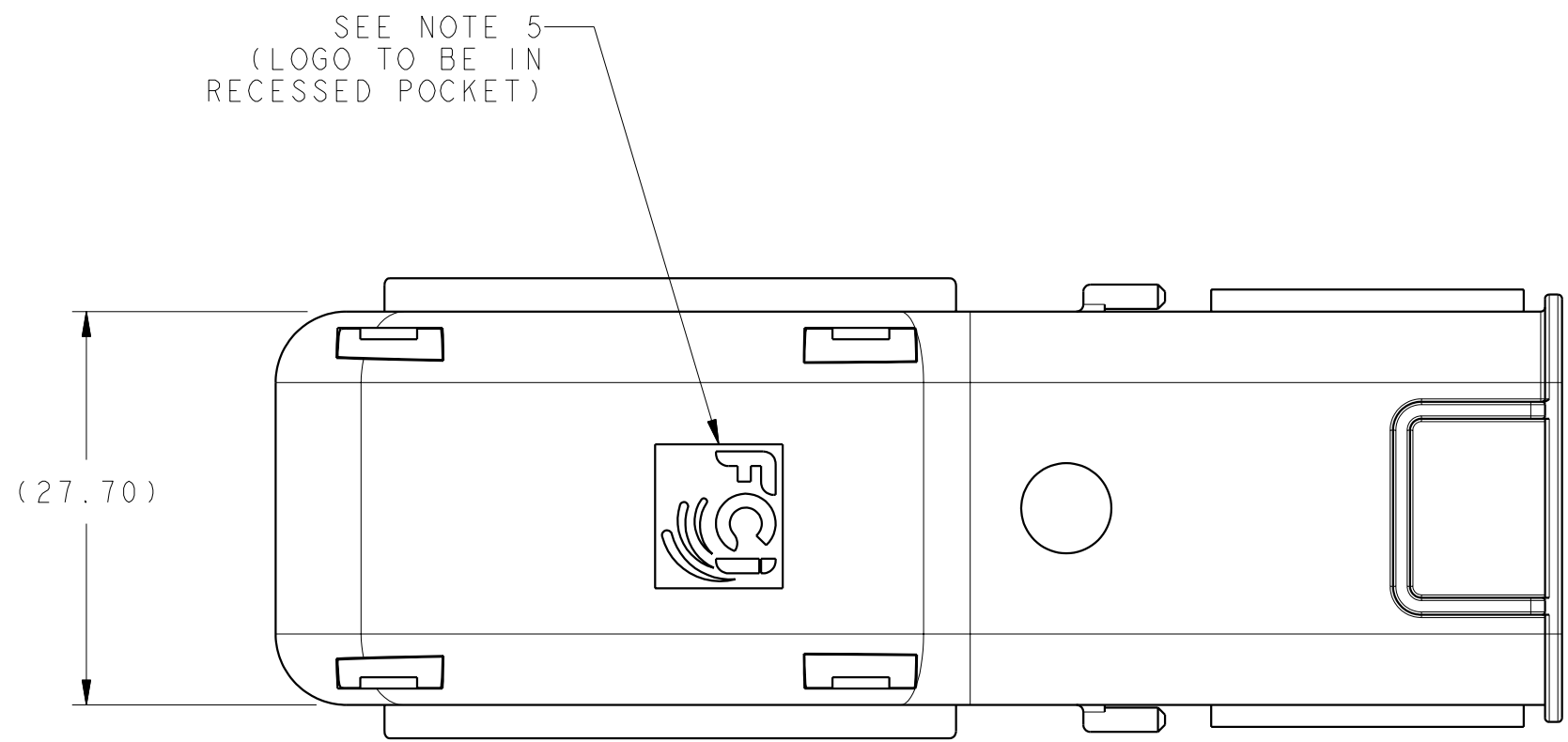
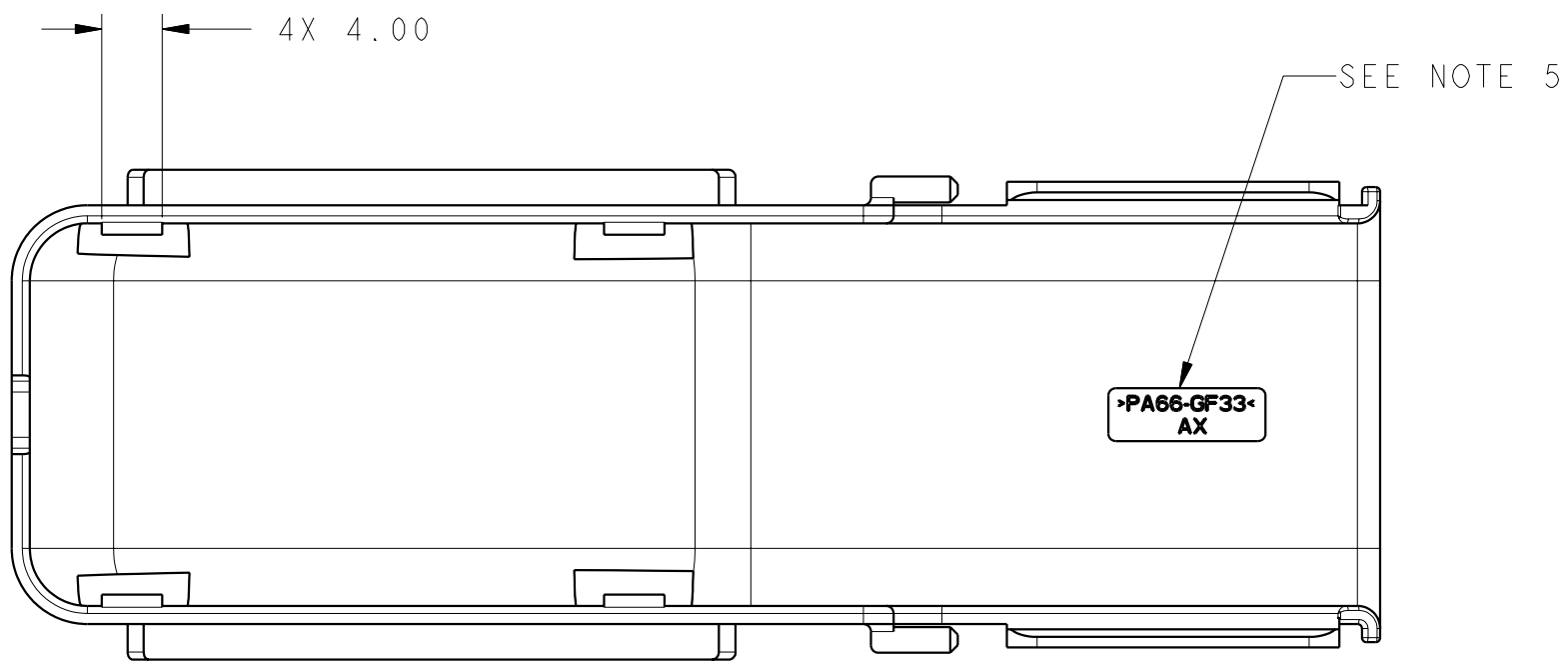


FIG. 014.112.123.PDS

YAZAKI	7234-8997-30
DRAEXLMAIER	94961673
CUSTOMER	PART NO.



- NOTES:
- UNLESS OTHERWISE SPECIFIED:
1. TOLERANCE ON:  
1 PLACE DIMENSIONS  $\pm 0.30$   
2 PLACE DIMENSIONS  $\pm 0.10$   
ANGULAR DIMENSIONS  $\pm 2^\circ$
  2. (R0.25 MAX) PERMISSIBLE ON CORNERS & FILLETS SHOWN AS SHARP
  3. PART TO BE MOLDED FREE FROM FLASH, VOIDS, STRESSES, IMPERFECTIONS AND TOOL MARKS THAT AFFECT FUNCTION OR HANDLING OF THE PART
  4. ALL EJECTOR MARKS TO BE FLUSH TO 0.25MM BELOW THE SURFACE OF THE PART
  5. FCI LOGO, MOLD ID, CAVITY ID AND RECYCLE CODE TO BE SHOWN LEGIBLY WITH RAISED OR DEPRESSED CHARACTERS TO BE (1.0 HIGH X 0.30 WIDE MINIMUM)
  6. MATERIAL: DUPONT ZYTEL 70G-33 HSIL  
COLOR: BLACK
  7. PART VOLUME: (8.44 cc)
  8. (I) INDICATES QUALITY ASSURANCE REQUIREMENTS SPC DATA, ALSO REQUIRED MOLD PROCESS PARAMETERS: CAVITY PRESSURE ONLY
  9. (K) INDICATES IN-PROCESS INSPECTION FOR MANUFACTURING DIMENSION(S) OR SPECIFICATION(S)
  10. ALL REFERENCED DIMENSIONS TO BE VERIFIED VISUALLY FOR PRESENCE
  11. MUST CONFORM TO GMW3172 AND GMW3191
  12. FOR WHERE USED REFER TO FCI 73 WAY ASSEMBLY DRAWING PC10337826



11264	C11	CORRECTED RECYCLE CODE GRAPHIC SHOWN	
10386	A16	ADDED CUSTOMER PART NUMBER CHART	
9935	-	PRODUCTION RELEASE	
ECN NO.	ZONE	CHANGE DESCRIPTION	
PRODUCT SPEC.	PACKAGING SPEC.	APPLICATION SPEC.	THIS DRAWING AND ALL OTHER INFORMATION CONTAINED THEREIN IS PROPRIETARY AND THE PROPERTY OF FCI. This drawing may not be copied, reproduced or disclosed to any third party without the expressed written permission of FCI. FCI April ©1999
TOLERANCES	$\pm 0.1$ $\pm 2^\circ$	MATERIAL :	SURFACE FINISH
COUNTERPART N°:		COLOR :	SEE NOTES
DO NOT MEASURE DRAWING		TOOL NO.:	M407
		ECO Loc. Code	AN
DATE	NAME	TITLE	
20071010	A BUTCHER	73/80 WAY DRESS COVER	
20100514	Frank HOLUB	PROJECT	
20100514	Buchta DIAN	GM S0	
20100514	JIM CAMPBELL	ESR NO. AM-040337	CAT. NO. :
FILE NAME	PCC0543714	DOCUMENT UNDER PDS CONTROL NO MODIFICATION ALLOWED OUTSIDE	
DRAWING NUMBER		REV.	APPROVAL LEVEL
PCC0543714		C	-
STATE		REV.	SHEET
PPI0001011		A	1 of 1
SCALE		2:1	