

MICRO SWITCH

FREEPORT ILLINOIS, U S A
A DIVISION OF HONEYWELL
FED. MFG. CODE 91929

SWITCH-BASIC

CATALOG LISTING

BA-2RV303

ABS3543

BA-2RV303

PAGE 1 OF 1

M

DRAWING
NUMBER

ISSUE

5

RELEASE NO. PR-14048 REPLACES X82438-BA

REVISIONS

A	CO 77590 SAD 10 JUN 94
B	C093346 DLT 26 AUG 98
C	CO- 94212-C DLT 20 SEP 99
D	0018387 TSG 18 JAN 06

CHECK

18 JAN 06

RJ

85

11 JULY 85

KAG

85

11 JULY 85

85

11 JULY 85

85

11 JULY 85

85

11 JULY 85

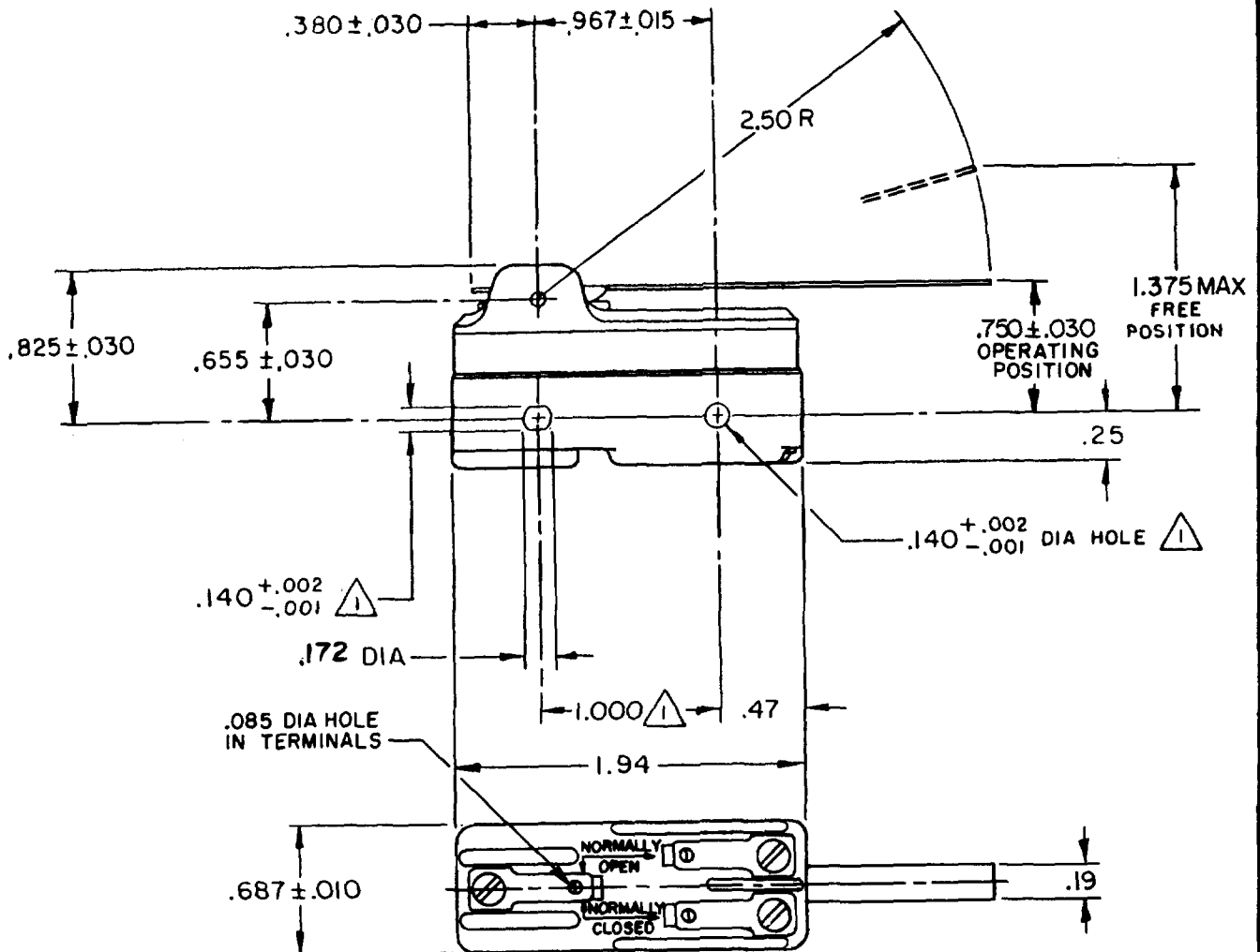
85

11 JULY 85

FORMTEK

FO-52848-A

DRAWN

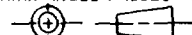


NOTE

△ MOUNTING HOLES WILL ACCEPT PINS OR SCREWS
OF .139 MAX DIA ON 1.000 ± .002 CENTERS

THIS DRAWING COVERS A PROPRIETARY ITEM AND IS THE PROPERTY OF MICRO SWITCH, A DIVISION OF HONEYWELL. THIS DRAWING IS NOT TO BE COPIED OR USED WITHOUT THE APPROVAL OF MICRO SWITCH.

THIRD ANGLE PROJECTION



CHARACTERISTICS

OPERATING FORCE ----- 2 1/2 OZ MAX

RELEASE FORCE ----- 1/2 OZ MIN

DIFFERENTIAL TRAVEL ----- .079 -.109

OVERTRAVEL ----- .078 MIN

ELECTRICAL DATA

CONTACT ARRANGEMENT
S P D T

L23 20A 125, 250, OR 480 VAC
10A 125 VAC "L"
1 HP 125 VAC, 2 HP 250 VAC
1/2 A 125 VDC, 1/4 A 250 VDC

L288
L308
L315

CE 20(3)A 250V T85 5E4

SCALE FULL

DO NOT SCALE PRINT

TOLERANCES

APPLY TO DESIGN UNITS. CONVERSIONS ARE ONLY FOR
REFERENCE. UNLESS NOTED TOLERANCES ARE 2

DIM.	TOL.	DIM.	TOL.
mm	mm/in	in	mm/in
NO PLACES	X	1/04	
ONE PLACE	X, X	0.4/018	X X
TWO PLACES	X, X	0.15/008	X X X
THREE PLACES	X, X X	0.38/011	X X X
ANGLES		0.13/005	

DESIGN UNITS ☐ SI METRIC ☐

US CUSTOMARY ☐

WEIGHT

Mouser Electronics

Authorized Distributor

Click to View Pricing, Inventory, Delivery & Lifecycle Information:

[Honeywell:](#)

[BA-2RV303](#)