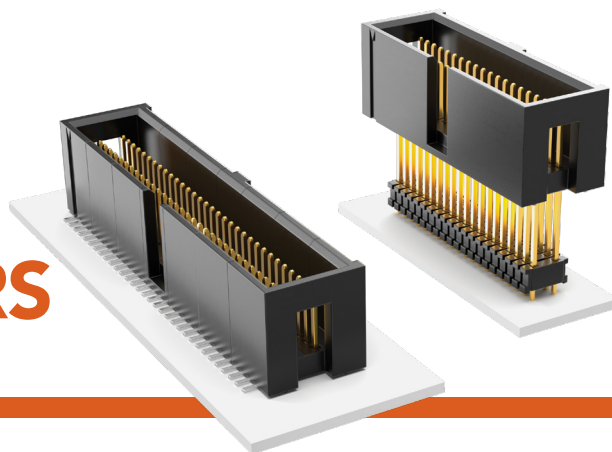


SHROUDED HEADERS & STACKERS

(1.27 mm) .050" PITCH • TML/ZML SERIES



TML/ZML

Mates:

SMS, RSM

SPECIFICATIONS

TML

Insulator Material:
Black Liquid Crystal Polymer

Terminal Material:
Phosphor Bronze

Plating:

Au or Sn over
50 μ " (1.27 μ m) Ni

Operating Temp Range:
-55 $^{\circ}$ C to +105 $^{\circ}$ C with Tin;
-55 $^{\circ}$ C to +125 $^{\circ}$ C with Gold

ZML

Insulator Material:
Black Liquid Crystal Polymer

Terminal Material:
Phosphor Bronze

Plating:

Au or Sn over
50 μ " (1.27 μ m) Ni

Operating Temp Range:
-55 $^{\circ}$ C to +105 $^{\circ}$ C with Tin;
-55 $^{\circ}$ C to +125 $^{\circ}$ C with Gold

PROCESSING

TML

Lead-Free Solderable:

Yes

SMT Lead Coplanarity:
(0.10 mm) .004" max (05-20)
(0.15 mm) .006" max (32)*
*(.004" stencil solution
may be available; contact
ipg@samtec.com)

ZML

Same as TML except:

SMT Lead Coplanarity:
(0.15 mm) .006" max*
*(.004" stencil solution
may be available; contact
ipg@samtec.com)

ALSO AVAILABLE
Contact Samtec

Other sizes
Other platings

Notes:

For added mechanical stability, Samtec recommends mechanical board spacers be used in applications with gold or selective gold plated connectors. Contact ipg@samtec.com for more information.

Some sizes, styles and options are non-standard, non-returnable.

TML	-	1	NO. PINS PER ROW	-	LEAD STYLE	-	PLATING OPTION	-	D	-	TAIL OPTION	-	OTHER OPTION
-----	---	---	------------------	---	------------	---	----------------	---	---	---	-------------	---	--------------

05, 08,
10, 20, 32
(Standard sizes)

Specify
LEAD
STYLE
from
chart

-F
= Gold flash
on post,
Matte Tin on tail

-L
= 10 μ " (0.25 μ m)
Gold on post,
Matte Tin on tail

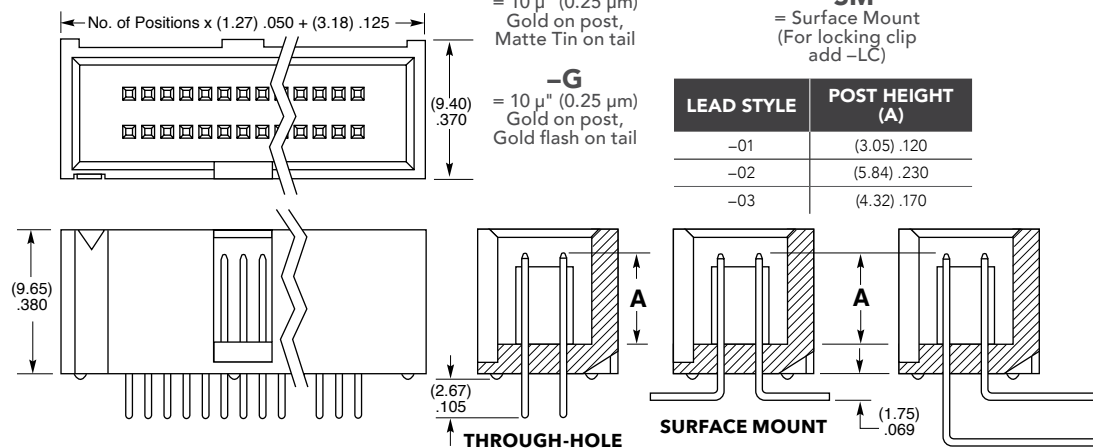
-G
= 10 μ " (0.25 μ m)
Gold on post,
Gold flash on tail

(Leave blank for
Through-hole)

-RA
= Right-angle

-SM
= Surface Mount
(For locking clip
add -LC)

-“XXX”
= Polarized
position
(Specify position
of omitted pin)



RIGHT-ANGLE

ZML	-	1	NO. PINS PER ROW	-	LEAD STYLE	-	PLATING OPTION	-	D	-	BODY HEIGHT	-	TAIL OPTION
-----	---	---	------------------	---	------------	---	----------------	---	---	---	-------------	---	-------------

05, 08,
10, 20, 32
(Standard sizes)

Specify
LEAD
STYLE
from
chart

-L
= 10 μ "
(0.25 μ m)
Gold on post,
Matte Tin on tail

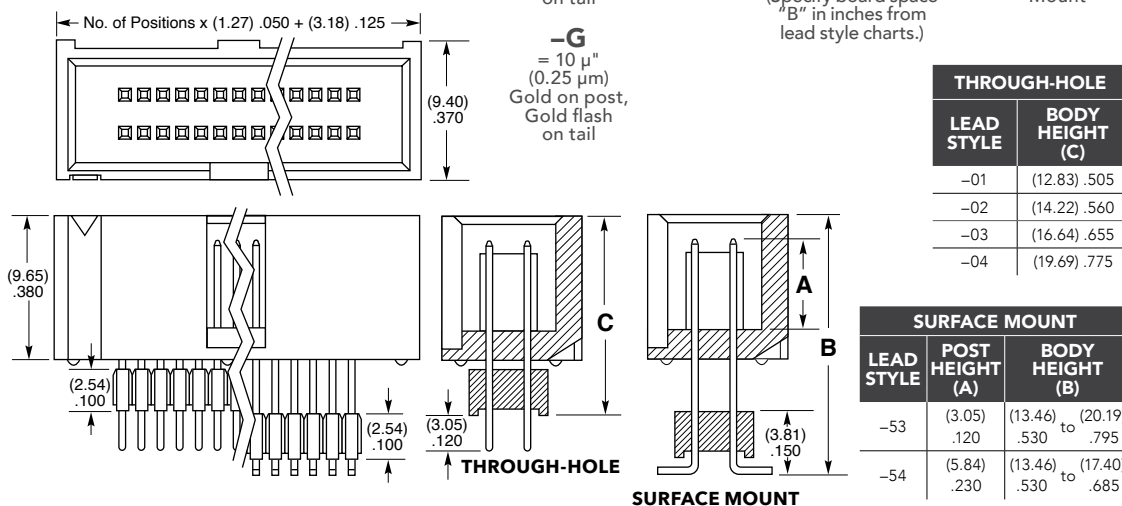
-G
= 10 μ "
(0.25 μ m)
Gold on post,
Gold flash
on tail

(Leave blank for
Through-hole)

-“XXX”
= -SM Body Height
(Specify board space
“B” in inches from
lead style charts.)

(Leave blank for
Through-hole)

-SM
= Surface
Mount



THROUGH-HOLE

LEAD STYLE	BODY HEIGHT (C)
-01	(12.83) .505
-02	(14.22) .560
-03	(16.64) .655
-04	(19.69) .775

SURFACE MOUNT

LEAD STYLE	POST HEIGHT (A)	BODY HEIGHT (B)
-53	(3.05) .120	(13.46) .530 to (20.19) .795
-54	(5.84) .230	(13.46) .530 to (17.40) .685