

10600 series

Professional toggle switches •
threaded bushing Ø 10 mm



DISTINCTIVE FEATURES

Threaded bushing dia. 10 (.393)

CECC approved

Available with black finish



ELECTRICAL SPECIFICATIONS

- Max. current/voltage rating with resistive load : 3 A 24 VDC
- Minimum load : 100 μ A 10 mV
- Initial contact resistance : 10 m Ω max.
- Insulation resistance : 1,000 M Ω min. at 500 VDC
- Dielectric strength :
1,000 Veff. 50 Hz min. between terminals of the same pole
2,000 Veff. 50 Hz min. between terminals and frame
2,000 Veff. 50 Hz min. between terminals of adjacent poles
- Electrical life : 50,000 cycles



GENERAL SPECIFICATIONS

- Torque : 1.50 Nm (1.106 Ft.lb) max. applied to nut
- Operating temperature : -40 °C to +85 °C (-40 °F to +185 °F)
- Max. panel thickness : 4 mm (.157)



MATERIALS

- Case : diallylphthalate (DAP) or high temperature plastic material (UL94-V0)
- Actuator : brass, nickel plated
- Bushing : brass, nickel plated
- Housing : stainless steel
- Contacts :
- silver
- gold plated silver
- Terminal seal : epoxy

The company reserves the right to change specifications without notice.



10600 series

Professional toggle switches •
threaded bushing Ø 10 mm

AGENCY APPROVAL



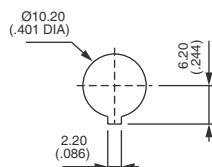
CECC 96201-007

Availability : consult factory for details of approved models.

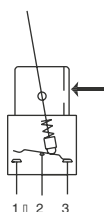
Marking : to order switches marked CECC, add "CECC" to model number.



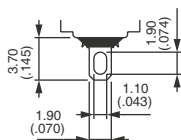
PANEL CUT-OUT



ELECTRICAL FUNCTIONS



TERMINALS



ABOUT THIS SERIES

Complete part numbers are shown on the following page.



Sealing boots are available to protect the switches against dust and water. See "Sealing boots" section of website.



Mounting accessories : standard hardware supplied with all models : 1 knurled nut, 1 hex nut, 1 locking ring and 1 lockwasher. It is presented in the "Hardware" section of website.

10600 series

Professional toggle switches • threaded bushing Ø 10 mm

SOLDER LUG TERMINALS - 2 POSITIONS SINGLE POLE



Silver contacts	Gold plated silver contacts	II	I
106362103	106361175	ON	ON
106322103	106321175	ON	MOM

SOLDER LUG TERMINALS - 2 POSITIONS DOUBLE POLE



Silver contacts	Gold plated silver contacts	II	I
106462103	106461175	ON	ON
106422103	106421175	ON	MOM

SOLDER LUG TERMINALS - 3 POSITIONS SINGLE POLE



Silver contacts	Gold plated silver contacts	III	II	I
106392103	106391175	ON	OFF	ON
106372103	106371175	MOM	OFF	MOM
106382103	106381175	ON	OFF	MOM

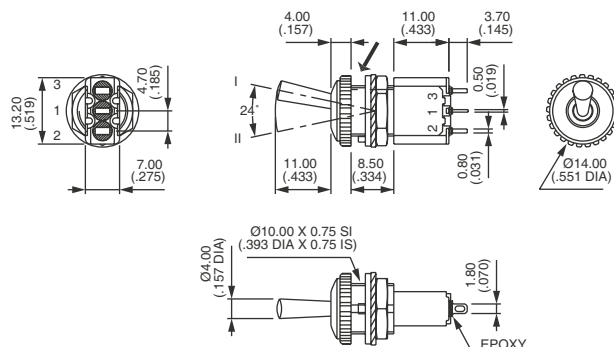
SOLDER LUG TERMINALS - 3 POSITIONS DOUBLE POLE



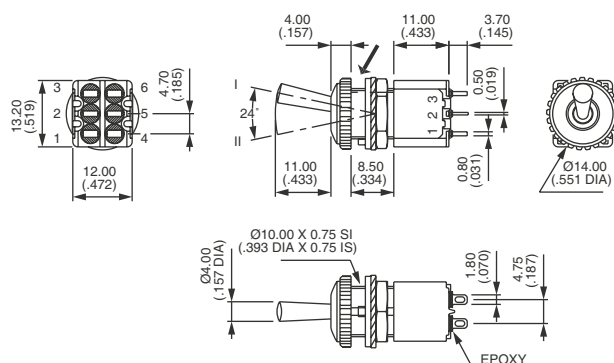
Silver contacts	Gold plated silver contacts	III	II	I
106492103	106491175	ON	OFF	ON
106472103	106471175	MOM	OFF	MOM
106482103	106481175	ON	OFF	MOM
106440886*	106440944*	ON	ON (2-3) (5-4)	ON

* Function 4 : SP in DP case. Jumper between terminals 2 and 4 to be wired by the user.

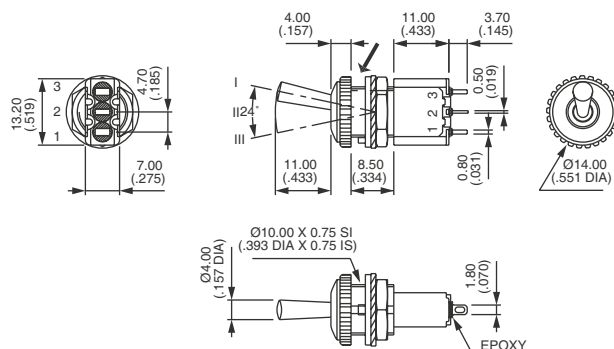
→ KEYWAY



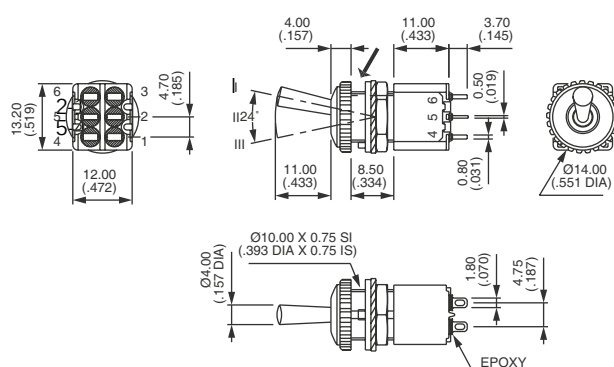
→ KEYWAY



→ KEYWAY



→ KEYWAY



10600 series

Professional toggle switches •
threaded bushing Ø 10 mm

AGENCY APPROVALS

BASIC P/N



CECC CECC 96401-001

Blank No agency approval required.

Availability : consult factory for details of approved models.

Marking : to order switches marked CECC, please complete above box with CECC.