

MICRO SWITCH

FREEPORT ILLINOIS, U.S.A
A DIVISION OF HONEYWELL
FED. MFG. CODE 91929

SWITCH - BASIC

CATALOG LISTING

IXEI-6

IXEI-6

PAGE 1 OF 1

M

DRAWING
NUMBER

83

ISSUE
4

REPLACES

RELEASE NO. SR-11500

CHECK

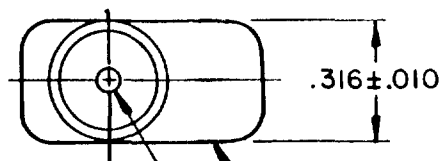
CHECK

30 JULY 82

82 JUL 26

FORMTEK
FO-52848-A

ELASTOMER PLUNGER SEAL



CORROSION RESISTANT TREATED METAL ENCLOSURE

CORROSION RESISTANT STEEL PLUNGER

.050 MAX
PRETRAVEL

.060 DIA

.188 ± .020

.425 ± .020
OPERATING
POSITION

.33

.27
ELONGATED
MTG HOLE

.091 MAX DIA
MTG HOLE

COMMON

NORMALLY CLOSED

NORMALLY OPEN

.188

.214 ± .010

.616 ± .010

A 2

.070 SPHERICAL
RADIUS

72.000 MIN

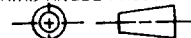
(3) NO. 20 WIRE LEAD PER
MIL-W-22759/11 EMBEDDED
IN EPOXY CASTING RESIN

NOTES

- 1 MOUNTING HOLES WILL ACCEPT .087 MAX DIA PINS OR SCREWS ON .188 ± .002 CENTERS
- 2 ACTUATION IN LINE WITH ARROW "A" IS RECOMMENDED
- 3 WEIGHT OF SWITCH ONLY IS .16 OZ MAX
WEIGHT OF SWITCH WITH WIRE LEADS IS 2.9 OZ MAX

THIS DRAWING COVERS A PROPRIETARY ITEM AND IS THE PROPERTY OF MICRO SWITCH, A DIVISION OF HONEYWELL. THIS DRAWING IS NOT TO BE COPIED OR USED WITHOUT THE APPROVAL OF MICRO SWITCH.

THIRD ANGLE PROJECTION



CHARACTERISTICS

OPERATING FORCE ----- 5-17 OZ

RELEASE FORCE ----- 4 OZ MIN

RELEASE TRAVEL ----- .004 MIN

DIFFERENTIAL TRAVEL ----- .005 MAX

OVERTRAVEL ----- .004 MIN

ELECTRICAL DATA

CONTACT ARRANGEMENT
S P D T

28 VOLTS DC RATING

INDUCTIVE ----- SEA LEVEL --- 4 AMP
50,000 FT --- 2.5 AMP

RESISTIVE ----- SEA LEVEL --- 7 AMP
50,000 FT --- 7 AMP

MAXIMUM INRUSH ----- 24 AMP

SCALE 2:1

DO NOT SCALE PRINT

TOLERANCES

APPLY TO DESIGN UNITS. CONVERSIONS ARE ONLY FOR
REFERENCE. UNLESS NOTED, TOLERANCES ARE ±

DIM. mm	TOL. mm/in	DIM. in	TOL. mm/in
NO PLACES	X	1/.04	
ONE PLACE	X,X	0.01/.016	X,X
TWO PLACES	X,X,X	0.001/.0016	X,X,X
THREE PLACES	X,X,X,X	0.0001/.00016	X,X,X,X
ANGLES			

DESIGN UNITS ☐ SI METRIC

☒ US CUSTOMARY

WEIGHT 3

Mouser Electronics

Authorized Distributor

Click to View Pricing, Inventory, Delivery & Lifecycle Information:

[Honeywell:](#)

[1XE1-6](#)