

**MICRO SWITCH**

A DIVISION OF MINNEAPOLIS HONEYWELL REGULATOR COMPANY  
FREDERICK, MINN.

FED. MFR. CODE 91929

**SWITCH—ENCLOSED**

CATALOG LISTING  
**51ML2-E1**

THIS DRAWING COVERS A PROPRIETARY ITEM AND IS THE PROPERTY OF MICRO SWITCH, A DIVISION OF HONEYWELL. THIS DRAWING IS NOT TO BE COPIED OR USED WITHOUT THE APPROVAL OF MICRO SWITCH.

**m**

51ML2-E1

**M**

DRAWING  
NUMBER

ISSUE

II

REPLACES

RELEASE NO. SR 4896

CHECK

14 DEC. 53

CHECK

14 DEC. 53

CHECK

14 DEC. 53

CHECK

14 DEC. 53

CHECK

14 DEC. 53

CHECK

14 DEC. 53

CHECK

14 DEC. 53

CHECK

14 DEC. 53

CHECK

14 DEC. 53

CHECK

14 DEC. 53

CHECK

14 DEC. 53

CHECK

14 DEC. 53

CHECK

14 DEC. 53

CHECK

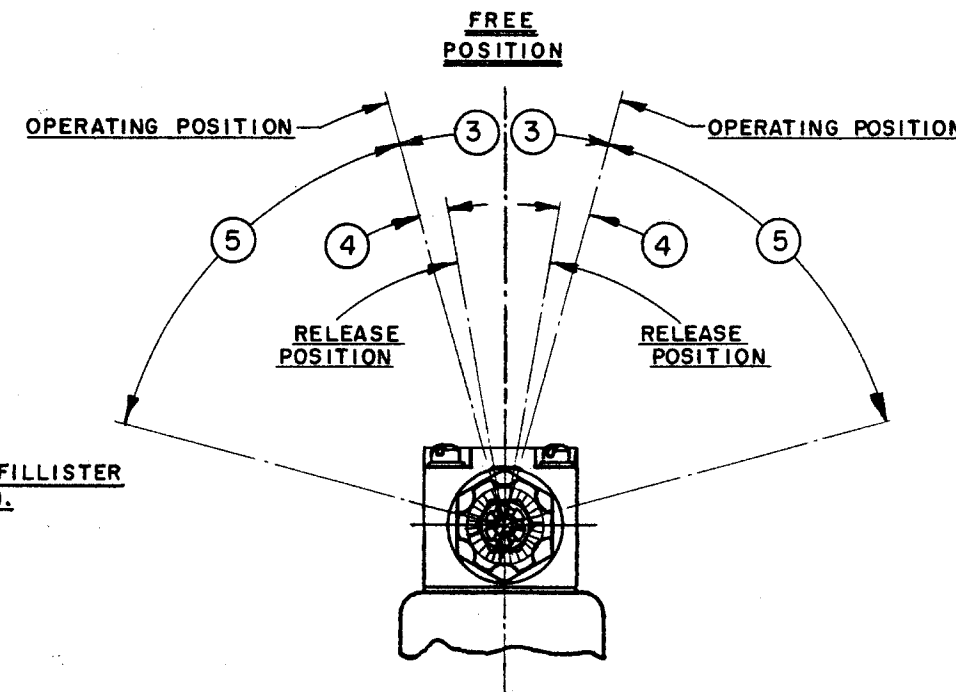
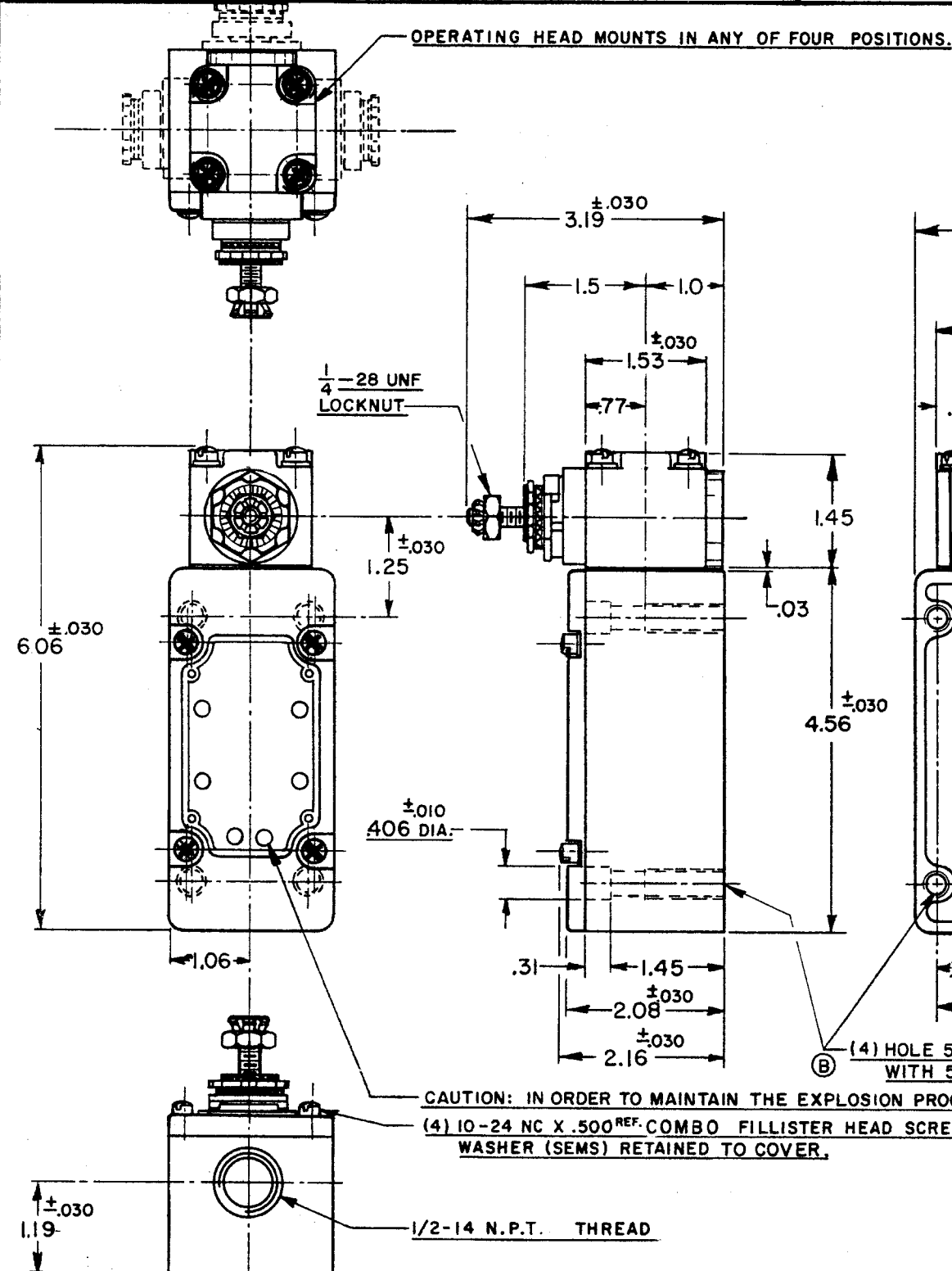
14 DEC. 53

CHECK

14 DEC. 53

CHECK

14 DEC. 53



**NOTES**

- 1 - IT IS ESSENTIAL THAT THE CONDUIT OPENING BE PROPERLY SEALED IN ORDER TO MAINTAIN THE EXPLOSION PROOF PROPERTIES
- 2 - SWITCH IS ASSEMBLED FOR ACTUATION IN EITHER DIRECTION
- 3 - LISTED BY UNDERWRITERS LABORATORY, INC. FOR USE IN CLASS I, GROUPS C AND D VAPOR-AIR ATMOSPHERE, AND CLASS 2 GROUPS E, F AND G DUST-AIR ATMOSPHERES
- 4 - TO CONVERT SWITCH FOR ACTUATION IN EITHER CLOCKWISE OR COUNTER-CLOCKWISE DIRECTION ONLY, REMOVE THE HEAD AND SLIDE THE CAM TOWARD THE REAR OF THE HEAD SUFFICIENTLY TO DISENGAGE FROM THE FLATS ON THE SHAFT. ROTATE THE CAM 90° IN THE OPPOSITE DIRECTION OF THE ACTUATION DESIRED AND RE-ENGAGE THE CAM WITH THE FLATS ON THE SHAFT
- 5 - SHAFT MAY BE ADJUSTED TO ACTUATE THE SWITCH IN THE CLOCKWISE DIRECTION ONLY, THE COUNTER-CLOCKWISE DIRECTION OR IN BOTH DIRECTIONS

**CHARACTERISTICS**

OPERATING TORQUE—3 9/16 LB.-IN. MAX.  
FULL OVERTRAVEL TORQUE—5 3/8 LB.-IN. MAX.  
RELEASE TORQUE—7/16 LB.-IN. MIN.  
PRETRAVEL—3 12° MAX.  
DIFFERENTIAL TRAVEL—4 4° MAX.  
OVERTRAVEL—5 60° MIN.

SWITCH—BASIC REPLACEMENT—IMK1

**ELECTRICAL DATA**

CONTACT ARRANGEMENT  
S. P. D. T.

20A-120, 240 OR 480 VAC; 3/4 H.P.-120 VAC  
1 1/2 HP-240 VAC; 1/2A-115 VDC; 1/4A-230 VDC  
PILOT DUTY: 720VA—HEAVY DUTY  
600 VAC MAX

SCALE 1/2 TO 1

DO NOT SCALE PRINT

UNLESS OTHERWISE SPECIFIED  
DIMENSIONS ARE IN INCHES

**TOLERANCES ARE:**

ONE PLACE (.0) ±.030  
TWO PLACE (.00) ±.015  
THREE PLACE (.000) ±.003  
ANGLES ±

WEIGHT



# Mouser Electronics

Authorized Distributor

Click to View Pricing, Inventory, Delivery & Lifecycle Information:

[Honeywell:](#)

[51ML7-E1](#)