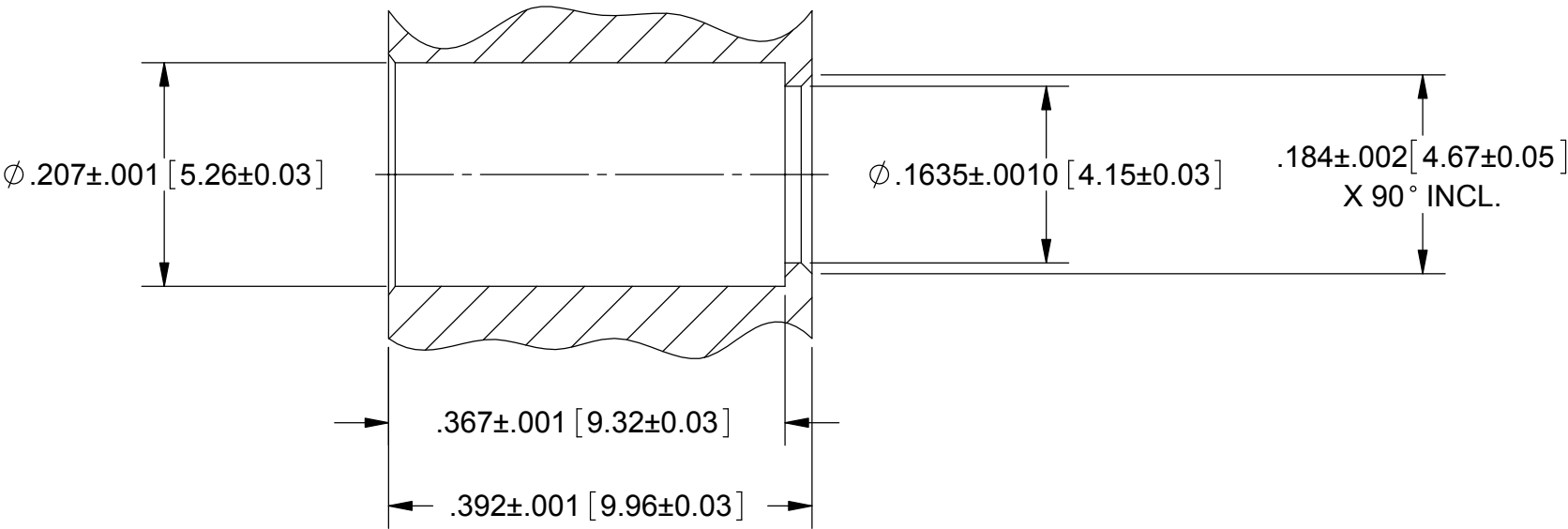
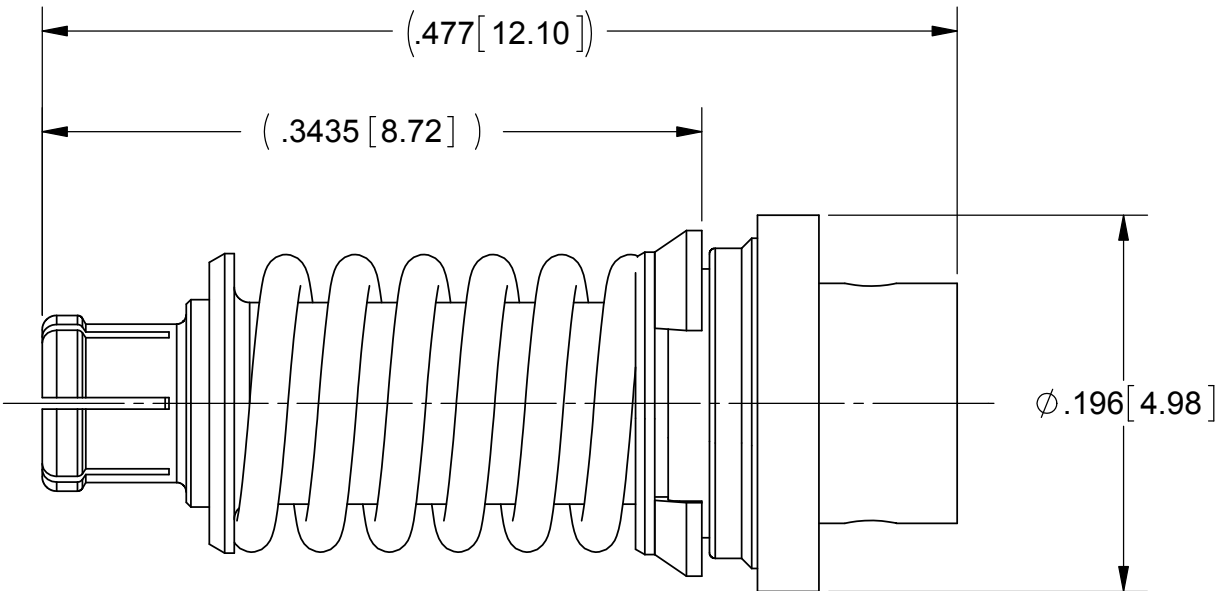
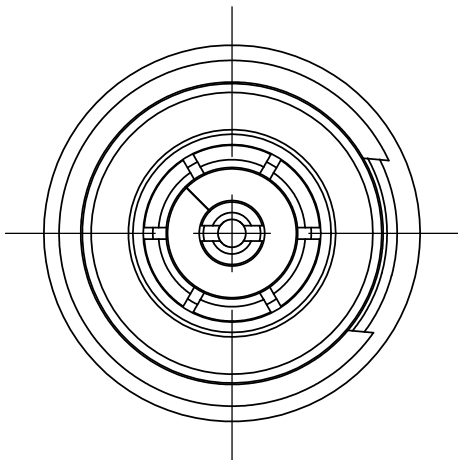
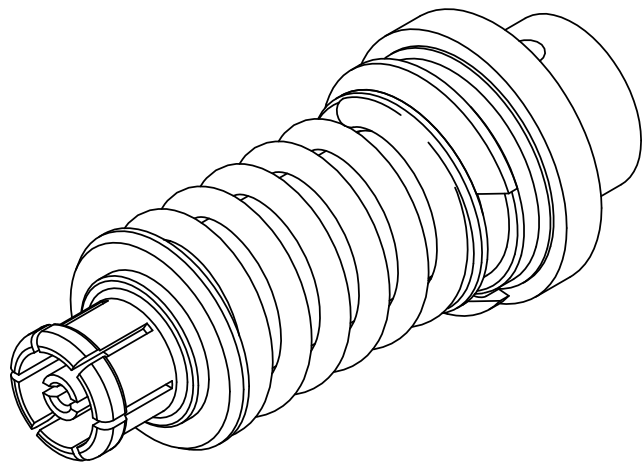


PRODUCT DATA DRAWING

REVISION HISTORY			
REV	DESCRIPTION	DATE	APPROVED
C	DCN 42164	03/16	DAL



MATERIAL:

BODY, CONTACT & RETAINING RING:	BERYLLIUM COPPER
INSULATOR:	PTFE
FERRULE:	BRASS
COMPRESSION SPRING, SLEEVE & WASHER:	STAINLESS STEEL


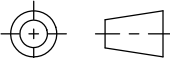
FINISH:

BODY, CONTACT & FERRULE:	GOLD OVER NICKEL
RETAINING RING:	NICKEL
COMPRESSION SPRING, SLEEVE & WASHER:	PASSIVATED

PERFORMANCE:

IMPEDANCE:	50 OHMS
FREQ. RANGE:	DC TO 40.0 GHz.
VSWR:	1.30:1 DC TO 40.0 GHz.

RECOMMENDED MOUNTING HOLE

MATERIAL:	SEE NOTES	DIMENSIONS ARE IN INCHES TOLERANCES:  FRACTIONAL: ±1/64    ANGULAR: X° ±1°0'    X°X' ±15'  DECIMAL: .X    ±.030 .XX    ±.010 .XXX ±.005  INTERPRET DIMENSIONS AND TOLERANCES PER ASME Y14.5M - 1994	UNLESS OTHERWISE SPECIFIED  1) ALL DIMENSIONS ARE IN INCHES (MILLIMETERS) 2) ALL DIMENSIONS ARE AFTER PLATING. 3) BREAK CORNERS & EDGES .005 R. MAX. 4) CHAM. 1ST & LAST THREADS. 5) SURFACE ROUGHNESS 63-MIL-STD-10. 6) DIA.'S ON COMMON CENTERS TO BE CONCENTRIC WITHIN .005 T.I.R. 7) REMOVE ALL BURRS	 2400 Centrepark West Drive, Suite 100 West Palm Beach, FL 33409				
FINISH:	SEE NOTES			TITLE:  SMPM FEMALE FLOAT MOUNT FOR Ø.086 CABLE				
SURFACE AREA:	N/A							
PROPRIETARY  THE INFORMATION CONTAINED IN THIS DRAWING IS THE SOLE PROPERTY OF SV MICROWAVE, INC. ANY REPRODUCTION IN PART OR AS A WHOLE WITHOUT THE WRITTEN PERMISSION OF SV MICROWAVE, INC IS PROHIBITED.		THIRD ANGLE PROJECTION		DRAWN:	JMC 12/20/10	SIZE	CAGE CODE	DWG. NO.
				CHECKED:	STW 12/20/10	B	95077	3221-40022
				APPROVED:	STW 12/20/10			