



Introducing Cold Applied Splices

KEY FEATURES

One-step termination and environmental protection

No heating required for installation — safe for use on fueled aircraft

Reliable in a wide variety of environmental conditions

Achieve environmental performance while maintaining:

- Small profile
- Electrical performance

Easy installation and application flexibility

Prevents water ingress under permanent pressure/weight

DESCRIPTION

The cold applied splice product line is designed at a single component in-line splice to provide high environmental protection to seal the termination from moisture and provide electrical isolation. If moisture is present, it can lead to insulation failure and breakdown of the electrical connection.

In this product, sealing is achieved by replacing traditional methods, such as grommets, greases and tapes with a novel Tyco Electronics gel technology. The electrical isolation is provided by a polymer outer layer.

APPLICATIONS

Ideal for aerospace and defense application where performance and reliability is essential

Designed to provide an immersion resistant in-line splice on 1:1 wires

- Wide range from 26 AWG to 12 AWG
- Nickel-plated, silver-plated, and tin-plated conductors
- Insulation rated for at least 135° C

Protects and seals on all conventional MIL spec and commercial wire insulation systems

STANDARDS & SPECS

Meets or exceeds the following:

- SAE-AMS-DTL-23053/8 (Insulation sleeve)
- SAE-AS81824/12

Under qualification for SAE AS81824 and AS81824/12

ORDERING INFORMATION

Minimum order quantity: 500 pieces for all sizes

ENVIRONMENTAL

Temperature range:	-65° C to 150° C
Dielectric strength:	2,500 V Maximum
Insulation resistance:	5,000 Mega-ohms minimum
Altitude immersion:	75,000 ft.
Fluid resistance:	MIL-L-7808, MIL-L-3699, MIL-H-5605 (Hydraulic), MIL-A-8243, MIL-C-59769, and MIL-T-5624 (JP-5)

ELECTRICAL

Current rating as defined by the size of crimp, gauge of wire and specification

MECHANICAL

Cold splice tensile strength exceeds strength of spliced wire

Cold Applied Splices

PHYSICAL OR OTHER PROPERTIES

Cross-linked gel technology:

- Proven gel sealing system
- Versatile gel closure
- Non-flowing gel

MATERIALS

Insulation sleeve:	Transparent polyvinylidene fluoride
Metal crimp splice:	Tin plated copper
End caps:	Thermoplastic, color coded
Gel:	Clear flame-retardant silicone based gel

APPLICATION TOOLING

Cold Applied Crimp Tool: AD-1381

Under qualification per M22520/44-01

AD-1381 or approved M22520/44-01 crimp tool **must be** used for proper installation of these devices

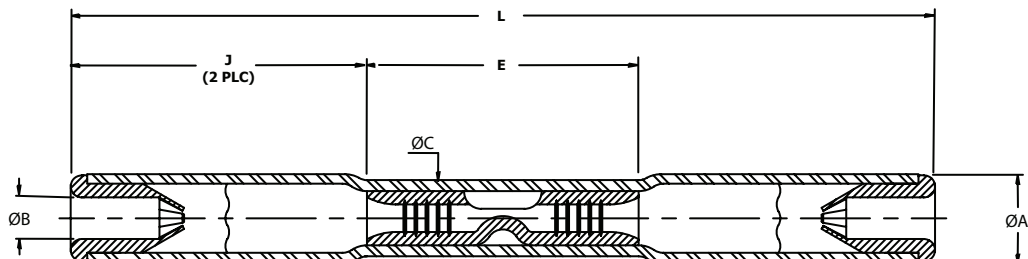


AD-1381 Tool

PART NUMBERS

Part Number	Wire Range	L ± 1.0 (±0.040)	ØA ± 0.5 (±0.020)	ØB ± 0.25 (±0.010)	ØC ± 0.5 (±0.020)	E ± 0.25 (±0.010)	J ± 0.25 (±0.010)	End Cap Color Code (Both Ends)
D-436-36-COLD	26-24-22-20	36.8 (1.450)	4.2 (0.165)	2.0 (0.080)	3.7 (0.145)	12.1 (0.475)	12.7 (0.500)	Red
D-436-37-COLD	18-16	38.7 (1.525)	5.1 (0.200)	2.9 (0.115)	4.5 (0.175)	14.3 (0.565)	12.7 (0.500)	Blue
D-436-38-COLD	14-12	38.7 (1.525)	5.9 (0.235)	3.8 (0.150)	5.2 (0.205)	14.3 (0.565)	12.7 (0.500)	Yellow

Dimensions are in inches.



FOR MORE INFORMATION

Technical Support

Internet:	www.tycoelectronics.com/ADM
E-mail:	product.info@tycoelectronics.com
USA:	+1 (800) 522-6752
Canada:	+1 (905) 470-4425
Mexico:	+52 (0) 55-1106-0814
C. America:	+52 (0) 55-1106-0814
South America:	+55 (0) 11-2103-6000
Germany:	+49 (0) 6251-133-1999
Great Britain:	+44 (0) 8706-080208
France:	+33 (0) 1-3420-8686
Netherlands:	+31 (0) 73-6246-999
China:	+86 (0) 400-820-6015

Tyco Electronics Corporation
Menlo Park, CA

tycoelectronics.com/ADM

©2010 Tyco Electronics Corporation

1-1773459-7 — 2.5M — ADM/FP — 10/10
TE (Logo) and Tyco Electronics are trademarks.



Mouser Electronics

Authorized Distributor

Click to View Pricing, Inventory, Delivery & Lifecycle Information:

[TE Connectivity:](#)

[D-436-36-COLD](#) [D-436-37-COLD](#) [D-436-38-COLD](#) [AD-1381](#)