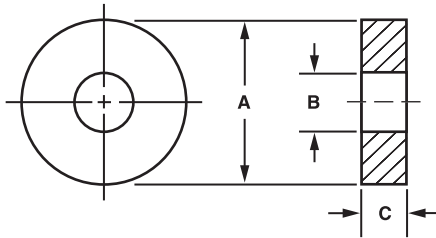


FLAT WASHERS



Tolerances	
A =	+ .020 - .005
B =	± .010
C =	± .003 up to .032 thick ± .006 .033 to .062 thick ± .009 .063 to .093 thick ± .010 for .094 and over

Tighter tolerances for the A, B, & C dimensions can be provided. See order example.

Color	Code	Recommended Thickness "C"	
Natural	1	.010	.125
Black	2	.015	.156
Red	3	.020	.187
Blue	4	.030	.250
Purple	5	.040	.312
Brown	6	.045	.375
Orange	7	.060	.437
Green	8	.062	.500
Yellow	9	.093	

ORDER EXAMPLE:

293 - .015 - S - 1

Basic Part Number: 293
 C Thickness: .015 (See chart or fill in any length)
 Material: S (See chart)
 Finish: 1 (See page 278)

EXAMPLE FOR NYLON AND DELRIN PARTS: 293-015-N-2 ← BLACK
 Choose color from chart, otherwise Natural is provided.
 If a different tolerance and/or dimension change is required, add to part number.
 EXAMPLE: 293-.015-S-1 (A = .370 ± .005)

Available Material (see page 276)

A	Aluminum	Ph	Phenolic (Paper)
B	Brass	Phl	Phenolic (Linen)
C	Copper	L	Polycarbonate(Lexan)
S	Steel	PA	A.B.S.
SS	Stainless Steel	PP	P.V.C.
N	Nylon	T	Teflon
D	Delrin	F	Fibre
GM	Glass Melamine G 5	GE	Glass Epoxy G10
GS	Glass Silicone G 7	UL*	ULTEM 1000

* ULTEM 1000 - UL Rating 94V-0

Screw Size	B ID	A OD	Basic Part No.	C Thickness	Material	Finish	Screw Size	B ID	A OD	Basic Part No.	C Thickness	Material	Finish
5/16	.318	.751	293				3/8	.375	.487	322			
	.321	.764	294					.375	.500	323			
	.324	.520	295					.375	.531	324			
	.325	.383	296					.375	.625	325			
	.325	.500	297					.375	.656	326			
	.325	.562	298					.375	.875	327			
	.325	.625	299					.375	1.000	328			
	.325	.870	300					.375	1.130	329			
	.326	.412	301					.375	1.250	330			
	.327	.750	302					.375	1.632	331			
	.328	.562	303					.377	.562	332			
	.328	1.000	304					.378	.482	333			
	.328	1.375	305					.378	.563	334			
	.330	.370	306					.378	.720	335			
	.331	.521	307					.378	.750	336			
	.333	.500	308					.378	.750	336			
	.335	.390	309					.380	.683	337			
	.335	.625	310					.380	.812	338			
	.335	.750	311					.380	1.125	339			
	.336	.875	312					.381	.782	340			
.340	.687	180				.382	.507	341					
.340	.875	185				.382	.683	342					
.343	.500	313				.382	2.256	343					
.343	.687	314				.384	.564	344					
.343	.750	315				.384	2.750	345					
.360	.625	316				.385	.625	346					
.370	.880	317				.385	1.000	347					
.372	.753	318				.387	.654	348					
.373	.503	319				.390	.625	349					
.374	.866	320				.390	.836	350					
.374	1.005	321				.390	.870	351					
						.391	1.000	352					

WASHERS